

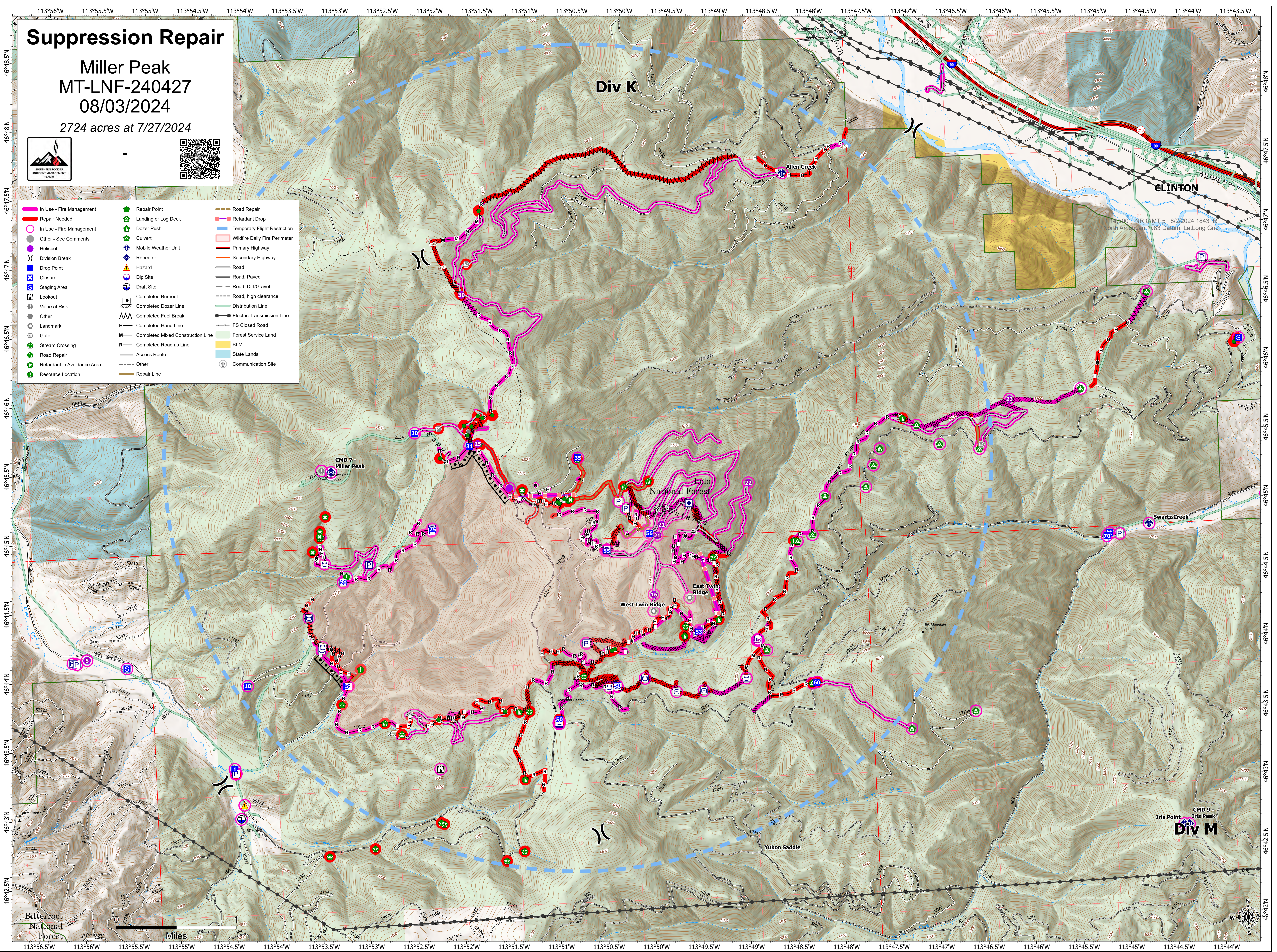
Suppression Repair

Miller Peak
MT-LNF-240427
08/03/2024

2724 acres at 7/27/2024



In Use - Fire Management	Repair Point	Road Repair
Repair Needed	Landing or Log Deck	Retardant Drop
In Use - Fire Management	Dozer Push	Temporary Flight Restriction
Other - See Comments	Culvert	Wildfire Daily Fire Perimeter
Helispot	Mobile Weather Unit	Primary Highway
Division Break	Repeater	Secondary Highway
Drop Point	Hazard	Road
Closure	Dip Site	Road, Paved
Staging Area	Draft Site	Road, Dirt/Gravel
Lookout	Completed Burnout	Road, high clearance
Value at Risk	Completed Dozer Line	Distribution Line
Other	Completed Fuel Break	Electric Transmission Line
Landmark	Completed Hand Line	FS Closed Road
Gate	Completed Mixed Construction Line	Forest Service Land
Stream Crossing	Completed Road as Line	BLM
Road Repair	Access Route	State Lands
Retardant in Avoidance Area	Repair Line	Communication Site
Resource Location		



CMD 9 - Iris Peak
DIV M

Bitterroot National Forest

Miles

