

Suppression Repair

Miller Peak
MT-LNF-240427
08/03/2024

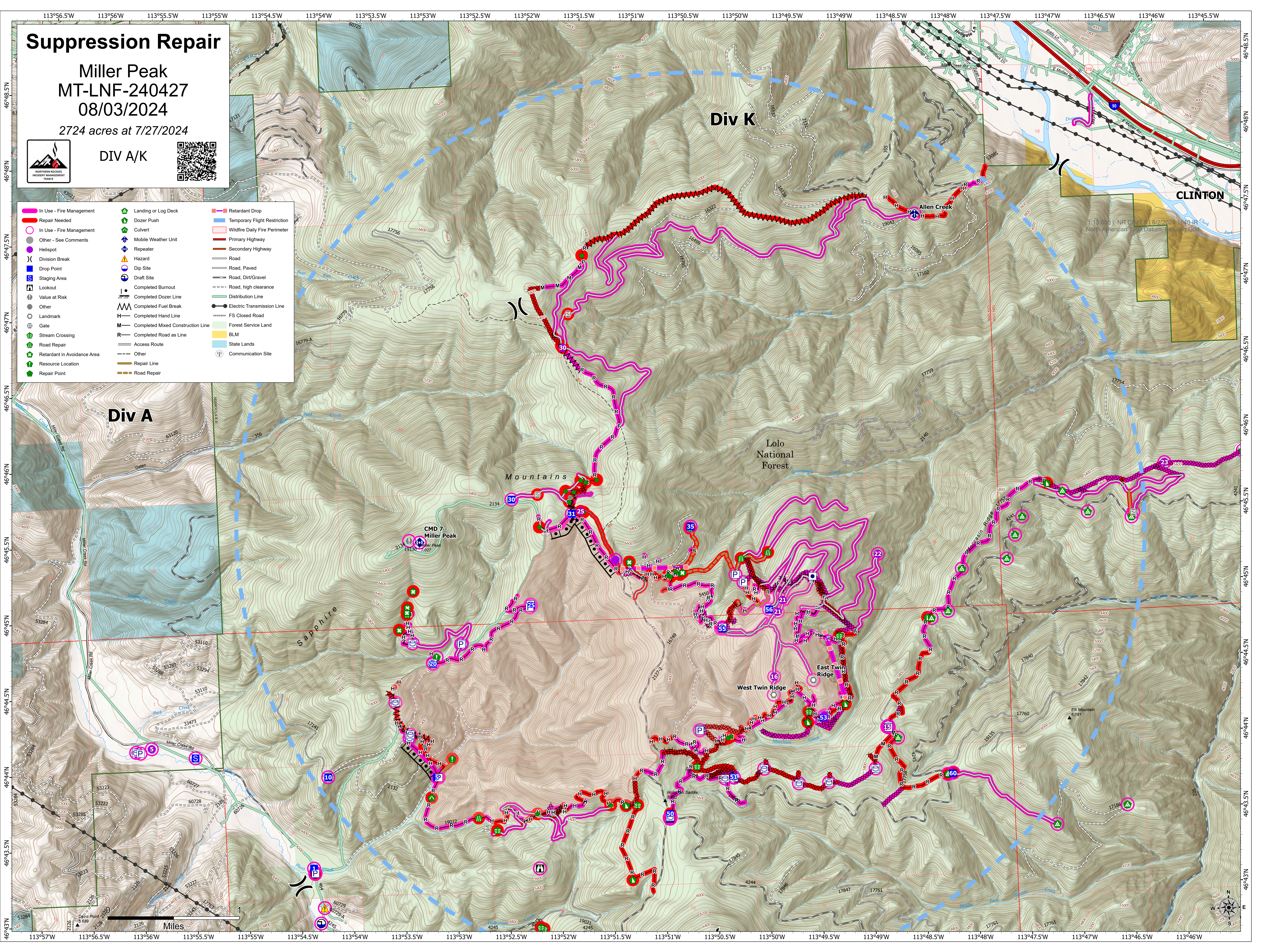
2724 acres at 7/27/2024



DIV A/K



In Use - Fire Management	Landing or Log Deck	Retardant Drop
Repair Needed	Dozer Push	Temporary Flight Restriction
In Use - Fire Management	Culvert	Wildfire Daily Fire Perimeter
Other - See Comments	Mobile Weather Unit	Primary Highway
Helispot	Repeater	Secondary Highway
Division Break	Hazard	Road
Drop Point	Dip Site	Road, Paved
Staging Area	Draft Site	Road, Dirt/Gravel
Lookout	Completed Burnout	Road, high clearance
Value at Risk	Completed Dozer Line	Distribution Line
Other	Completed Fuel Break	Electric Transmission Line
Landmark	Completed Hand Line	FS Closed Road
Gate	Completed Mixed Construction Line	Forest Service Land
Stream Crossing	Completed Road as Line	BLM
Road Repair	Access Route	State Lands
Retardant in Avoidance Area	Other	Communication Site
Resource Location	Repair Line	
Repair Point	Road Repair	



Div A

Div K

CLINTON

Lolo National Forest

Mountains

CMD 7 - Miller Peak

West Twin Ridge

East Twin Ridge

Sapphire

Miles

