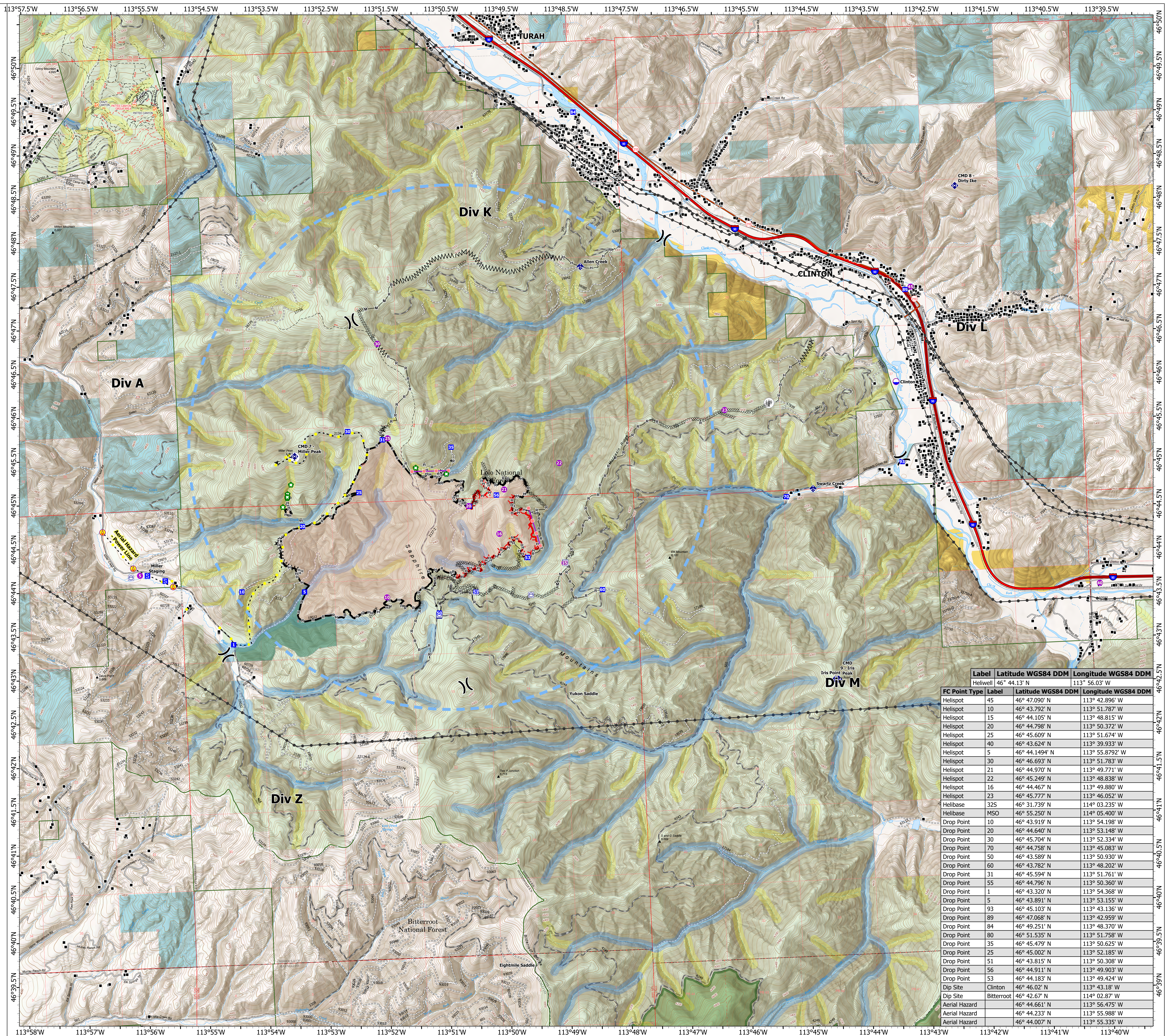


Air Operations

Miller Peak
 MT-LNF-240427
 08/05/2024
 2724 acres at 7/27/2024

- Structure
- Aerial Hazard
- Helispot
- ⊗ Division Break
- Drop Point
- Staging Area
- Retardant in Avoidance Area
- ◆ Mobile Weather Unit
- ◆ Repeater
- ◆ Dip Site
- ⊗ Completed Dozer Line
- ⊗ Completed Fuel Break
- ⊗ Completed Hand Line
- ⊗ Completed Mixed Construction Line
- ⊗ Completed Road as Line
- ⊗ Highlighted Feature
- ⊗ Retardant Drop
- ⊗ Temporary Flight Restriction
- ⊗ Contained
- ⊗ Uncontained
- ⊗ Wildfire Daily Fire Perimeter
- ⊗ Primary Highway
- ⊗ Secondary Highway
- ⊗ Road
- ⊗ Road, Paved
- ⊗ Road, Dirt/Gravel
- ⊗ Road, high clearance
- ⊗ FS Wilderness Boundary
- ⊗ Forest Service Land
- ⊗ Bureau of Land Management Lands
- ⊗ State Lands
- ⊗ Communication Site
- ⊗ Electric Transmission Line
- ⊗ RAA-Intermittent/Ephemeral
- ⊗ RAA-Perennial Water
- ⊗ Plant Creek RNA



Label	Latitude WGS84 DDM	Longitude WGS84 DDM	
Helwell	46° 44.13' N	113° 56.03' W	
FC Point Type	Label	Latitude WGS84 DDM	Longitude WGS84 DDM
Helispot	45	46° 47.090' N	113° 42.896' W
Helispot	10	46° 43.792' N	113° 51.787' W
Helispot	15	46° 44.105' N	113° 48.815' W
Helispot	20	46° 44.798' N	113° 50.372' W
Helispot	25	46° 45.609' N	113° 51.674' W
Helispot	40	46° 43.624' N	113° 39.933' W
Helispot	5	46° 44.1494' N	113° 55.8792' W
Helispot	30	46° 46.693' N	113° 51.783' W
Helispot	21	46° 44.970' N	113° 49.771' W
Helispot	22	46° 45.249' N	113° 48.838' W
Helispot	16	46° 44.467' N	113° 49.880' W
Helispot	23	46° 45.777' N	113° 46.052' W
Helibase	32S	46° 31.739' N	114° 03.235' W
Helibase	MSO	46° 55.250' N	114° 05.400' W
Drop Point	10	46° 43.919' N	113° 54.198' W
Drop Point	20	46° 44.640' N	113° 53.148' W
Drop Point	30	46° 45.704' N	113° 52.334' W
Drop Point	70	46° 44.758' N	113° 45.083' W
Drop Point	50	46° 43.589' N	113° 50.930' W
Drop Point	60	46° 43.782' N	113° 48.202' W
Drop Point	31	46° 45.594' N	113° 51.761' W
Drop Point	55	46° 44.796' N	113° 50.360' W
Drop Point	1	46° 43.320' N	113° 54.368' W
Drop Point	5	46° 43.891' N	113° 53.155' W
Drop Point	93	46° 45.103' N	113° 43.136' W
Drop Point	89	46° 47.068' N	113° 42.959' W
Drop Point	84	46° 49.251' N	113° 48.370' W
Drop Point	80	46° 51.535' N	113° 51.758' W
Drop Point	35	46° 45.479' N	113° 50.625' W
Drop Point	25	46° 45.002' N	113° 52.185' W
Drop Point	51	46° 43.815' N	113° 50.308' W
Drop Point	56	46° 44.911' N	113° 49.903' W
Drop Point	53	46° 44.183' N	113° 49.424' W
Dip Site	Clinton	46° 46.02' N	113° 43.18' W
Dip Site	Bitterroot	46° 42.67' N	114° 02.87' W
Aerial Hazard		46° 44.661' N	113° 56.475' W
Aerial Hazard		46° 44.233' N	113° 55.988' W
Aerial Hazard		46° 44.007' N	113° 55.335' W



0 1 2
 Miles

1:25,000 | NR Team 9 | 8/4/2024 2004 IR
 North American 1983 Datum, Lat/Long Grid

