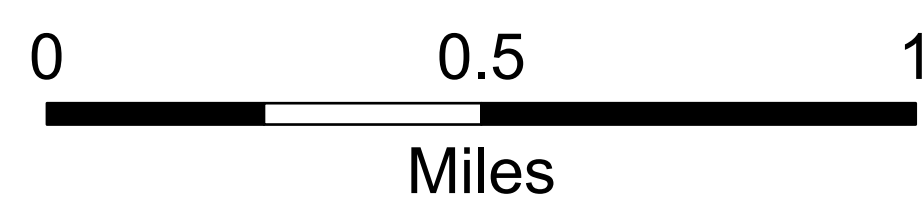
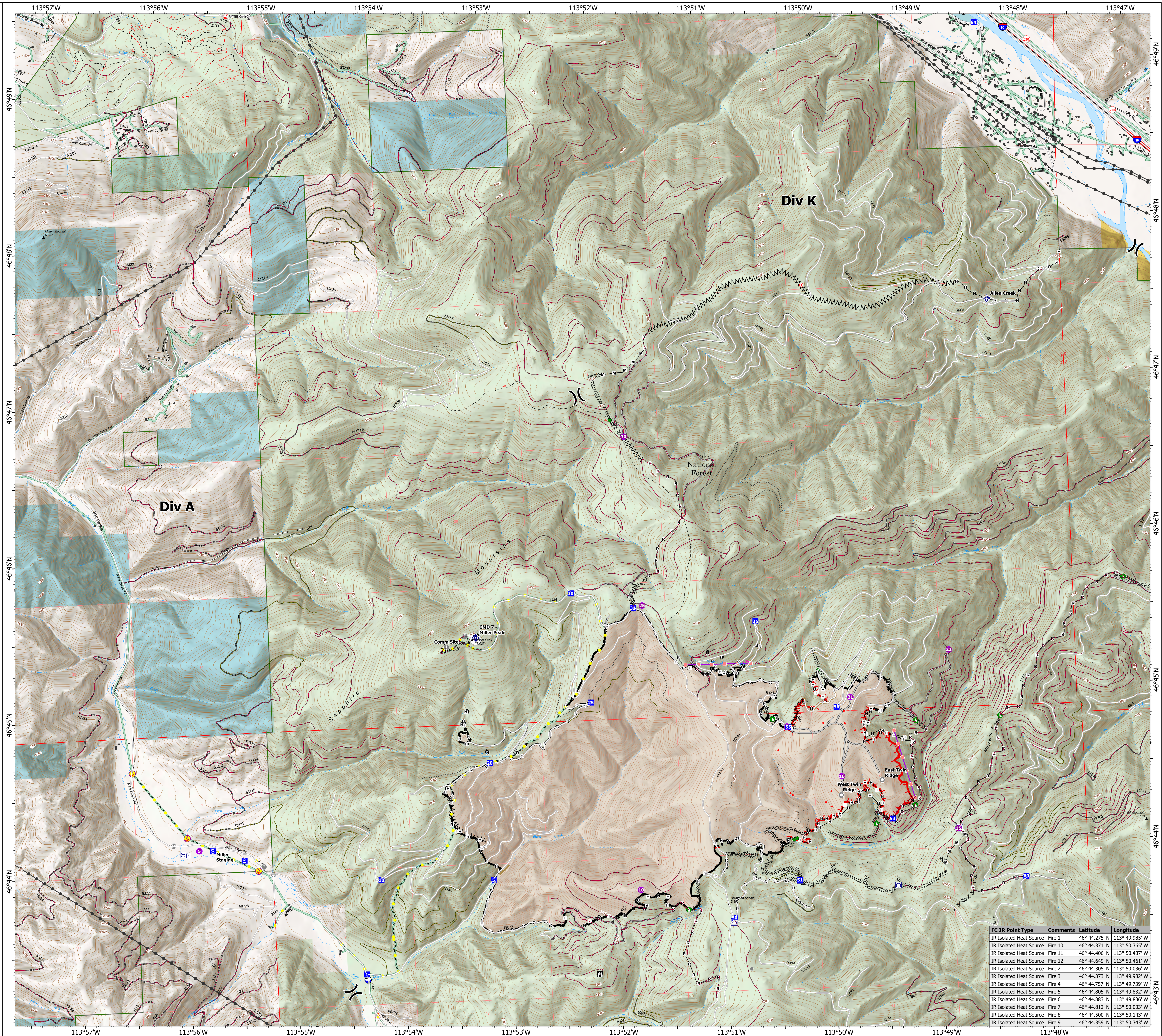


# Operations DIV A/K

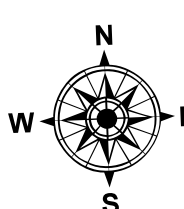
Miller Peak  
MT-LNF-240427  
08/07/2024

2724 acres at 7/27/2024

- ▣ Structure
- Aerial Hazard
- Helispot
- ⌘ Division Break
- Drop Point
- Staging Area
- Lookout
- Hot Spot - Spot Fire
- Value at Risk
- Other
- Landmark
- Gate
- Bridge
- Repair Point
- Dozer Push
- Mobile Weather Unit
- Repeater
- Hazard
- Draft Site
- ⊗ Completed Dozer Line
- ⊗ Completed Fuel Break
- ⊗ Completed Hand Line
- ⊗ Completed Mixed Construction Line
- ⊗ Completed Road as Line
- ⊗ Planned Dozer Line
- Access Route
- Highlighted Feature
- Other
- Repair Line
- Road Repair
- Retardant Drop
- Fire Edge (Field Collection)
- Contained
- Uncontained
- Wildfire Daily Fire Perimeter
- Primary Highway
- Secondary Highway
- Road
- Road, Paved
- Road, Dirt/Gravel
- Road, high clearance
- FS Closed Road
- Forest Service Land
- Bureau of Land Management Lands
- State Lands
- Communication Site
- Distribution Line
- Electric Transmission Line
- OPEN DURING BEAR SEASON
- GATED ADMIN USE
- BARRIERED - NO ADMIN USE
- IMPASSABLE TO MOTORIZED VEHICLES
- NOT CODED



1:14,000 | NR Team 9 | 8/6/2024 1948 IR  
North American 1983 Datum. Lat/Long Grid



FC IR Point Type	Comments	Latitude	Longitude
IR Isolated Heat Source	Fire 1	46° 44.275' N	113° 49.985' W
IR Isolated Heat Source	Fire 10	46° 44.371' N	113° 50.365' W
IR Isolated Heat Source	Fire 11	46° 44.406' N	113° 50.437' W
IR Isolated Heat Source	Fire 12	46° 44.649' N	113° 50.461' W
IR Isolated Heat Source	Fire 2	46° 44.305' N	113° 50.036' W
IR Isolated Heat Source	Fire 3	46° 44.373' N	113° 49.982' W
IR Isolated Heat Source	Fire 4	46° 44.757' N	113° 49.739' W
IR Isolated Heat Source	Fire 5	46° 44.805' N	113° 49.832' W
IR Isolated Heat Source	Fire 6	46° 44.883' N	113° 49.836' W
IR Isolated Heat Source	Fire 7	46° 44.812' N	113° 50.033' W
IR Isolated Heat Source	Fire 8	46° 44.500' N	113° 50.143' W
IR Isolated Heat Source	Fire 9	46° 44.359' N	113° 50.343' W