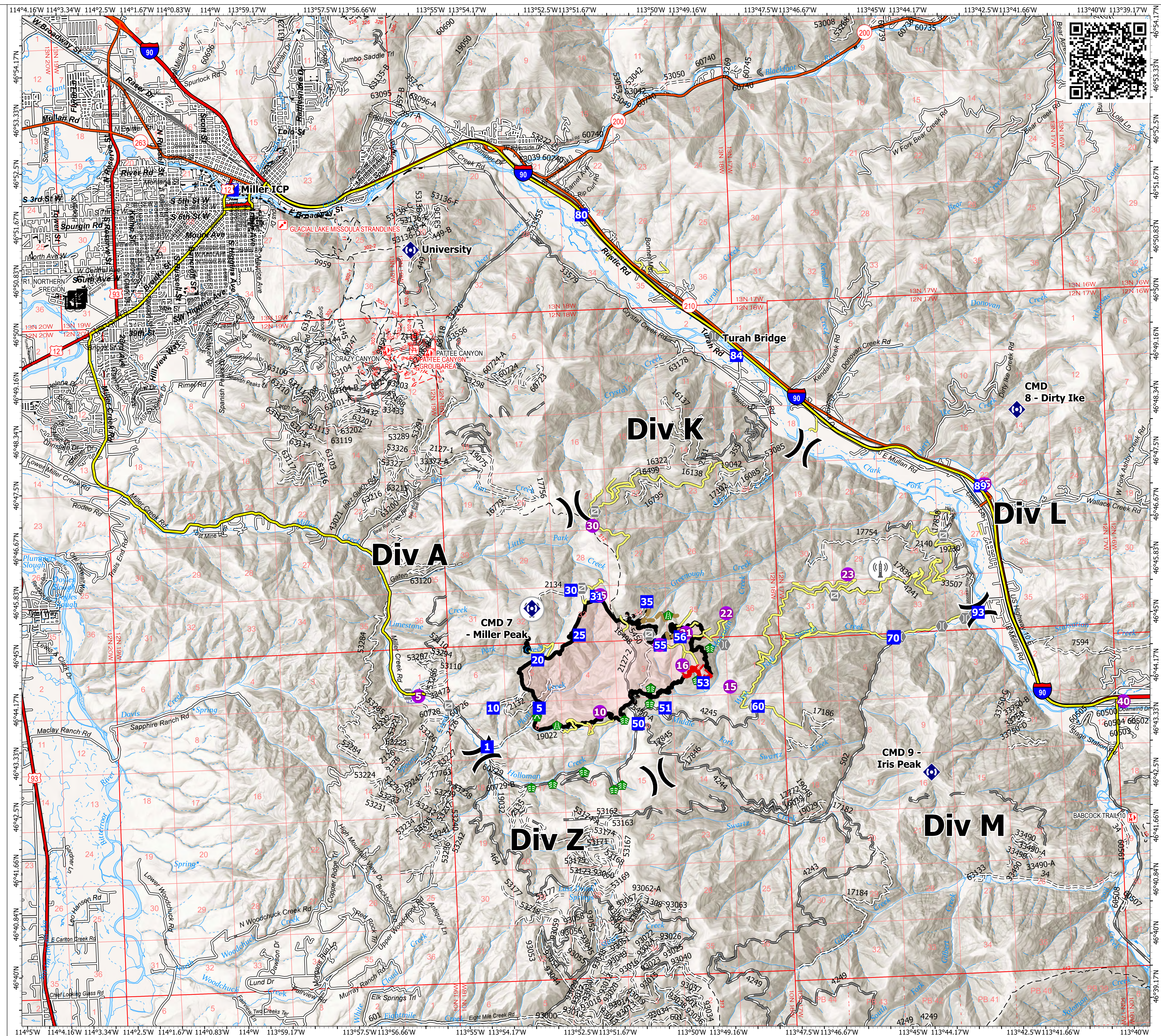


Communications

Miller Peak
 MT-LNF-240427
 08/09/2024
 2724 acres at 7/27/2024

- Helispot
- ⌘ Division Break
- ▣ Incident Command Post
- Drop Point
- ⊠ Closure
- ⊙ Gate
- ⊙ Bridge
- 🌿 Stream Crossing
- 🛠 Road Repair
- 🌿 Culvert
- 📡 Repeater
- Access Route
- Road Repair
- Contained
- Uncontained
- ▭ Wildfire Daily Fire Perimeter
- 📡 Communication Site
- Primary Highway
- Secondary Highway
- Road
- Road, Paved
- Road, Dirt/Gravel
- Road, high clearance
- Main Travel Route

FC Point Type	Label	Latitude WGS84 DDM	Longitude WGS84 DDM
Drop Point	1	46° 43.320' N	113° 54.368' W
Drop Point	10	46° 43.919' N	113° 54.198' W
Drop Point	20	46° 44.640' N	113° 53.148' W
Drop Point	25	46° 45.002' N	113° 52.185' W
Drop Point	30	46° 45.709' N	113° 52.234' W
Drop Point	31	46° 45.594' N	113° 51.761' W
Drop Point	35	46° 45.479' N	113° 50.625' W
Drop Point	5	46° 43.891' N	113° 53.155' W
Drop Point	50	46° 43.589' N	113° 50.930' W
Drop Point	51	46° 43.815' N	113° 50.306' W
Drop Point	53	46° 44.183' N	113° 49.424' W
Drop Point	55	46° 44.796' N	113° 50.360' W
Drop Point	56	46° 44.911' N	113° 49.903' W
Drop Point	60	46° 43.782' N	113° 48.202' W
Drop Point	70	46° 44.758' N	113° 45.083' W
Drop Point	80	46° 51.535' N	113° 51.758' W
Drop Point	84	46° 49.251' N	113° 48.370' W
Drop Point	89	46° 47.068' N	113° 42.959' W
Drop Point	93	46° 45.103' N	113° 43.136' W
Helibase	MS0	46° 55.250' N	114° 05.400' W
Helispot	10	46° 43.792' N	113° 51.787' W
Helispot	15	46° 44.105' N	113° 48.815' W
Helispot	16	46° 44.467' N	113° 49.880' W
Helispot	20	46° 44.796' N	113° 50.372' W
Helispot	21	46° 44.970' N	113° 49.771' W
Helispot	22	46° 45.249' N	113° 48.838' W
Helispot	23	46° 45.777' N	113° 46.052' W
Helispot	25	46° 45.609' N	113° 51.674' W
Helispot	30	46° 46.609' N	113° 45.083' W
Helispot	40	46° 43.624' N	113° 39.933' W
Helispot	45	46° 47.090' N	113° 42.896' W
Helispot	5	46° 44.194' N	113° 55.8792' W
Repeater	CMD 7 - Miller Peak	46° 45.444' N	113° 53.232' W
Repeater	CMD 8 - Dirty Ike	46° 48.231' N	113° 42.068' W
Repeater	CMD 9 - Iris Peak	46° 42.648' N	113° 44.341' W
Repeater	University	46° 51.092' N	113° 55.663' W



1:34,000 | NR Team 9 | 8/8/2024 2142 IR
 North American 1983 Datum, Lat/Long Grid