



Incident Action Plan



Sunday June 15, 2025

Day Operations 0600-2200

For Check-in:



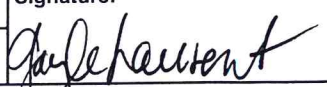
ID-NCF-000181

P1S2M8 (0117)

For Maps: [https://linktr.ee/2025.post?](https://linktr.ee/2025.post?utm_source=linktree_admin_share)
[utm_source=linktree admin share](https://linktr.ee/2025.post?utm_source=linktree_admin_share)

INCIDENT OBJECTIVES	1. Incident Name Post Fire	2. Date Prepared 6/14/2025	3. Time Prepared 1400
	4. Operational Period Sunday, June 15, 2025 DAY SHIFT 0600-2200		
Intent, Objectives			
<p><u>Commander's Intent</u></p> <p>Success is defined as prioritizing fire fighter safety, minimizing potential impacts/threats to human populations, private land, infrastructure and other identified values by effective risk management and enhanced coordination.</p> <p>Ensure that all incident actions reflect a commitment to aviation, responder and public safety utilizing the risk management process outlined in the IRPG, adherence to the 10 Standard Firefighting Orders, mitigation of the 18 Situations That Shout Watch Out and LCES. If you cannot mitigate a tactical hazard to an acceptable level of risk, do not implement the corresponding tactical action until such time as the risk can be satisfactorily mitigated before re-engaging. Ensure this Commander's Intent is clearly communicated and understood by all resources.</p> <p>Treat all Incident Management personnel, cooperators, contractors and the local public with dignity and respect, creating a "no tolerance" atmosphere for harassment, discrimination, alcohol, or federally prohibited substances.</p> <p><u>Operational Objectives</u></p> <ol style="list-style-type: none"> 1. Execute a full suppression strategy utilizing direct, indirect, confine/ contain and mixed tactics to minimize impacts to values at risk and firefighter exposure both in the near and long term timeframe of the incident. 2. Prevent or minimize fire impacts to these prioritized critical values: Highway 12 corridor, Weir Cr. trail and hot springs area, Forest Service infrastructure (bridges, campgrounds, kiosks, etc.), Ashpile Outfitter Camp, Western Pacific Timber lands, and natural resources (cultural/ heritage sites, aquatic species, etc.). 3. Provide Initial Attack within the planning area. 4. Consider operational strategies and tactics that minimize impacts to sensitive areas and anadromous fisheries. <p><u>Management Objectives</u></p> <ol style="list-style-type: none"> 1. Provide timely and accurate dissemination of information to fire-adjacent residences and the jurisdictional agencies. Keep these entities informed of management goals, objectives, successes and challenges on the incident. 2. Manage and/or mitigate impacts to the identified values at risk as prioritized by the jurisdictional agencies. Operations personnel should coordinate with appropriate READ(s) to document, and, if necessary, coordinate mitigation measures related to threatened and endangered species, cultural sites, and minimize introduction and spread of noxious/exotic weeds and aquatic species. 3. Ensure costs related to incident management actions are commensurate with the values at risk. 			
8. ATTACHMENTS (X IF ATTACHED)			
<div style="display: flex; justify-content: space-between;"> <div> <input checked="" type="checkbox"/> ICS 203 <input checked="" type="checkbox"/> ICS 204 <input checked="" type="checkbox"/> ICS 205 <input checked="" type="checkbox"/> ICS 206 <input checked="" type="checkbox"/> ICS 220 </div> <div> <input checked="" type="checkbox"/> Weather Forecast/Fire Behavior Analysis <input checked="" type="checkbox"/> Safety Message <input checked="" type="checkbox"/> Weather Forecast/Fire Behavior Analysis <input checked="" type="checkbox"/> 8 Line – Medical Incident Report </div> </div>			
9. Prepared By (Planning Section Chief)		10. Approved By (Incident Commander)	
Julie Shea - PSCC		Shawn Borgen – ICCI (t)	

ORGANIZATION ASSIGNMENT LIST (ICS 203)

1. Incident Name:		2. Operational Period: DAY 0600-2200	
POST		Date/Time From: 06/15/2025 0600 SUN	Date/Time To: 06/15/2025 2200 SUN
3. Incident Commander(s) and Command Staff:			
IC/UC	JOE SAMPSON SHAWN BORGES (T)	DIVISION/GROUP	A MIKE KING MATT KOSOVICH (T)
INFORMATION OFFICER	JENI GARCIN, KIM SMOLT, STEFANI SPENCER	DIVISION/GROUP	D SCOTT DRAKE KYLE ERRECART (T)
DEPUTY	RICK CONNELL	DIVISION/GROUP	G LOUIS FLEMING CALEB OLANDER (T)
SAFETY OFFICER	LEROY HOLGUIN, ADAM CARR, KEVIN PFISTER MIKE SMITH (T)	DIVISION/GROUP	JASON MONROE JEFF ARMSTRONG (T)
4. Agency/Organization Representative(s):		7b. Air Operations Branch:	
Agency/Organization	Name	AIR OPS BRANCH DIRECTOR	STEVE CROY
NEZ PERCE-CLEARWATER NF	BRANDON KNAPTON RON TIPTON (T)	AIR SUPPORT SUPERVISOR	JEFF POLACK JEFF QUICK
RESOURCE ADVISOR	JIM LUTES KATY BAUER (T)	HELICOPTER MGR	MARK VANDLIK (T)
5. Planning Section:		8. Finance/Administration Section:	
CHIEF	JULIE SHEA	CHIEF	BIDDY SIMET; MANDIE WILLENBERG AMELIA VELASCO (T)
RESOURCES UNIT	PATTY BATES	TIME UNIT	ANNA LOWELL
SITUATION UNIT	LAILA LIENESCH (VIRTUAL)	PROCUREMENT UNIT	TAMMY PETERSON STEW WILLIAMS (T)
DEMOBILIZATION UNIT	GAYLE LAURENT	COMP/CLAIMS UNIT	TORIE KOLLER
FIRE BEHAVIOR ANALYST	MIKE PAGOAGA	COST UNIT	CHELSEA MONKS JENNIFER HEBBLER (T)
GIS SPECIALIST	BRIAN GARDNER		
TECHNOLOGY SUPPORT SPECIALIST	MARY SIMONIS, SUE ROSE		
INCIDENT METEOROLOGIST	TRENT SMITH		
STRATEGIC OPERATION PLANNER	JUSTIN PAPPANI		
LONG TERM ANALYST	JON RIECK		
6. Logistics Section:			
CHIEF	PETER PAPPAS		
DEPUTY	BILL LAUER		
SUPPLY UNIT	DAVE COOPER		
FACILITIES UNIT	PAT NELSON		
GROUND SUPPORT UNIT	BRAD EMERICK		
COMMUNICATIONS UNIT	DALTON BLACK		
MEDICAL UNIT	ROSEMARY MYERS, RAY MINES SADE GALLOWAY (T)		
SECURITY UNIT	BILL HITT		
FOOD UNIT	JUSTIN TRODICK		
ORDERING MANAGER	DARCY WHEELER (V) LYNDA MURPHY		
7. Operations Section:			
PLANNING OPS	ASHLEY SITES JT GILMAN (T)		
LINE OPS	KEVIN SMITH		
9. Prepared By: Name: GAYLE LAURENT		Position/Title: DMOB	
ICS 203		Date/Time: 06/14/2025 2000	
IAP Page		Signature: 	



Fire Weather Forecast



FORECAST NO: 02

PREDICTION FOR: Sunday-Monday

SHIFT DATE: Sunday 06/15/2025

TIME AND DATE ISSUED: 06/14/2025 1900 hrs

INCIDENT: Post Fire

UNIT: Clearwater NF

SIGNED: Trent Smith *Trent R. Smith*

Incident Meteorologist (IMET)

Discussion: Southwesterly flow will persist over the fire location today with a weak disturbance kicking off a few showers and potentially a thunderstorm this afternoon. Temperatures are anticipated to be a few degrees warmer with slightly lower humidity readings. Westerly winds will pick up once again during the afternoon with gusts up to 25 mph in the afternoon.

WEATHER FORECAST FOR TODAY:

Sky/Weather: Partly cloudy. 20% chance of rain showers and 10% chance of thunderstorms in the afternoon.

Max Temperature: Bottom: 81-86; Top: 75-80

Min RH: 27-32 percent.

20 ft Winds:

Lower Valleys: Terrain driven 2-8 mph becoming west 5-10 mph gusts to 20 mph in the afternoon.

Mid-slopes and Ridges: Terrain driven 2-5 mph becoming west 8-13 mph gusts to 25 mph by early afternoon.

Transport Wind: W 10 mph.

Inversion: 500 ft lifting by 0700 PDT reaching 8000 ft MSL by 1500 PDT.

TONIGHT:

Sky/Weather: Partly cloudy. 10% chance of rain showers in the evening.

Min Temperature: 46-51.

Max RH: Bottom: 82-87 percent; Top: 61-68 percent.

20 ft Winds:

Valleys/Lower Slopes: West 5-10 mph becoming terrain driven 2-6 mph after sunset.

Ridges: West 8-13 mph becoming terrain driven 3-8 mph after midnight.

Inversion: Developing after 2100 near 700 ft.

MONDAY:

Sky/Weather: Partly cloudy. 30% chance of rain showers and 15% chance of thunderstorms in the afternoon.

Max Temperature: Bottom: 83-88; Top: 77-82.

Min RH: 24-29 percent.

20 ft Winds:

Lower Valleys: Terrain driven 2-8 mph becoming west 8-13 mph gusts to 25 in the afternoon.

Mid-slopes and Ridges: Terrain driven 3-8 mph becoming west 10-15 mph gusts to 30 mph in the afternoon.

Transport Wind: W 13 mph. **Inversion:** Increasing to 11000 ft MSL by 1400 PDT.

Weather observations can be texted to 406-360-6330 or emailed to trent.smith@noaa.gov

FIRE BEHAVIOR FORECAST

FORECAST NUMBER: 1	TYPE OF FIRE: Wildland Fire
FIRE NAME: POST	OPERATIONAL PERIOD: Sunday, 06/15/2025
DATE ISSUED: June 14, 2025	TIME ISSUED: 1900
UNIT: ID-NCF	SIGNED: Mike Pagoaga - FBAN

WEATHER

Temp: 75-80 **RH:** 27-32%
Wind: Terrain driven shifting to west and increasing 8-13,
gusts up to 25

*Local Weather Thresholds that shout **WATCH OUT**
Temperatures above 85°, Relative Humidity below 20%,
20' winds above 5 mph*

FUELS

Predominant fuels are traditional high load, timber understory (TU5), and moderate load, timber understory (TU2) in continuous mixed conifer. Fuels Moistures at critical levels with 100-hour and 1000-hour fuel moistures near 14%. ERC values approaching the 90th percentile.

Be aware of profuse spotting potential of sub-alpine fir and lichen growing thick on limbs

FIRE BEHAVIOR

General Fire Behavior:

Heavy drought stressed fuels will be the primary driver of fire behavior. Minimal to moderate fire behavior expected as heavy dead fuels consume. High potential for rollout to ignite fuels below.

*Fine Dead Fuel Moisture: 5% unshaded, 7% shaded
Probability of Ignition 50%, Short range spotting potential*

Specific Fire Behavior:

DIV A: Backing and flanking against the slopes and wind. The fire will continue to work uphill toward H-5. This is the driest slope on the fire. Fire behavior may be greater than in other areas.

DIV D: Minimal fire spread expected as the main fire is now on north facing slopes in wetter, less receptive fuels east of H-5.

DIV G: This division has the greatest potential for fire spread due to alignment with west winds and Hwy 12 corridor. Watch for increased spotting potential when winds align with terrain and fuels are at their driest after 1400.

DIV Z: This division is the lowest in elevation and see the hottest fire weather conditions. Snags in this area have potential to fall due to being fire weakened. Snags can be both burned and unburned.

Safety

Keep informed on fire weather conditions and forecasts. Monitor the weather, read, and understand the forecasts, ask questions, and most importantly, share them with your people!

Health & Safety Message

Major Hazards:

- **Driving Highway 12**
 - *Watch out* for other vehicles drifting over the centerline!
 - *Use caution* turning onto and off of the highway.
- **Driving in/out of camp and ICP**
 - Slow your roll, please.
- **Live and dead trees**
 - fire and storm-damaged trees, reports of both types coming down out there.
- **Steep terrain gravity hazards**
 - Be smart about who and how many folks you commit to the steeper portions of the fire.
 - Have a plan for extricating injured personnel – especially from the steeper and longer ground evacuation areas of the fire.
 - Keep in communications with folks working above and below you and leave margin to avoid rolling rocks/rounds/etc.
- **Communications**
 - Sharing forest repeaters – be efficient in your radio transmissions.
 - Limited ability to talk between fire and ICP,
- **Potential for you to respond to public accidents**
 - Long response times from local EMS and law enforcement – you might be the main medical and traffic control resource until additional help arrives.
- **Ticks!**
 - Check and find before they start sucking your blood and possibly gifting you with one of several tick-borne illnesses.

Your Safety Team: Adam Carr, Leroy Holguin, Kevin Pfister
June 15, 2025

Division/Group Assignment List (ICS 204 WF)

Controlled Unclassified Information//Basic

1. Incident Name:				3.			
POST				Branch:		Division/Group: <div style="font-size: 2em; text-align: center;">A</div>	
2. Operational Period: DAY 0600-2200							
Date/Time From: 06/15/2025 0600 SUN		Date/Time To: 06/15/2025 2200 SUN					
4. Operations Personnel							
OPERATIONS CHIEF PLANNING		ASHLEY SITES JT GILMAN (T)		OPERATIONS CHIEF LINE		KEVIN SMITH	
DIVISION/GROUP SUPERVISOR		MIKE KING MATT KOVOVICH (T)					
5. Resources Assigned this Period							
Strike Team / Task Force / Resource Designator		LWD	Leader	Number Persons	Drop Off PT./Time	Pick Up PT./Time	
C-6 CEDAR CITY IHC		06/25	JOHN HUNT	19	BASE CAMP/0700	BASE CAMP/2200	
C-7 FLATHEAD IHC		06/26	MATT DELANY	23	BASE CAMP/0700	BASE CAMP/2200	
C-10 HC2IA - DILLON INTERAGENCY - CREW #1		06/23	BRYCHAN DEMONEY- GROSS	19	BASE CAMP/0700	BASE CAMP/2200	
6. Control Operations/Work Assignments:							
Continue direct handline.							
7. Special Instructions:							
8. Division/Group Communication Summary							
Function	Channel	RX Frequency N/W	RX Tone/NAC	TX Frequency N/W	TX Tone/NAC	Mode	
COMMAND	3	171.5750		166.2625	156.7	A	
COMMAND	4	171.5750		166.2625	162.2	A	
TACTICAL	11	169.1250		169.1250		A	
AIR TO GROUND	10	167.9875		167.9875			
9. Prepared By (Resource Unit Leader)			Approved By (Planning Section Chief)			Date	Time
PATTY BATES			JULIE SHEA			06/14/2025	2100

Controlled Unclassified Information//Basic

Division/Group Assignment List (ICS 204 WF)

Controlled Unclassified Information//Basic

1. Incident Name:				3.			
POST				Branch:		Division/Group: G	
2. Operational Period: DAY 0600-2200							
Date/Time From: 06/15/2025 0600 SUN		Date/Time To: 06/15/2025 2200 SUN					
4. Operations Personnel							
OPERATIONS CHIEF PLANNING		ASHLEY SITES JT GILMAN (T)		OPERATIONS CHIEF LINE		KEVIN SMITH	
DIVISION/GROUP SUPERVISOR		LOUIS FLEMING CALEB OLANDER (T)					
5. Resources Assigned this Period							
Strike Team / Task Force / Resource Designator		LWD	Leader	Number Persons	Drop Off PT./Time	Pick Up PT./Time	
C-1 TRAPPER CREEK HC2IA		06/24	NAT SUPOLA	22			
C2 GRAYBACK FORESTRY, HC2IA		06/24	MATT DOUGHERTY	22			
C-3 PALOUSE CREW HC2IA		06/24	CHAD E BORG	19			
C5 RUBY MOUNTAIN IHC		06/25	JUSTIN ZUBALA; ERICH HANXLEDEN (T)	21			
C4 VALE IHC			JOHN HUNT	24			
TFLD RYAN WILLIAMS				1			
O-40 TFLD (T) JONATHON FUENTES				1			
O-25 EMPF BEST PRACTICE MEDICINE		06/28	SAM HILL	1			
E3 AMBO1 BEST PRACTICE MEDICINE		06/25	MISTY BAUER; ETHAN BIEDERMANN	2			
6. Control Operations/Work Assignments:							
Construct direct handline where possible. Continue to improve fuel break work as necessary and install plumbing when available.							
7. Special Instructions:							
8. Division/Group Communication Summary							
Function	Channel	RX Frequency N/W	RX Tone/NAC	TX Frequency N/W	TX Tone/NAC	Mode	
COMMAND	3	171.5750		166.2625	156.7	A	
COMMAND	4	171.5750		166.2625	162.2	A	
TACTICAL	12	166.5625		166.5625		A	
AIR TO GROUND	10	167.9875		167.9875			
9. Prepared By (Resource Unit Leader)			Approved By (Planning Section Chief)			Date	
PATTY BATES			JULIE SHEA			06/14/2025	
						Time	
						2100	

Division/Group Assignment List (ICS 204 WF)

Controlled Unclassified Information//Basic

1. Incident Name:				3.			
POST				Branch:		Division/Group: Z	
2. Operational Period: DAY 0600-2200							
Date/Time From: 06/15/2025 0600 SUN		Date/Time To: 06/15/2025 2200 SUN					
4. Operations Personnel							
OPERATIONS CHIEF PLANNING		ASHLEY SITES JT GILMAN (T)		OPERATIONS CHIEF LINE		KEVIN SMITH	
DIVISION/GROUP SUPERVISOR		JASON MONROE JEFF ARMSTRONG (T)					
5. Resources Assigned this Period							
Strike Team / Task Force / Resource Designator	LWD	Leader	Number Persons	Drop Off PT./Time	Pick Up PT./Time		
E12 FNF - ENGINE 682	06/28	CLINTON DEAN	7				
E-19 WTT2 MADISON FD	06/28	HOLDEN YORGASON	2				
O-28 FMOD - FALLER MODULE - ALASKA CUTTERS	06/27	RONDA LECLAIR; JAMES LECLAIR	2				
O-30 FMOD MILLER CREEK REFORESTATION	06/27	NIC JONES; JORDAN LAMBER	2				
O-24 EMPF BEST PRACTICE MEDICINE LLC	06/28	TREVOR LEARY	1				
E-16 AMBO 2 AERIE BACKCOUNTRY A03397	06/28	TRENTON HARPER	2	H1/			
6. Control Operations/Work Assignments:							
<p>Patrol and monitor Highway 12 to minize impact to the highway corridor.</p> <p>Post lookouts on the east and west end of the fire.</p> <p>Snag fire edge as needed and look for opportunities to go direct.</p>							
7. Special Instructions:							
<p>Be cognizant of public and commercial traffic traveling along the highway at high rates of speed.</p>							
8. Division/Group Communication Summary							
Function	Channel	RX Frequency N/W	RX Tone/NAC	TX Frequency N/W	TX Tone/NAC	Mode	
COMMAND	3	171.5750		166.2625	156.7	A	
COMMAND	4	171.5750		166.2625	162.2	A	
TACTICAL	11	169.1250		169.1250		A	
AIR TO GROUND	10	167.9875		167.		A	
9. Prepared By (Resource Unit Leader)		Approved By (Planning Section Chief)			Date	Time	
PATTY BATES		JULIE SHEA			06/14/2025	2100	

ICS-220 AIR OPERATIONS SUMMARY

Prepared By: Jeff Polack - ASGS

Prepared Time:1900

1. INCIDENT NAME: <i>Post Fire</i>	2. OPS PERIOD DATE: 06/15/2025	END TIME: TBD	GIC SUNSET: 2035	GIC Pumpkin: 2105	GIC SUNRISE: 06/14 0453
3. REMARKS (Safety Notes, Hazards, and Air Operations Special Equipment, etc.): <i>Keep communications, clear, concise, brief.</i>		4. READY ALERT AIRCRAFT *Call Dispatch to order Air Ambulances.			
Note: Status was current as of the time this report was posted. Be advised that changes occur constantly.					

CHECK frequencies closely!

6. POSITION	NAME	PHONE #	7. FREQUENCIES	AM	FM	8. FIXED-WING- Type/ Make-Model/ N#/ Base
NCF / COD AVIATION OFFICER	Evan Day	208-507-1649	AIR/AIR PRIMARY IA	132.2250		ORDER ALL AIRCRAFT THROUGH A/C COORD
IDL AVIATION PROGRAM MANAGER	Corrie Ivey	208-982-1354	IDL Air/Ground		151.1450	SMOKEJUMPER AIRCRAFT/SMKJs J16 SPOTTER + 12
HELICOPTER PROGRAM MANAGER	Jeremy Beeson	208-507-1649	Nez-Clear Air/Ground 1 A/G #17		167.9875	
NGF/IDL TANKER BASE	ATB CLOSED		Nez-Clear Air/Ground 2 A/G #45		167.6500	
NCF DISPATCH AIRCRAFT DESK	Call AC Coord	208-983-8155	NATIONAL FLT FOLLOW		168.6500 110.9 TX/RX	
GVC DISPATCH	IA FLOOR SUP. AIRCRAFT COORD.	208-719-6014 208-719-6031	AIR GUARD		168.6250 110.9 TX	
GVC DISPATCH	24-HOUR	208-983-6800	GVC-TANKER BASE RAMP		124.125	
NOTES: POST Freqs - A/A primary 118.4750 - A/A secondary 123.8750 Military Training Routes IR301 & IR307 will be checked by dispatch						

9. HELICOPTERS

CALL SIGN / FAA N#	TYPE	MAKE/ MODEL	BASE	AVAIL	REMARKS	CALL SIGN / FAA N#	TYPE	MAKE/ MODEL	BASE	AVAIL	REMARKS
H-944H	T3	Bell	GIC	AL	Manager + 7	UR31	T3	Alta-X	Powell	AL	IR, PSD
H-406KT	T1	CH47D	GIC	AL	Manager-BUCKETS ONLY						
HT-115	T1	Sikorsky	GIC	Committed	Manager-BUCKETS ONLY						
HT-660FS	T1	Sikorsky	GIC	Committed	Manager-BUCKETS ONLY						
H-407RL	T3	Bell	Powell	AL	Manager + 7 short haul						

INCIDENT RADIO COMMUNICATIONS PLAN				Incident Name Post		Date/Time Prepared 6/14/25		Operational Period Date/Time 6/15/25 0600 - 2200			
Ch #	Function	Channel Name/Trunked Radio System Talkgroup	Assignment	RX Freq	N or W	RX Tone/NAC	TX Freq	N or W	Tx Tone/NAC	Mode A, D or M	Remarks
1	Dispatch	CLW-E Beaver Ridge		171.5750			166.2625		100.0	A	
2	Dispatch	CLW-E Diablo		171.5750			166.2625		151.4	A	
3	Command	CLW-E Bear Mt	Command	171.5750			166.2625		156.7	A	Coverage from Fire
4	Command	CLW-E Rocky Pt	Command	171.5750			166.2625		162.2	A	Coverage from ICP
5	Dispatch	CLW-N Osier		170.5000			165.0125		100.0	A	
6	Dispatch	CLW-S Coolwater		172.2250			165.7000		151.4	A	
7	Dispatch	CLW-S Castle Bt		172.2250			165.7000		156.7	A	
8	Dispatch	ICSO Rocky Pt		154.1150			156.0150		186.2	A	
9	Dispatch	ICSO Castle Bt		154.1150			156.0150		88.5	A	
10	A/G	NCF A/G 17	A/G	167.9875			167.9875			A	
11	Tactical	Fire Tac 1	Div A/Z	169.1250			169.1250			A	
12	Tactical	Fire Tac 2	Div D/G	166.5625			166.5625			A	
13	MED	EMS 2		155.2800			155.2800		156.7	A	IWI Grangeville
14	Local	COM USE 1		163.7125			163.7125			A	
15	Local	COM USE 2		168.6125			168.6125			A	IWI
16	AirGuard	Air Guard	AIRGUARD	168.6250			168.6250		110.9	A	Emergency Use Only
Prepared by (Communications Unit) Dalton Black COM1				Incident Location County		State		Latitude		N Longitude W	

The convention calls for frequency lists to show four digits after the decimal place, followed by either an "N" or a "W", depending on whether the frequency is narrow or wide band. Mode refers to either "A" or "D" indicating analog or digital (e.g. Project 25) or "M" indicating mixed mode. All channels are shown as if programmed in a control station, mobile or portable radio. Repeater and base stations must be programmed with the Rx and Tx reversed.

MEDICAL PLAN (ICS 206)

1. Incident Name: Post Fire		2. Operational Period: Date From: 06/15/25 Time From: 0600		Date To: 06/15/25 Time To: 2200			
3. Air Ambulances:							
Name	Location	Contact Number(s)/Frequency	Paramedics on Site?				
Life Flight Network	MT, ID	911	<input checked="" type="checkbox"/> Yes <input type="checkbox"/> No				
Two Bear Air	Kallispell, MT	911	<input type="checkbox"/> Yes <input checked="" type="checkbox"/> No				
			<input type="checkbox"/> Yes <input type="checkbox"/> No				
			<input type="checkbox"/> Yes <input type="checkbox"/> No				
			<input type="checkbox"/> Yes <input type="checkbox"/> No				
			<input type="checkbox"/> Yes <input type="checkbox"/> No				
4. Transportation (indicate air or ground):							
Ambulance Service	Location	Contact Number(s)/Frequency	Level of Service				
MESI	Missoula, MT	911	<input checked="" type="checkbox"/> ALS <input type="checkbox"/> BLS				
Kooskia	Kooskia, ID	911	<input type="checkbox"/> ALS <input checked="" type="checkbox"/> BLS				
			<input type="checkbox"/> ALS <input type="checkbox"/> BLS				
			<input type="checkbox"/> ALS <input type="checkbox"/> BLS				
5. Hospitals:							
Hospital Name	Address, Latitude & Longitude if Helipad	Contact Number(s)/Frequency	Travel Time		Trauma Center	Burn Center	Helipad
			Air	Ground			
ST Patrick Missoula, MT	LAT- N 46.52.31 LONG- W 113.59.58		20 min	1.5 hrs	<input checked="" type="checkbox"/> Yes Level: 2	<input type="checkbox"/> Yes <input type="checkbox"/> No	<input checked="" type="checkbox"/> Yes <input type="checkbox"/> No
Syringa General	LAT- N45.56.30 LONG- W116.07.80			2 hrs	<input type="checkbox"/> Yes Level: _____	<input type="checkbox"/> Yes <input checked="" type="checkbox"/> No	<input type="checkbox"/> Yes <input checked="" type="checkbox"/> No
					<input type="checkbox"/> Yes Level: _____	<input type="checkbox"/> Yes <input type="checkbox"/> No	<input type="checkbox"/> Yes <input type="checkbox"/> No
					<input type="checkbox"/> Yes Level: _____	<input type="checkbox"/> Yes <input type="checkbox"/> No	<input type="checkbox"/> Yes <input type="checkbox"/> No
					<input type="checkbox"/> Yes Level: _____	<input type="checkbox"/> Yes <input type="checkbox"/> No	<input type="checkbox"/> Yes <input type="checkbox"/> No
6. Special Medical Emergency Procedures: 							
<input checked="" type="checkbox"/> Check box if aviation assets are utilized for rescue. If assets are used, coordinate with Air Operations.							
7. Prepared by (Medical Unit Leader): Name: <u>Ray Mines</u> Signature: <u>Ray Mines</u> <small>Digitally signed by Ray Mines</small>							
8. Approved by (Safety Officer): Name: _____ Signature: _____							
ICS 206		IAP Page _____		Date/Time: <u>06/14/2025 1500</u>			

PUBLIC INFORMATION PLAN	1. Incident Name: POST FIRE	2. Operational Period Date: 6/15/2025 From: 0600 to 2200
3. Employee use of cameras, texting, and social media Most agencies allow employees to send text messages, emails, or post photos and videos about work-related activities when <u>not</u> on government time. Stay Alert! Don't let taking a picture or sending a text distract you and jeopardize your or someone else's safety. Don't share anything using social media (Twitter, Facebook, Flickr, etc.) that you wouldn't want your mother or your supervisor to read or see. Remember - anything you say, post, or photograph during an incident can be part of the public record. Regardless of your position, agency or affiliation you and all fire management resources, work for and represent the hosting unit. Ensure your actions reflect this responsibility. If you take a picture while on government time it is considered government property regardless whether or not you use your personal camera.		
4. Answering general questions from the public As firefighting resources, you are representing your respective organization and the host agency. Be on your best behavior, you are in the public eye as a professional and national resource. When asked a question, be polite, friendly, kind, and courteous. If asked questions about overarching policies, do not give your personal opinion or guess. The answer should be the perspective of the agency. Policy questions should be referred to the Incident PIO for follow-up. You should not hesitate to answer any <u>general</u> questions about wildland fire, the current fire, or your agency. If you don't know an answer, don't guess – just give an honest “I don't know” and try to refer the individual to the Team PIO or a local Forest resource.		
5. Interactions with members of the news media Employees performing their duties on an incident may be photographed or recorded at any time without their permission. While most reporters identify themselves before asking questions, taking pictures, or making video or audio recordings, they are not required to do so and some may choose not to identify themselves even when asked. Media requests for interviews should be directed to a Public Information Officer or to the Incident Commander.		
6. Release of incident information Public Information Officers are assigned to the fire to provide current information to the public and the news media. Release of specific or sensitive information about the fire requires advance approval of the Incident Commander or his/her designee.		
7. Media and VIP access to closed areas and to the fireline Members of the media may work freely in any area open to the public. The Incident Command Post is <u>not</u> open to the public unless someone is acting in an official capacity, such as a partner. Media and VIPs must work through the Incident Command Team to gain access to area's closed to the public. As a national Incident Command Team, it is policy to provide news media access to incidents, including wildland fires when it is safe to do so. Members of the media and VIPs may be escorted into closed areas and to the fireline with prior approval of the Incident Commander or his/her designated representative. Visitors to the fireline are required to wear Personal Protective Equipment, receive a safety briefing, and must be escorted by a person qualified as a single resource boss or other appropriate escort approved by the Incident Commander.		
8. Special Notes/Situation Remarks Fire Information Phone Number: 208-823-8586 Fire Information Email: 2025.post@firenet.gov		
9. Prepared by (Public Information Officer) Jeni Garcin, PIOC	10. Approved by (Incident Commander)	

Post Fire Finance Contact:
Amelia Velasco, Finance Section Chief (T)
(208) 569-8238

Post Fire Finance Email:
2025.post.finance@firenet.gov

Name & Contact # for Person Placing Order:

ORDER # _____

Line Order

Date & Time Order Was Placed		Location and Time for Delivery (Div/LZ/DP/Lat Long)		Mode of Delivery (Ex: Driven/Helo/DIVS to pickup)	
<input type="text"/>		<input type="text"/>		<input type="text"/>	
<input type="text"/>		<input type="text"/>		<input type="text"/>	
#	Item	Quantity	#	Item	Quantity
1	Meals Breakfast		25	Drip Torch Mix 5gal Mix= 3 1/2gal Diesel : 1 gal Gas	
2	Meals Lunch		26	Line Spike Hygiene Kit	
3	Meals Dinner		27	Backpack Pump	
4	Meals MRE's/case		28	Folding Tank - Size: <input type="text"/>	
5	Water 5 Gal Cubees		29	Pumpkin - Size: <input type="text"/>	
6	Gatorade Case		30	Hose 1 1/2"	
7	Batteries AA Flat		31	Hose 1"	
8	Batteries Specify Type: <input type="text"/>		32	Hose 3/4"	
9	Flagging Rolls		33	Reducer 1 1/2" X 1"	
10	Tarps/Plastic		34	Reducer 1" X 3/4"	
11	Parachute Cord		35	Gated Wye 1 1/2"	
12	Garbage Bags Box		36	Gated Wye 1"	
13	20 Person First Aid Kit		37	Gated Wye 3/4"	
14	Fuel (raw) Diesel 5 Gals		38	Shut Off Valve 3/4"	
15	Fuel (raw) Unleaded 5 Gals		39	In-Line Tee 1 1/2" X 1"	
16	Bar Oil 6 Pack		40	Nozzle 1 1/2" KK	
17	2-cycle oil/pumps Quarts		41	Nozzle 1" Forestry	
18	2-cycle oil/saws		42	Nozzle 3/4" Garden	
19	Tool Shovel		43	Chainsaw Kit	
20	Tool Pulaski		44	Mark 3 Pump w/ Kit (No Fuel) Control# _____	
21	Tool Combi		45	Lightweight Pump w/ Kit (No Fuel) Control# _____	
22	Tool Specify Type: <input type="text"/>				
23	Fusee Case		46	Sprinkler Kit	
24	Drip Torch		47	MISC	
Order Received in Supply by (name):			Time:		
Order Received in Transportation by (name):			Time:		
Order Received in Helibase by(name):			Time:		
Order Shipped to Line Unit by (name):			Time:		

Clear / Reset

Print

Save &/or Submit

Northern Rockies Chainsaw Parts Order Form

Please see the back page for part order numbers and items requiring an approved Property Loss and Damage form.

Name:		Gen. Msg #:	
Resource #:		Request Date:	
Contact #:		Need by Date/Time:	
TO BE FILLED BY: (circle one): <input type="checkbox"/> Buying Team		<input type="checkbox"/> Home Unit	<input type="checkbox"/> Cache

Chainsaw Information

Make (circle one or fill in):	<input type="checkbox"/>	Stihl	<input type="checkbox"/>	Husqvarna	<input type="checkbox"/>	Other:								
Model:														
Serial #														
Bar Length (circle one):	<input type="checkbox"/>	20"	<input type="checkbox"/>	24"	<input type="checkbox"/>	28"	<input type="checkbox"/>	30"	<input type="checkbox"/>	32"	<input type="checkbox"/>	36"	<input type="checkbox"/>	Other:

Request:

[illegible]

For Sprocket & Chain Orders (circle one or fill in):

# of Drivers:				
Pitch (*):	<input type="text" value="3/8"/>	<input type="text" value=".325"/>	Other:	
Gauge:	<input type="text" value=".50"/>	<input type="text" value=".063"/>	Other:	
Tooth Layout:	<input type="text" value="Full"/>	<input type="text" value="Semi-Skip"/>	<input type="text" value="Full Skip"/>	
Tooth Cut:	<input type="text" value="Chisel"/>	<input type="text" value="Semi-Chisel"/>	Other:	
# of Sprocket Teeth:				

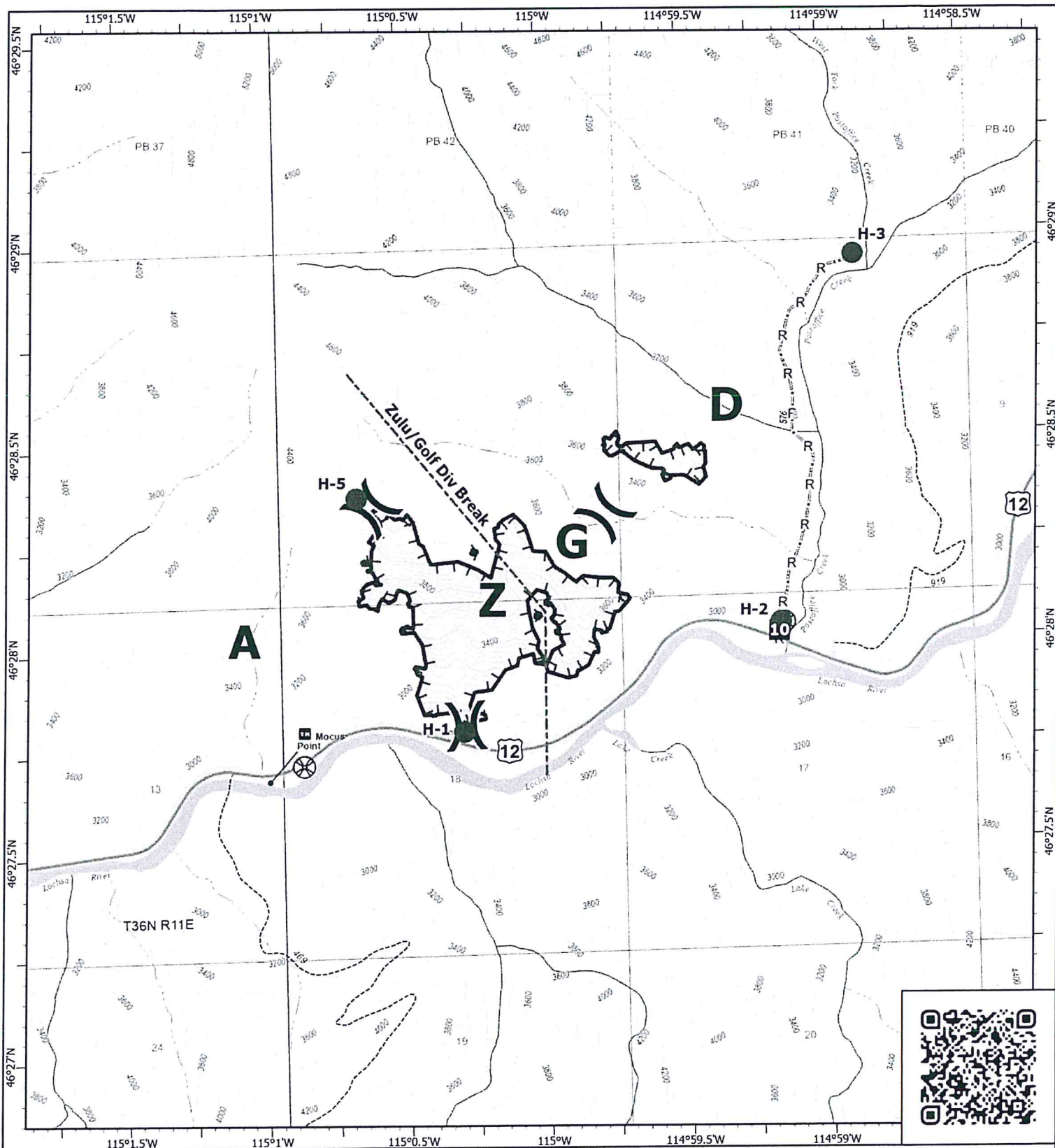
Concurrence (Line Supervisor i.e. DIVS): _____

☐ Supply Unit Leader has checked that the items ordered do not need an approved Property Loss & Damage Form, or that the approval is attached. (*Supply Unit Leader checks box and initials here:*_____).

First source of supply is Cache, shaded blocks indicate items available thru Northern Rockies Cache. Items requiring an approved Property Loss and Damage form are in a separate list at the bottom.												
PART	034/341	360/MS360	MS361	MS362	038/381	044/MS440	MS441	460/MS461	MS462	0640/650	MS660	MS880
Spark Plug (NFES# 000344)	Bosch WSR6F NGK BPMR7A Champion RC16Y	Bosch WSR6F NGK BPMR7A Champion RC16Y	Bosch WSR6F NGK BPMR7A Champion RC16Y	Bosch WSR6F NGK BPMR7A Champion RC16Y	Bosch WSR6F NGK BPMR7A Champion RC16Y	Bosch WSR6F NGK BPMR7A Champion RC16Y	Bosch WSR6F NGK BPMR7A Champion RC16Y	Bosch WSR6F NGK BPMR7A Champion RC16Y	Bosch USR7AC NGK CMR6H	Bosch WSR6F NGK BPMR7A Champion RC16Y	Bosch WSR6F NGK BPMR7A Champion RC16Y	Bosch WSR6F NGK BPMR7A Champion RC16Y
Needle Cage Bearing (NFES# 066565)	9512-933-2380	9512-933-2380	9512-933-2380	9512-933-2380	9512-933-3150	9512-933-2380	9512-933-2380	9512-933-2380	9512-933-2380	9512-933-2382	9512-933-2382	9512-933-3170
Retaining Washer for Rim Sprocket	0000-958-1022	0000-958-1022	0000-958-1032	0000-958-1032	0000-958-1231	0000-958-1032	0000-958-1032	0000-958-1032	0000-958-1032	0000-958-1032	0000-958-1032	0000-958-1236
E Clip (NFES# 066517)	9460-624-0801	9460-624-0801	9460-624-0801	9460-624-0801	9460-624-1001	9460-624-0801	9460-624-0801	9460-624-0801	9460-624-0801	9460-624-0801	9460-624-0801	9460-624-1001
Fuel Filter	0000-350-3504	0000-350-3504	0000-350-3504	0000-350-3504	0000-350-3504	0000-350-3504	0000-350-3504	0000-350-3504	0000-350-3518	0000-350-3504	0000-350-3500	0000-350-3504
Air Filter - HD (NFES# 066756)	1125-120-1626	1125-120-1612	1135-120-1600	1140-140-4401	1119-120-1611	0000-955-0801	0000-955-0801	0000-120-1654	1142-140-4402	0000-140-4402	0000-140-4402	0000-140-4402
Pre Filter - OEM	N/A	N/A	N/A	N/A	1119-120-1500	0000-955-0801	0000-955-0801	0000-141-0300	N/A	0000-141-0300	0000-141-0300	0000-141-0300
Bar Nut (NFES# 066661)	0000-955-0801	0000-955-0801	0000-955-0801	0000-955-0801	0000-955-0801	0000-955-0801	0000-955-0801	0000-955-0801	0000-995-0803	0000-955-0801	0000-955-0801	0000-955-0903
Inner Slide Plate	1122-664-1000	1122-664-1000	1122-664-1000	1122-664-1000	1119-664-1000	1122-664-1001	1138-664-1000	1128-664-1001	1128-664-1001	1128-664-1001	1128-664-1001	1124-664-1001
STIHL RAPID - Super (RS)												
Chain 3/8" PITCH - .050" GA - DR												
20" - 72 DR	3623-005-0072	3623-005-0072	3623-005-0084	3623-005-0072	3623-005-0072	3623-005-0084	3623-005-0084	3623-005-0072	3623-005-0072	3623-005-0072	3623-005-0072	3623-005-0072
25" - 84 DR (NFES# 006500)	3623-005-0084	3623-005-0084	3623-005-0091	3623-005-0084	3623-005-0091	3623-005-0091	3623-005-0091	3623-005-0091	3623-005-0091	3623-005-0091	3623-005-0091	3623-005-0084
28" - 91 DR	3623-005-0091	3623-005-0091	3623-005-0091	3623-005-0091	3623-005-0091	3623-005-0091	3623-005-0091	3623-005-0091	3623-005-0091	3623-005-0091	3623-005-0091	3623-005-0091
32" - 105 DR	N/A	N/A	N/A	N/A	N/A	N/A	N/A	3623-005-0105	3623-005-0105	3623-005-0105	3623-005-0105	3623-005-0105
STIHL RAPID - Super - Full Skip (RSF)												
Chain 3/8" PITCH - .050" GA - DR												
20" - 72 DR	N/A	3676-005-0072	3676-005-0072	3676-005-0072	3676-005-0072	3676-005-0072	3676-005-0072	3676-005-0072	3676-005-0072	3676-005-0072	3676-005-0072	3676-005-0072
25" - 84 DR	3676-005-0084	3676-005-0084	3676-005-0084	3676-005-0084	3676-005-0084	3676-005-0084	3676-005-0084	3676-005-0084	3676-005-0084	3676-005-0084	3676-005-0084	3676-005-0084
28" - 91 DR	3676-005-0091	3676-005-0091	3676-005-0091	3676-005-0091	3676-005-0091	3676-005-0091	3676-005-0091	3676-005-0091	3676-005-0091	3676-005-0091	3676-005-0091	3676-005-0091
32" - 105 DR	N/A	N/A	N/A	N/A	N/A	N/A	3676-005-0105	3676-005-0105	3676-005-0105	3676-005-0105	3676-005-0105	3676-005-0105
Bar oil: Quantity - Gallon	NFES # 1880											
Bar oil: Quantity - Quart	NFES # 1869											
2 Cycle Oil: Quantity - Quart	NFES # 0341											

The following parts require an approved Property Loss & Damage form prior to ordering:

Guide Bars - 3/8" - .050" GA (STIHL ROLLOMATIC - ES)												
20"	3003-000-8822	3003-000-8822	3003-000-8822	3003-000-8822	3003-000-8822	3003-000-8822	3003-000-8822	3003-000-8822	3003-000-8822	3003-000-8822	3003-000-8822	3003-000-8822
25" (NFES# 066584)	N/A	3003-000-8830	3003-000-8830	3003-000-8830	3003-000-8830	3003-000-8830	3003-000-8830	3003-000-8830	3003-000-8830	3003-000-8830	3003-000-8830	3003-000-8830
28"	N/A	N/A	N/A	N/A	N/A	3003-000-8838	3003-000-8838	3003-000-8838	3003-000-8838	3003-000-8838	3003-000-8838	3003-000-8838
32"	N/A	N/A	N/A	N/A	N/A	3003-000-8846	3003-000-8846	3003-000-8846	3003-000-8846	3003-000-8846	3003-000-8846	3003-000-8846
Rim Sprocket Kit 3/8 - 7T	1125-007-1040	1125-007-1223	1128-007-1000	1135-007-1002	1119-007-1003	1128-007-1000	1128-007-1000	1128-007-1017	1128-007-1000	1122-007-1000	1122-007-1000	N/A
Clutch Drum	Order Sprocket Kit	Order Sprocket Kit	Order Sprocket Kit	Order Sprocket Kit	Order Sprocket Kit	Order Sprocket Kit	Order Sprocket Kit	Order Sprocket Kit	Order Sprocket Kit	Order Sprocket Kit	Order Sprocket Kit	Order Sprocket Kit
Rim Sprocket 3/8 7T (NFES# 066652)	0000-642-1231	0000-642-1023	0000-642-1223	0000-642-1223	0000-642-1223	0000-642-1223	0000-642-1223	0000-642-1223	0000-642-1223	0000-642-1223	0000-642-1223	N/A
Rim sprocket kit 3/8 - 8T	N/A	N/A	1128-007-1001	1128-007-1001	N/A	1128-007-1001	1128-007-1001	1128-007-1001	1128-007-1001	1122-007-1001	1122-007-1001	1124-007-1025
Clutch Drum	Order Sprocket Kit	Order Sprocket Kit	Order Sprocket Kit	Order Sprocket Kit	Order Sprocket Kit	Order Sprocket Kit	Order Sprocket Kit	Order Sprocket Kit	Order Sprocket Kit	Order Sprocket Kit	Order Sprocket Kit	Order Sprocket Kit
Rim Sprocket 3/8 - 8T	N/A	0000-642-1216	0000-642-1216	0000-642-1216	0000-642-1216	0000-642-1216	0000-642-1216	0000-642-1216	0000-642-1216	0000-642-1216	0000-642-1216	0000-642-1216
Clutch	1127-160-2050	1125-160-2005	1128-160-2004	1138-160-2010	1119-160-2000	1128-160-2001	1138-160-2010	1128-160-2004	1142-160-2000	1122-160-2005	1122-160-2002	1124-160-2005
Chain Adjuster Kit	1125-007-1036	1125-007-1021	1125-007-1021	1125-007-1021	1118-664-1600	1125-007-1021	1125-007-1021	1125-007-1021	1125-007-1021	1125-007-1021	1125-007-1021	1124-007-1008
Bump Strip	1121-648-6610	1121-648-6610	1121-648-6610	1121-648-6610	1121-648-6610	1121-648-6610	1121-648-6610	1121-648-6610	1121-648-6610	1121-648-6610	1121-648-6610	1121-648-6610
Starter Rope W/handle	1128-190-3400	1128-190-3400	1128-190-3400	1128-190-3400	1128-190-3400	1128-190-3400	1128-190-3400	1128-190-3400	1128-190-3400	1128-190-3400	1128-190-3400	1128-190-3400
Worm Gear (Oiler)	1125-640-7110	1125-640-7110	1128-640-7112	1128-640-7112	1119-642-1501	1128-640-7112	1128-640-7112	1128-640-7112	1128-640-7112	1122-640-7105	1122-640-7105	1124-640-7512
Manifold Boot	1125-141-2200	1125-141-2200	1135-141-2200	1140-140-2503	1119-140-2500	1128-141-2204	1138-140-2508	1128-141-2204	1142-141-2200	1122-141-2200	1122-141-2201	1124-141-2202



IAP

Post

IDNCF-000181

06/15/2025 Day

149 acres at 06/13/2025 1909hrs



1:24,000 | RIST | 6/14/2025 2243

Acres from IR

North American 1983 Datum, LatLong Grid



Helispot



UAS Launch and Recovery



Division Break



Drop Point

R - Planned Road as Line

Other

Uncontained Fire Edge

Wildfire Perimeter

Scenic Byway

Primary Highway

Road, Not Maintained for Passenger Car

FS Closed Road

Trail

Administrative FS Boundary

[illegible]

MEDICAL PLAN (ICS 206 WF)

Controlled Unclassified Information//Basic

Medical Incident Report					
FOR A NON-EMERGENCY INCIDENT, WORK THROUGH CHAIN OF COMMAND TO REPORT AND TRANSPORT INJURED PERSONNEL AS NECESSARY.					
FOR A MEDICAL EMERGENCY: IDENTIFY ON SCENE INCIDENT COMMANDER BY NAME AND POSITION AND ANNOUNCE "MEDICAL EMERGENCY" TO INITIATE RESPONSE FROM IMT COMMUNICATIONS/DISPATCH.					
Use the following items to communicate situation to communications/dispatch.					
1. CONTACT COMMUNICATIONS / DISPATCH (Verify correct frequency prior to starting report) <i>Ex: "Communications, Div. Alpha. Stand-by for Emergency Traffic."</i>					
2. INCIDENT STATUS: Provide incident summary (including number of patients) and command structure. <i>Ex: "Communications, I have a Red priority patient, unconscious, struck by a falling tree. Requesting air ambulance to Forest Road 1 at (Lat./Long.) This will be the Trout Meadow Medical, IC is TFLD Jones. EMT Smith is providing medical care."</i>					
Severity of Emergency / Transport Priority	<input type="checkbox"/> RED / PRIORITY 1 Life or limb threatening injury or illness. Evacuation need is IMMEDIATE <i>Ex: Unconscious, difficulty breathing, bleeding severely, 2° – 3° burns more than 4 palm sizes, heat stroke, disoriented.</i> <input type="checkbox"/> YELLOW / PRIORITY 2 Serious Injury or illness. Evacuation may be DELAYED if necessary. <i>Ex: Significant trauma, unable to walk, 2° – 3° burns not more than 1-3 palm sizes.</i> <input type="checkbox"/> GREEN / PRIORITY 3 Minor Injury or illness. Non-Emergency transport <i>Ex: Sprains, strains, minor heat-related illness.</i>				
Nature of Injury or Illness & Mechanism of Injury			Brief Summary of Injury or Illness (Ex: Unconscious, Struck by Falling Tree)		
Transport Request			Air Ambulance / Short Haul/Hoist Ground Ambulance / Other		
Patient Location			Descriptive Location & Lat. / Long. (WGS84)		
Incident Name			Geographic Name + "Medical" (Ex: Trout Meadow Medical)		
On-Scene Incident Commander			Name of on-scene IC of Incident within an Incident (Ex: TFLD Jones)		
Patient Care			Name of Care Provider (Ex: EMT Smith)		
3. INITIAL PATIENT ASSESSMENT: Complete this section for each patient as applicable (start with the most severe patient)					
Patient Assessment: See IRPG page 106					
Treatment:					
4. TRANSPORT PLAN: Evacuation Location (if different): (Descriptive Location (drop point, intersection, etc.) or Lat. / Long.) Patient's ETA to Evacuation Location:					
Helispot / Extraction Site Size and Hazards:					
5. ADDITIONAL RESOURCES / EQUIPMENT NEEDS: <i>Example: Paramedic/EMT, Crews, Immobilization Devices, AED, Oxygen, Trauma Bag, IV/Fluid(s), Splints, Rope rescue, Wheeled litter, HAZMAT, Extrication</i>					
6. COMMUNICATIONS: Identify State Air/Ground EMS Frequencies and Hospital Contacts as applicable					
Function	Channel Name/Number	Receive (RX)	Tone/NAC *	Transmit (TX)	Tone/NAC *
COMMAND					
AIR-TO-GRND					
TACTICAL					
7. CONTINGENCY: Considerations: If primary options fail, what actions can be implemented in conjunction with primary evacuation method? Be thinking ahead.					
8. ADDITIONAL INFORMATION: Updates/Changes, etc.					
REMEMBER: Confirm ETA's of resources ordered. Act according to your level of training. Be Alert. Keep Calm. Think Clearly. Act Decisively.					