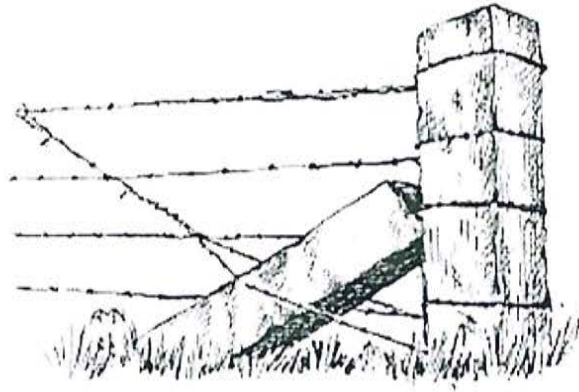


Post



Incident Action Plan



Monday June 16, 2025

Day Operations 0600-2200



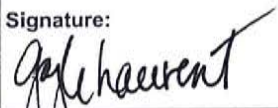
For Check-in, Maps & IAP

ID-NCF-000181

P1S2M8 (0117)

INCIDENT OBJECTIVES	1. Incident Name	2. Date Prepared	3. Time Prepared
	Post Fire	6/15/2025	1400
4. Operational Period			
Monday, June 16, 2025		DAY SHIFT 0600-2200	
Intent, Objectives			
<p><u>Commander's Intent</u></p> <p>Success is defined as prioritizing fire fighter safety, minimizing potential impacts/threats to human populations, private land, infrastructure and other identified values by effective risk management and enhanced coordination.</p> <p>Ensure that all incident actions reflect a commitment to aviation, responder and public safety utilizing the risk management process outlined in the IRPG, adherence to the 10 Standard Firefighting Orders, mitigation of the 18 Situations That Shout Watch Out and LCES. If you cannot mitigate a tactical hazard to an acceptable level of risk, do not implement the corresponding tactical action until such time as the risk can be satisfactorily mitigated before re-engaging. Ensure this Commander's Intent is clearly communicated and understood by all resources.</p> <p>Treat all Incident Management personnel, cooperators, contractors and the local public with dignity and respect, creating a "no tolerance" atmosphere for harassment, discrimination, alcohol, or federally prohibited substances.</p> <p><u>Operational Objectives</u></p> <ol style="list-style-type: none"> Execute a full suppression strategy utilizing direct, indirect, confine/ contain and mixed tactics to minimize impacts to values at risk and firefighter exposure both in the near and long term timeframe of the incident. Prevent or minimize fire impacts to these prioritized critical values: Highway 12 corridor, Weir Cr. trail and hot springs area, Forest Service infrastructure (bridges, campgrounds, kiosks, etc.), Ashpile Outfitter Camp, Western Pacific Timber lands, and natural resources (cultural/ heritage sites, aquatic species, etc.). Provide Initial Attack within the planning area. Consider operational strategies and tactics that minimize impacts to sensitive areas and anadromous fisheries. <p><u>Management Objectives</u></p> <ol style="list-style-type: none"> Provide timely and accurate dissemination of information to fire-adjacent residences and the jurisdictional agencies. Keep these entities informed of management goals, objectives, successes and challenges on the incident. Manage and/or mitigate impacts to the identified values at risk as prioritized by the jurisdictional agencies. Operations personnel should coordinate with appropriate READ(s) to document, and, if necessary, coordinate mitigation measures related to threatened and endangered species, cultural sites, and minimize introduction and spread of noxious/exotic weeds and aquatic species. Ensure costs related to incident management actions are commensurate with the values at risk. 			
8. ATTACHMENTS (X IF ATTACHED)			
<div style="display: flex; justify-content: space-between;"> <div> <input checked="" type="checkbox"/> ICS 203 <input checked="" type="checkbox"/> ICS 204 <input checked="" type="checkbox"/> ICS 205 <input checked="" type="checkbox"/> ICS 206 <input checked="" type="checkbox"/> ICS 220 </div> <div> <input checked="" type="checkbox"/> Weather Forecast/Fire Behavior Analysis <input checked="" type="checkbox"/> Safety Message <input checked="" type="checkbox"/> Demob Message <input checked="" type="checkbox"/> 8 Line – Medical Incident Report </div> </div>			
9. Prepared By (Planning Section Chief)		10. Approved By (Incident Commander)	
Julie Shea - PSCC		Shawn Borgen – ICCI (t)	
ICS 202			

ORGANIZATION ASSIGNMENT LIST (ICS 203)

1. Incident Name:		2. Operational Period: DAY 0600-2200	
POST		Date/Time From: 06/16/2025 0600 MON	Date/Time To: 06/16/2025 2200 MON
3. Incident Commander(s) and Command Staff:		LINE OPS KEVIN SMITH	
IC/UC	JOE SAMPSON SHAWN BORGEN (T)		
DEPUTY	RICK CONNELL	DIVISION/GROUP A	MIKE KING MATT KOSOVICH (T)
INFORMATION OFFICER	JENI GARCIN, KIM SMOLT, STEFANI SPENCER	DIVISION/GROUP D	SCOTT DRAKE KYLE ERRECART (T)
SAFETY OFFICER	LEROY HOLGUIN MIKE SMITH (T)	DIVISION/GROUP G	LOUIS FLEMING CALEB OLANDER (T)
4. Agency/Organization Representative(s):		DIVISION/GROUP Z	JASON MONROE JEFF ARMSTRONG (T)
Agency/Organization	Name		
NEZ PERCE-CLEARWATER NF	BRANDON KNAPTON RON TIPTON (T)	7b. Air Operations Branch:	
RESOURCE ADVISOR	JIM LUTES KATY BAUER (T)	AIR OPS BRANCH DIRECTOR	STEVE CROY
5. Planning Section:		AIR SUPPORT SUPERVISOR	JEFF POLACK JEFF QUICK
CHIEF	JULIE SHEA	HELICOPTER MGR	MARK VANDLIK (T)
RESOURCES UNIT	PATTY BATES	8. Finance/Administration Section:	
SITUATION UNIT	LAILA LIENESCH (VIRTUAL)	CHIEF	BIDDY SIMET; MANDIE WILLENBERG AMELIA VELASCO (T)
DEMOBILIZATION UNIT	GAYLE LAURENT	INCIDENT BUSINESS ADVISOR	SAVANHA PAREDES
DOCUMENTATION UNIT	SPENCER POLLOCK (VIRTUAL)	TIME UNIT	ANNA LOWELL
FIRE BEHAVIOR ANALYST	MIKE PAGOAGA	PROCUREMENT UNIT	TAMMY PETERSON STEW WILLIAMS (T)
GIS SPECIALIST	BRIAN GARDNER	COMP/CLAIMS UNIT	TORIE KOLLER JENNIFER HEBBELER (T)
TECHNOLOGY SUPPORT SPECIALIST	MARY SIMONIS, SUE ROSE	COST UNIT	CHELSEA MONKS
INCIDENT METEOROLOGIST	TRENT SMITH		
STRATEGIC OPERATION PLANNER	JUSTIN PAPPANI		
LONG TERM ANALYST	JON RIECK		
6. Logistics Section:			
CHIEF	PETER PAPPAS		
DEPUTY	BILL LAUER		
SUPPLY UNIT	DAVE COOPER		
FACILITIES UNIT	PAT NELSON		
GROUND SUPPORT UNIT	BRAD EMRICK		
COMMUNICATIONS UNIT	DALTON BLACK		
MEDICAL UNIT	ROSEMARY MYERS, RAY MINES SADE GALLOWAY (T)		
SECURITY UNIT	BILL HITT		
FOOD UNIT	JUSTIN TRODICK		
ORDERING MANAGER	DARCY WHEELER (VIRTUAL) LYNDA MURPHY		
7. Operations Section:			
PLANNING OPS	ASHLEY SITES JT GILMAN (T)		
9. Prepared By:		Signature:	
Name: GAYLE LAURENT	Position/Title: DMOB		
ICS 203	Date/Time: 06/15/2025 1450		
IAP Page			



Fire Weather Forecast



FORECAST NO: 03

PREDICTION FOR: Monday-Tuesday

SHIFT DATE: Monday 06/16/2025

TIME AND DATE ISSUED: 06/15/2025 1900 hrs

INCIDENT: Post Fire

UNIT: Clearwater NF

SIGNED: Trent Smith *Trent R. Smith*

Incident Meteorologist (IMET)

Discussion: A weak disturbance is expected to move through the region this afternoon which will kick off a few showers and potentially a thunderstorm. Temperatures will once again be slightly warmer with low humidity readings. The west winds are expected to gust up to 33 mph on the ridges. Tuesday appears to have less potential for storms but conditions will remain warm and dry.

WEATHER FORECAST FOR TODAY:

Sky/Weather: Mostly cloudy becoming partly cloudy in the afternoon. 30% chance of rain showers and 15% chance of thunderstorms in the afternoon.

Max Temperature: Bottom: 82-87; Top: 76-81

Min RH: 18-23 percent.

20 ft Winds:

Lower Valleys: Terrain driven 2-8 mph becoming west 8-13 mph gusts to 25 mph in the afternoon.

Mid-slopes and Ridges: Terrain driven 2-5 mph becoming west 10-15 mph gusts to 30 mph by early afternoon.

Transport Wind: W 11 mph.

Inversion: 500 ft lifting by 0700 PDT reaching 11000 ft MSL by 1400 PDT.

TONIGHT:

Sky/Weather: Partly cloudy. 20% chance of rain showers in the evening.

Min Temperature: 46-51.

Max RH: Bottom: 82-87 percent; Top: 61-68 percent.

20 ft Winds:

Valleys/Lower Slopes: West 5-10 mph becoming terrain driven 2-6 mph after sunset.

Ridges: West 8-13 mph becoming terrain driven 3-8 mph after midnight.

Inversion: Developing after 2100 near 700 ft.

TUESDAY:

Sky/Weather: Mostly sunny becoming partly cloudy. 5% chance of rain showers in the afternoon.

Max Temperature: Bottom: 79-84; Top: 72-77.

Min RH: 23-28 percent.

20 ft Winds:

Lower Valleys: Terrain driven 2-8 mph becoming west 8-13 mph gusts to 25 in the afternoon.

Mid-slopes and Ridges: Terrain driven 3-8 mph becoming west 10-15 mph gusts to 33 mph in the afternoon.

Transport Wind: W 17 mph. **Inversion:** Increasing to 10000 ft MSL by 1500 PDT.

Weather observations can be texted to 406-360-6330 or emailed to trent.smith@noaa.gov

FIRE BEHAVIOR FORECAST

FORECAST NUMBER: 2	TYPE OF FIRE: Wildland Fire
FIRE NAME: POST	OPERATIONAL PERIOD: Monday, 06/16/2025
DATE ISSUED: June 15, 2025	TIME ISSUED: 1900
UNIT: ID-NCF	SIGNED: Mike Pagoaga - FBAN

WEATHER

Temp: 82-87 **RH:** 18-23%
Wind: Terrain driven shifting to west and increasing 10-15,
gusts up to 30

*Local Weather Thresholds that shout **WATCH OUT**
Temperatures above 85°, Relative Humidity below 20%,
20' winds above 5 mph*

FUELS

Predominant fuels are traditional high load, timber understory (TU5), and moderate load, timber understory (TU2) in continuous mixed conifer. Fuels Moistures at critical levels with 100-hour and 1000-hour fuel moistures near 14%. ERC values approaching the 90th percentile.

Be aware of profuse spotting potential of sub-alpine fir and lichen growing thick on limbs

FIRE BEHAVIOR

General Fire Behavior:

Heavy drought stressed fuels will be the primary driver of fire behavior. Minimal to moderate fire behavior expected as heavy dead fuels consume. High potential for rollout to ignite fuels below.

*Fine Dead Fuel Moisture: 6%
Probability of Ignition 60%, Short range spotting potential*

Specific Fire Behavior:

DIV A: The fire will continue to work uphill toward H-5 in available dead fuels. Exposed ridges will likely see the potential for snags to fall with increased winds.

DIV D: Minimal fire behavior expected as this area is relatively sheltered. Suppression efforts on the spot have been successful in limiting fire behavior.

DIV G: This division has the greatest potential for fire spread due to alignment with west winds and Hwy 12 corridor. Watch for increased torching and spotting potential when winds align with terrain and fuels are at their driest after 1400.

DIV Z: This division is the lowest in elevation and see the hottest fire weather conditions. Snags in this area have potential to fall due to being fire weakened. Snags can be both burned and unburned.

Safety

Another day of hotter and drier conditions
Expect fire to be more active earlier than previous days



Safety Message

Planning for a Medical Emergency

Being Prepared:

- Who are your medical personnel and where are they located?
- Are your medical personnel EMT's or Paramedics?
- How will you contact them? Can you reach them on TAC or must you use Command?
- How long will it take them to get to you?
- How/when will you communicate with DIVS and other adjacent resources?
- When was the last time YOU practiced being the "IC" of an Incident Within an Incident (IWI)?

Ground Based Medical Transport:

- Do you have an ambulance on or near your division that can reach you?
- Who will transport your injured crew member?
- Will you need to carry your injured crew member to an area that is vehicle accessible? How long will that take? Will you need help? Will you need special equipment?
- Are other crews close by to help you?

Aviation Based Medical Transport:

- Where are the closest helispots to the injury location?
- How long will it take to get your injured crew member to a helispot?
- How long will it take to get a medivac ship from helibase to your closest helispot?
- Is the injury site in an area that will necessitate a hoist/shorthaul extraction operation?
- How long will it take to get a hoist/shorthaul ship to the injury site?
- Do you understand the difference between Hoist operations and Short Haul?
- Is the Army National Guard providing medical aircraft? Will you be able to communicate with the National Guard Aircraft?

Team Safety Officers: Leroy Holguin and Mike Smith (t)

Safety is your Responsibility!

Northern Rockies Complex Incident Management Team 5

Division/Group Assignment List (ICS 204 WF)

Controlled Unclassified Information//Basic

1. Incident Name:				3.			
POST				Branch:		Division/Group:	
2. Operational Period: DAY 0600-2200						A	
Date/Time From: 06/16/2025 0600 MON		Date/Time To: 06/16/2025 2200 MON					
4. Operations Personnel							
OPERATIONS CHIEF PLANNING		ASHLEY SITES JT GILMAN (T)		OPERATIONS CHIEF LINE		KEVIN SMITH	
DIVISION/GROUP SUPERVISOR		MIKE KING MATT KOSOVICH (T)					
5. Resources Assigned this Period							
Strike Team / Task Force / Resource Designator		LWD	Leader		Number Persons	Drop Off PT./Time	Pick Up PT./Time
C-6 CEDAR CITY IHC		06/25	JOHN HUNT; RORY CRIST (T)		22		
C-7 FLATHEAD IHC		06/23	MATT DELANY		23		
O-41 REMS KOOTENAI COUNTY FIRE & RESCUE		06/29	BRYON SMITH		4		
6. Control Operations/Work Assignments: Task: Implement direct tactics from H1 to H5 Purpose: To protect Highway 12 corridor, Weir Creek, and Ashpile Outfitter Camp End state: Fire progression to west is halted.							
7. Special Instructions: <i>Evaluate all areas for snags and watch out for green trees falling. Utilize mixed handline/cold trailing tactics where appropriate.</i>							
8. Division/Group Communication Summary							
Function	Channel	RX Frequency N/W	RX Tone/NAC	TX Frequency N/W	TX Tone/NAC	Mode	
COMMAND	7	170.4250	131.8	168.0750	131.8	A	
TACTICAL	1	166.7250	131.8	166.7250	131.8	A	
AIR TO GROUND	13	166.6125		166.6125		A	
9. Prepared By (Resource Unit Leader)			Approved By (Planning Section Chief)			Date	Time
PATTY BATES			JULIE SHEA			06/15/2025	2100

Division/Group Assignment List (ICS 204 WF)

Controlled Unclassified Information//Basic

1. Incident Name:				3.			
POST				Branch:		Division/Group: <div style="text-align: center; font-weight: bold;">D</div>	
2. Operational Period: DAY 0600-2200							
Date/Time From: 06/16/2025 0600 MON		Date/Time To: 06/16/2025 2200 MON					
4. Operations Personnel							
OPERATIONS CHIEF PLANNING		ASHLEY SITES JT GILMAN (T)		OPERATIONS CHIEF LINE		KEVIN SMITH	
DIVISION/GROUP SUPERVISOR		SCOTT DRAKE KYLE ERRECART (T)					
5. Resources Assigned this Period							
Strike Team / Task Force / Resource Designator	LWD	Leader	Number Persons	Drop Off PT./Time	Pick Up PT./Time		
C-1 TRAPPER CREEK HC2IA	06/24	NAT SUPOLA	22				
C-2 GRAYBACK FORESTRY, HC2IA	06/24	MATT DOUGHERTY	20				
C-3 PALOUSE CREW HC2IA	06/24	CHAD BORG	19				
C-5 RUBY MOUNTAIN IHC	06/26	JUSTIN ZABALA	21				
O-8 TFLD JORDAN FRANCOM			1				
O-10.64 TFLD NICK CLARK (T)	06/24		1				
O-10.6 SOFC ADAM CARR	06/18		1				
6. Control Operations/Work Assignments:							
<p>Task: Continue implementing direct handline and snagging operations around Delta Spot Fire, prep contingency lines where applicable.</p> <p>Purpose: Minimize fire's spread to the east to protect Highway 12 corridor and private Western Pacific Timberland assets. Provide contingency holding options to be utilized if current primary plan is unsuccessful.</p> <p>End state: No additional fire spread from spot fire</p>							
7. Special Instructions:							
Meeting location for incoming resources is DP 10							
8. Division/Group Communication Summary							
Function	Channel	RX Frequency N/W	RX Tone/NAC	TX Frequency N/W	TX Tone/NAC	Mode	
COMMAND	7	170.4250	131.8	168.0750	131.8	A	
TACTICAL	2	166.7750	131.8	166.7750	131.8	A	
AIR TO GROUND	13	166.6125		166.6125		A	
9. Prepared By (Resource Unit Leader)		Approved By (Planning Section Chief)			Date	Time	
PATTY BATES		JULIE SHEA			06/15/2025	2100	

Division/Group Assignment List (ICS 204 WF)

Controlled Unclassified Information//Basic

1. Incident Name:				3.			
POST				Branch:		Division/Group: G	
2. Operational Period: DAY 0600-2200							
Date/Time From: 06/16/2025 0600 MON		Date/Time To: 06/16/2025 2200 MON					
4. Operations Personnel							
OPERATIONS CHIEF PLANNING		ASHLEY SITES JT GILMAN (T)		OPERATIONS CHIEF LINE		KEVIN SMITH	
DIVISION/GROUP SUPERVISOR		LOUIS FLEMING CALEB OLANDER (T)					
5. Resources Assigned this Period							
Strike Team / Task Force / Resource Designator		LWD	Leader	Number Persons	Drop Off PT./Time	Pick Up PT./Time	
C-4 VALE IHC		06/25	GLEN HEITZ	24			
O-?? TFLD RYAN WILLIAMS		06/29		1			
O-40 TFLD (T) JONATHON FUENTES		06/29		1			
O-29 FMOD COURVILLE LOGGING		06/28	MATT COURVILLE	2			
O-25 EMPF BEST PRACTICE MEDICINE		06/28	SAM HILL	1			
E-3 AMBO1 BEST PRACTICE MEDICINE		06/25	MISTY BAUER; ETHAN BIEDERMANN	2			
O-31 WFM1 SELWAY							
6. Control Operations/Work Assignments:							
<p>Task: Find and contain any spots beyond northern fire perimeter. Mitigate snags and begin direct handline construction/cold trailing along west edge of DIV G.</p> <p>Purpose: Contain fire to current footprint to protect Highway 12 corridor and Western Pacific Timberland holdings.</p> <p>End state: Keep fire north of Highway 12 and west of Post Office Creek. Minimize impacts to the Highway 12 corridor.</p>							
7. Special Instructions:							
Evaluate all areas for snags and watch out for green trees falling. Utilize mixed handline/cold trailing tactics where appropriate.							
8. Division/Group Communication Summary							
Function	Channel	RX Frequency N/W	RX Tone/NAC	TX Frequency N/W	TX Tone/NAC	Mode	
COMMAND	7	170.4250	131.8	168.0750	131.8	A	
TACTICAL	3	168.2500	131.8	168.2500	131.8	A	
AIR TO GROUND	13	166.6125		166.6125		A	
9. Prepared By (Resource Unit Leader)			Approved By (Planning Section Chief)		Date		Time
PATTY BATES			JULIE SHEA		06/15/2025		2100

Division/Group Assignment List (ICS 204 WF)

Controlled Unclassified Information//Basic

1. Incident Name:				3.			
POST				Branch:		Division/Group: <div style="text-align: center; font-weight: bold; font-size: 1.2em;">Z</div>	
2. Operational Period: DAY 0600-2200							
Date/Time From: 06/16/2025 0600 MON		Date/Time To: 06/16/2025 2200 MON					
4. Operations Personnel							
OPERATIONS CHIEF PLANNING		ASHLEY SITES JT GILMAN (T)		OPERATIONS CHIEF LINE		KEVIN SMITH	
DIVISION/GROUP SUPERVISOR		JASON MONROE JEFF ARMSTRONG (T)					
5. Resources Assigned this Period							
Strike Team / Task Force / Resource Designator	LWD	Leader	Number Persons	Drop Off PT./Time	Pick Up PT./Time		
C-10 HC2IA DILLON INTERAGENCY CREW #1	06/23	BRYCHAN DEMONEY- GROSS	19				
E-12 FNF - ENGINE 682	06/28	CLINTON DEAN	7				
O-28 FMOD - FALLER MODULE - ALASKA CUTTERS	06/27	RONDA LECLAIR; JAMES LECLAIR	2				
O-30 FMOD MILLER CREEK REFORESTATION	06/27	NIC JONES; JORDAN LAMBER	2				
O-24 EMPF BEST PRACTICE MEDICINE LLC	06/28	TREVOR LEARY	1				
E-16 AMBO 2 AERIE BACKCOUNTRY A03397	06/28	TRENTON HARPER	2				
O-10.72 SOFR KEVIN PFISTER			1				
6. Control Operations/Work Assignments:							
<p>Task: Implement direct line within division where appropriate.</p> <p>Purpose: Minimize fire spread to the South to protect Highway 12 corridor</p> <p>End state: Fire perimeter is secured and Highway 12 corridor is not impacted.</p>							
7. Special Instructions:							
<p><i>Utilize mixed handline/cold trailing tactics where appropriate.</i></p>							
8. Division/Group Communication Summary							
Function	Channel	RX Frequency N/W	RX Tone/NAC	TX Frequency N/W	TX Tone/NAC	Mode	
COMMAND	7	170.4250	131.8	168.0750	131.8	A	
TACTICAL	4	168.6000	131.8	168.6000	131.8	A	
AIR TO GROUND	13	166.6125		166.6125		A	
9. Prepared By (Resource Unit Leader)		Approved By (Planning Section Chief)			Date	Time	
PATTY BATES		JULIE SHEA			06/15/2025	2100	

INCIDENT RADIO COMMUNICATIONS PLAN I-205

1. Incident Name: POST
2. Date Time Prepared: 06/15/25 1000
3. Operational Period Date/Time: 06/16/2025 0600 - 2200

4. Basic Radio Channel Utilization											
CH #	Function	Channel Name	Assignment	RX Frequency	RX Tone/NAC	N/W	TX Frequency	TX Tone/NAC	N/W	Mode	Remarks
1	TACTICAL	TAC 1	DIV A	166.7250	131.8	N	166.7250	131.8	N	A	
2	TACTICAL	TAC 2	DIV D	166.7750	131.8	N	166.7750	131.8	N	A	
3	TACTICAL	TAC 3	DIV G	168.2500	131.8	N	168.2500	131.8	N	A	
4	TACTICAL	TAC 4	DIV Z	168.6000	131.8	N	168.6000	131.8	N	A	
5	TACTICAL	TAC 5	UNASSIGNED	168.2000	131.8	N	168.2000	131.8	N	A	
6	TACTICAL	TAC 6	I/A	168.0500	131.8	N	168.0500	131.8	N	A	
7	COMMAND	CMD 7	ALL DIV	170.4250	131.8	N	168.0750	131.8	N	A	NIFC C3
8	COMMAND	CMD 8	ICP	170.4125	131.8	N	165.9625	131.8	N	A	NIFC C10
9		OPEN	FUTURE			N		123.0	N	A	
10	REPEATER	CASTLE BUTTE	Local Repeater	172.2250	0.0	N	165.7000	156.7	N	A	LOCAL REPEATER
11	REPEATER	BEAR MTN	Local Repeater	171.5750	0.0	N	166.2625	156.7	N	A	LOCAL REPEATER
12	REPEATER	ROCKY PT	Local Repeater	171.5750	0.0	N	166.2625	162.2	N	A	LOCAL REPEATER
13	AIR TO GROUND	A/G PRI	AIR TO GROUND	166.6125	0.0	N	166.6125	0.0	N	A	
14	AIR TO GROUND	A/G SEC	AIR TO GROUND	168.4000	0.0	N	168.4000	0.0	N	A	
15	MEDIVAC	VMED 28	MEDIVAC	155.3400	0.0	N	155.3400	156.7	N	A	NON-AGENCY EMERGENCY AIRCRAFT
16	AIR GUARD	AIR GUARD	ALL DIV	168.6250	0.0	N	168.6250	110.9	N	A	AIR GUARD
5.Special Instructions: POST61425 COMMS PHONE #										Signature:	
6. Prepared by : Communication Unit Leader										Name: Dalton Black	

DEMOB INSTRUCTIONS

FOR EMERGENCY OR URGENT DEMOBS CONTACT YOUR SUPERVISOR FIRST AND THEN CONTACT THE DEMOB UNIT DIRECTLY AT 307.752.9362

For flights, please contact 2024.POST.DEMOB@FIRENET.GOV or call 307.752.9362 at least 72 hours in advance, if possible.

After being notified by your supervisor of your tentative release date:

Step 1. Return all supplies, radios, etc. that were checked out.

Step 2. Return pool NERV rentals, non-Viper vehicles receive inspections.

Step 2. All vehicles that have been on the fire line **MUST** go through weed wash.

Step 3. After you have closed out with Finance, come to Demob to finalize travel.

Any questions about the demob process, call 307.752.9362

or email 2025.post.demob@firenet.gov

*******FINANCE MESSAGE*******

Finance has a new phone number.

You can reach us at:

208-867-9570

It has no voice mail established.

If you can't reach us, please email us at:

Email address

2025.post.finance@firenet.gov

*****Finance procedure AFTER check in*****

Please send all required documents, which is broken down by resource type below, electronically to email address listed above.

DOCUMENTATION NEEDED:

OVERHEAD-FEDERAL:

CTR (*daily*)

OVERHEAD-AD:

Casual Hire Form w ECI# (*once*)

CTR (*daily*)

FEDERAL ENGINES & CREWS:

Manifest (*once*)

CTR (*daily*)

CREWS – AD:

Manifest w/ AD Rates & ECI# (*once*)

CTR (*daily*)

CONTRACTORS:

Vehicle Pre/Post-Insp sheet,

Agreement to include UEI# (*once*)

Signed Shift Ticket (*daily*)

COOPERATORS:

Agreement (*once*)

CTR and/or Shift Ticket (*daily*)

***SEND ALL CTRS AND SHIFT TICKETS TO FINANCE AT LEAST EVERY OTHER DAY AND NOTATE THE FIRE YOU ARE WORKING ON.**

Name & Contact # for Person Placing Order:

ORDER # _____

Line Order

Date & Time Order Was Placed		Location and Time for Delivery (Div/LZ/DP/Lat Long)		Mode of Delivery (Ex: Driven/Helo/DIVS to pickup)	
<input type="text"/>		<input type="text"/>		<input type="text"/>	
<input type="text"/>		<input type="text"/>		<input type="text"/>	
#	Item	Quantity	#	Item	Quantity
1	Meals Breakfast		25	Drip Torch Mix 5gal Mix= 3 1/2gal Diesel : 1 gal Gas	
2	Meals Lunch		26	Line Spike Hygiene Kit	
3	Meals Dinner		27	Backpack Pump	
4	Meals MRE's/case		28	Folding Tank - Size: <input type="text"/>	
5	Water 5 Gal Cubees		29	Pumpkin - Size: <input type="text"/>	
6	Gatorade Case		30	Hose 1 1/2"	
7	Batteries AA Flat		31	Hose 1"	
8	Batteries Specify Type: <input type="text"/>		32	Hose 3/4"	
9	Flagging Rolls		33	Reducer 1 1/2" X 1"	
10	Tarps/Plastic		34	Reducer 1" X 3/4"	
11	Parachute Cord		35	Gated Wye 1 1/2"	
12	Garbage Bags Box		36	Gated Wye 1"	
13	20 Person First Aid Kit		37	Gated Wye 3/4"	
14	Fuel (raw) Diesel 5 Gals		38	Shut Off Valve 3/4"	
15	Fuel (raw) Unleaded 5 Gals		39	In-Line Tee 1 1/2" X 1"	
16	Bar Oil 6 Pack		40	Nozzle 1 1/2" KK	
17	2-cycle oil/pumps Quarts		41	Nozzle 1" Forestry	
18	2-cycle oil/saws		42	Nozzle 3/4" Garden	
19	Tool Shovel		43	Chainsaw Kit	
20	Tool Pulaski		44	Mark 3 Pump w/ Kit (No Fuel) Control# _____	
21	Tool Combi		45	Lightweight Pump w/ Kit (No Fuel) Control# _____	
22	Tool Specify Type: <input type="text"/>				
23	Fusee Case		46	Sprinkler Kit	
24	Drip Torch		47	MISC	
Order Received in Supply by (name):			Time:		
<input type="text"/>			<input type="text"/>		
Order Received in Transportation by (name):			Time:		
<input type="text"/>			<input type="text"/>		
Order Received in Helibase by(name):			Time:		
<input type="text"/>			<input type="text"/>		
Order Shipped to Line Unit by (name):			Time:		
<input type="text"/>			<input type="text"/>		

Clear / Reset

Print

Save &/or Submit



Northern Rockies Chainsaw Parts Order Form

Please see the back page for part order numbers and items requiring an approved Property Loss and Damage form.

Name:	Gen. Msg #:
Resource #:	Request Date:
Contact #:	Need by Date/Time:
TO BE FILLED BY: (circle one): <input type="checkbox"/> Buying Team	<input type="checkbox"/> Home Unit <input type="checkbox"/> Cache

Chainsaw Information

Make (circle one or fill in):	<input type="checkbox"/> Stihl	<input type="checkbox"/> Husqvarna	<input type="checkbox"/> Other:				
Model:							
Serial #							
Bar Length (circle one):	<input type="checkbox"/> 20"	<input type="checkbox"/> 24"	<input type="checkbox"/> 28"	<input type="checkbox"/> 30"	<input type="checkbox"/> 32"	<input type="checkbox"/> 36"	<input type="checkbox"/> Other:

Request:

Part Name and Number	Quantity	Part Name and Number	Quantity

For Sprocket & Chain Orders (circle one or fill in):

# of Drivers:			
Pitch (*):	<input type="checkbox"/> 3/8"	<input type="checkbox"/> .325"	<input type="checkbox"/> Other:
Gauge:	<input type="checkbox"/> .50	<input type="checkbox"/> .063	<input type="checkbox"/> Other:
Tooth Layout:	<input type="checkbox"/> Full	<input type="checkbox"/> Semi-Skip	<input type="checkbox"/> Full Skip
Tooth Cut:	<input type="checkbox"/> Chisel	<input type="checkbox"/> Semi-Chisel	<input type="checkbox"/> Other:
# of Sprocket Teeth:			

☐ Concurrence (Line Supervisor i.e. DIVS): _____

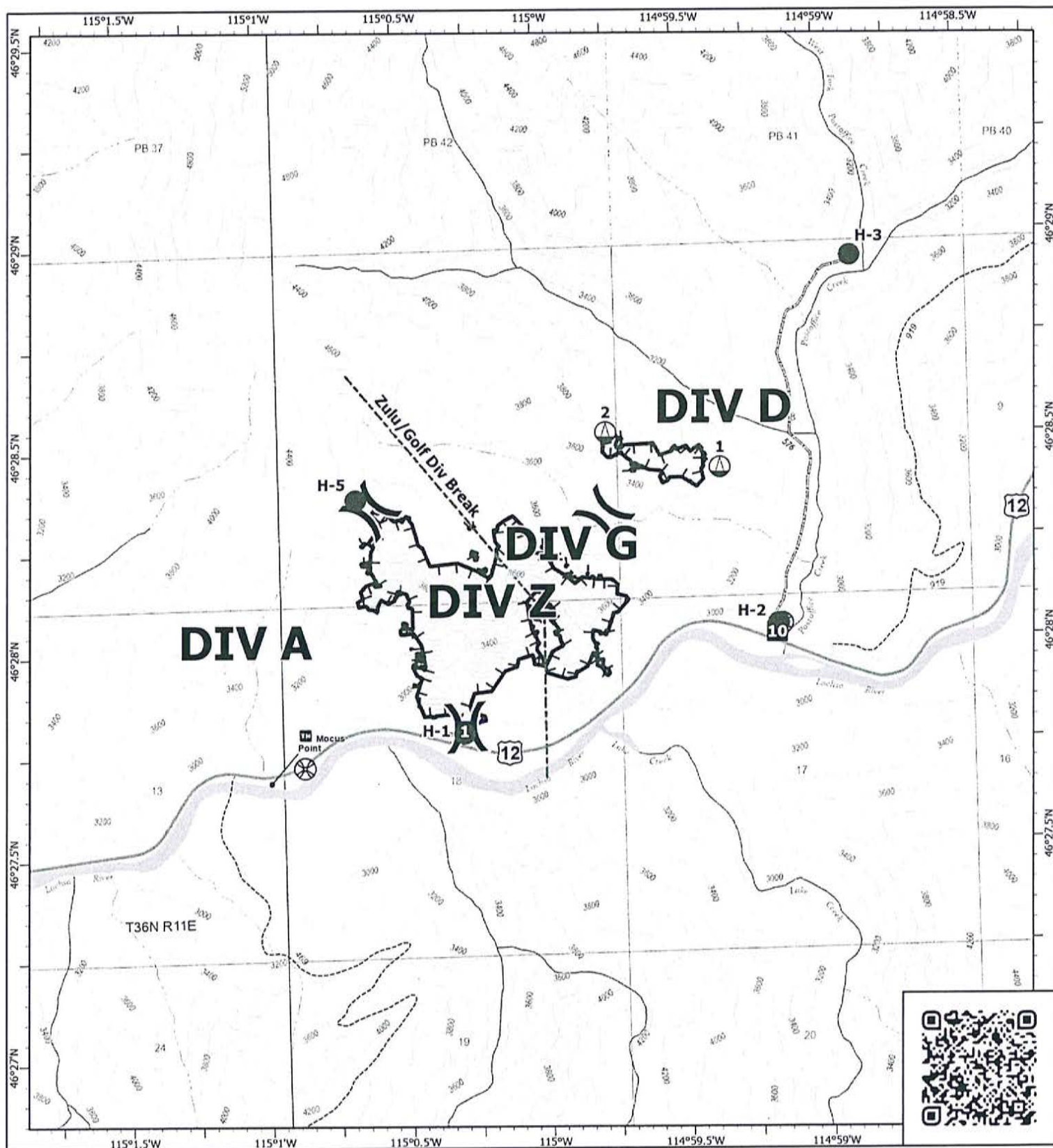
☐ Supply Unit Leader has checked that the items ordered do not need an approved Property Loss & Damage Form, or that the approval is attached. (Supply Unit Leader checks box and initials here: _____).

First source of supply is Cache, shaded blocks indicate items available thru Northern Rockies Cache. Items requiring an approved Property Loss and Damage form are in a separate list at the bottom.											
PART	034/341	360/MS360	MS361	MS362	038/381	044/MS440	MS441	460/MS461	MS462	0640/650	MS880
Spark Plug (NFESH 000344)	Bosch WSR6F NGK BPMR7A Champion RC16Y	Bosch WSR6F NGK BPMR7A Champion RC16Y	Bosch WSR6F NGK BPMR7A Champion RC16Y	Bosch WSR6F NGK BPMR7A Champion RC16Y	Bosch WSR6F NGK BPMR7A Champion RC16Y	Bosch WSR6F NGK BPMR7A Champion RC16Y	Bosch WSR6F NGK BPMR7A Champion RC16Y	Bosch WSR6F NGK BPMR7A Champion RC16Y	Bosch WSR6F NGK BPMR7A Champion RC16Y	Bosch WSR6F NGK BPMR7A Champion RC16Y	Bosch WSR6F NGK BPMR7A Champion RC16Y
Needle Cage Bearing (NFESH 066565)	9512-933-2380	9512-933-2380	9512-933-2380	9512-933-2380	9512-933-3150	9512-933-2380	9512-933-2380	9512-933-2380	9512-933-2380	9512-933-2382	9512-933-3170
Retaining Washer for Rim Sprocket	0000-958-1022	0000-958-1022	0000-958-1032	0000-958-1032	0000-958-1231	0000-958-1032	0000-958-1032	0000-958-1032	0000-958-1032	0000-958-1032	0000-958-1236
E Clip (NFESH 066517)	9460-624-0801	9460-624-0801	9460-624-0801	9460-624-0801	9460-624-1001	9460-624-0801	9460-624-0801	9460-624-0801	9460-624-0801	9460-624-0801	9460-624-1001
Fuel Filter	0000-350-3504	0000-350-3504	0000-350-3504	0000-350-3504	0000-350-3504	0000-350-3504	0000-350-3504	0000-350-3504	0000-350-3518	0000-350-3500	0000-350-3504
Air Filter - HD (NFESH 066756)	1125-120-1626	1125-120-1612	1135-120-1600	1140-140-4401	1119-120-1611	0000-140-4402	0000-120-1654	0000-120-1654	1142-140-4402	0000-140-4402	0000-140-4402
Pre Filter - OEM	N/A	N/A	N/A	N/A	1119-120-1500	0000-141-0300	0000-141-0300	0000-141-0300	N/A	0000-141-0300	0000-141-0300
Bar Nut (NFESH 06661)	0000-955-0801	0000-955-0801	0000-955-0801	0000-955-0801	0000-955-0801	0000-955-0801	0000-955-0801	0000-955-0801	0000-955-0803	0000-955-0801	0000-955-0903
Inner Slide Plate	1122-664-1000	1122-664-1000	1122-664-1000	1122-664-1000	1119-664-1000	1128-664-1001	1138-664-1000	1128-664-1001	1128-664-1001	1128-664-1001	1124-664-1001
STIHL RAPID - Super (RS)											
Chain 3/8" PITCH - .050" GA - DR											
20" - 72 DR	3623-005-0072	3623-005-0072	3623-005-0072	3623-005-0072	3623-005-0072	3623-005-0072	3623-005-0072	3623-005-0072	3623-005-0072	3623-005-0072	3623-005-0072
25" - 84 DR (NFESH 006500)	3623-005-0084	3623-005-0084	3623-005-0084	3623-005-0084	3623-005-0084	3623-005-0084	3623-005-0084	3623-005-0084	3623-005-0084	3623-005-0084	3623-005-0084
28" - 91 DR	3623-005-0091	3623-005-0091	3623-005-0091	3623-005-0091	3623-005-0091	3623-005-0091	3623-005-0091	3623-005-0091	3623-005-0091	3623-005-0091	3623-005-0091
32" - 105 DR	N/A	N/A	N/A	N/A	N/A	3623-005-0105	3623-005-0105	3623-005-0105	3623-005-0105	3623-005-0105	3623-005-0105
STIHL RAPID - Super - Full Skip (RSF)											
Chain 3/8" PITCH - .050" GA - DR											
20" - 72 DR	N/A	3676-005-0072	3676-005-0072	3676-005-0072	3676-005-0072	3676-005-0072	3676-005-0072	3676-005-0072	3676-005-0072	3676-005-0072	3676-005-0072
25" - 84 DR	3676-005-0084	3676-005-0084	3676-005-0084	3676-005-0084	3676-005-0084	3676-005-0084	3676-005-0084	3676-005-0084	3676-005-0084	3676-005-0084	3676-005-0084
28" - 91 DR	3676-005-0091	3676-005-0091	3676-005-0091	3676-005-0091	3676-005-0091	3676-005-0091	3676-005-0091	3676-005-0091	3676-005-0091	3676-005-0091	3676-005-0091
32" - 105 DR	N/A	N/A	N/A	N/A	N/A	3676-005-0105	3676-005-0105	3676-005-0105	3676-005-0105	3676-005-0105	3676-005-0105
Bar oil: Quantity - Gallon	NFES # 1880										
Bar oil: Quantity - Quart	NFES # 1869										
2 Cycle Oil: Quantity - Quart	NFES # 0341										

The following parts require an approved Property Loss & Damage form prior to ordering:

Guide Bars - 3/8" - .050" GA (STIHL ROLLOMATIC - ES)											
20"	3003-000-8822	3003-000-8822	3003-000-8822	3003-000-8822	3003-000-8822	3003-000-8822	3003-000-8822	3003-000-8822	3003-000-8822	3003-000-8822	3003-000-8822
25" (NFESH 066584)	N/A	3003-000-8830	3003-000-8830	3003-000-8830	3003-000-8830	3003-000-8830	3003-000-8830	3003-000-8830	3003-000-8830	3003-000-8830	3003-000-8830
28"	N/A	N/A	N/A	N/A	N/A	3003-000-8838	3003-000-8838	3003-000-8838	3003-000-8838	3003-000-8838	3003-000-8838
32"	N/A	N/A	N/A	N/A	N/A	3003-000-8846	3003-000-8846	3003-000-8846	3003-000-8846	3003-000-8846	3003-000-8846
Rim Sprocket Kit 3/8 - 7T	1125-007-1040	1125-007-1023	1125-007-1000	1135-007-1002	1119-007-1003	1128-007-1000	1128-007-1000	1128-007-1017	1128-007-1000	1122-007-1000	N/A
Clutch Drum	Order Sprocket Kit	Order Sprocket Kit	Order Sprocket Kit	Order Sprocket Kit	Order Sprocket Kit	Order Sprocket Kit	Order Sprocket Kit	Order Sprocket Kit	Order Sprocket Kit	Order Sprocket Kit	Order Sprocket Kit
Rim Sprocket 3/8 7T (NFESH 066652)	0000-642-1231	0000-642-1023	0000-642-1223	0000-642-1223	0000-642-1223	0000-642-1223	0000-642-1223	0000-642-1223	0000-642-1223	0000-642-1223	N/A
Rim sprocket kit 3/8 - 8T	N/A	N/A	1128-007-1001	1128-007-1001	N/A	1128-007-1001	1128-007-1001	1128-007-1001	1122-007-1001	1122-007-1001	1124-007-1025
Clutch Drum	Order Sprocket Kit	Order Sprocket Kit	Order Sprocket Kit	Order Sprocket Kit	Order Sprocket Kit	Order Sprocket Kit	Order Sprocket Kit	Order Sprocket Kit	Order Sprocket Kit	Order Sprocket Kit	Order Sprocket Kit
Rim Sprocket 3/8 - 8T	N/A	0000-642-1216	0000-642-1216	0000-642-1216	0000-642-1216	0000-642-1216	0000-642-1216	0000-642-1216	0000-642-1216	0000-642-1216	0000-642-1216
Clutch	1127-160-2050	1125-160-2005	1128-160-2004	1138-160-2010	1119-160-2000	1128-160-2001	1138-160-2010	1128-160-2004	1142-160-2000	1122-160-2002	1124-160-2005
Chain Adjuster Kit	1125-007-1036	1125-007-1021	1125-007-1021	1125-007-1021	1118-664-1600	1125-007-1021	1125-007-1021	1125-007-1021	1125-007-1021	1125-007-1021	1124-007-1008
Bump Strip	1121-648-6610	1121-648-6610	1121-648-6610	1121-648-6610	1121-648-6610	1121-648-6610	1121-648-6610	1121-648-6610	1121-648-6610	1121-648-6610	1121-648-6610
Starter Rope W/handle	1128-190-3400	1128-190-3400	1128-190-3400	1128-190-3400	1128-190-3400	1128-190-3400	1128-190-3400	1128-190-3400	1128-190-3400	1128-190-3400	1128-190-3400
Worm Gear (Oiler)	1125-640-7110	1125-640-7110	1128-640-7112	1128-640-7112	1119-642-1501	1128-640-7112	1128-640-7112	1128-640-7112	1122-640-7105	1122-640-7105	1124-640-7512
Manifold Boot	1125-141-2200	1125-141-2200	1135-141-2200	1140-140-2503	1119-140-2500	1128-141-2204	1138-140-2508	1128-141-2204	1142-141-2200	1122-141-2201	1124-141-2202

UNIT LOG		1. Incident Name	2. Date Prepared	3. Time Prepared
4. Unit Name/Designators		5. Unit Leader (Name and Position)		6. Operational Period
7. Personnel Roster Assigned				
Name		ICS Position		Home Base
8. Activity Log				
Time		Major Events		
9. Prepared by (Name and Position)				



IAP

Post

IDNCF-000181

06/16/2025 Day

151 acres at 06/14/2025 2256hrs

0 0.25 0.5

Miles



1:24,000 | RIST | 6/15/2025 2035

Acres from IR

North American 1983 Datum, Lat/Lon Grid

- Helispot
- Sling Site
- UAS Launch and Recovery
- Division Break

- Drop Point
- Other
- Uncontained Fire Edge
- Wildfire Perimeter
- Scenic Byway
- Primary Highway

- Road, Not Maintained for Passenger Car
- FS Closed Road
- Trail
- Administrative FS Boundary

MEDICAL PLAN (ICS 206)

1. Incident Name: Post Fire		2. Operational Period: Date From: 06/16/25 Time From: 0600		Date To: 06/16/25 Time To: 2200			
3. Air Ambulances:							
Name	Location	Contact Number(s)/Frequency	Paramedics on Site?				
Life Flight Network	MT, ID	911	<input checked="" type="checkbox"/> Yes <input type="checkbox"/> No				
Two Bear Air	Kalispell, MT	911	<input type="checkbox"/> Yes <input checked="" type="checkbox"/> No				
			<input type="checkbox"/> Yes <input type="checkbox"/> No				
			<input type="checkbox"/> Yes <input type="checkbox"/> No				
			<input type="checkbox"/> Yes <input type="checkbox"/> No				
			<input type="checkbox"/> Yes <input type="checkbox"/> No				
4. Transportation (indicate air or ground):							
Ambulance Service	Location	Contact Number(s)/Frequency	Level of Service				
MESI	Missoula, MT	911	<input checked="" type="checkbox"/> ALS <input type="checkbox"/> BLS				
Kooskia	Kooskia, ID	911	<input type="checkbox"/> ALS <input checked="" type="checkbox"/> BLS				
			<input type="checkbox"/> ALS <input type="checkbox"/> BLS				
			<input type="checkbox"/> ALS <input type="checkbox"/> BLS				
5. Hospitals:							
Hospital Name	Address, Latitude & Longitude if Helipad	Contact Number(s)/Frequency	Travel Time		Trauma Center	Burn Center	Helipad
			Air	Ground			
ST. Patrick Missoula, MT	LAT- N 46.52.31 LONG- W 113.59.58	911	20 min	1.5 hrs	<input checked="" type="checkbox"/> Yes Level: 2	<input type="checkbox"/> Yes <input checked="" type="checkbox"/> No	<input checked="" type="checkbox"/> Yes <input type="checkbox"/> No
Syringa General	LAT- N45.56.30 LONG- W116.07.80	911		2 hrs	<input type="checkbox"/> Yes Level: _____	<input type="checkbox"/> Yes <input checked="" type="checkbox"/> No	<input type="checkbox"/> Yes <input checked="" type="checkbox"/> No
					<input type="checkbox"/> Yes Level: _____	<input type="checkbox"/> Yes <input type="checkbox"/> No	<input type="checkbox"/> Yes <input type="checkbox"/> No
					<input type="checkbox"/> Yes Level: _____	<input type="checkbox"/> Yes <input type="checkbox"/> No	<input type="checkbox"/> Yes <input type="checkbox"/> No
					<input type="checkbox"/> Yes Level: _____	<input type="checkbox"/> Yes <input type="checkbox"/> No	<input type="checkbox"/> Yes <input type="checkbox"/> No
6. Special Medical Emergency Procedures: Due to remote location of incident, severe/critical patients will be transported from fire by helicopter, if possible. Approved helispot at ICP, N 46.19.81/W 114.42.53 Please review and follow 8 Line Report							
<input checked="" type="checkbox"/> Check box if aviation assets are utilized for rescue. If assets are used, coordinate with Air Operations.							
7. Prepared by (Medical Unit Leader): Name: /S/ Sadie Galloway MEDLt Signature: _____							
8. Approved by (Safety Officer): Name: /S/ Leroy Holguin SOFC Signature: _____							
ICS 206		IAP Page _____		Date/Time: 06/15/25 1700			

MEDICAL PLAN (ICS 206 WF)

Controlled Unclassified Information//Basic

Medical Incident Report					
FOR A NON-EMERGENCY INCIDENT, WORK THROUGH CHAIN OF COMMAND TO REPORT AND TRANSPORT INJURED PERSONNEL AS NECESSARY.					
FOR A MEDICAL EMERGENCY: IDENTIFY ON-SCENE INCIDENT COMMANDER BY NAME AND POSITION AND ANNOUNCE "MEDICAL EMERGENCY" TO INITIATE RESPONSE FROM IMT COMMUNICATIONS/DISPATCH.					
Use the following items to communicate situation to communications/dispatch.					
1. CONTACT COMMUNICATIONS / DISPATCH (Verify correct frequency prior to starting report) <i>Ex: "Communications, Div. Alpha. Stand-by for Emergency Traffic."</i>					
2. INCIDENT STATUS: Provide incident summary (including number of patients) and command structure. <i>Ex: "Communications, I have a Red priority patient, unconscious, struck by a falling tree. Requesting air ambulance to Forest Road 1 at (Lat./Long.) This will be the Trout Meadow Medical, IC is TFLD Jones. EMT Smith is providing medical care."</i>					
Severity of Emergency / Transport Priority	<input type="checkbox"/> RED / PRIORITY 1 Life or limb threatening injury or illness. Evacuation need is IMMEDIATE <i>Ex: Unconscious, difficulty breathing, bleeding severely, 2° – 3° burns more than 4 palm sizes, heat stroke, disoriented.</i> <input type="checkbox"/> YELLOW / PRIORITY 2 Serious Injury or illness. Evacuation may be DELAYED if necessary. <i>Ex: Significant trauma, unable to walk, 2° – 3° burns not more than 1-3 palm sizes.</i> <input type="checkbox"/> GREEN / PRIORITY 3 Minor Injury or illness. Non-Emergency transport <i>Ex: Sprains, strains, minor heat-related illness.</i>				
Nature of Injury or Illness & Mechanism of Injury	<div style="display: flex; justify-content: space-between;"> <div></div> <div style="text-align: right; font-size: small;">Brief Summary of Injury or Illness (Ex: Unconscious, Struck by Falling Tree)</div> </div>				
Evacuation Request	Air Ambulance / Short Haul/Hoist Ground Ambulance / Other				
Patient Location	Descriptive Location & Lat. / Long. (WGS84)				
Incident Name	Geographic Name + Medical (Ex: Trout Meadow Medical)				
On-Scene Incident Commander	Name of on-scene IC of Incident within an Incident (Ex: TFLD Jones)				
Patient Care	Name of Care Provider (Ex: EMT Smith)				
3. INITIAL PATIENT ASSESSMENT: Complete this section for each patient as applicable (start with the most severe patient)					
Patient Assessment: See IRPG PAGE 106					
Treatment:					
4. EVACUATION PLAN: Evacuation Location (if different): (Descriptive Location (drop point, intersection, etc.) or Lat. / Long.) Patient's ETA to Evacuation Location:					
Helispot / Extraction Site Size and Hazards:					
5. ADDITIONAL RESOURCES / EQUIPMENT NEEDS: <i>Example: Paramedic/EMT, crews, immobilization devices, AED, oxygen, trauma bag, IV/fluid(s), splints, rope rescue, wheeled litter, HAZMAT, extrication</i>					
6. COMMUNICATIONS: Identify State Air/Ground EMS Frequencies and Hospital Contacts as applicable					
Function	Channel Name/Number	Receive (RX)	Tone/NAC *	Transmit (TX)	Tone/NAC *
COMMAND					
AIR-TO-GRND					
TACTICAL					
7. CONTINGENCY: Considerations: If primary options fail, what actions can be implemented in conjunction with primary evacuation method? Be thinking ahead.					
8. ADDITIONAL INFORMATION: Updates/Changes, etc.					
REMEMBER: Confirm ETAs of resources ordered. Act according to your level of training. Be Alert. Keep Calm. Think Clearly. Act Decisively.					