



**Post**

# **Incident Action Plan**



**Tuesday June 17, 2025**

**Day Operations 0600-2200**



***ID-NCF-000181***

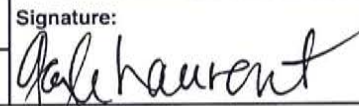
***P1S2M8 (0117)***

**For Check-in, Maps & IAP**



<b>INCIDENT OBJECTIVES</b>	1. Incident Name	2. Date Prepared	3. Time Prepared
	Post Fire	6/16/2025	1400
4. Operational Period			
Tuesday, June 17, 2025		DAY SHIFT 0600-2200	
Intent, Objectives			
<p><b><u>Commander's Intent</u></b></p> <p>Success is defined as prioritizing fire fighter safety, minimizing potential impacts/threats to human populations, private land, infrastructure and other identified values by effective risk management and enhanced coordination.</p> <p>Ensure that all incident actions reflect a commitment to aviation, responder and public safety utilizing the risk management process outlined in the IRPG, adherence to the 10 Standard Firefighting Orders, mitigation of the 18 Situations That Shout Watch Out and LCES. If you cannot mitigate a tactical hazard to an acceptable level of risk, do not implement the corresponding tactical action until such time as the risk can be satisfactorily mitigated before re-engaging. Ensure this Commander's Intent is clearly communicated and understood by all resources.</p> <p>Treat all Incident Management personnel, cooperators, contractors and the local public with dignity and respect, creating a "no tolerance" atmosphere for harassment, discrimination, alcohol, or federally prohibited substances.</p> <p><b><u>Operational Objectives</u></b></p> <ol style="list-style-type: none"> <li>1. Execute a full suppression strategy utilizing direct, indirect, confine/ contain and mixed tactics to minimize impacts to values at risk and firefighter exposure both in the near- and long-term timeframe of the incident.</li> <li>2. Prevent or minimize fire impacts to these prioritized critical values: Highway 12 corridor, Weir Cr. trail and hot springs area, Forest Service infrastructure (bridges, campgrounds, kiosks, etc.), Ashpile Outfitter Camp, Western Pacific Timber lands, and natural resources (cultural/ heritage sites, aquatic species, etc.).</li> <li>3. Provide Initial Attack within the planning area.</li> <li>4. Consider operational strategies and tactics that minimize impacts to sensitive areas and anadromous fisheries.</li> </ol> <p><b><u>Management Objectives</u></b></p> <ol style="list-style-type: none"> <li>1. Provide timely and accurate dissemination of information to fire-adjacent residences and the jurisdictional agencies. Keep these entities informed of management goals, objectives, successes and challenges on the incident.</li> <li>2. Manage and/or mitigate impacts to the identified values at risk as prioritized by the jurisdictional agencies. Operations personnel should coordinate with appropriate READ(s) to document, and, if necessary, coordinate mitigation measures related to threatened and endangered species, cultural sites, and minimize introduction and spread of noxious/exotic weeds and aquatic species.</li> <li>3. Ensure costs related to incident management actions are commensurate with the values at risk.</li> </ol>			
8. ATTACHMENTS (X IF ATTACHED)			
<input checked="" type="checkbox"/> ICS 203 <input checked="" type="checkbox"/> ICS 204 <input checked="" type="checkbox"/> ICS 205 <input checked="" type="checkbox"/> ICS 206 <input checked="" type="checkbox"/> ICS 220		<input checked="" type="checkbox"/> Weather Forecast/Fire Behavior Analysis <input checked="" type="checkbox"/> Safety Message <input checked="" type="checkbox"/> Finance, Logistics and Demob Messages <input checked="" type="checkbox"/> 8 Line – Medical Incident Report	
9. Prepared By (Planning Section Chief)		10. Approved By (Incident Commander)	
Julie Shea - PSCC		Shawn Borgen – ICCI (t)	
ICS 202			

## ORGANIZATION ASSIGNMENT LIST (ICS 203)

<b>1. Incident Name:</b>		<b>2. Operational Period:</b> DAY	
POST		Date/Time From: 06/17/2025 0600 TUE	Date/Time To: 06/17/2025 2200 TUE
<b>3. Incident Commander(s) and Command Staff:</b>		<b>7. Operations Section:</b>	
COMPLEX INCIDENT COMMANDER	JOE SAMPSON SHAWN BORGEN (T)	PLANNING OPS	ASHLEY SITES JT GILMAN (T)
DEPUTY	RICK CONNELL	LINE OPS	KEVIN SMITH
INFORMATION OFFICER	JENI GARCIN, KIM SMOLT, STEFANI SPENCER (V)	DIVISION/GROUP	A MIKE KING MATT KOSOVICH (T)
SAFETY OFFICER	LEROY HOLGUIN MIKE SMITH (T)	DIVISION/GROUP	D SCOTT DRAKE KYLE ERRECART (T)
<b>4. Agency/Organization Representative(s):</b>		DIVISION/GROUP	G LOUIS FLEMING CALEB OLANDER (T)
		DIVISION/GROUP	Z JASON MONROE JEFF ARMSTRONG (T)
		<b>7b. Air Operations Branch:</b>	
<b>Agency/Organization</b>	<b>Name</b>	AIR OPS BRANCH DIRECTOR	STEVE CROY
NEZ PERCE-CLEARWATER NF	BRANDON KNAPTON RON TIPTON (T)	AIR SUPPORT SUPERVISOR	JEFF POLACK JEFF QUICK
RESOURCE ADVISOR	JIM LUTES KAYTI BAUER (T)	HELICOPTER MGR	MARK VANDLIK (T)
INCIDENT BUSINESS ADVISOR	SAVANHA PAREDES	<b>8. Finance/Administration Section:</b>	
<b>5. Planning Section:</b>		CHIEF	BIDDY SIMET; MANDIE WILLENBERG AMELIA VELASCO (T)
CHIEF	JULIE SHEA	TIME UNIT	ANNA LOWELL
RESOURCES UNIT	PATTY BATES	COMP/CLAIMS UNIT	TORIE KOLLER JENNIFER HEBBELER (T)
SITUATION UNIT	LAILA LIENESCH (VIRTUAL)	COST UNIT	CHELSEA MONKS
DEMOBILIZATION UNIT	GAYLE LAURENT	PROCUREMENT UNIT	STEW WILLIAMS (T)
DOCUMENTATION UNIT	SPENCER POLLOCK (VIRTUAL)		
FIRE BEHAVIOR ANALYST	MIKE PAGOAGA		
GIS SPECIALIST	BRIAN GARDNER		
TECHNOLOGY SUPPORT SPECIALIST	MARY SIMONIS, SUE ROSE		
INCIDENT METEOROLOGIST	TRENT SMITH		
STRATEGIC OPERATION PLANNER	JUSTIN PAPPANI		
LONG TERM ANALYST	JON RIECK		
<b>6. Logistics Section:</b>			
CHIEF	PETER PAPPAS		
DEPUTY	BILL LAUER; JEREMIAH GREENE		
SUPPLY UNIT	DAVE COOPER		
FACILITIES UNIT	PAT NELSON		
GROUND SUPPORT UNIT	BRAD EMRICK		
COMMUNICATIONS UNIT	DALTON BLACK		
MEDICAL UNIT	ROSEMARY MYERS, RAY MINES SADE GALLOWAY (T)		
SECURITY UNIT	BILL HITT		
FOOD UNIT	JUSTIN TRODICK		
ORDERING MANAGER	DARCY WHEELER (VIRTUAL) LYNDA MURPHY		
<b>9. Prepared By:</b>		<b>Signature:</b>	
Name: GAYLE LAURENT	Position/Title: DMOB		
ICS 203	IAP Page		
		Date/Time: 06/16/2025 1203	



## Fire Weather Forecast



**FORECAST NO:** 04

**PREDICTION FOR:** Tuesday-Wednesday

**SHIFT DATE:** Tuesday 06/17/2025

**TIME AND DATE ISSUED:** 06/16/2025 1900 hrs

**INCIDENT:** Post Fire

**UNIT:** Clearwater NF

**SIGNED:** Trent Smith *Trent P. Smith*

Incident Meteorologist (IMET)

---

**Discussion:** A weak ridge of high pressure will be sliding over the area the next couple of days causing fairly sunny skies with some afternoon cumulus clouds. Temperatures will remain seasonally above average with fairly low humidity readings. Gusty westerly winds will once again develop during the afternoon. The strongest winds are expected on Wednesday.

### **WEATHER FORECAST FOR TODAY:**

**Sky/Weather:** Mostly sunny becoming partly cloudy in the afternoon. 5% chance of rain showers in the afternoon.

**Max Temperature:** Bottom: 79-84; Top: 72-77

**Min RH:** 22-27 percent.

#### **20 ft Winds:**

**Lower Valleys:** Terrain driven 2-8 mph becoming west 8-13 mph gusts to 25 mph in the afternoon.

**Mid-slopes and Ridges:** Terrain driven 2-5 mph becoming west 10-15 mph gusts to 30 mph by early afternoon.

**Transport Wind:** W 15 mph.

**Inversion:** 500 ft lifting by 0700 PDT reaching 10000 ft MSL by 1400 PDT.

### **TONIGHT:**

**Sky/Weather:** Clear.

**Min Temperature:** 46-51.

**Max RH:** Bottom: 82-87 percent; Top: 61-68 percent.

#### **20 ft Winds:**

**Valleys/Lower Slopes:** West 5-10 mph becoming terrain driven 2-6 mph after sunset.

**Ridges:** West 8-13 mph becoming terrain driven 3-8 mph after midnight.

**Inversion:** Developing after 2100 near 700 ft.

### **WEDNESDAY:**

**Sky/Weather:** Mostly sunny..

**Max Temperature:** Bottom: 81-86; Top: 74-79.

**Min RH:** 23-28 percent.

#### **20 ft Winds:**

**Lower Valleys:** Terrain driven 2-8 mph becoming west 8-13 mph gusts to 25 in the afternoon.

**Mid-slopes and Ridges:** Terrain driven 3-8 mph becoming west 10-15 mph gusts to 35 mph in the afternoon.

**Transport Wind:** W 23 mph. **Inversion:** Increasing to 9500 ft MSL by 1500 PDT.

---

Weather observations can be texted to 406-360-6330 or emailed to [trent.smith@noaa.gov](mailto:trent.smith@noaa.gov)

# FIRE BEHAVIOR FORECAST

FORECAST NUMBER: 3

TYPE OF FIRE: Wildland Fire

FIRE NAME: POST

OPERATIONAL PERIOD: Tuesday, 06/17/2025

DATE ISSUED: June 16, 2025

TIME ISSUED: 1900

UNIT: ID-NCF

SIGNED: Mike Pagoaga - FBAN

## WEATHER

Temp: 79-84 RH: 22-27%

Wind: Terrain driven shifting to west and increasing 10-15,  
gusts up to 30

*Local Weather Thresholds that shout **WATCH OUT**  
Temperatures above 85°, Relative Humidity below 20%,  
20' winds above 5 mph*

## FUELS

Predominant fuels are traditional high load, timber understory (TU5), and moderate load, timber understory (TU2) in continuous mixed conifer. Fuels Moistures at critical levels with 100-hour and 1000-hour fuel moistures near 14%. ERC values approaching the 90th percentile.

Be aware of profuse spotting potential of sub-alpine fir and lichen growing thick on limbs

## FIRE BEHAVIOR

### General Fire Behavior

Slightly moderated conditions compared to yesterday. Temperatures remain above average, and fuels remain drought stressed. The fire will continue to burn through heavy dead fuels where available. Single tree torching and short-range spotting can be expected after 1200 when winds align with Hwy 12.

ERC: 90% Fine Dead Fuel Moisture: 6%  
Probability of Ignition 60%, Short range spotting potential

### Specific Fire Behavior

#### **Division A:**

Expect single tree torching near H-5 as afternoon winds along ridgetops are highest. Fuels outside of fire perimeter will be receptive of most firebrands.

#### **Division Z:**

After many days of increased warming and drying, any heat outside of primary line will have the potential to show today. Watch for this to occur around 1400 when relative humidity is the lowest.

#### **Division G:**

Heat outside of primary line will continue to threaten Hwy 12 as they consume. Single tree torching should be expected as temperatures are highest along the southern end of the division.

#### **Division D:**

Limited fire behavior is expected as fuels are largely sheltered.

## Safety

Falling snags can be both burned and unburned.  
Numerous trees in the area have been damaged from storms.

# Division/Group Assignment List (ICS 204 WF)

Controlled Unclassified Information//Basic

1. Incident Name:				3.			
POST				Branch:		Division/Group:	
2. Operational Period: DAY						A	
Date/Time From: 06/17/2025 0600 TUE		Date/Time To: 06/17/2025 2200 TUE					
4. Operations Personnel							
OPERATIONS CHIEF PLANNING		ASHLEY SITES JT GILMAN (T)		OPERATIONS CHIEF LINE		KEVIN SMITH	
DIVISION/GROUP SUPERVISOR		MIKE KING MATT KOSOVICH (T)					
5. Resources Assigned this Period							
Strike Team / Task Force / Resource Designator		LWD	Leader	Number Persons	Drop Off PT./Time	Pick Up PT./Time	
C-7 FLATHEAD IHC		06/23	MATT DELANY	23			
O-41 REMS KOOTENAI COUNTY FIRE & RESCUE		06/29	BRYON SMITH	4			
6. Control Operations/Work Assignments:							
Task: Implement direct tactics from H1 to H5							
Purpose: To protect Highway 12 corridor, Weir Creek, and Ashpile Outfitter Camp							
End state: Fire progression to west is halted.							
7. Special Instructions:							
<i>Evaluate all areas for snags and watch out for green trees falling. Utilize mixed handline/cold trailing tactics where appropriate.</i>							
8. Division/Group Communication Summary							
Function	Channel	RX Frequency N/W	RX Tone/NAC	TX Frequency N/W	TX Tone/NAC	Mode	
COMMAND	7	170.4250	131.8	168.0750	131.8	A	
TACTICAL	1	166.7250	131.8	166.7250	131.8	A	
AIR TO GROUND	13	166.6125		166.6125		A	
9. Prepared By (Resource Unit Leader)			Approved By (Planning Section Chief)		Date	Time	
PATTY BATES			JULIE SHEA		06/16/2025	2100	

**Division/Group Assignment List (ICS 204 WF)**  
Controlled Unclassified Information//Basic

<b>1. Incident Name:</b>				<b>3.</b>			
POST				<b>Branch:</b>		<b>Division/Group:</b>  D	
<b>2. Operational Period:</b> DAY							
Date/Time From: 06/17/2025 0600 TUE		Date/Time To: 06/17/2025 2200 TUE					
<b>4. Operations Personnel</b>							
OPERATIONS CHIEF PLANNING		ASHLEY SITES JT GILMAN (T)		OPERATIONS CHIEF LINE		KEVIN SMITH	
DIVISION/GROUP SUPERVISOR		SCOTT DRAKE KYLE ERRECART (T)					
<b>5. Resources Assigned this Period</b>							
Strike Team / Task Force / Resource Designator		LWD	Leader	Number Persons	Drop Off PT./Time	Pick Up PT./Time	
C-1 TRAPPER CREEK HC2IA		06/24	NAT SUPOLA	22			
C-2 GRAYBACK FORESTRY, HC2IA		06/24	MATT DOUGHERTY	20			
O-8 TFLD JORDAN FRANCOM				1			
O-10.64 TFLD NICK CLARK (T)		06/24		1			
O-10.6 SOFC ADAM CARR		06/18		1			
<b>6. Control Operations/Work Assignments:</b>							
Task: Continue implementing direct handline and snagging operations around Delta Spot Fire, prep contingency lines where applicable.							
Purpose: Minimize fire's spread to the east to protect Highway 12 corridor and private Western Pacific Timberland assets. Provide contingency holding options to be utilized if current primary plan is unsuccessful.							
End state: No additional fire spread from spot fire							
<b>7. Special Instructions:</b>							
Meeting location for incoming resources is DP 10							
<b>8. Division/Group Communication Summary</b>							
Function	Channel	RX Frequency N/W	RX Tone/NAC	TX Frequency N/W	TX Tone/NAC	Mode	
COMMAND	7	170.4250	131.8	168.0750	131.8	A	
TACTICAL	2	166.7750	131.8	166.7750	131.8	A	
AIR TO GROUND	13	166.6125		166.6125		A	
<b>9. Prepared By (Resource Unit Leader)</b>			<b>Approved By (Planning Section Chief)</b>		<b>Date</b>		<b>Time</b>
PATTY BATES			JULIE SHEA		06/16/2025		2100

# Division/Group Assignment List (ICS 204 WF)

Controlled Unclassified Information//Basic

<b>1. Incident Name:</b>				<b>3.</b>			
POST				Branch:		Division/Group:  <div style="text-align: center; font-weight: bold; font-size: 1.2em;">G</div>	
<b>2. Operational Period:</b> DAY							
Date/Time From: 06/17/2025 0600 TUE		Date/Time To: 06/17/2025 2200 TUE					
<b>4. Operations Personnel</b>							
OPERATIONS CHIEF PLANNING		ASHLEY SITES JT GILMAN (T)		OPERATIONS CHIEF LINE		KEVIN SMITH	
DIVISION/GROUP SUPERVISOR		LOUIS FLEMING CALEB OLANDER (T)					
<b>5. Resources Assigned this Period</b>							
Strike Team / Task Force / Resource Designator	LWD	Leader	Number Persons	Drop Off PT./Time	Pick Up PT./Time		
C-4 VALE IHC	06/25	GLEN HEITZ	24				
C-5 RUBY MOUNTAIN IHC	06/26	JUSTIN ZABALA	21				
C-6 CEDAR CITY IHC	06/25	JOHN HUNT	22				
C-3 PALOUSE CREW HC2IA	06/24	CHAD BORG	19				
O-31 WFM1 SELWAY	06/29	JT SOHR	11				
O-10.71 TFLD RYAN WILLIAMS	06/29		1				
O-40 TFLD (T) JONATHON FUENTES	06/29		1				
O-29 FMOD COURVILLE LOGGING	06/28	MATT COURVILLE	2				
O-30 FMOD MILLER CREEK REFORESTATION	06/27	NIC JONES; JORDAN LAMBER	2				
O-25 EMPF BEST PRACTICE MEDICINE	06/28	SAM HILL	1				
E-3 AMBO1 BEST PRACTICE MEDICINE	06/25	MISTY BAUER; ETHAN BIEDERMANN	2				
<b>6. Control Operations/Work Assignments:</b>							
<p>Task: Find and contain any spots beyond northern fire perimeter. Mitigate snags and begin direct handline construction/cold trailing along west edge of DIV G.</p> <p>Purpose: Contain fire to current footprint to protect Highway 12 corridor and Western Pacific Timberland holdings.</p> <p>End state: Keep fire north of Highway 12 and west of Post Office Creek. Minimize impacts to the Highway 12 corridor.</p>							
<b>7. Special Instructions:</b>							
<p><i>Evaluate all areas for snags and watch out for green trees falling. Utilize mixed handline/cold trailing tactics where appropriate.</i></p>							
<b>8. Division/Group Communication Summary</b>							
Function	Channel	RX Frequency N/W	RX Tone/NAC	TX Frequency N/W	TX Tone/NAC	Mode	
COMMAND	7	170.4250	131.8	168.0750	131.8	A	
TACTICAL	3	168.2500	131.8	168.2500	131.8	A	
AIR TO GROUND	13	166.6125		166.6125		A	
<b>9. Prepared By (Resource Unit Leader)</b>		<b>Approved By (Planning Section Chief)</b>			<b>Date</b>	<b>Time</b>	
PATTY BATES		JULIE SHEA			06/16/2025	2100	

# Division/Group Assignment List (ICS 204 WF)

Controlled Unclassified Information//Basic

<b>1. Incident Name:</b>				<b>3.</b>			
POST				Branch:		Division/Group:  <div style="text-align: center; font-weight: bold; font-size: 1.2em;">Z</div>	
<b>2. Operational Period:</b> DAY							
Date/Time From: 06/17/2025 0600 TUE		Date/Time To: 06/17/2025 2200 TUE					
<b>4. Operations Personnel</b>							
OPERATIONS CHIEF PLANNING		ASHLEY SITES JT GILMAN (T)		OPERATIONS CHIEF LINE		KEVIN SMITH	
DIVISION/GROUP SUPERVISOR		JASON MONROE JEFF ARMSTRONG (T)					
<b>5. Resources Assigned this Period</b>							
Strike Team / Task Force / Resource Designator	LWD	Leader	Number Persons	Drop Off PT./Time	Pick Up PT./Time		
C-10 HC2IA DILLON INTERAGENCY CREW #1	06/23	BRYCHAN DEMONEY- GROSS	19				
E-12 FNF - ENGINE 682	06/28	CLINTON DEAN	7				
O-28 FMOD - FALLER MODULE - ALASKA CUTTERS	06/27	RONDA LECLAIR; JAMES LECLAIR	2				
O-24 EMPF BEST PRACTICE MEDICINE LLC	06/28	TREVOR LEARY	1				
E-16 AMBO 2 AERIE BACKCOUNTRY A03397	06/28	TRENTON HARPER	2				
O-10.72 SOFR KEVIN PFISTER	06/27		1				
<b>6. Control Operations/Work Assignments:</b>							
<p>Task: Implement direct line within division where appropriate, using mixed tactics. Mop up accordingly.</p> <p>Purpose: Minimize fire spread to the South to protect Highway 12 corridor</p> <p>End state: Fire perimeter is secured and Highway 12 corridor is not impacted. Snags are removed that could impact the Highway and public visitors.</p>							
<b>7. Special Instructions:</b>							
<p><i>Utilize mixed handline/cold trailing tactics where appropriate.</i></p>							
<b>8. Division/Group Communication Summary</b>							
Function	Channel	RX Frequency N/W	RX Tone/NAC	TX Frequency N/W	TX Tone/NAC	Mode	
COMMAND	7	170.4250	131.8	168.0750	131.8	A	
TACTICAL	4	168.6000	131.8	168.6000	131.8	A	
AIR TO GROUND	13	166.6125		166.6125		A	
<b>9. Prepared By (Resource Unit Leader)</b>		<b>Approved By (Planning Section Chief)</b>			<b>Date</b>	<b>Time</b>	
PATTY BATES		JULIE SHEA			06/16/2025	2100	



1. Incident Name:	2. Date Time Prepared:	3. Operational Period Date/Time:
POST	06/16/25 1500	06/17/2025 - 06/17/25 / 0600-2200

4. Basic Radio Channel Utilization											
CH #	Function	Channel Name	Assignment	RX Frequency	RX Tone/NAC	N/W	TX Frequency	TX Tone/NAC	N/W	Mode	Remarks
1	TACTICAL	TAC 1	DIV A	166.77250	131.8	N	166.7250	131.8	N	A	
2	TACTICAL	TAC 2	DIV D	166.77750	131.8	N	166.7750	131.8	N	A	
3	TACTICAL	TAC 3	DIV G	168.25000	131.8	N	168.2500	131.8	N	A	
4	TACTICAL	TAC 4	DIV Z	168.60000	131.8	N	168.6000	131.8	N	A	
5	TACTICAL	TAC 5	UNASSIGNED	168.20000	131.8	N	168.2000	131.8	N	A	
6	TACTICAL	TAC 6	I/A	168.05000	131.8	N	168.0500	131.8	N	A	
7	COMMAND	CMD 7	ALL DIV	170.42500	131.8	N	168.0750	131.8	N	A	NIFC C3
8	COMMAND	CMD 8	ICP	170.41250	131.8	N	165.96250	131.8	N	A	NIFC C10
9		OPEN	FUTURE			N		123.0	N	A	
10	REPEATER	CASTLE BUTTE	Local Repeater	172.22500	0.0	N	165.70000	156.7	N	A	LOCAL REPEATER
11	REPEATER	BEAR MTN	Local Repeater	171.57500	0.0	N	166.26250	156.7	N	A	LOCAL REPEATER
12	REPEATER	ROCKY PT	Local Repeater	171.57500	0.0	N	166.26250	162.2	N	A	LOCAL REPEATER
13	AIR TO GROUND	A/G PRI	AIR TO GROUND	166.61250	0.0	N	166.61250	0.0	N	A	
14	AIR TO GROUND	A/G SEC	AIR TO GROUND	168.40000	0.0	N	168.40000	0.0	N	A	
15	MEDIVAC	VMED 28	MEDIVAC	155.34000	0.0	N	155.34000	156.7	N	A	NON-AGENCY EMERGENCY AIRCRAFT
16	AIR GUARD	AIR GUARD	ALL DIV	168.62500	0.0	N	168.62500	110.9	N	A	AIR GUARD
5.Special Instructions: POST61425				COMMS PHONE # 208-891-7653				Remarks: All communications including IWIs will come through Post Communications			
6. Prepared by : Communication Unit Leader				Name: Dalton Black				Signature:			



# Safety Message

## Sleep Deprivation

Sleep deprivation is cumulative and creates a "sleep debt" from which most individuals have difficulty recovering.

### Indicators of sleep deprivation:

- You need an alarm clock to wake up.
- You struggle to get out of bed.
- You feel irritable, tired, and stressed during the day.
- You have trouble concentrating or remembering.
- You fall asleep in a warm room.
- You need a nap to get through the day.
- You feel drowsy while driving.
- You fall asleep within five minutes of going to bed.

Monitor yourself and your fatigue level. Take the breaks you need to function effectively. You will find that folks around you will like you better if you are not grumpy.

## Fatigue

Fatigue management is the responsibility of every individual as well as every supervisor. It is not just the monitoring of hours worked but an assessment of a person's performance and ability during an event requiring long work shifts.

It has been determined that human performance deteriorated significantly after 12 hours of work. Long work shifts affect every individual differently, with significant facts being biological, social, and age. For example, an individual over 25 years old has less tolerance for sleep loss than someone younger.

The conclusion is that consecutive work shifts over 12 hours a day is a high-risk practice but can be mitigated with a variety of management practices such as split shifts, rotation of personnel, or frequent extended breaks.

**Team Safety Officers: Leroy Holguin and Mike Smith(t)**

**Safety is your Responsibility!**

**Northern Rockies Complex Incident Management Team 5**

# **POST LOGISTICS**

## **Supply and Ordering:**

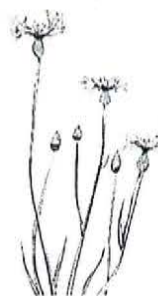
Supply hours 0600 – 2130

NFES cache items are ordered through the Supply Unit

All other items/local purchases are sent to Ordering inbox

## **Shower Hours**

0500 – 1200 and 1400 - 2200

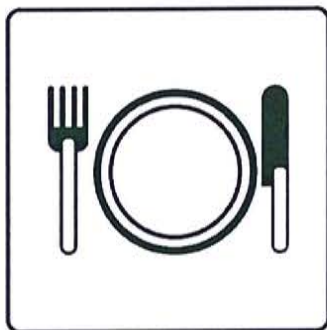


**Weed Wash is located at the Powell Idaho Dept  
Transportation yard**

## **Meal Hours**

Breakfast: 0530 – 0930

Dinner: 1800 – 2130





# Northern Rockies Chainsaw Parts Order Form

Please see the back page for part order numbers and items requiring an approved Property Loss and Damage form.

Name:	Gen. Msg #:
Resource #:	Request Date:
Contact #:	Need by Date/Time:
TO BE FILLED BY: (circle one):	<input type="checkbox"/> Buying Team <input type="checkbox"/> Home Unit <input type="checkbox"/> Cache

## Chainsaw Information

Make (circle one or fill in):	<input type="checkbox"/> Stihl <input type="checkbox"/> Husqvarna <input type="checkbox"/> Other:
Model:	
Serial #	
Bar Length (circle one):	<input type="checkbox"/> 20" <input type="checkbox"/> 24" <input type="checkbox"/> 28" <input type="checkbox"/> 30" <input type="checkbox"/> 32" <input type="checkbox"/> 36" <input type="checkbox"/> Other:

## Request:

Part Name and Number	Quantity	Part Name and Number	Quantity

## For Sprocket & Chain Orders (circle one or fill in):

# of Drivers:	
Pitch (*):	<input type="checkbox"/> 3/8" <input type="checkbox"/> .325" <input type="checkbox"/> Other:
Gauge:	<input type="checkbox"/> .50 <input type="checkbox"/> .063 <input type="checkbox"/> Other:
Tooth Layout:	<input type="checkbox"/> Full <input type="checkbox"/> Semi-Skip <input type="checkbox"/> Full Skip
Tooth Cut:	<input type="checkbox"/> Chisel <input type="checkbox"/> Semi-Chisel <input type="checkbox"/> Other:
# of Sprocket Teeth:	

☐ Concurrence (Line Supervisor i.e. DIVS): \_\_\_\_\_

☐ Supply Unit Leader has checked that the items ordered do not need an approved Property Loss & Damage Form, or that the approval is attached. (Supply Unit Leader checks box and initials here: \_\_\_\_\_).

First source of supply is Cache, shaded blocks indicate items available thru Northern Rockies Cache. Items requiring an approved Property Loss and Damage form are in a separate list at the bottom.												
PART	034/341	360/MS360	MS361	MS362	038/381	044/MS440	MS441	460/MS461	MS462	0640/650	MS560	MS580
Spark Plug (NFES# 000344)	Bosch WSR6F NGK BPMR7A Champion RC16Y	Bosch WSR6F NGK BPMR7A Champion RC16Y	Bosch WSR6F NGK BPMR7A Champion RC16Y	Bosch WSR6F NGK BPMR7A Champion RC16Y	Bosch WSR6F NGK BPMR7A Champion RC16Y	Bosch WSR6F NGK BPMR7A Champion RC16Y	Bosch WSR6F NGK BPMR7A Champion RC16Y	Bosch WSR6F NGK BPMR7A Champion RC16Y	Bosch WSR6F NGK BPMR7A Champion RC16Y	Bosch WSR6F NGK BPMR7A Champion RC16Y	Bosch WSR6F NGK BPMR7A Champion RC16Y	Bosch WSR6F NGK BPMR7A Champion RC16Y
Needle Cage Bearing (NFES# 066565)	9512-933-2380	9512-933-2380	9512-933-2380	9512-933-2380	9512-933-2380	9512-933-2380	9512-933-2380	9512-933-2380	9512-933-2380	9512-933-2380	9512-933-2380	9512-933-2380
Retaining Washer for Rim Sprocket	0000-958-1022	0000-958-1022	0000-958-1022	0000-958-1022	0000-958-1022	0000-958-1022	0000-958-1022	0000-958-1022	0000-958-1022	0000-958-1022	0000-958-1022	0000-958-1022
E Clip (NFES# 066517)	9460-624-0801	9460-624-0801	9460-624-0801	9460-624-0801	9460-624-1001	9460-624-1001	9460-624-1001	9460-624-1001	9460-624-1001	9460-624-1001	9460-624-1001	9460-624-1001
Fuel Filter	0000-350-3504	0000-350-3504	0000-350-3504	0000-350-3504	0000-350-3504	0000-350-3504	0000-350-3504	0000-350-3504	0000-350-3504	0000-350-3504	0000-350-3504	0000-350-3504
Air Filter - HD (NFES# 066756)	1125-120-1626	1125-120-1612	1135-120-1600	1140-140-4401	1119-120-1611	0000-140-4402	0000-140-4402	0000-140-4402	0000-140-4402	0000-140-4402	0000-140-4402	0000-140-4402
Pre Filter - OEM	N/A	N/A	N/A	N/A	1119-120-1500	0000-141-0300	0000-141-0300	0000-141-0300	N/A	0000-141-0300	0000-141-0300	0000-141-0300
Bar Nut (NFES# 06661)	0000-955-0801	0000-955-0801	0000-955-0801	0000-955-0801	0000-955-0801	0000-955-0801	0000-955-0801	0000-955-0801	0000-955-0801	0000-955-0801	0000-955-0801	0000-955-0801
Inner Slide Plate	1122-664-1000	1122-664-1000	1122-664-1000	1122-664-1000	1119-664-1000	1128-664-1001	1138-664-1000	1128-664-1001	1128-664-1001	1128-664-1001	1128-664-1001	1128-664-1001
STIHL RAPID - Super (RS)												
Chain 3/8" PITCH - .050" GA - DR	3623-005-0072	3623-005-0072	3623-005-0072	3623-005-0072	3623-005-0072	3623-005-0072	3623-005-0072	3623-005-0072	3623-005-0072	3623-005-0072	3623-005-0072	3623-005-0072
20" - 72 DR	N/A	3676-005-0084	3676-005-0084	3676-005-0084	3676-005-0084	3676-005-0084	3676-005-0084	3676-005-0084	3676-005-0084	3676-005-0084	3676-005-0084	3676-005-0084
25" - 84 DR (NFES# 006500)	3623-005-0084	3623-005-0084	3623-005-0084	3623-005-0084	3623-005-0084	3623-005-0084	3623-005-0084	3623-005-0084	3623-005-0084	3623-005-0084	3623-005-0084	3623-005-0084
28" - 91 DR	3623-005-0091	3623-005-0091	3623-005-0091	3623-005-0091	3623-005-0091	3623-005-0091	3623-005-0091	3623-005-0091	3623-005-0091	3623-005-0091	3623-005-0091	3623-005-0091
32" - 105 DR	N/A	N/A	N/A	N/A	N/A	N/A	N/A	N/A	N/A	N/A	N/A	N/A
STIHL RAPID - Super - Full Skip (RSF)												
Chain 3/8" PITCH - .050" GA - DR	3676-005-0072	3676-005-0072	3676-005-0072	3676-005-0072	3676-005-0072	3676-005-0072	3676-005-0072	3676-005-0072	3676-005-0072	3676-005-0072	3676-005-0072	3676-005-0072
20" - 72 DR	N/A	3676-005-0084	3676-005-0084	3676-005-0084	3676-005-0084	3676-005-0084	3676-005-0084	3676-005-0084	3676-005-0084	3676-005-0084	3676-005-0084	3676-005-0084
25" - 84 DR	3676-005-0091	3676-005-0091	3676-005-0091	3676-005-0091	3676-005-0091	3676-005-0091	3676-005-0091	3676-005-0091	3676-005-0091	3676-005-0091	3676-005-0091	3676-005-0091
28" - 91 DR	N/A	N/A	N/A	N/A	N/A	N/A	N/A	N/A	N/A	N/A	N/A	N/A
32" - 105 DR	N/A	N/A	N/A	N/A	N/A	N/A	N/A	N/A	N/A	N/A	N/A	N/A
Bar oli: Quantity - Gallon	NFES # 1880											
Bar oli: Quantity - Quart	NFES # 1869											
2 Cycle Oli: Quantity - Quart	NFES # 0341											

The following parts require an approved Property Loss & Damage form prior to ordering:

Guide Bars - 3/8" - .050" GA (STIHL ROLLOMATIC - ES)												
20"	3003-000-8822	3003-000-8822	3003-000-8822	3003-000-8822	3003-000-8822	3003-000-8822	3003-000-8822	3003-000-8822	3003-000-8822	3003-000-8822	3003-000-8822	3003-000-8822
25" (NFES# 066584)	N/A	3003-000-8830	3003-000-8830	3003-000-8830	3003-000-8830	3003-000-8830	3003-000-8830	3003-000-8830	3003-000-8830	3003-000-8830	3003-000-8830	3003-000-8830
28"	N/A	N/A	N/A	N/A	N/A	N/A	N/A	N/A	N/A	N/A	N/A	N/A
32"	N/A	N/A	N/A	N/A	N/A	N/A	N/A	N/A	N/A	N/A	N/A	N/A
Rim Sprocket Kit 3/8 - 7T	1125-007-1040	1125-007-1040	1125-007-1040	1125-007-1040	1119-007-1003	1128-007-1017	1128-007-1000	1128-007-1017	1128-007-1000	1128-007-1000	1128-007-1000	N/A
Clutch Drum	Order Sprocket Kit	Order Sprocket Kit	Order Sprocket Kit	Order Sprocket Kit	Order Sprocket Kit	Order Sprocket Kit	Order Sprocket Kit	Order Sprocket Kit	Order Sprocket Kit	Order Sprocket Kit	Order Sprocket Kit	Order Sprocket Kit
Rim Sprocket 3/8 7T (NFES# 066652)	0000-642-1231	0000-642-1231	0000-642-1231	0000-642-1231	0000-642-1223	0000-642-1223	0000-642-1223	0000-642-1223	0000-642-1223	0000-642-1223	0000-642-1223	N/A
Rim Sprocket Kit 3/8 - 8T	N/A	N/A	N/A	N/A	N/A	1128-007-1001	1128-007-1001	1128-007-1001	1128-007-1001	1128-007-1001	1128-007-1001	1128-007-1001
Clutch Drum	Order Sprocket Kit	Order Sprocket Kit	Order Sprocket Kit	Order Sprocket Kit	Order Sprocket Kit	Order Sprocket Kit	Order Sprocket Kit	Order Sprocket Kit	Order Sprocket Kit	Order Sprocket Kit	Order Sprocket Kit	Order Sprocket Kit
Rim Sprocket 3/8 - 8T	N/A	0000-642-1216	0000-642-1216	0000-642-1216	0000-642-1216	0000-642-1216	0000-642-1216	0000-642-1216	0000-642-1216	0000-642-1216	0000-642-1216	0000-642-1216
Clutch	1127-160-2050	1125-160-2005	1128-160-2004	1138-160-2010	1119-160-2000	1128-160-2001	1138-160-2010	1128-160-2004	1142-160-2000	1122-160-2005	1122-160-2002	1124-160-2005
Chain Adjuster Kit	1125-007-1036	1125-007-1021	1125-007-1021	1125-007-1021	1118-664-1600	1125-007-1021	1125-007-1021	1125-007-1021	1125-007-1021	1125-007-1021	1125-007-1021	1124-007-1008
Bump Strip	1121-648-6610	1121-648-6610	1121-648-6610	1121-648-6610	1120-664-1500	1121-648-6610	1121-648-6610	1121-648-6610	1121-648-6610	1121-648-6610	1121-648-6610	1121-648-6610
Starter Rope W/handle	1128-190-3400	1128-190-3400	1128-190-3400	1128-190-3400	1128-190-3400	1128-190-3400	1128-190-3400	1128-190-3400	1128-190-3400	1128-190-3400	1128-190-3400	1128-190-3400
Worm Gear (Oil)	1125-640-7110	1125-640-7110	1128-640-7112	1128-640-7112	1119-642-1501	1128-640-7112	1128-640-7112	1128-640-7112	1128-640-7112	1122-640-7105	1122-640-7105	1124-640-7512
Manifold Boot	1125-141-2200	1125-141-2200	1135-141-2200	1140-140-2503	1119-140-2500	1128-141-2204	1138-140-2508	1128-141-2204	1142-141-2200	1122-141-2200	1122-141-2201	1124-141-2202

Name & Contact # for Person Placing Order:

ORDER # \_\_\_\_\_

### Line Order

Date & Time Order Was Placed			Location and Time for Delivery (Div/LZ/DP/Lat Long)			Mode of Delivery (Ex: Driven/Helo/DIVS to pickup)		
<input type="text"/>			<input type="text"/>			<input type="text"/>		
<input type="text"/>			<input type="text"/>			<input type="text"/>		
#	Item	Quantity	#	Item	Quantity			
1	Meals Breakfast		25	Drip Torch Mix 5gal Mix= 3 1/2gal Diesel : 1 gal Gas				
2	Meals Lunch		26	Line Spike Hygiene Kit				
3	Meals Dinner		27	Backpack Pump				
4	Meals MRE's/case		28	Folding Tank - Size: <input type="text"/>				
5	Water 5 Gal Cubees		29	Pumpkin - Size: <input type="text"/>				
6	Gatorade Case		30	Hose 1 1/2"				
7	Batteries AA Flat		31	Hose 1"				
8	Batteries Specify Type: <input type="text"/>		32	Hose 3/4"				
9	Flagging Rolls		33	Reducer 1 1/2" X 1"				
10	Tarps/Plastic		34	Reducer 1" X 3/4"				
11	Parachute Cord		35	Gated Wye 1 1/2"				
12	Garbage Bags Box		36	Gated Wye 1"				
13	20 Person First Aid Kit		37	Gated Wye 3/4"				
14	Fuel (raw) Diesel 5 Gals		38	Shut Off Valve 3/4"				
15	Fuel (raw) Unleaded 5 Gals		39	In-Line Tee 1 1/2" X 1"				
16	Bar Oil 6 Pack		40	Nozzle 1 1/2" KK				
17	2-cycle oil/pumps Quarts		41	Nozzle 1" Forestry				
18	2-cycle oil/saws		42	Nozzle 3/4" Garden				
19	Tool Shovel		43	Chainsaw Kit				
20	Tool Pulaski		44	Mark 3 Pump w/ Kit (No Fuel) Control# _____				
21	Tool Combi		45	Lightweight Pump w/ Kit (No Fuel) Control# _____				
22	Tool Specify Type: <input type="text"/>							
23	Fusee Case		46	Sprinkler Kit				
24	Drip Torch		47	MISC				
Order Received in Supply by (name):			Time:					
Order Received in Transportation by (name):			Time:					
Order Received in Helibase by(name):			Time:					
Order Shipped to Line Unit by (name):			Time:					

Clear / Reset

Print

Save &/or Submit

## \*\*\*\*\*FINANCE MESSAGE\*\*\*\*\*

### Reminders:

For federal firefighters requesting **hazard pay for firefighting** on an uncontrolled fireline, please assure that the "Remarks" section of your CTR reflects the request. An example of the appropriate language is:

***"Firefighting on an uncontrolled fireline."***

*{you need a verb that describes what you're doing on the fireline}*

For federal firefighters requesting a compensable meal period during the day, a justification needs to be included in the "Remarks" section of your CTR. For a compensable lunch (mid-day meal period) the same Firefighting language will work. Here are the parameters as reflected in the 2025 NWCG Standards for Interagency Incident Business, Chapter 10, page 10-12:

### Meal Periods:

*Compensable meal periods are the exception, not the rule (5 CFR 551.411 (c) and 29 CFR 785.19 (a)).*

*Time for a meal period is not compensable if the employee is not required to perform substantial duties (86 Forest Practices Board Regulations 1026). When an employee's time and attention is primarily occupied by a private pursuit such as eating a meal, then the employee is completely relieved from duty and is not entitled to compensation under the FLSA (102 Labor Employee Press 39580).*

*Personnel on the fireline may be compensated for their meal period if all the following conditions are met:*

- the fire is not controlled, and*
- the Operations Section Chief decides that it is critical to the effort of controlling the fire that personnel remain at their post of duty and continue to work as they eat, and*
- the compensable meal break is approved by the supervisor at the next level, and it is documented on the CTR*

**Will the following resources please visit with Finance following your  
Division Breakouts:**

**C-3**

**C-4**

### Finance Contact Info:

**EMAIL: 2025.post.finance@firenet.gov**

**Phone: 208-867-9570**

## DEMOB INSTRUCTIONS

FOR EMERGENCY OR URGENT DEMOBS CONTACT YOUR SUPERVISOR FIRST AND THEN CONTACT THE DEMOB UNIT DIRECTLY AT 307.752.9362

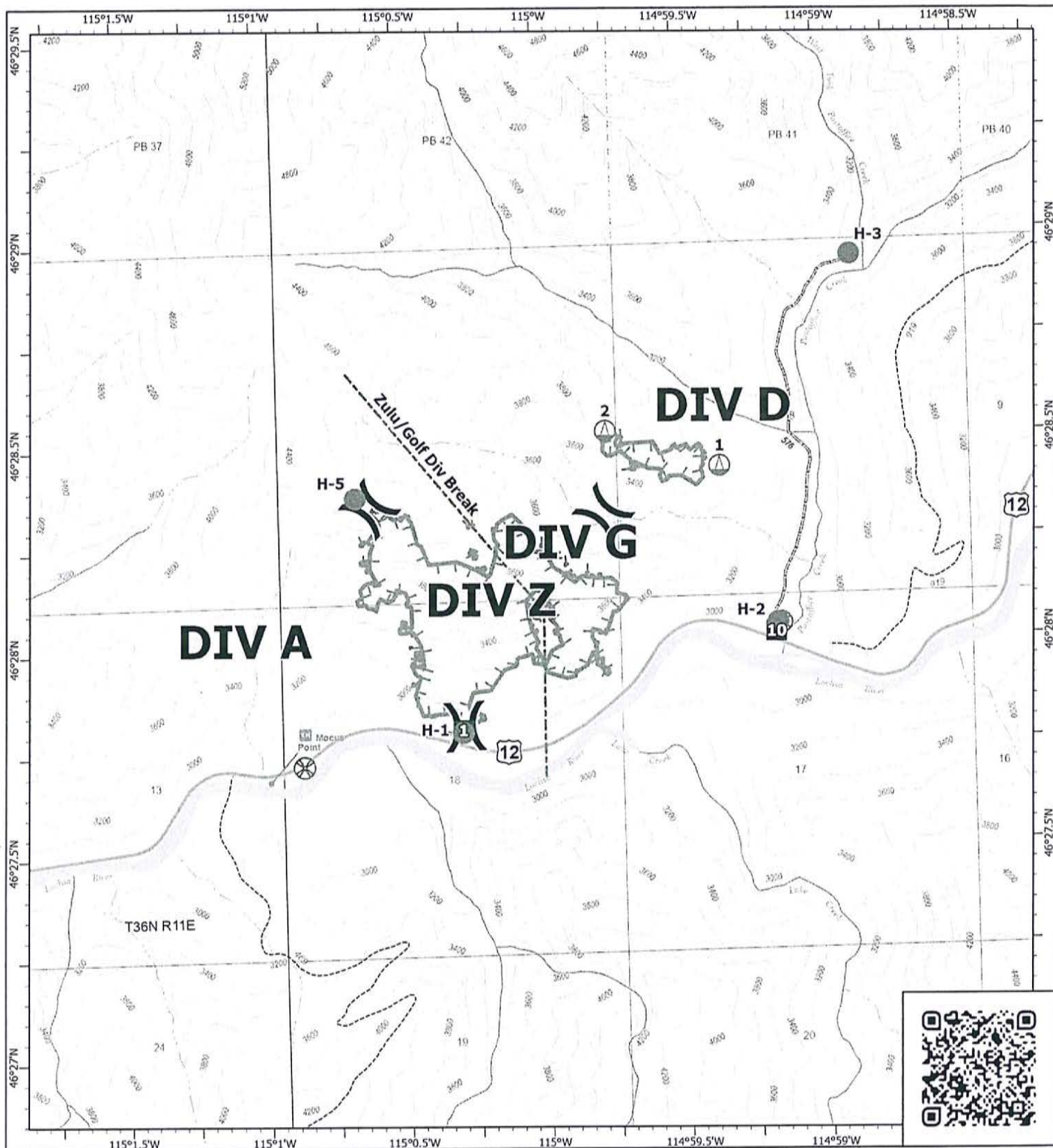
For flights, please contact [2025.post.demob@firenet.gov](mailto:2025.post.demob@firenet.gov) or call 307.752.9362 72 hours in advance, if possible.

After being notified by your supervisor of your tentative release date:

- Step 1. Return all supplies, radios, etc. that were checked out.
- Step 2. Return pool NERV rentals, non-Viper vehicles receive inspections.
- Step 2. All vehicles that have been on the fire line **MUST** go through weed wash.
- Step 3. After you have closed out with Finance, come to Demob to finalize travel.

*Any questions about the demob process, call 307.752.9362*

*or email [2025.post.demob@firenet.gov](mailto:2025.post.demob@firenet.gov)*



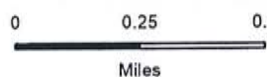
# IAP

Post

IDNCF-000181

06/16/2025 Day

151 acres at 06/14/2025 2256hrs



Miles

1:24,000 | R1S1 | 6/15/2025 2035

Acres from IR

North American 1983 Datum Lat Long Grid



- Helispot
- Sling Site
- UAS Launch and Recovery
- Division Break
- Drop Point
- Other
- Uncontained Fire Edge
- Wildfire Perimeter
- Scenic Byway
- Primary Highway
- Road, Not Maintained for Passenger Car
- FS Closed Road
- Trail
- Administrative FS Boundary

## ACTIVITY LOG (ICS 214)

[illegible]

## ACTIVITY LOG (ICS 214)

[illegible]

## MEDICAL PLAN (ICS 206)

<b>1. Incident Name:</b> Post Fire		<b>2. Operational Period:</b> Date From: 06/17/25 Time From: 0600		Date To: 06/17/25 Time To: 2200			
<b>3. Air Ambulances:</b>							
Name	Location	Contact Number(s)/Frequency	Paramedics on Site?				
Life Flight Network	MT, ID	911	<input checked="" type="checkbox"/> Yes <input type="checkbox"/> No				
			<input type="checkbox"/> Yes <input checked="" type="checkbox"/> No				
			<input type="checkbox"/> Yes <input type="checkbox"/> No				
			<input type="checkbox"/> Yes <input type="checkbox"/> No				
			<input type="checkbox"/> Yes <input type="checkbox"/> No				
			<input type="checkbox"/> Yes <input type="checkbox"/> No				
<b>4. Transportation (indicate air or ground):</b>							
Ambulance Service	Location	Contact Number(s)/Frequency	Level of Service				
MESI	Missoula, MT	911	<input checked="" type="checkbox"/> ALS <input type="checkbox"/> BLS				
Kooskia	Kooskia, ID	911	<input type="checkbox"/> ALS <input checked="" type="checkbox"/> BLS				
			<input type="checkbox"/> ALS <input type="checkbox"/> BLS				
			<input type="checkbox"/> ALS <input type="checkbox"/> BLS				
<b>5. Hospitals:</b>							
Hospital Name	Address, Latitude & Longitude if Helipad	Contact Number(s)/Frequency	Travel Time		Trauma Center	Burn Center	Helipad
			Air	Ground			
ST. Patrick Missoula, MT	LAT- N 46.52.31 LONG- W 113.59.58	911	20 min	1.5 hrs	<input checked="" type="checkbox"/> Yes Level: 2	<input type="checkbox"/> Yes <input checked="" type="checkbox"/> No	<input checked="" type="checkbox"/> Yes <input type="checkbox"/> No
Syringa General Grangeville, ID	LAT- N45.56.30 LONG- W116.07.80	911		2 hrs	<input type="checkbox"/> Yes Level: _____	<input type="checkbox"/> Yes <input checked="" type="checkbox"/> No	<input type="checkbox"/> Yes <input checked="" type="checkbox"/> No
					<input type="checkbox"/> Yes Level: _____	<input type="checkbox"/> Yes <input type="checkbox"/> No	<input type="checkbox"/> Yes <input type="checkbox"/> No
					<input type="checkbox"/> Yes Level: _____	<input type="checkbox"/> Yes <input type="checkbox"/> No	<input type="checkbox"/> Yes <input type="checkbox"/> No
					<input type="checkbox"/> Yes Level: _____	<input type="checkbox"/> Yes <input type="checkbox"/> No	<input type="checkbox"/> Yes <input type="checkbox"/> No
<b>6. Special Medical Emergency Procedures:</b> Due to remote location of incident, severe/critical patients will be transported from fire by helicopter, if possible Approved helispot at ICP, N 46.19.81/W 114.42.53 Please review and follow 8 Line Report							
<input checked="" type="checkbox"/> Check box if aviation assets are utilized for rescue. If assets are used, coordinate with Air Operations.							
<b>7. Prepared by (Medical Unit Leader):</b> Name: /S/ Sadie Galloway MEDLt Signature: _____							
<b>8. Approved by (Safety Officer):</b> Name: /S/ Leroy Holguin SOFC Signature: _____							
ICS 206		IAP Page _____		Date/Time: 06/16/25 1651			

# MEDICAL PLAN (ICS 206 WF)

Controlled Unclassified Information//Basic

## Medical Incident Report

**FOR A NON-EMERGENCY INCIDENT, WORK THROUGH CHAIN OF COMMAND TO REPORT AND TRANSPORT INJURED PERSONNEL AS NECESSARY.**

**FOR A MEDICAL EMERGENCY: IDENTIFY ON-SCENE INCIDENT COMMANDER BY NAME AND POSITION AND ANNOUNCE "MEDICAL EMERGENCY" TO INITIATE RESPONSE FROM IMT COMMUNICATIONS/DISPATCH.**

**Use the following items to communicate situation to communications/dispatch.**

**1. CONTACT COMMUNICATIONS / DISPATCH** (Verify correct frequency prior to starting report)

Ex: "Communications, Div. Alpha. Stand-by for Emergency Traffic."

**2. INCIDENT STATUS:** Provide incident summary (including number of patients) and command structure.

Ex: "Communications, I have a Red priority patient, unconscious, struck by a falling tree. Requesting air ambulance to Forest Road 1 at (Lat./Long.) This will be the Trout Meadow Medical, IC is TFLD Jones. EMT Smith is providing medical care."

Severity of Emergency / Transport Priority	<input type="checkbox"/> <b>RED / PRIORITY 1</b> Life or limb threatening injury or illness. Evacuation need is <b>IMMEDIATE</b> <i>Ex: Unconscious, difficulty breathing, bleeding severely, 2° – 3° burns more than 4 palm sizes, heat stroke, disoriented.</i> <input type="checkbox"/> <b>YELLOW / PRIORITY 2</b> Serious Injury or illness. Evacuation may be <b>DELAYED</b> if necessary. <i>Ex: Significant trauma, unable to walk, 2° – 3° burns not more than 1-3 palm sizes.</i> <input type="checkbox"/> <b>GREEN / PRIORITY 3</b> Minor Injury or illness. Non-Emergency transport <i>Ex: Sprains, strains, minor heat-related illness.</i>	
Nature of Injury or Illness & Mechanism of Injury		Brief Summary of Injury or Illness (Ex: Unconscious, Struck by Falling Tree)
Evacuation Request		Air Ambulance / Short Haul/Hoist Ground Ambulance / Other
Patient Location		Descriptive Location & Lat. / Long. (WGS84)
Incident Name		Geographic Name + Medical (Ex: Trout Meadow Medical)
On-Scene Incident Commander		Name of on-scene IC of Incident within an Incident (Ex: TFLD Jones)
Patient Care		Name of Care Provider (Ex: EMT Smith)

**3. INITIAL PATIENT ASSESSMENT:** Complete this section for each patient as applicable (start with the most severe patient)

Patient Assessment: See IRPG PAGE 106

Treatment:

**4. EVACUATION PLAN:**

Evacuation Location (if different): (Descriptive Location (drop point, intersection, etc.) or Lat. / Long.) Patient's ETA to Evacuation Location:

Helispot / Extraction Site Size and Hazards:

**5. ADDITIONAL RESOURCES / EQUIPMENT NEEDS:**

Example: Paramedic/EMT, crews, immobilization devices, AED, oxygen, trauma bag, IV/fluid(s), splints, rope rescue, wheeled litter, HAZMAT, extrication

**6. COMMUNICATIONS: Identify State Air/Ground EMS Frequencies and Hospital Contacts as applicable**

Function	Channel Name/Number	Receive (RX)	Tone/NAC *	Transmit (TX)	Tone/NAC *
COMMAND					
AIR-TO-GRND					
TACTICAL					

**7. CONTINGENCY: Considerations:** If primary options fail, what actions can be implemented in conjunction with primary evacuation method? Be thinking ahead..

**8. ADDITIONAL INFORMATION:** Updates/Changes, etc.

**REMEMBER:** Confirm ETAs of resources ordered. Act according to your level of training. Be Alert. Keep Calm. Think Clearly. Act Decisively.