



Incident Action Plan

POST FIRE

Sunday June 22, 2025

Day Operations 0600-2200



For IAP, Maps, Check-in & Demob

ID-NCF-000181

P1S2M8 (0117)



INCIDENT OBJECTIVES	1. Incident Name Post Fire	2. Date Prepared 6/21/2025	3. Time Prepared 2000
	4. Operational Period Sunday June 22, 2025 DAY SHIFT 0600-2200		
Intent, Objectives			
<p><u>Commander's Intent</u></p> <p>Success is defined as prioritizing fire fighter safety, minimizing potential impacts/threats to human populations, private land, infrastructure and other identified values by effective risk management and enhanced coordination.</p> <p>Ensure that all incident actions reflect a commitment to aviation, responder and public safety utilizing the risk management process outlined in the IRPG, adherence to the 10 Standard Firefighting Orders, mitigation of the 18 Situations That Shout Watch Out and LCES. If you cannot mitigate a tactical hazard to an acceptable level of risk, do not implement the corresponding tactical action until such time as the risk can be satisfactorily mitigated before re-engaging. Ensure this Commander's Intent is clearly communicated and understood by all resources.</p> <p>Treat all Incident Management personnel, cooperators, contractors and the local public with dignity and respect, creating a "no tolerance" atmosphere for harassment, discrimination, alcohol, or federally prohibited substances.</p> <p><u>Operational Objectives</u></p> <ol style="list-style-type: none"> 1. Execute a full suppression strategy utilizing direct, indirect, confine/ contain and mixed tactics to minimize impacts to values at risk and firefighter exposure both in the near- and long-term timeframe of the incident. 2. Prevent or minimize fire impacts to these prioritized critical values: Highway 12 corridor, Weir Cr. trail and hot springs area, Forest Service infrastructure (bridges, campgrounds, kiosks, etc.), Ashpile Outfitter Camp, Western Pacific Timber lands, and natural resources (cultural/ heritage sites, aquatic species, etc.). 3. Provide Initial Attack within the planning area. 4. Consider operational strategies and tactics that minimize impacts to sensitive areas and anadromous fisheries. <p><u>Management Objectives</u></p> <ol style="list-style-type: none"> 1. Provide timely and accurate dissemination of information to fire-adjacent residences and the jurisdictional agencies. Keep these entities informed of management goals, objectives, successes and challenges on the incident. 2. Manage and/or mitigate impacts to the identified values at risk as prioritized by the jurisdictional agencies. Operations personnel should coordinate with appropriate READ(s) to document, and, if necessary, coordinate mitigation measures related to threatened and endangered species, cultural sites, and minimize introduction and spread of noxious/exotic weeds and aquatic species. 3. Ensure costs related to incident management actions are commensurate with the values at risk. 			
8. ATTACHMENTS (X IF ATTACHED)			
<input checked="" type="checkbox"/> ICS 203 <input checked="" type="checkbox"/> ICS 204 <input checked="" type="checkbox"/> ICS 205 <input checked="" type="checkbox"/> ICS 206 <input checked="" type="checkbox"/> ICS 220		<input checked="" type="checkbox"/> Weather Forecast/Fire Behavior Analysis <input checked="" type="checkbox"/> Safety Message <input checked="" type="checkbox"/> Finance, Logistics and Demob Messages <input checked="" type="checkbox"/> 8 Line – Medical Incident Report	
9. Prepared By (Planning Section Chief)		10. Approved By (Incident Commander)	
Dylan Rader - PSCC		Shawn Borgen – ICCI (t)	

ORGANIZATION ASSIGNMENT LIST (ICS 203)

1. Incident Name:		2. Operational Period:	
POST		Date/Time From: 06/22/2025 0600 SUN	Date/Time To: 06/22/2025 2200 SUN
3. Incident Commander(s) and Command Staff:		PLANNING OPS JT GILMAN (T)	
COMPLEX INCIDENT COMMANDER	JOE SAMPSON SHAWN BORGEN (T)	LINE OPS	KEVIN SMITH
DEPUTY	RICK CONNELL	DIVISION/GROUP	A MIKE KING MATT KOSOVICH (T)
INFORMATION OFFICER	JENI GARCIN	DIVISION/GROUP	D SCOTT DRAKE KYLE ERRECART (T)
SAFETY OFFICER	LEROY HOLGUIN MIKE SMITH (T)	DIVISION/GROUP	G LOUIS FLEMING CALEB OLANDER (T)
		DIVISION/GROUP	Z JASON MONROE JEFF ARMSTRONG (T)
4. Agency/Organization Representative(s):		7b. Air Operations Branch:	
Agency/Organization	Name	AIR OPS BRANCH DIRECTOR	STEVE CROY
NEZ PERCE-CLEARWATER NF	BRANDON KNAPTON RON TIPTON (T)	AIR SUPPORT SUPERVISOR	JEFF POLACK JEFF QUICK
RESOURCE ADVISOR	JIM LUTES KAYTI BAUER (T)	HELICOPTER MGR	MARK VANDLIK (T)
INCIDENT BUSINESS ADVISOR	ELKA ERIKSON	8. Finance/Administration Section:	
5. Planning Section:		CHIEF	BIDDY SIMET
CHIEF	DYLAN RADER	TIME UNIT	ANNA LOWELL
SITUATION UNIT	LAILA LIENESCH (VIRTUAL)	COMP/CLAIMS UNIT	JENNIFER HEBBELER (T)
RESOURCES/DEMOB UNIT	GAYLE LAURENT	COST UNIT	CHELSEA MONKS
DOCUMENTATION UNIT	SPENCER POLLOCK (VIRTUAL)	PROCUREMENT UNIT	STEW WILLIAMS (T)
FIRE BEHAVIOR ANALYST	MIKE PAGOAGA		
GIS SPECIALIST	BRIAN GARDNER		
TECHNOLOGY SUPPORT SPECIALIST	MARY SIMONIS, SUE ROSE		
INCIDENT METEOROLOGIST	TRENT SMITH		
LONG TERM ANALYST	JON RIECK		
6. Logistics Section:			
CHIEF	PETER PAPPAS		
DEPUTY	BILL LAUER; JEREMIAH GREENE		
SUPPLY UNIT	DAVE COOPER		
FACILITIES UNIT	PAT NELSON		
GROUND SUPPORT UNIT	BRAD EMRICK		
COMMUNICATIONS UNIT	DALTON BLACK VANCE ANDERSEN		
MEDICAL UNIT	ROSEMARY MYERS, RAY MINES SADE GALLOWAY (T)		
SECURITY UNIT	BILL HITT		
FOOD UNIT	JUSTIN TRODICK		
ORDERING MANAGER	DARCY WHEELER LYNDA MURPHY (T)		
7. Operations Section:			
PLANNING OPS	ASHLEY SITES		
9. Prepared By:		Signature:	
Name:	GAYLE LAURENT	Position/Title:	RESL/DMOB
ICS 203	IAP Page	Date/Time:	06/21/2025 2000



Fire Weather Forecast



FORECAST NO: 09

PREDICTION FOR: Sunday-Monday

SHIFT DATE: Sunday 06/22/2025

TIME AND DATE ISSUED: 06/21/2025 1900 hrs

INCIDENT: Post Fire

UNIT: Clearwater NF

SIGNED: Trent Smith *Trent R. Smith*

Incident Meteorologist (IMET)

Discussion: The low pressure will be exiting out of the region today causing some wrap around precipitation along with afternoon thunderstorms. Temperatures will remain cool with high relative humidity readings. The shower activity and clouds will be diminishing throughout the night. Monday temperatures rise quickly as humidities drop into the 30% range.

WEATHER FORECAST FOR TODAY:

Sky/Weather: Mostly cloudy. 90% chance of rain. 30% chance of thunderstorms in the afternoon.

Max Temperature: 53-58

Min RH: 55-60 percent.

20 ft Winds:

Lower Valleys: Terrain driven 2-5 mph becoming west 5-10 mph in the afternoon.

Mid-slopes and Ridges: Terrain driven 2-8 mph becoming west 5-10 mph gusts to 15 mph in the afternoon.

Transport Wind: NW 10 mph.

Inversion: 500 ft lifting to 4500 ft MSL by 1500 PDT.

TONIGHT:

Sky/Weather: Mostly cloudy becoming partly cloudy after midnight. 50% chance of rain with a 20% chance of thunderstorms in the evening then 20% chance after midnight.

Min Temperature: 37-42.

Max RH: 95-100 percent.

20 ft Winds:

Valleys/Lower Slopes: West 5-10 mph becoming terrain driven 2-6 mph after sunset.

Ridges: West 5-10 mph becoming terrain driven 3-8 mph after midnight.

Inversion: Developing after 2100 near 500 ft.

MONDAY:

Sky/Weather: Partly cloudy. 20% chance of rain. 10% chance of thunderstorms in the afternoon.

Max Temperature: 66-71.

Min RH: 34-39 percent.

20 ft Winds:

Lower Valleys: Terrain driven 2-8 mph becoming west 5-10 mph in the afternoon.

Mid-slopes and Ridges: Terrain driven 3-8 mph becoming west 5-10 mph in the afternoon.

Transport Wind: W 10 mph. **Inversion:** Increasing to 8000 ft MSL by 1500 PDT.

Weather observations can be texted to 406-360-6330 or emailed to trent.smith@noaa.gov

FIRE BEHAVIOR FORECAST

FORECAST NUMBER: 8

TYPE OF FIRE: Wildland Fire

FIRE NAME: POST

OPERATIONAL PERIOD: Sunday, 06/22/2025

DATE ISSUED: June 21, 2025

TIME ISSUED: 1900

UNIT: ID-NCF

SIGNED: Mike Pagoaga - FBAN

WEATHER

MAX Temp: 53-58 **MIN Rh:** 55-60%

Wind: Terrain driven shifting to west and increasing 5-10,
gusts up to 15

*Local Weather Thresholds that shout **WATCH OUT**
Temperatures above 85°, Relative Humidity below 20%,
20' winds above 5 mph*

FUELS

Predominant fuels are traditional high load, timber understory (TU5), and moderate load, timber understory (TU2) in continuous mixed conifer.

Fuels have rebounded slightly following the recent rain, however, history shows that this is only temporary and if fire weather conditions return, these fuels will be back at critical thresholds within a week.

FIRE BEHAVIOR

General Fire Behavior

All recent hit signatures appear to be within the fire perimeter. Fire growth is not anticipated, but the threat of rollout or falling snags cannot be overlooked. Smoldering can be expected especially in areas of tight canopy spacing where precipitation may not reach the ground.

*ERC: Less than 35% Fine Dead Fuel Moisture: 11%
Probability of Ignition less than 20%*

Specific Fire Behavior

All Divisions: Containment efforts along with recent precipitation have decreased the potential for additional fire spread. The risk of falling snags and roll-out will remain due to slope steepness. Cloud cover and canopy density will limit solar heating. This will keep fire behavior at a minimum. Smoldering can be expected.

Safety

Smoldering fire behavior is a product of incomplete combustion. This can increase the exposure to harmful smoke while at the same time, destabilizing trees and root systems leading to a greater risk of falling snags and debris.

Division/Group Assignment List (ICS 204 WF)
Controlled Unclassified Information//Basic

1. Incident Name:				3.			
POST				Branch:		Division/Group: A	
2. Operational Period:							
Date/Time From: 06/22/2025 0600 SUN		Date/Time To: 06/22/2025 2200 SUN					
4. Operations Personnel							
OPERATIONS CHIEF PLANNING		ASHLEY SITES JT GILMAN (T)		OPERATIONS CHIEF LINE		KEVIN SMITH	
DIVISION/GROUP SUPERVISOR		MIKE KING MATT KOSOVICH (T)					
5. Resources Assigned this Period							
Strike Team / Task Force / Resource Designator		LWD	Leader	Number Persons	Drop Off PT./Time	Pick Up PT./Time	
C-7 FLATHEAD IHC		06/23	MATT DELANY	23			
6. Control Operations/Work Assignments:							
Task: Patrol and monitor Division A for any potential roll out.							
Purpose: To protect Highway 12 corridor, Weir Creek, and Ashpile Outfitter Camp							
End state: Fire progression to west is halted.							
7. Special Instructions:							
Evaluate all areas for snags and watch out for green trees falling, Utilize mixed handline/cold trailing tactics where appropriate.							
8. Division/Group Communication Summary							
Function	Channel	RX Frequency N/W	RX Tone/NAC	TX Frequency N/W	TX Tone/NAC	Mode	
COMMAND	7	170.4250	131.8	168.0750	131.8	A	
TACTICAL	1	166.7250	131.8	166.7250	131.8	A	
AIR TO GROUND	13	166.6125		166.6125		A	
9. Prepared By (Resource Unit Leader)			Approved By (Planning Section Chief)			Date	Time
GAYLE LAURENT			DYLAN RADER			06/21/2025	2000

Division/Group Assignment List (ICS 204 WF)

Controlled Unclassified Information//Basic

1. Incident Name:				3.			
POST				Branch:		Division/Group: D	
2. Operational Period:							
Date/Time From: 06/22/2025 0600		SUN		Date/Time To: 06/22/2025 2200		SUN	
4. Operations Personnel							
OPERATIONS CHIEF PLANNING		ASHLEY SITES JT GILMAN (T)		OPERATIONS CHIEF LINE		KEVIN SMITH	
DIVISION/GROUP SUPERVISOR		SCOTT DRAKE KYLE ERRECART (T)					
5. Resources Assigned this Period							
Strike Team / Task Force / Resource Designator		LWD	Leader	Number Persons	Drop Off PT./Time	Pick Up PT./Time	
C-1 TRAPPER CREEK HC2IA		06/24	NAT SUPOLA	22			
C-5.2 TFLD TYLER MOLLENBERG		06/26		1			
O-53 SOFF JORDAN FRANCOM		06/25		1			
O-10.64 TFLD NICK CLARK (T)		06/24		1			
O-10.6 SOFC ADAM CARR		06/25		1			
O-25 EMPF BEST PRACTICE MEDICINE		06/28	SAM HILL	1			
6. Control Operations/Work Assignments:							
Task: Continue to patrol and monitor for any hot spots in and around Delta spot fire.							
Purpose: Minimize fire's spread to the east to protect Highway 12 corridor. Provide contingency holding options to be utilized if current primary plan is unsuccessful.							
End state: No additional fire spread from spot fire							
7. Special Instructions:							
Meeting location for incoming resources is DP 10							
8. Division/Group Communication Summary							
Function	Channel	RX Frequency NW	RX Tone/NAC	TX Frequency NW	TX Tone/NAC	Mode	
COMMAND	7	170.4250	131.8	168.0750	131.8	A	
TACTICAL	2	166.7750	131.8	166.7750	131.8	A	
AIR TO GROUND	13	166.6125		166.6125		A	
9. Prepared By (Resource Unit Leader)			Approved By (Planning Section Chief)		Date	Time	
GAYLE LAURENT			DYLAN RADER		06/21/2025	2000	

Division/Group Assignment List (ICS 204 WF)

Controlled Unclassified Information//Basic


1. Incident Name:				3.			
POST				Branch:		Division/Group: G	
2. Operational Period:							
Date/Time From: 06/22/2025 0600 SUN		Date/Time To: 06/22/2025 2200 SUN					
4. Operations Personnel							
OPERATIONS CHIEF PLANNING		ASHLEY SITES JT GILMAN (T)		OPERATIONS CHIEF LINE		KEVIN SMITH	
DIVISION/GROUP SUPERVISOR		LOUIS FLEMING CALEB OLANDER (T)					
5. Resources Assigned this Period							
Strike Team / Task Force / Resource Designator		LWD	Leader	Number Persons	Drop Off PT./Time	Pick Up PT./Time	
C-3 PALOUSE CREW HC2IA		06/24	CHAD BORG	19			
O-31 WFM1 SELWAY		06/29	JT SOHR	11			
O-10.71 TFLD RYAN WILLIAMS		06/29		1			
O-40 TFLD (T) JONATHON FUENTES		06/29		1			
E-3 AMBO1 BEST PRACTICE MEDICINE		06/25	MISTY BAUER; ETHAN BIEDERMANN	2			
6. Control Operations/Work Assignments:							
Task: Patrol and mop up sufficiently to prevent further spread.							
Purpose: Contain fire to current footprint to protect Highway 12 corridor.							
End state: Keep fire north of Highway 12 and west of Post Office Creek. Minimize impacts to the Highway 12 corridor.							
7. Special Instructions:							
<i>Evaluate all areas for snags and watch out for green trees falling. Utilize mixed handline/cold trailing tactics when appropriate.</i>							
8. Division/Group Communication Summary							
Function	Channel	RX Frequency N/W	RX Tone/NAC	TX Frequency N/W	TX Tone/NAC	Mode	
COMMAND	7	170.4250	131.8	168.0750	131.8	A	
TACTICAL	3	168.2500	131.8	168.2500	131.8	A	
AIR TO GROUND	13	166.6125		166.6125		A	
9. Prepared By (Resource Unit Leader)			Approved By (Planning Section Chief)		Date		Time
GAYLE LAURENT			DYLAN RADER		06/21/2025		2000

Division/Group Assignment List (ICS 204 WF)
Controlled Unclassified Information//Basic

1. Incident Name:				3.			
POST				Branch:		Division/Group: Z	
2. Operational Period:							
Date/Time From: 06/22/2025 0600 SUN		Date/Time To: 06/22/2025 2200 SUN					
4. Operations Personnel							
OPERATIONS CHIEF PLANNING		ASHLEY SITES JT GILMAN (T)		OPERATIONS CHIEF LINE		KEVIN SMITH	
DIVISION/GROUP SUPERVISOR		JASON MONROE JEFF ARMSTRONG (T)					
5. Resources Assigned this Period							
Strike Team / Task Force / Resource Designator		LWD	Leader	Number Persons	Drop Off PT./Time	Pick Up PT./Time	
C-10 HC2IA DILLON INTERAGENCY CREW #1		06/23	BRYCHAN DEMONEY- GROSS	19			
E-12 FNF - ENGINE 682		06/28	CLINTON DEAN	7			
O-24 EMPF BEST PRACTICE MEDICINE LLC		06/28	TREVOR LEARY	1			
E-16 AMBO 2 AERIE BACKCOUNTRY A03397		06/28	TRENTON HARPER	2			
O-10.72 SOFR KEVIN PFISTER		06/27		1			
6. Control Operations/Work Assignments:							
Task: Patrol and mop up sufficiently to prevent further spread.							
Purpose: Minimize fire spread to the South to protect Highway 12 corridor							
End state: Fire perimeter is secured and Highway 12 corridor is not impacted. Snags are removed that could impact the Highway and public visitors.							
7. Special Instructions:							
Utilize mixed handline/cold trailing tactics where appropriate.							
8. Division/Group Communication Summary							
Function	Channel	RX Frequency N/W	RX Tone/NAC	TX Frequency N/W	TX Tone/NAC	Mode	
COMMAND	7	170.4250	131.8	168.0750	131.8	A	
TACTICAL	4	168.6000	131.8	168.6000	131.8	A	
AIR TO GROUND	13	166.6125		166.6125		A	
9. Prepared By (Resource Unit Leader)			Approved By (Planning Section Chief)		Date		Time
GAYLE LAURENT			DYLAN RADER		06/21/2025		2000

INCIDENT RADIO COMMUNICATIONS PLAN I-205

1. Incident Name: POST
 2. Date Time Prepared: 06/21/25 1330
 3. Operational Period Date/Time: 06/22/2025 - 06/22/25 / 0600-2200

4. Basic Radio Channel Utilization											
CH #	Function	Channel Name	Assignment	RX Frequency	RX Tone/NAC	N/W	TX Frequency	TX Tone/NAC	N/W	Mode	Remarks
1	REPEATER	TAC 1	DIV A	166.7250	131.8	N	166.7250	131.8	N	A	
2	REPEATER	TAC 2	DIV D	166.7750	131.8	N	166.7750	131.8	N	A	
3	REPEATER	TAC 3	DIV G	168.2500	131.8	N	168.2500	131.8	N	A	
4	REPEATER	TAC 4	DIV Z	168.6000	131.8	N	168.6000	131.8	N	A	
5	REPEATER	TAC 5	UNASSIGNED	168.2000	131.8	N	168.2000	131.8	N	A	
6	REPEATER	TAC 6	I/A	168.0500	131.8	N	168.0500	131.8	N	A	
7	REPEATER	CMD 7	ALL DIV	170.4250	131.8	N	168.0750	131.8	N	A	NIFC C3
8	REPEATER	CMD 8	ICP	170.4125	131.8	N	165.9625	131.8	N	A	NIFC C10
9	REPEATER	OPEN	FUTURE			N		123.0	N	A	
10	REPEATER	CASTLE BUTTE	Local Repeater	172.2250	0.0	N	165.7000	156.7	N	A	LOCAL REPEATER
11	REPEATER	BEAR MTN	Local Repeater	171.5750	0.0	N	166.2625	156.7	N	A	LOCAL REPEATER
12	REPEATER	ROCKY PT	Local Repeater	171.5750	0.0	N	166.2625	162.2	N	A	LOCAL REPEATER
13	AIR TO GROUND	A/G PRI	AIR TO GROUND	166.6125	0.0	N	166.6125	0.0	N	A	
14	AIR TO GROUND	A/G SEC	AIR TO GROUND	168.4000	0.0	N	168.4000	0.0	N	A	
15	MEDIVAC	VMED 28	MEDIVAC	155.3400	0.0	N	155.3400	156.7	N	A	NON-AGENCY EMERGENCY AIRCRAFT
16	AIR GUARD	AIR GUARD	ALL DIV	168.6250	0.0	N	168.6250	110.9	N	A	AIR GUARD
5.Special Instructions: POST61425		COMMS PHONE # 208-891-7653				Remarks: All communications including IWIs will come through Post Communications					
6. Prepared by : Communication Unit Leader		Name: Vance Andersen				Approved Signature: 					



Safety Message

Disengagement Procedures

Whenever the intensity of a fire exceeds the ability of the forces to control it, we are left with no alternative but to “disengage” and either wait for better circumstances or change tactics. Whatever happens, it is always safer and more advantageous from an operational perspective if you have a plan for the disengagement. The following items are things to consider in your planning and discussion:

Preplan the disengagement.

Discuss establishing trigger points based on measurable factors such as:

- RH
- Winds
- Fire behavior
- Topographical boundaries
- Time/distance to safety zones
- Loss of support resources (airtankers, helicopters, etc.)
- Other operational considerations (e.g., firefighter fatigue, loss of lookouts or communication)

When disengagement occurs, go through the Risk Management Process (see the Incident Response Pocket Guide):

- Situational Awareness
- Hazard Assessment
- Hazard Controls
- Decision Points
- Evaluate

When disengagement occurs, determine the disengagement type:

- Hold in place—order additional resources or wait for the fire to take its run.
- Change tactics—direct to indirect.
- Pull back—shorten the distance/time to the safety zone.
- Retreat—halt operations and move rapidly to the safety zone.

When disengagement occurs, define reengagement criteria:

- Winds die down
- Fire behavior decreases
- Additional resources arrive
- Fire reaches barriers or fuel breaks
- Tactics are agreed upon and relayed to forces.

Command/Leadership responsibilities resulting from changes in engagement plans include:

- Communicate the changes to your subordinates, as well as to adjacent forces and up the chain of command.
- Account for all your people.
- Make sure everyone follows the disengagement plan.
- Make sure an experienced person with a radio is the last person out during a retreat.
- Use the Risk Management Process (see the Incident Response Pocket Guide) to reassess the situation before reengaging the fire.

Team Safety Officers Leroy Holguin and Mike Smith (t)

Safety is your Responsibility!

Northern Rockies Complex Incident Management Team 5

POST LOGISTICS

Supply and Ordering:

Supply hours 0600 – 2130

NFES cache items are ordered through the Supply Unit

All other items/local purchases are sent to Ordering inbox:

2025_Post_Ordering@firenet.gov

Shower Hours

0500 – 1200 and 1400 - 2200

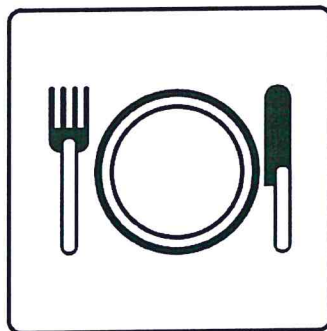


**Weed Wash is located at the Powell Idaho Dept
Transportation yard**

Meal Hours

Breakfast: 0530 – 0930

Dinner: 1800 – 2130





Northern Rockies Chainsaw Parts Order Form

Please see the back page for part order numbers and items requiring an approved Property Loss and Damage form.

Name:	Gen. Msg #:
Resource #:	Request Date:
Contact #:	Need by Date/Time:
TO BE FILLED BY: (circle one):	<input type="checkbox"/> Buying Team <input type="checkbox"/> Home Unit <input type="checkbox"/> Cache

Chainsaw Information

Make (circle one or fill in):	<input type="checkbox"/> Stihl <input type="checkbox"/> Husqvarna <input type="checkbox"/> Other:
Model:	
Serial #	
Bar Length (circle one):	<input type="checkbox"/> 20" <input type="checkbox"/> 24" <input type="checkbox"/> 28" <input type="checkbox"/> 30" <input type="checkbox"/> 32" <input type="checkbox"/> 36" <input type="checkbox"/> Other:

Request:

Part Name and Number	Quantity	Part Name and Number	Quantity

For Sprocket & Chain Orders (circle one or fill in):

# of Drivers:	
Pitch (*):	<input type="checkbox"/> 3/8" <input type="checkbox"/> .325" <input type="checkbox"/> Other:
Gauge:	<input type="checkbox"/> .50 <input type="checkbox"/> .063 <input type="checkbox"/> Other:
Tooth Layout:	<input type="checkbox"/> Full <input type="checkbox"/> Semi-Skip <input type="checkbox"/> Full Skip
Tooth Cut:	<input type="checkbox"/> Chisel <input type="checkbox"/> Semi-Chisel <input type="checkbox"/> Other:
# of Sprocket Teeth:	

☐ Concurrence (Line Supervisor i.e. DIVS): _____

☐ Supply Unit Leader has checked that the items ordered do not need an approved Property Loss & Damage Form, or that the approval is attached. (Supply Unit Leader checks box and initials here: _____).

First source of supply is Cache, shaded blocks indicate items available thru Northern Rockies Cache. Items requiring an approved Property Loss and Damage form are in a separate list at the bottom.												
PART	034/341	360/MS360	MS361	MS362	038/381	044/MS440	MS441	460/MS461	MS462	0640/650	MS660	MS880
Spark Plug (NFES# 000344)	Bosch WSR6F NGK BPMR7A Champion RC16Y	Bosch WSR6F NGK BPMR7A Champion RC16Y	Bosch WSR6F NGK BPMR7A Champion RC16Y	Bosch WSR6F NGK BPMR7A Champion RC16Y	Bosch WSR6F NGK BPMR7A Champion RC16Y	Bosch WSR6F NGK BPMR7A Champion RC16Y	Bosch WSR6F NGK BPMR7A Champion RC16Y	Bosch WSR6F NGK BPMR7A Champion RC16Y	Bosch USR7AC NGK CMR6H	Bosch WSR6F NGK BPMR7A Champion RC16Y	Bosch WSR6F NGK BPMR7A Champion RC16Y	Bosch WSR6F NGK BPMR7A Champion RC16Y
	9512-933-2380	9512-933-2380	9512-933-2380	9512-933-2380	9512-933-3150	9512-933-2380	9512-933-2380	9512-933-2380	9512-933-2380	9512-933-2382	9512-933-2382	9512-933-3170
	0000-958-1022	0000-958-1022	0000-958-1032	0000-958-1032	0000-958-1231	0000-958-1032	0000-958-1032	0000-958-1032	0000-958-1032	0000-958-1032	0000-958-1032	0000-958-1236
	9460-624-0801	9460-624-0801	9460-624-0801	9460-624-0801	9460-624-1001	9460-624-0801	9460-624-0801	9460-624-0801	9460-624-0801	9460-624-0801	9460-624-0801	9460-624-1001
Fuel Filter	0000-350-3504	0000-350-3504	0000-350-3504	0000-350-3504	0000-350-3504	0000-350-3504	0000-350-3504	0000-350-3504	0000-350-3518	0000-350-3504	0000-350-3500	0000-350-3504
Air Filter - HD (NFES# 066756)	1125-120-1626	1125-120-1612 1125-120-1626	1135-120-1600	1140-140-4401 1140-140-4402	1119-120-1611	0000-140-4402	0000-120-1654	0000-120-1654	1142-140-4402	0000-140-4402	0000-140-4402	0000-140-4402
Pre Filter - OEM	N/A	N/A	N/A	N/A	1119-120-1500	0000-141-0300	0000-141-0300	0000-141-0300	N/A	0000-141-0300	0000-141-0300	0000-141-0300
Bar Nut (NFES# 06661)	0000-955-0801	0000-955-0801	0000-955-0801	0000-955-0801	0000-955-0801	0000-955-0801	0000-955-0801	0000-955-0801	0000-955-0803	0000-955-0801	0000-955-0801	0000-955-0903
Inner Slide Plate	1122-664-1000	1122-664-1000	1122-664-1000	1122-664-1000	1119-664-1000	1128-664-1001	1138-664-1000	1128-664-1001	1128-664-1001	1128-664-1001	1128-664-1001	1124-664-1001
STIHL RAPID - Super (RS)												
Chain 3/8"Pitch - .050" GA - DR												
20" - 72 DR	3623-005-0072	3623-005-0072	3623-005-0072	3623-005-0072	3623-005-0072	3623-005-0072	3623-005-0072	3623-005-0072	3623-005-0072	3623-005-0072	3623-005-0072	3623-005-0072
25" - 84 DR (NFES# 006500)	3623-005-0084	3623-005-0084	3623-005-0084	3623-005-0084	3623-005-0084	3623-005-0084	3623-005-0084	3623-005-0084	3623-005-0084	3623-005-0084	3623-005-0084	3623-005-0084
28" - 91 DR	3623-005-0091	3623-005-0091	3623-005-0091	3623-005-0091	3623-005-0091	3623-005-0091	3623-005-0091	3623-005-0091	3623-005-0091	3623-005-0091	3623-005-0091	3623-005-0091
32" - 105 DR	N/A	N/A	N/A	N/A	N/A	3623-005-0105	3623-005-0105	3623-005-0105	3623-005-0105	3623-005-0105	3623-005-0105	3623-005-0105
STIHL RAPID - Super - Full Skip (RSF)												
Chain 3/8"Pitch - .050" GA - DR												
20" - 72 DR	N/A	3676-005-0072	3676-005-0072	3676-005-0072	3676-005-0072	3676-005-0072	3676-005-0072	3676-005-0072	3676-005-0072	3676-005-0072	3676-005-0072	3676-005-0072
25" - 84 DR	3676-005-0084	3676-005-0084	3676-005-0084	3676-005-0084	3676-005-0084	3676-005-0084	3676-005-0084	3676-005-0084	3676-005-0084	3676-005-0084	3676-005-0084	3676-005-0084
28" - 91 DR	3676-005-0091	3676-005-0091	3676-005-0091	3676-005-0091	3676-005-0091	3676-005-0091	3676-005-0091	3676-005-0091	3676-005-0091	3676-005-0091	3676-005-0091	3676-005-0091
32" - 105 DR	N/A	N/A	N/A	N/A	N/A	3676-005-0105	3676-005-0105	3676-005-0105	3676-005-0105	3676-005-0105	3676-005-0105	3676-005-0105
Bar oil: Quantity - Gallon	NFES # 1880											
Bar oil: Quantity - Quart	NFES # 1869											
2 Cycle Oil: Quantity - Quart	NFES # 0341											

The following parts require an approved Property Loss & Damage form prior to ordering:

Guide Bars - 3/8" - .050" GA (STIHL ROLLOMATIC - ES)												
20"	3003-000-8822	3003-000-8822	3003-000-8822	3003-000-8822	3003-000-8822	3003-000-8822	3003-000-8822	3003-000-8822	3003-000-8822	3003-000-8822	3003-000-8822	3003-000-8822
25" (NFES# 066584)	N/A	3003-000-8830	3003-000-8830	3003-000-8830	3003-000-8830	3003-000-8830	3003-000-8830	3003-000-8830	3003-000-8830	3003-000-8830	3003-000-8830	3003-000-8830
28"	N/A	N/A	N/A	N/A	N/A	3003-000-8838	3003-000-8838	3003-000-8838	3003-000-8838	3003-000-8838	3003-000-8838	3003-000-8838
32"	N/A	N/A	N/A	N/A	N/A	3003-000-8846	3003-000-8846	3003-000-8846	3003-000-8846	3003-000-8846	3003-000-8846	3003-000-8846
Rim Sprocket Kit 3/8 - 7T	1125-007-1040	1125-007-1000	1125-007-1000	1135-007-1002	1119-007-1003	1128-007-1000	1128-007-1000	1128-007-1017	1128-007-1000	1122-007-1000	1122-007-1000	N/A
Clutch Drum	Order Sprocket Kit	Order Sprocket Kit	Order Sprocket Kit	Order Sprocket Kit	Order Sprocket Kit	Order Sprocket Kit	Order Sprocket Kit	Order Sprocket Kit	Order Sprocket Kit	Order Sprocket Kit	Order Sprocket Kit	Order Sprocket Kit
Rim Sprocket 3/8 7T (NFES# 066652)	0000-642-1231	0000-642-1023	0000-642-1223	0000-642-1223	0000-642-1223	0000-642-1223	0000-642-1223	0000-642-1223	0000-642-1223	0000-642-1223	0000-642-1223	N/A
Rim sprocket kit 3/8 - 8T	N/A	N/A	1128-007-1001	1128-007-1001	N/A	1128-007-1001	1128-007-1001	1128-007-1001	1128-007-1001	1122-007-1001	1122-007-1001	1124-007-1025
Clutch Drum	Order Sprocket Kit	Order Sprocket Kit	Order Sprocket Kit	Order Sprocket Kit	Order Sprocket Kit	Order Sprocket Kit	Order Sprocket Kit	Order Sprocket Kit	Order Sprocket Kit	Order Sprocket Kit	Order Sprocket Kit	Order Sprocket Kit
Rim Sprocket 3/8 - 8T	N/A	0000-642-1216	0000-642-1216	0000-642-1216	0000-642-1216	0000-642-1216	0000-642-1216	0000-642-1216	0000-642-1216	0000-642-1216	0000-642-1216	0000-642-1216
Clutch	1127-160-2050	1125-160-2005	1128-160-2004	1138-160-2010	1119-160-2000	1128-160-2001	1138-160-2010	1128-160-2004	1142-160-2000	1122-160-2005	1122-160-2002	1124-160-2005
Chain Adjuster Kit	1125-007-1036	1125-007-1021	1125-007-1021	1125-007-1021	1118-664-1600	1125-007-1021	1125-007-1021	1125-007-1021	1125-007-1021	1125-007-1021	1125-007-1021	1124-007-1008
Bump Strip	1121-648-6610	1121-648-6610	1121-648-6610	1121-648-6610	1120-664-1500	1121-648-6610	1121-648-6610	1121-648-6610	1121-648-6610	1121-648-6610	1121-648-6610	1121-648-6610
Starter Rope W/handle	1128-190-3400	1128-190-3400	1128-190-3400	1128-190-3400	1128-190-3400	1128-190-3400	1128-190-3400	1128-190-3400	1128-190-3400	1128-190-3400	1128-190-3400	1128-190-3400
Worm Gear (Oilier)	1125-640-7110	1125-640-7110	1128-640-7112	1128-640-7112	1119-642-1501	1128-640-7112	1128-640-7112	1128-640-7112	1128-640-7112	1122-640-7105	1122-640-7105	1124-640-7512
Manifold Boot	1125-141-2200	1125-141-2200	1135-141-2200	1140-140-2503	1119-140-2500	1128-141-2204	1138-140-2508	1128-141-2204	1142-141-2200	1122-141-2200	1122-141-2201	1124-141-2202

Name & Contact # for Person Placing Order:

ORDER # _____

Line Order

Date & Time Order Was Placed		Location and Time for Delivery (Div/LZ/DP/Lat Long)		Mode of Delivery (Ex: Driven/Helo/DIVS to pickup)	
<div></div>					
<div></div>					
#	Item	Quantity	#	Item	Quantity
1	Meals Breakfast		25	Drip Torch Mix 5gal Mix= 3 1/2gal Diesel : 1 gal Gas	
2	Meals Lunch		26	Line Spike Hygiene Kit	
3	Meals Dinner		27	Backpack Pump	
4	Meals MRE's/case		28	Folding Tank - Size: <div></div>	
5	Water 5 Gal Cubees		29	Pumpkin - Size: <div></div>	
6	Gatorade Case		30	Hose 1 1/2"	
7	Batteries AA Flat		31	Hose 1"	
8	Batteries Specify Type: <div></div>		32	Hose 3/4"	
9	Flagging Rolls		33	Reducer 1 1/2" X 1"	
10	Tarps/Plastic		34	Reducer 1" X 3/4"	
11	Parachute Cord		35	Gated Wye 1 1/2"	
12	Garbage Bags Box		36	Gated Wye 1"	
13	20 Person First Aid Kit		37	Gated Wye 3/4"	
14	Fuel (raw) Diesel 5 Gals		38	Shut Off Valve 3/4"	
15	Fuel (raw) Unleaded 5 Gals		39	In-Line Tee 1 1/2" X 1"	
16	Bar Oil 6 Pack		40	Nozzle 1 1/2" KK	
17	2-cycle oil/pumps Quarts		41	Nozzle 1" Forestry	
18	2-cycle oil/saws		42	Nozzle 3/4" Garden	
19	Tool Shovel		43	Chainsaw Kit	
20	Tool Pulaski		44	Mark 3 Pump w/ Kit (No Fuel) Control# _____	
21	Tool Combi		45	Lightweight Pump w/ Kit (No Fuel) Control# _____	
22	Tool Specify Type: <div></div>				
23	Fusee Case		46	Sprinkler Kit	
24	Drip Torch		47	MISC	
Order Received in Supply by (name):			Time:		
Order Received in Transportation by (name):			Time:		
Order Received in Helibase by (name):			Time:		
Order Shipped to Line Unit by (name):			Time:		

Clear / Reset

Print

Save &/or Submit

DEMOB INSTRUCTIONS

FOR EMERGENCY OR URGENT DEMOBS CONTACT YOUR SUPERVISOR FIRST AND THEN CONTACT THE DEMOB UNIT DIRECTLY AT 307.752.9362

For flights, please contact 2025.post.demob@firenet.gov or call 307.752.9362 72 hours in advance, if possible.

After being notified by your supervisor of your tentative release date:

Step 1. Return all supplies, radios, etc. that were checked out.

Step 2. Return pool NERV rentals; non-Viper vehicles receive inspections.

Step 2. All vehicles that have been on the fire line **MUST** go through weed wash.

Step 3. After you have closed out with Finance, come to Demob to finalize travel or utilize the virtual Demob Release Form with the QR code on the front of the IAP or bottom of this page.

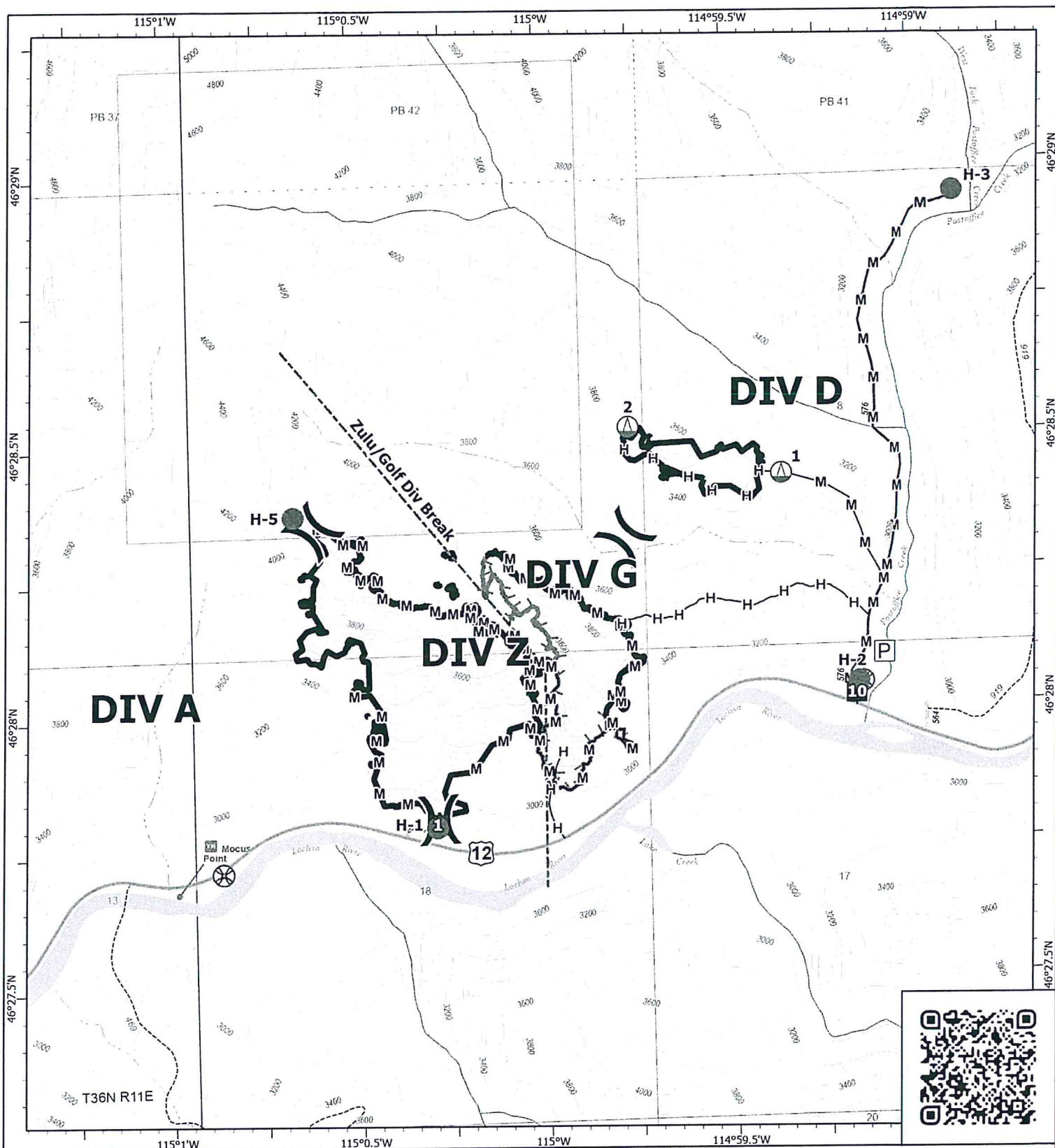
*Any questions about the demob process, call 307.752.9362 or email
2025.post.demob@firenet.gov*



Finance Contact Information:

(208) 867-9570

email: 2025.post.finance@firenet.gov



IAP

Post

IDNCF-000181

06/22/2025 Day

144 acres at 06/19/2025 2130hrs



0 0.13 0.25

Miles

1:18,000 | Team 5 | 6/21/2025 1814
Acres from IR

North American 1983 Datum, Lat/Long Grid



Pump



Helispot



Sling Site



UAS Launch and Recovery



Division Break



Drop Point

H— Completed Hand Line

M— Completed Mixed Construction Line

--- Other

— Contained Fire Edge

— Uncontained Fire Edge



Wildfire Perimeter

Scenic Byway



Primary Highway



Road, Not Maintained for Passenger Car



FS Closed Road



Trail

ACTIVITY LOG (ICS 214)

[illegible]

MEDICAL PLAN (ICS 206)

1. Incident Name: Post Fire		2. Operational Period: Date From: 06/22/25 Time From: 0600		Date To: 06/22/25 Time To: 2200			
3. Air Ambulances:							
Name	Location	Contact Number(s)/Frequency	Paramedics on Site?				
Life Flight Network	MT, ID	911	<input checked="" type="checkbox"/> Yes <input type="checkbox"/> No				
			<input type="checkbox"/> Yes <input type="checkbox"/> No				
			<input type="checkbox"/> Yes <input type="checkbox"/> No				
			<input type="checkbox"/> Yes <input type="checkbox"/> No				
			<input type="checkbox"/> Yes <input type="checkbox"/> No				
			<input type="checkbox"/> Yes <input type="checkbox"/> No				
4. Transportation (indicate air or ground):							
Ambulance Service	Location	Contact Number(s)/Frequency	Level of Service				
MESI	Missoula, MT	911	<input checked="" type="checkbox"/> ALS <input type="checkbox"/> BLS				
Kooskia	Kooskia, ID	911	<input type="checkbox"/> ALS <input checked="" type="checkbox"/> BLS				
			<input type="checkbox"/> ALS <input type="checkbox"/> BLS				
			<input type="checkbox"/> ALS <input type="checkbox"/> BLS				
5. Hospitals:							
Hospital Name	Address, Latitude & Longitude if Helipad	Contact Number(s)/Frequency	Travel Time		Trauma Center	Burn Center	Helipad
			Air	Ground			
ST. Patrick	LAT- N 46-52-31.64	911, MT23	20 min	1.5 hrs	<input checked="" type="checkbox"/> Yes Level: 2	<input type="checkbox"/> Yes <input checked="" type="checkbox"/> No	<input checked="" type="checkbox"/> Yes <input type="checkbox"/> No
Syringa	LAT- N45-56-33.60	911, KGIC		2 hrs	<input type="checkbox"/> Yes Level: _____	<input type="checkbox"/> Yes <input checked="" type="checkbox"/> No	<input type="checkbox"/> Yes <input checked="" type="checkbox"/> No
					<input type="checkbox"/> Yes Level: _____	<input type="checkbox"/> Yes <input type="checkbox"/> No	<input type="checkbox"/> Yes <input type="checkbox"/> No
					<input type="checkbox"/> Yes Level: _____	<input type="checkbox"/> Yes <input type="checkbox"/> No	<input type="checkbox"/> Yes <input type="checkbox"/> No
					<input type="checkbox"/> Yes Level: _____	<input type="checkbox"/> Yes <input type="checkbox"/> No	<input type="checkbox"/> Yes <input type="checkbox"/> No
6. Special Medical Emergency Procedures:							
Due to remote location of incident, severe/critical patients will be transported from fire by helicopter, if possible							
Approved helispot at ICP, N 46-19-81/W 114-42-53							
Please review and follow 8 Line Report							
24/7 contact MEDL Rosemary 406-334-3926, MEDL Ray 602-300-8455							
<input checked="" type="checkbox"/> Check box if aviation assets are utilized for rescue. If assets are used, coordinate with Air Operations.							
7. Prepared by (Medical Unit Leader): Name: /S/ Ray Mines MEDL Signature: _____							
8. Approved by (Safety Officer): Name: /S/ Leroy Holguin SOFC Signature: _____							
ICS 206		IAP Page _____		Date/Time: 06/21/25 1110			

MEDICAL PLAN (ICS 206 WF)

Controlled Unclassified Information//Basic

Medical Incident Report

FOR A NON-EMERGENCY INCIDENT, WORK THROUGH CHAIN OF COMMAND TO REPORT AND TRANSPORT INJURED PERSONNEL AS NECESSARY.

FOR A MEDICAL EMERGENCY: IDENTIFY ON-SCENE INCIDENT COMMANDER BY NAME AND POSITION AND ANNOUNCE "MEDICAL EMERGENCY" TO INITIATE RESPONSE FROM IMT COMMUNICATIONS/DISPATCH.

Use the following items to communicate situation to communications/dispatch.

1. CONTACT COMMUNICATIONS / DISPATCH (Verify correct frequency prior to starting report)

Ex: "Communications, Div. Alpha. Stand-by for Emergency Traffic."

2. INCIDENT STATUS: Provide incident summary (including number of patients) and command structure.

Ex: "Communications, I have a Red priority patient, unconscious, struck by a falling tree. Requesting air ambulance to Forest Road 1 at (Lat./Long.) This will be the Trout Meadow Medical, IC is TFLD Jones. EMT Smith is providing medical care."

Severity of Emergency / Transport Priority	<input type="checkbox"/> RED / PRIORITY 1 Life or limb threatening injury or illness. Evacuation need is IMMEDIATE Ex: Unconscious, difficulty breathing, bleeding severely, 2° – 3° burns more than 4 palm sizes, heat stroke, disoriented. <input type="checkbox"/> YELLOW / PRIORITY 2 Serious Injury or illness. Evacuation may be DELAYED if necessary. Ex: Significant trauma, unable to walk, 2° – 3° burns not more than 1-3 palm sizes. <input type="checkbox"/> GREEN / PRIORITY 3 Minor Injury or illness. Non-Emergency transport Ex: Sprains, strains, minor heat-related illness.
Nature of Injury or Illness & Mechanism of Injury	Brief Summary of Injury or Illness (Ex: Unconscious, Struck by Falling Tree)
Evacuation Request	Air Ambulance / Short Haul/Hoist Ground Ambulance / Other
Patient Location	Descriptive Location & Lat. / Long. (WGS84)
Incident Name	Geographic Name + Medical (Ex: Trout Meadow Medical)
On-Scene Incident Commander	Name of on-scene IC of Incident within an Incident (Ex: TFLD Jones)
Patient Care	Name of Care Provider (Ex: EMT Smith)

3. INITIAL PATIENT ASSESSMENT: Complete this section for each patient as applicable (start with the most severe patient)

Patient Assessment: See IRPG PAGE 106

Treatment:

4. EVACUATION PLAN:

Evacuation Location (if different): (Descriptive Location (drop point, intersection, etc.) or Lat. / Long.) Patient's ETA to Evacuation Location:

Helispot / Extraction Site Size and Hazards:

5. ADDITIONAL RESOURCES / EQUIPMENT NEEDS:

Example: Paramedic/EMT, crews, immobilization devices, AED, oxygen, trauma bag, IV/fluid(s), splints, rope rescue, wheeled litter, HAZMAT, extrication

6. COMMUNICATIONS: Identify State Air/Ground EMS Frequencies and Hospital Contacts as applicable

Function	Channel Name/Number	Receive (RX)	Tone/NAC *	Transmit (TX)	Tone/NAC *
COMMAND					
AIR-TO-GRND					
TACTICAL					

7. CONTINGENCY: Considerations: If primary options fail, what actions can be implemented in conjunction with primary evacuation method? Be thinking ahead..

8. ADDITIONAL INFORMATION: Updates/Changes, etc.

REMEMBER: Confirm ETAs of resources ordered. Act according to your level of training. Be Alert. Keep Calm. Think Clearly. Act Decisively.