

# POST FIRE



## Incident Action Plan

Tuesday, June 24, 2025

Day Operations 0600-2200



For IAP, Maps, Check-in & Demob

*ID-NCF-000181*

*P1S2M8 (0117)*





<b>INCIDENT OBJECTIVES</b>	1. Incident Name Post Fire	2. Date Prepared 6/23/2025	3. Time Prepared 2000
	4. Operational Period Tuesday June 24, 2025 DAY SHIFT 0600-2200		
<b>Intent, Objectives</b>			
<p><u>Commander's Intent</u></p> <p>Success is defined as prioritizing fire fighter safety, minimizing potential impacts/threats to human populations, private land, infrastructure and other identified values by effective risk management and enhanced coordination.</p> <p>Ensure that all incident actions reflect a commitment to aviation, responder and public safety utilizing the risk management process outlined in the IRPG, adherence to the 10 Standard Firefighting Orders, mitigation of the 18 Situations That Shout Watch Out and LCES. If you cannot mitigate a tactical hazard to an acceptable level of risk, do not implement the corresponding tactical action until such time as the risk can be satisfactorily mitigated before re-engaging. Ensure this Commander's Intent is clearly communicated and understood by all resources.</p> <p>Treat all Incident Management personnel, cooperators, contractors and the local public with dignity and respect, creating a "no tolerance" atmosphere for harassment, discrimination, alcohol, or federally prohibited substances.</p> <p><u>Operational Objectives</u></p> <ol style="list-style-type: none"> <li>1. Execute a full suppression strategy utilizing direct, indirect, confine/ contain and mixed tactics to minimize impacts to values at risk and firefighter exposure both in the near- and long-term timeframe of the incident.</li> <li>2. Prevent or minimize fire impacts to these prioritized critical values: Highway 12 corridor, Weir Cr. trail and hot springs area, Forest Service infrastructure (bridges, campgrounds, kiosks, etc.), Ashpile Outfitter Camp, Western Pacific Timber lands, and natural resources (cultural/ heritage sites, aquatic species, etc.).</li> <li>3. Provide Initial Attack within the planning area.</li> <li>4. Consider operational strategies and tactics that minimize impacts to sensitive areas and anadromous fisheries.</li> </ol> <p><u>Management Objectives</u></p> <ol style="list-style-type: none"> <li>1. Provide timely and accurate dissemination of information to fire-adjacent residences and the jurisdictional agencies. Keep these entities informed of management goals, objectives, successes and challenges on the incident.</li> <li>2. Manage and/or mitigate impacts to the identified values at risk as prioritized by the jurisdictional agencies. Operations personnel should coordinate with appropriate READ(s) to document, and, if necessary, coordinate mitigation measures related to threatened and endangered species, cultural sites, and minimize introduction and spread of noxious/exotic weeds and aquatic species.</li> <li>3. Ensure costs related to incident management actions are commensurate with the values at risk.</li> </ol>			
<b>8. ATTACHMENTS (X IF ATTACHED)</b>			
<div style="display: flex; justify-content: space-between;"> <div> <input checked="" type="checkbox"/> ICS 203  <input checked="" type="checkbox"/> ICS 204  <input checked="" type="checkbox"/> ICS 205  <input checked="" type="checkbox"/> ICS 206  <input checked="" type="checkbox"/> ICS 220         </div> <div> <input checked="" type="checkbox"/> Weather Forecast/Fire Behavior Analysis  <input checked="" type="checkbox"/> Safety Message  <input checked="" type="checkbox"/> Finance, Logistics and Demob Messages  <input checked="" type="checkbox"/> 8 Line – Medical Incident Report         </div> </div>			
<b>9. Prepared By (Planning Section Chief)</b>		<b>10. Approved By (Incident Commander)</b>	
Dylan Rader - PSCC ICS 202		Shawn Borgen – ICCI (t)	

## ORGANIZATION ASSIGNMENT LIST (ICS 203)

<b>1. Incident Name:</b>		<b>2. Operational Period:</b>	
POST		Date/Time From: 06/24/2025 0600 TUE	Date/Time To: 06/24/2025 2200 TUE
<b>3. Incident Commander(s) and Command Staff:</b>		PLANNING OPS JT GILMAN (T)	
COMPLEX INCIDENT COMMANDER	JOE SAMPSON SHAWN BORGES (T)	LINE OPS	KEVIN SMITH
DEPUTY	RICK CONNELL	DIVISION/GROUP	A MIKE KING MATT KOSOVICH (T)
INFORMATION OFFICER	JENI GARCIN	DIVISION/GROUP	D SCOTT DRAKE KYLE ERRECART (T)
SAFETY OFFICER	LEROY HOLGUIN MIKE SMITH (T)	DIVISION/GROUP	G LOUIS FLEMING CALEB OLANDER (T)
<b>4. Agency/Organization Representative(s):</b>		DIVISION/GROUP	Z JASON MONROE JEFF ARMSTRONG (T)
Agency/Organization	Name	<b>7b. Air Operations Branch:</b>	
NEZ PERCE-CLEARWATER NF	BRANDON KNAPTON RON TIPTON (T)	AIR OPS BRANCH DIRECTOR	STEVE CROY
RESOURCE ADVISOR	JIM LUTES KAYTI BAUER (T)	AIR SUPPORT SUPERVISOR	JEFF POLACK JEFF QUICK
INCIDENT BUSINESS ADVISOR	ELKA ERIKSON	HELICOPTER MGR	MARK VANDLIK (T)
<b>5. Planning Section:</b>		<b>8. Finance/Administration Section:</b>	
CHIEF	DYLAN RADER	CHIEF	BIDDY SIMET
SITUATION UNIT	LAILA LIENESCH (VIRTUAL)	TIME UNIT	ANNA LOWELL
RESOURCES/DEMOB UNIT	GAYLE LAURENT	COMP/CLAIMS UNIT	JENNIFER HEBBELER (T)
DOCUMENTATION UNIT	SPENCER POLLOCK (VIRTUAL)	COST UNIT	CHELSEA MONKS
FIRE BEHAVIOR ANALYST	MIKE PAGOAGA	PROCUREMENT UNIT	STEW WILLIAMS (T)
GIS SPECIALIST	BRIAN GARDNER		
TECHNOLOGY SUPPORT SPECIALIST	MARY SIMONIS, SUE ROSE		
INCIDENT METEOROLOGIST	TRENT SMITH		
LONG TERM ANALYST	JON RIECK		
<b>6. Logistics Section:</b>			
CHIEF	PETER PAPPAS		
DEPUTY	BILL LAUER; JEREMIAH GREENE		
SUPPLY UNIT	DAVE COOPER		
FACILITIES UNIT	PAT NELSON		
GROUND SUPPORT UNIT	BRAD EMRICK		
COMMUNICATIONS UNIT	DALTON BLACK VANCE ANDERSEN		
MEDICAL UNIT	ROSEMARY MYERS, RAY MINES SADE GALLOWAY (T)		
SECURITY UNIT	BILL HITT		
FOOD UNIT	JUSTIN TRODICK		
ORDERING MANAGER	DARCY WHEELER LYNDA MURPHY (T)		
<b>7. Operations Section:</b>			
PLANNING OPS	ASHLEY SITES		
<b>9. Prepared By:</b>		<b>Signature:</b>	
Name:	GAYLE LAURENT	Position/Title:	RESL/DMOB
ICS 203	IAP Page	Date/Time:	06/23/2025 2000



## Fire Weather Forecast



**FORECAST NO:** 11

**PREDICTION FOR:** Tuesday-Wednesday

**SHIFT DATE:** Tuesday 06/24/2025

**TIME AND DATE ISSUED:** 06/23/2025 1900 hrs

**INCIDENT:** Post Fire

**UNIT:** Clearwater NF

**SIGNED:** Trent Smith *Trent R. Smith*

Incident Meteorologist (IMET)

---

**Discussion:** A transitory ridge slides over the area causing warm and dry conditions. A few fair weather cumulus is expected to develop during the afternoon indicating decent instability. The upper level flow becomes southwesterly on Wednesday increasing the clouds and potential for afternoon storms.

### **WEATHER FORECAST FOR TODAY:**

**Sky/Weather:** Mostly sunny.

**Max Temperature:** Bottom: 77-82, Top: 72-77.

**Min RH:** 20-25 percent.

**20 ft Winds:**

**Lower Valleys:** Terrain driven 2-5 mph becoming west 5-10 mph in the afternoon.

**Mid-slopes and Ridges:** Terrain driven 2-8 mph becoming west 5-10 mph gusts to 15 mph in the afternoon.

**Transport Wind:** W 9 mph.

**Inversion:** 500 ft lifting to 10000 ft MSL by 1500 PDT.

### **TONIGHT:**

**Sky/Weather:** Mostly clear becoming partly cloudy after midnight.

**Min Temperature:** 48-53.

**Max RH:** 61-66 percent.

**20 ft Winds:**

**Valleys/Lower Slopes:** West 5-10 mph becoming terrain driven 2-6 mph after sunset.

**Ridges:** West 5-10 mph becoming terrain driven 3-8 mph after midnight.

**Inversion:** Developing after 2100 near 500 ft.

### **WEDNESDAY:**

**Sky/Weather:** Partly cloudy. 20% chance of rain showers and 10% chance of thunderstorms in the afternoon.

**Max Temperature:** Bottom: 76-81, Top: 70-75.

**Min RH:** 25-30 percent.

**20 ft Winds:**

**Lower Valleys:** Terrain driven 2-8 mph becoming west 5-10 mph gusts to 15 mph in the afternoon.

**Mid-slopes and Ridges:** Terrain driven 3-8 mph becoming west 5-10 mph gusts to 20 mph in the afternoon.

**Transport Wind:** SW 20 mph. **Inversion:** Increasing to 10500 ft MSL by 1500 PDT.

---

Weather observations can be texted to 406-360-6330 or emailed to [trent.smith@noaa.gov](mailto:trent.smith@noaa.gov)

## FIRE BEHAVIOR FORECAST

**FORECAST NUMBER:** 10

**TYPE OF FIRE:** Wildland Fire

**FIRE NAME:** POST

**OPERATIONAL PERIOD:** Tuesday, 06/24/2025

**DATE ISSUED:** June 23, 2025

**TIME ISSUED:** 1900

**UNIT:** ID-NCF

**SIGNED:** Mike Pagoaga - FBAN

### WEATHER

**MAX Temp:** 77-82 **MIN Rh:** 20-25%

**Wind:** Terrain driven shifting to west and increasing 5-10,  
gusts up to 15

*Local Weather Thresholds that shout **WATCH OUT**  
Temperatures above 85°, Relative Humidity below 20%,  
20' winds above 5 mph*

### FUELS

Predominant fuels are traditional high load, timber understory (TU5), and moderate load, timber understory (TU2) in continuous mixed conifer.

While fuels have slightly recovered following recent precipitation, historical patterns suggest this improvement is temporary. If fire weather conditions resume, fuels are likely to return to critical thresholds within a week.

### FIRE BEHAVIOR

#### General Fire Behavior

Hotter and dryer weather for the first time since the rain event. If any additional heat is out there it will show today. 100-hr and 1000-hr fuels will take more time to become receptive to increased fire activity.

*ERC: Less than 44%  
Fine Dead Fuel Moisture: 7%  
100-hr: 22% 1000-hr: 17%  
Probability of Ignition less than 50%*

#### Specific Fire Behavior

**All Divisions:** Minimal fire activity can be expected. Soldering will continue in sheltered areas, in areas of heavy fuel accumulations or stumps. These are well interior and pose very little risk to primary values or containment.

### SAFETY

Take a step back occasionally—avoid routine thinking in a dynamic fire environment



# Safety Message

## TRANSITION

Risks to fireline personnel increase significantly during transition periods regardless of the size or complexity of the incident. Many fatalities, serious injuries or incidents with potential have occurred during transition periods. Be proactive in mitigating the risks by proper implementation of LCES—Lookout, Communications, Escape Routes, and Safety Zones.

- Factors for increased risks to fireline personnel during transition periods include:
  - No, or poor, briefing of incoming personnel
  - Lack of fire weather and behavior information, both forecast and observed
  - Communications: face-to-face briefings may not be possible and radio frequencies may be overextended and/or changing due to the increased demands on the system.
  - Initial attack resources may not have checked-in and the Incident Commander may not be aware of the number, type and location of all resources.
  - Location of safety zones and escape routes may not be known and communicated to all resources.
- Mitigation actions to take:
  - Lookouts: Post and maintain your own lookouts.
  - Communications: Maintain existing communications with your own and adjacent resources, as well as your original supervisor, while you are developing communications with incoming adjacent resources and your new supervisor.
  - Escape routes and safety zones: Identify escape routes and assure incoming resources are aware of their locations; be aware that your original escape routes and safety zones may no longer be accessible due to changing fire behavior or your increased distance from them.

**Team Safety Officers: Adam Carr, Leroy Holguin  
Mike Smith (t)**

**Safety is your Responsibility!**

**Northern Rockies Complex Incident Management Team 5**

# **Division/Group Assignment List (ICS 204 WF)** Controlled Unclassified Information//Basic

<b>1. Incident Name:</b>				<b>3.</b>		
POST				<b>Branch:</b>	<b>Division/Group:</b>  A/Z	
<b>2. Operational Period:</b>						
Date/Time From: 06/24/2025 0600 TUE		Date/Time To: 06/24/2025 2200 TUE				
<b>4. Operations Personnel</b>						
<b>OPERATIONS CHIEF PLANNING</b>		ASHLEY SITES JT GILMAN (T)		<b>OPERATIONS CHIEF LINE</b>		KEVIN SMITH
<b>DIVISION/GROUP SUPERVISOR</b>		MIKE KING MATTHEW KOSOVICH (T)				
<b>5. Resources Assigned this Period</b>						
Strike Team / Task Force / Resource Designator	LWD	Leader	Number Persons	Drop Off PT./Time	Pick Up PT./Time	
E-12 FNF - ENGINE 682	06/28	CLINTON DEAN	8			
O-24 EMPF BEST PRACTICE MEDICINE LLC	06/28	TREVOR LEARY	1			
E-16 AMBO 2 AERIE BACKCOUNTRY A03397	06/28	TRENTON HARPER	2			
O-10.72 SOFR KEVIN PFISTER	06/27		1			
<b>6. Control Operations/Work Assignments:</b>						
Task: Patrol and mop up sufficiently to prevent further spread.						
Purpose: Minimize fire spread to the South to protect Highway 12 corridor						
End state: Fire perimeter is secured and Highway 12 corridor is not impacted. Snags are removed that could impact the Highway and public visitors.						
<b>7. Special Instructions:</b>						
Utilize mixed handline/cold trailing tactics where appropriate.						
<b>8. Division/Group Communication Summary</b>						
Function	Channel	RX Frequency N/W	RX Tone/NAC	TX Frequency N/W	TX Tone/NAC	Mode
COMMAND	3	171.5750		166.2625	156.7	A
TACTICAL	11	169.1250		169.1250		A
AIR TO GROUND	10	167.9875		167.9875		A
<b>9. Prepared By (Resource Unit Leader)</b>		<b>Approved By (Planning Section Chief)</b>		<b>Date</b>		<b>Time</b>
GAYLE LAURENT		DYLAN RADER		06/23/2025		2000

# Division/Group Assignment List (ICS 204 WF)

Controlled Unclassified Information//Basic

<b>1. Incident Name:</b>				<b>3.</b>			
POST				Branch:		Division/Group:	
<b>2. Operational Period:</b>						D	
Date/Time From: 06/24/2025 0600      TUE		Date/Time To: 06/24/2025 2200      TUE					
<b>4. Operations Personnel</b>							
<b>OPERATIONS CHIEF PLANNING</b>		ASHLEY SITES JT GILMAN (T)		<b>OPERATIONS CHIEF LINE</b>		KEVIN SMITH	
<b>DIVISION/GROUP SUPERVISOR</b>		SCOTT DRAKE KYLE ERRECART (T)					
<b>5. Resources Assigned this Period</b>							
Strike Team / Task Force / Resource Designator	LWD	Leader	Number Persons	Drop Off PT./Time	Pick Up PT./Time		
C-1 TRAPPER CREEK HC2IA	06/24	NAT SUPOLA	22				
O-53 SOFF JORDAN FRANCOM	06/25		1				
O-10.6 SOFC ADAM CARR	06/25		1				
O-25 EMPF BEST PRACTICE MEDICINE	06/28	SAM HILL	1				
<b>6. Control Operations/Work Assignments:</b>							
Task: Continue to patrol and monitor for any hot spots in and around Delta spot fire.							
Purpose: Minimize fire's spread to the east to protect Highway 12 corridor. Provide contingency holding options to be utilized if current primary plan is unsuccessful.							
End state: No additional fire spread from spot fire							
<b>7. Special Instructions:</b>							
<i>Meeting location for incoming resources is DP 10</i>							
<b>8. Division/Group Communication Summary</b>							
Function	Channel	RX Frequency N/W	RX Tone/NAC	TX Frequency N/W	TX Tone/NAC	Mode	
COMMAND	3	171.5750		166.2625	156.7	A	
TACTICAL	12	166.5625		166.5625		A	
AIR TO GROUND	10	167.9875		167.9875		A	
<b>9. Prepared By (Resource Unit Leader)</b>			<b>Approved By (Planning Section Chief)</b>		<b>Date</b>	<b>Time</b>	
GAYLE LAURENT			DYLAN RADER		06/23/2025	1042	

**Division/Group Assignment List (ICS 204 WF)**  
Controlled Unclassified Information//Basic

<b>1. Incident Name:</b>				<b>3.</b>			
POST				Branch:		Division/Group:  G	
<b>2. Operational Period:</b>							
Date/Time From: 06/24/2025 0600 TUE		Date/Time To: 06/24/2025 2200 TUE					
<b>4. Operations Personnel</b>							
OPERATIONS CHIEF PLANNING		ASHLEY SITES JT GILMAN (T)		OPERATIONS CHIEF LINE		KEVIN SMITH	
DIVISION/GROUP SUPERVISOR		LOUIS FLEMING CALEB OLANDER (T)					
<b>5. Resources Assigned this Period</b>							
Strike Team / Task Force / Resource Designator		LWD	Leader	Number Persons	Drop Off PT./Time	Pick Up PT./Time	
O-31 WFM1 SELWAY		06/29	JT SOHR	11			
O-10.71 TFLD RYAN WILLIAMS		06/29		1			
O-40 TFLD (T) JONATHON FUENTES		06/29		1			
E-3 AMBO1 BEST PRACTICE MEDICINE		06/25	MISTY BAUER; ETHAN BIEDERMANN	2			
<b>6. Control Operations/Work Assignments:</b>							
Task: Patrol and mop up sufficiently to prevent further spread.							
Purpose: Contain fire to current footprint to protect Highway 12 corridor.							
End state: Keep fire north of Highway 12 and west of Post Office Creek. Minimize impacts to the Highway 12 corridor.							
<b>7. Special Instructions:</b>							
<i>Evaluate all areas for snags and watch out for green trees falling. Utilize mixed handline/cold trailing tactics when appropriate.</i>							
<b>8. Division/Group Communication Summary</b>							
Function	Channel	RX Frequency N/W	RX Tone/NAC	TX Frequency N/W	TX Tone/NAC	Mode	
COMMAND	3	171.5750		166.2625	156.7	A	
TACTICAL	12	166.5625		166.5625		A	
AIR TO GROUND	10	167.9875		167.9875		A	
<b>9. Prepared By (Resource Unit Leader)</b>			<b>Approved By (Planning Section Chief)</b>		<b>Date</b>		<b>Time</b>
GAYLE LAURENT			DYLAN RADER		06/23/2025		1042



INCIDENT RADIO COMMUNICATIONS PLAN				Incident Name Post		Date/Time Prepared 6/22/25		Operational Period Date/Time 6/23/25 Thru 6/28/25 0600 - 2200			
Ch #	Function	Channel Name/Trunked Radio System Talkgroup	Assignment	RX Freq	N or W	RX Tone/NAC	TX Freq	N or W	TX Tone/NAC	Mode A, D or M	Remarks
1	Dispatch	CLW-E Beaver Ridge		171.5750			166.2625		100.0	A	
2	Dispatch	CLW-E Diablo		171.5750			166.2625		151.4	A	
3	Command	CLW-E Bear Mt	Command	171.5750			166.2625		156.7	A	Coverage from Fire
4	Command	CLW-E Rocky Pt	Command	171.5750			166.2625		162.2	A	Coverage from ICP
5	Dispatch	CLW-N Osier		170.5000			165.0125		100.0	A	
6	Dispatch	CLW-S Coolwater		172.2250			165.7000		151.4	A	
7	Dispatch	CLW-S Castle Bt		172.2250			165.7000		156.7	A	
8	Dispatch	ICSO Rocky Pt		154.1150			156.0150		186.2	A	
9	Dispatch	ICSO Castle Bt		154.1150			156.0150		88.5	A	
10	A/G	NCF A/G 17	A/G	167.9875			167.9875			A	
11	Tactical	Fire Tac 1	Div A/Z	169.1250			169.1250			A	
12	Tactical	Fire Tac 2	Div D/G	166.5625			166.5625			A	
13	MED	EMS 2		155.2800			155.2800		156.7	A	IWI Grangeville
14	Local	COM USE 1		163.7125			163.7125			A	
15	Local	COM USE 2		168.6125			168.6125			A	IWI
16	AirGuard	Air Guard	AIRGUARD	168.6250			168.6250		110.9	A	Emergency Use Only
Prepared by (Communications Unit) Vance Andersen COM1				Incident Location Powell, ID		County		State		Latitude N Longitude W	

*Peter Andersen* LSCC

The convention calls for frequency lists to show four digits after the decimal place, followed by either an "N" or a "W", depending on whether the frequency is narrow or wide band. Mode refers to either "A" or "D" indicating analog or digital (e.g. Project 25) or "M" indicating mixed mode. All channels are shown as if programmed in a control station, mobile or portable radio. Repeater and base stations must be programmed with the Rx and Tx reversed.

# **POST LOGISTICS**

## **Supply and Ordering:**

Supply hours 0600 – 2130

NFES cache items are ordered through the Supply Unit

All other items/local purchases are sent to Ordering inbox:

*2025\_Post\_Ordering@firenet.gov*

## **Shower Hours**

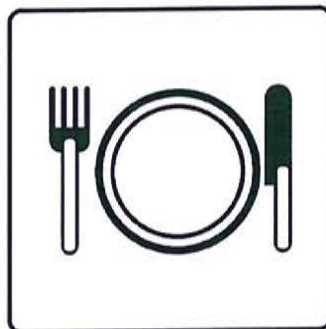
0500 – 1130



**Weed Wash is located at the Powell Idaho Dept  
Transportation yard**

## **Meal Hours**

Breakfast: 0530 – 0930 (Last meal)



## DEMOB INSTRUCTIONS

FOR EMERGENCY OR URGENT DEMOBS CONTACT YOUR SUPERVISOR FIRST AND THEN CONTACT THE DEMOB UNIT DIRECTLY AT 307.752.9362

For flights, please contact 2025.post.demob@firenet.gov or call 307.752.9362 72 hours in advance, if possible.

After being notified by your supervisor of your tentative release date:

Step 1. Return all supplies, radios, etc. that were checked out.

Step 2. Return pool NERV rentals; non-Viper vehicles receive inspections.

Step 2. All vehicles that have been on the fire line **MUST** go through weed wash.

Step 3. After you have closed out with Finance, come to Demob to finalize travel or utilize the virtual Demob Release Form with the QR code on the front of the IAP or bottom of this page.

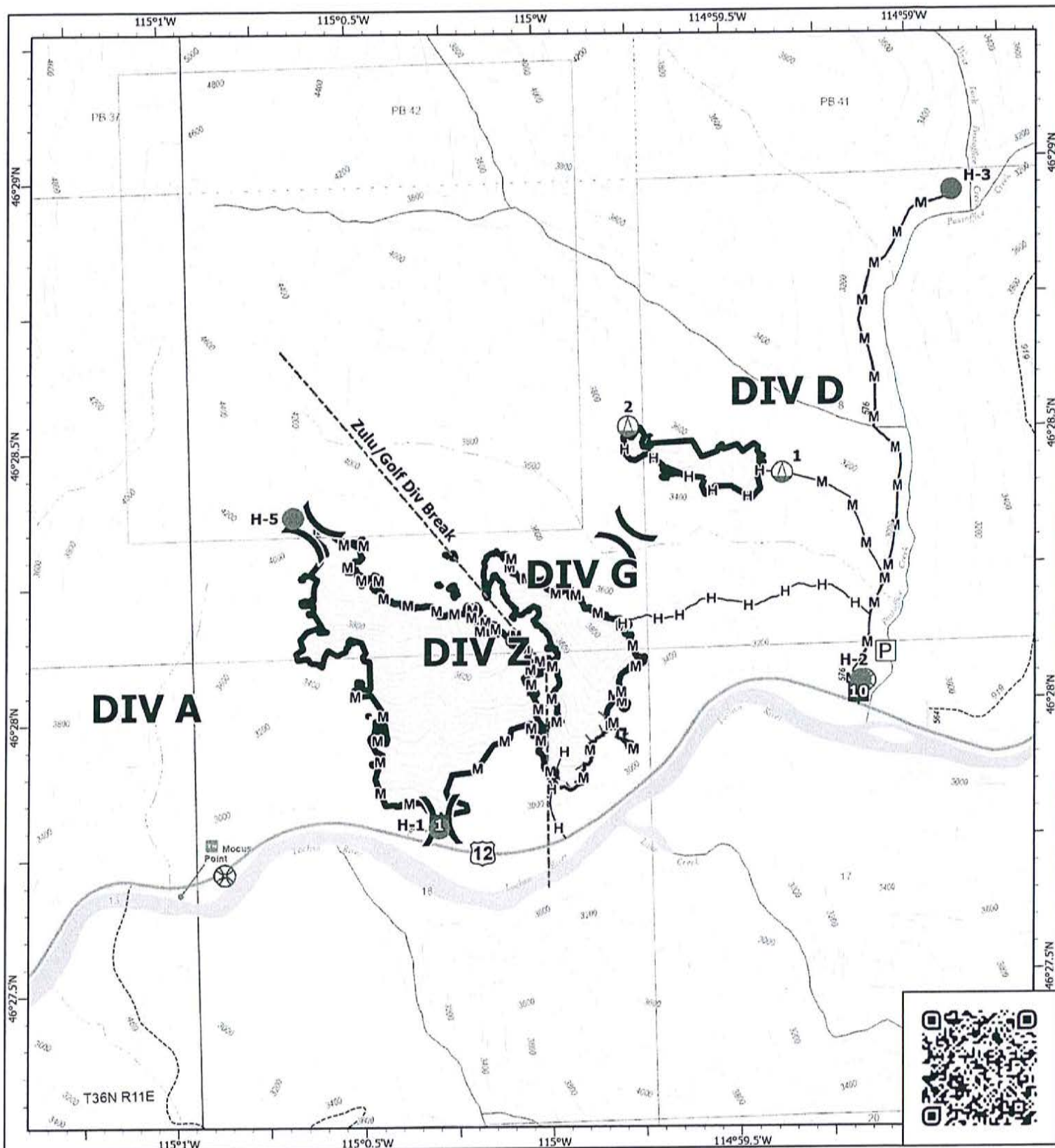
*Any questions about the demob process, call 307.752.9362 or email  
2025.post.demob@firenet.gov*



**Finance Contact Information:**

**(208) 867-9570**

**email: 2025.post.finance@firenet.gov**



**IAP**

Post

IDNCF-000181

06/24/2025 Day

144 acres at 06/19/2025 2130hrs



0 0.13 0.25

Miles

1:18,000 | Team 5 | 6/23/2025 1810

Acres from IR

North American 1983 Datum Lat/Long Grid



Pump



Helipod



Sling Site



UAS Launch and Recovery



Division Break



Drop Point

H— Completed Hand Line

M— Completed Mixed Construction Line

--- Other

— Contained Fire Edge

— Uncontained Fire Edge



Wildfire Perimeter

Scenic Byway



Primary Highway



Road, Not Maintained for Passenger Car



FS Closed Road



Trail

## ACTIVITY LOG (ICS 214)

[illegible]

## MEDICAL PLAN (ICS 206)

<b>1. Incident Name:</b> Post Fire		<b>2. Operational Period:</b> Date From: 06/24/25 Time From: 0600		Date To: 06/24/25 Time To: 2200			
<b>3. Air Ambulances:</b>							
Name	Location	Contact Number(s)/Frequency	Paramedics on Site?				
Life Flight Network	MT, ID	911	<input checked="" type="checkbox"/> Yes <input type="checkbox"/> No				
			<input type="checkbox"/> Yes <input type="checkbox"/> No				
			<input type="checkbox"/> Yes <input type="checkbox"/> No				
			<input type="checkbox"/> Yes <input type="checkbox"/> No				
			<input type="checkbox"/> Yes <input type="checkbox"/> No				
			<input type="checkbox"/> Yes <input type="checkbox"/> No				
<b>4. Transportation (indicate air or ground):</b>							
Ambulance Service	Location	Contact Number(s)/Frequency	Level of Service				
MESI	Missoula, MT	911	<input checked="" type="checkbox"/> ALS <input type="checkbox"/> BLS				
Kooskia	Kooskia, ID	911	<input type="checkbox"/> ALS <input checked="" type="checkbox"/> BLS				
			<input type="checkbox"/> ALS <input type="checkbox"/> BLS				
			<input type="checkbox"/> ALS <input type="checkbox"/> BLS				
<b>5. Hospitals:</b>							
Hospital Name	Address, Latitude & Longitude if Helipad	Contact Number(s)/Frequency	Travel Time		Trauma Center	Burn Center	Helipad
			Air	Ground			
ST. Patrick Missoula, MT	LAT- N 46-52-31.64 LONG- W 113-59-59.19	911, MT23	20 min	1.5 hrs	<input checked="" type="checkbox"/> Yes Level: 2	<input type="checkbox"/> Yes <input checked="" type="checkbox"/> No	<input checked="" type="checkbox"/> Yes <input type="checkbox"/> No
Syringa General Grangeville, ID	LAT- N45-56-33.60 LONG- W116-07-22.90	911, KGIC		2 hrs	<input type="checkbox"/> Yes Level: _____	<input type="checkbox"/> Yes <input checked="" type="checkbox"/> No	<input type="checkbox"/> Yes <input checked="" type="checkbox"/> No
					<input type="checkbox"/> Yes Level: _____	<input type="checkbox"/> Yes <input type="checkbox"/> No	<input type="checkbox"/> Yes <input type="checkbox"/> No
					<input type="checkbox"/> Yes Level: _____	<input type="checkbox"/> Yes <input type="checkbox"/> No	<input type="checkbox"/> Yes <input type="checkbox"/> No
					<input type="checkbox"/> Yes Level: _____	<input type="checkbox"/> Yes <input type="checkbox"/> No	<input type="checkbox"/> Yes <input type="checkbox"/> No
<b>6. Special Medical Emergency Procedures:</b>							
Due to remote location of incident, severe/critical patients will be transported from fire by helicopter, if possible							
Approved helispot at ICP, N 46-19-81/W 114-42-53							
Please review and follow 8 Line Report							
24/7 contact MEDL Rosemary 406-334-3926, MEDL Ray 602-300-8455							
<input checked="" type="checkbox"/> Check box if aviation assets are utilized for rescue. If assets are used, coordinate with Air Operations.							
<b>7. Prepared by (Medical Unit Leader):</b> Name: /S/Ray Mines MEDL Signature: _____							
<b>8. Approved by (Safety Officer):</b> Name: /S/ Leroy Holguin SOFC Signature: _____							
ICS 206		IAP Page _____		Date/Time: 06/23/25 1117			

# MEDICAL PLAN (ICS 206 WF)

Controlled Unclassified Information//Basic

Medical Incident Report					
FOR A NON-EMERGENCY INCIDENT, WORK THROUGH CHAIN OF COMMAND TO REPORT AND TRANSPORT INJURED PERSONNEL AS NECESSARY.					
FOR A MEDICAL EMERGENCY: IDENTIFY ON-SCENE INCIDENT COMMANDER BY NAME AND POSITION AND ANNOUNCE "MEDICAL EMERGENCY" TO INITIATE RESPONSE FROM IMT COMMUNICATIONS/DISPATCH.					
Use the following items to communicate situation to communications/dispatch.					
<b>1. CONTACT COMMUNICATIONS / DISPATCH</b> (Verify correct frequency prior to starting report) Ex: "Communications, Div. Alpha. Stand-by for Emergency Traffic."					
<b>2. INCIDENT STATUS:</b> Provide incident summary (including number of patients) and command structure. Ex: "Communications, I have a Red priority patient, unconscious, struck by a falling tree. Requesting air ambulance to Forest Road 1 at (Lat./Long.) This will be the Trout Meadow Medical, IC is TFLD Jones. EMT Smith is providing medical care."					
Severity of Emergency / Transport Priority	<input type="checkbox"/> <b>RED / PRIORITY 1</b> Life or limb threatening injury or illness. Evacuation need is <b>IMMEDIATE</b> Ex: Unconscious, difficulty breathing, bleeding severely, 2° – 3° burns more than 4 palm sizes, heat stroke, disoriented. <input type="checkbox"/> <b>YELLOW / PRIORITY 2</b> Serious Injury or illness. Evacuation may be <b>DELAYED</b> if necessary. Ex: Significant trauma, unable to walk, 2° – 3° burns not more than 1-3 palm sizes. <input type="checkbox"/> <b>GREEN / PRIORITY 3</b> Minor Injury or illness. Non-Emergency transport Ex: Sprains, strains, minor heat-related illness.				
Nature of Injury or Illness & Mechanism of Injury			Brief Summary of Injury or Illness (Ex: Unconscious, Struck by Falling Tree)		
Evacuation Request			Air Ambulance / Short Haul/Hoist Ground Ambulance / Other		
Patient Location			Descriptive Location & Lat. / Long. (WGS84)		
Incident Name			Geographic Name + Medical (Ex: Trout Meadow Medical)		
On-Scene Incident Commander			Name of on-scene IC of Incident within an Incident (Ex: TFLD Jones)		
Patient Care			Name of Care Provider (Ex: EMT Smith)		
<b>3. INITIAL PATIENT ASSESSMENT:</b> Complete this section for each patient as applicable (start with the most severe patient)					
Patient Assessment: See IRPG PAGE 106					
Treatment:					
<b>4. EVACUATION PLAN:</b>					
Evacuation Location (if different): (Descriptive Location (drop point, intersection, etc.) or Lat. / Long.) Patient's ETA to Evacuation Location:					
Helispot / Extraction Site Size and Hazards:					
<b>5. ADDITIONAL RESOURCES / EQUIPMENT NEEDS:</b>					
Example: Paramedic/EMT, crews, immobilization devices, AED, oxygen, trauma bag, IV/fluid(s), splints, rope rescue, wheeled litter, HAZMAT, extrication					
<b>6. COMMUNICATIONS: Identify State Air/Ground EMS Frequencies and Hospital Contacts as applicable</b>					
Function	Channel Name/Number	Receive (RX)	Tone/NAC *	Transmit (TX)	Tone/NAC *
COMMAND					
AIR-TO-GRND					
TACTICAL					
<b>7. CONTINGENCY:</b> <u>Considerations:</u> If primary options fail, what actions can be implemented in conjunction with primary evacuation method? Be thinking ahead..					
<b>8. ADDITIONAL INFORMATION:</b> Updates/Changes, etc.					
<b>REMEMBER:</b> Confirm ETAs of resources ordered. Act according to your level of training. Be Alert. Keep Calm. Think Clearly. Act Decisively.					