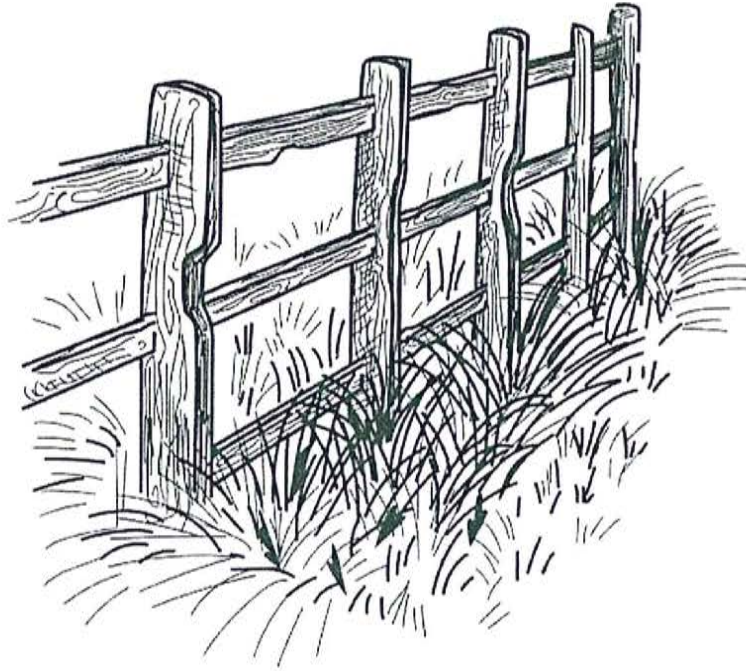


POST FIRE



Incident Action Plan

June 25 - 27, 2025

Wednesday - Friday

Day Operations 0600-2200



For IAP, Maps

ID-NCF-000181

P1S2M8 (0117)

INCIDENT OBJECTIVES	1. Incident Name Post Fire	2. Date Prepared 6/23/2025	3. Time Prepared 2000
	4. Operational Period Wednesday – Friday, June 24 - 27, 2025 DAY SHIFT 0600-2200		
Intent, Objectives			
<p><u>Commander's Intent</u></p> <p>Success is defined as prioritizing fire fighter safety, minimizing potential impacts/threats to human populations, private land, infrastructure and other identified values by effective risk management and enhanced coordination.</p> <p>Ensure that all incident actions reflect a commitment to aviation, responder and public safety utilizing the risk management process outlined in the IRPG, adherence to the 10 Standard Firefighting Orders, mitigation of the 18 Situations That Shout Watch Out and LCES. If you cannot mitigate a tactical hazard to an acceptable level of risk, do not implement the corresponding tactical action until such time as the risk can be satisfactorily mitigated before re-engaging. Ensure this Commander's Intent is clearly communicated and understood by all resources.</p> <p>Treat all Incident Management personnel, cooperators, contractors and the local public with dignity and respect, creating a "no tolerance" atmosphere for harassment, discrimination, alcohol, or federally prohibited substances.</p> <p><u>Operational Objectives</u></p> <ol style="list-style-type: none"> 1. Execute a full suppression strategy utilizing direct, indirect, confine/ contain and mixed tactics to minimize impacts to values at risk and firefighter exposure both in the near- and long-term timeframe of the incident. 2. Prevent or minimize fire impacts to these prioritized critical values: Highway 12 corridor, Weir Cr. trail and hot springs area, Forest Service infrastructure (bridges, campgrounds, kiosks, etc.), Ashpile Outfitter Camp, Western Pacific Timber lands, and natural resources (cultural/ heritage sites, aquatic species, etc.). 3. Provide Initial Attack within the planning area. 4. Consider operational strategies and tactics that minimize impacts to sensitive areas and anadromous fisheries. <p><u>Management Objectives</u></p> <ol style="list-style-type: none"> 1. Provide timely and accurate dissemination of information to fire-adjacent residences and the jurisdictional agencies. Keep these entities informed of management goals, objectives, successes and challenges on the incident. 2. Manage and/or mitigate impacts to the identified values at risk as prioritized by the jurisdictional agencies. Operations personnel should coordinate with appropriate READ(s) to document, and, if necessary, coordinate mitigation measures related to threatened and endangered species, cultural sites, and minimize introduction and spread of noxious/exotic weeds and aquatic species. 3. Ensure costs related to incident management actions are commensurate with the values at risk. 			
8. ATTACHMENTS (X IF ATTACHED)			
<input checked="" type="checkbox"/> ICS 203 <input checked="" type="checkbox"/> ICS 204 <input checked="" type="checkbox"/> ICS 205 <input checked="" type="checkbox"/> ICS 206 <input checked="" type="checkbox"/> ICS 220		<input checked="" type="checkbox"/> Weather Forecast/Fire Behavior Analysis <input checked="" type="checkbox"/> Safety Message <input checked="" type="checkbox"/> Finance <input checked="" type="checkbox"/> 8 Line – Medical Incident Report	
9. Prepared By (Planning Section Chief)		10. Approved By (Incident Commander)	
Dylan Rader - PSCC ICS 202			



Fire Weather Forecast



FORECAST NO: 12

PREDICTION FOR: Wednesday-Friday

SHIFT DATE: Wednesday 06/25/2025

TIME AND DATE ISSUED: 06/23/2025 1900 hrs

INCIDENT: Post Fire

UNIT: Clearwater NF

SIGNED: Trent Smith *Trent R. Smith*

Incident Meteorologist (IMET)

Discussion: The upper level flow will become southwesterly on Wednesday keeping temperatures warm with low humidity readings. A few showers and potentially a thunderstorm is expected to develop near the fire's location during Wednesday afternoon. A weak low pressure system moves through the region Wednesday night through Thursday night causing increased clouds, slightly cooler temperatures, higher humidity and scattered rain. For updated weather forecasts request spot weather forecasts or call the National Weather Service in Missoula, MT 406-329-4718.

WEATHER FORECAST FOR WEDNESDAY:

Sky/Weather: Partly cloudy. 20% chance of rain showers and 10% chance of thunderstorms in the afternoon.

Max Temperature: Bottom: 76-81, Top: 70-75.

Min RH: 25-30 percent.

20 ft Winds:

Lower Valleys: Terrain driven 2-8 mph becoming west 5-10 mph gusts to 15 mph in the afternoon.

Mid-slopes and Ridges: Terrain driven 3-8 mph becoming west 5-10 mph gusts to 20 mph in the afternoon.

Transport Wind: SW 20 mph **Inversion:** Increasing to 10500 ft MSL by 1500 PDT.

WEDNESDAY NIGHT:

Sky/Weather: Mostly cloudy. 20% chance of rain showers. 10% chance of thunderstorms in the evening.

Min Temperature: 49-54.

Max RH: 65-70 percent.

20 ft Winds:

Valleys/Lower Slopes: West 5-10 mph becoming terrain driven 2-6 mph after sunset.

Ridges: West 5-10 mph becoming terrain driven 3-8 mph after midnight.

Inversion: Developing after 2100 near 1000 ft.

THURSDAY:

Sky/Weather: Mostly cloudy. 30% chance of rain showers and 20% chance of thunderstorms in the afternoon.

Max Temperature: Bottom: 71-76, Top: 64-69.

Min RH: 35-40 percent.

20 ft Winds:

Lower Valleys: Terrain driven 2-8 mph becoming west 5-10 mph in the afternoon.

Mid-slopes and Ridges: Terrain driven 3-8 mph becoming west 5-10 mph gusts to 15 mph in the afternoon.

Transport Wind: W 18 mph **Inversion:** Increasing to 7500 ft MSL by 1500 PDT.

THURSDAY NIGHT:

Sky/Weather: Mostly cloudy. 20% chance of rain showers. 10% chance of thunderstorms in the afternoon.

Min Temperature: 44-49.

Max RH: 67-72 percent.

20 ft Winds:

Valleys/Lower Slopes: West 5-10 mph becoming terrain driven 2-6 mph after sunset.

Ridges: West 5-10 mph becoming terrain driven 3-8 mph after midnight.

Inversion: Developing after 2100 near 500 ft.

FRIDAY:

Sky/Weather: Partly cloudy. 30% chance of rain showers. 15% chance of thunderstorms in the afternoon.

Max Temperature: Bottom: 71-76, Top: 64-69.

Min RH: 32-37 percent.

20 ft Winds:

Lower Valleys: Terrain driven 2-8 mph becoming west 5-10 mph in the afternoon.

Mid-slopes and Ridges: Terrain driven 3-8 mph becoming west 5-10 mph in the afternoon.

Transport Wind: W 11 mph. **Inversion:** Increasing to 7000 ft MSL by 1500 PDT.

Weather observations can be texted to 406-360-6330 or emailed to trent.smith@noaa.gov

FIRE BEHAVIOR FORECAST

FORECAST NUMBER: 11

TYPE OF FIRE: Wildland Fire

FIRE NAME: POST

OPERATIONAL PERIOD: 06/25 – 06/27

DATE ISSUED: June 23, 2025

TIME ISSUED: 1900

UNIT: ID-NCF

SIGNED: Mike Pagoaga - FBAN

WEATHER

******SEE IMET FORECAST FOR COMPLETE DETAILS******

MAX TEMPS: 71-81 **MIN RH:** 25-40

WINDS: Terrain driven 2-8 mph transitioning to west 5-10, gusts up to 20 mph

*Local Weather Thresholds that shout **WATCH OUT**
Temperatures above 85°, Relative Humidity below 20%,
20' winds above 5 mph*

FUELS

Predominant fuels are traditional high load, timber understory (TU5), and moderate load, timber understory (TU2) in continuous mixed conifer.

Live fuels will remain unavailable for fire spread until they begin to cure. 100-hr and 1000-hr fuels will require more drying time to become a contributor to wildfire spread. It will take a minimum of a week of drying before conditions return to near critical levels.

By Friday: 100-hr fuels = 14%, 1000-hr fuels = 17%

FIRE BEHAVIOR

General Fire Behavior

Warming and drying conditions are expected to elevate fire danger across the region this week. The ERC is projected to reach the 75th percentile by Friday, indicating a significant increase in fire potential. Any smoldering will be confined to stump holes and large dead fuels, such as logs and snags.

*Fine Dead Fuel Moisture: 7%
Probability of Ignition less than 50%*

Specific Fire Behavior

All Divisions: Minimal fire activity is anticipated. Soldering will continue in heavily sheltered areas that did not get the full range of precipitation. These are within the fire perimeter and pose minimal threat to containment. The risk of roll-out will always persist given the slope steepness around the bottom part of the fire.

SAFETY

The season has potential to be demanding. Prioritize your physical and mental well-being. Stay hydrated, get rest when you can, and look out for one another. Remember to stay connected with those who support you at home and on the incident—strong crews start with strong individuals.

POST FIRE SAFETY MESSAGE

DATE: June 25-27, 2025

Serious Hazards and Mitigations

- DRIVING** - Seat belts, defensive driving, limit distractions, use backups, headlights, safe speeds, clean windows.
- HEAT ILLNESS & OVER EXERTION** - Drink minimum 6-8+ qts/shift of fluids and maintain water/electrolyte ratio of 3 to 1, set a reasonable work pace and allow adequate rest breaks.
- COMMUNICATIONS** - Ensure frequencies and protocols, utilize the ICS205, use human repeaters in dead spots.

THE HAZARDS ARE STILL THERE!!!

ALWAYS ESTABLISH YOUR P.A.C.E. (PRIMARY, ALTERNATE, CONTINGENCY, EMERGENCY)

A Framework for Leadership

The ultimate purpose of leading in the wildland fire service is to protect life, property, and natural resources.

Leading here requires that we manage uncertainty and events that are not within our control. A framework to understand this leadership environment is critical to enable fire leaders to make effective decisions and communicate those decisions in dynamic situations.

The decision to lead and be successful within this framework requires an avid commitment to self-development.

Art of leadership

Leadership environment

Command philosophy

Command climate

Levels of leadership

Leading in the Wildland Fire Service - NFES 2889

OVERHEAD HAZARDS

Recent fire activity will impact the structural integrity of trees, many of which were already standing dead.

Assess work areas, parking areas, briefing areas, and camping areas for overhead hazards and avoid or mitigate when necessary.

Be aware that ingress/egress and escape routes could be compromised due to down trees.

Hung up trees pose additional risk due to the often-unpredictable direction they can fall.

Factors for increased risks to fireline personnel during transition periods include:

- No, or poor, briefing of incoming personnel.
- Lack of fire weather and behavior information, both forecasted or observed.
- Communications: face-to-face briefings may not be possible and radio frequencies may be overextended and/or changing due to increased demands on the system.
- Location of safety zones and escape routes may not be known and communicated to all resources.
- Not all resources know who is in command.

Risk Management Process

Fire operations risk management is outlined in the IRPG pg. 1. The five-step process provides firefighters and fire managers a simple, universal, and consistent way to practice risk management by:

- Establishing situation awareness by identifying hazards.
- Assessing hazard potential.
- Developing hazard controls and making risk management decisions.
- Implementing hazard controls.
- Supervising implementation and evaluating effectiveness. **Hazard** - A condition or situation that exists within the working environment capable of causing physical harm, injury, or damage. **Risk** - The likelihood or possibility of hazardous consequences in terms of severity or probability. **Risk Management** - The process whereby management decisions are made, and actions taken concerning control of hazards and acceptance of remaining risk.

Division/Group Assignment List (ICS 204 WF)
Controlled Unclassified Information//Basic

1. Incident Name:				3.			
POST				Branch:		Division/Group:	
2. Operational Period:				POST FIRE			
Date/Time From: 06/25/2025 0600 WED		Date/Time To: 06/27/2025 2200 FRI					
4. Operations Personnel							
IC		J.T. SOHR ELIJAH JOHNSTON (T)		FINANCE		ANNA LOWELL NATALIE BALTZER	
LOGISTICS		MIKE KEHLER					
5. Resources Assigned this Period							
Strike Team / Task Force / Resource Designator		LWD	Leader		Number Persons	Drop Off PT./Time	Pick Up PT./Time
E-12 ENG6 FNF - ENGINE 682		06/28			8		
O-31 WFM1 SELWAY		06/29			9		
TFLD RYAN WILLIAMS		06/29			1		
O-40 TFLD (T) JONATHON FUENTES		06/29			1		
TFLD LOUIS JAMES FLEMING		06/27			1		
TFLD (T) CALEB OLANDER		06/27			1		
E-16 AMBO 2 AERIE BACKCOUNTRY A03397		06/28			2		
6. Control Operations/Work Assignments: Task: Patrol and mop up sufficiently to prevent further spread. Purpose: Contain fire to current footprint to protect Highway 12 corridor. End state: Keep fire north of Highway 12 and west of Post Office Creek. Minimize impacts to the Highway 12 corridor.							
7. Special Instructions: <i>Evaluate all areas for snags and watch out for green trees falling. Utilize mixed handline/cold trailing tactics when appropriate.</i> <i>Implement suppression repair activities based on suppression repair plan. Assist local district with initial attack as needed.</i>							
8. Division/Group Communication Summary							
Function	Channel	RX Frequency N/W	RX Tone/NAC	TX Frequency N/W	TX Tone/NAC	Mode	
COMMAND	3	171.5750		166.2625	156.7	A	
TACTICAL	11					A	
AIR TO GROUND	10	167.9875		167.9875		A	
9. Prepared By (Resource Unit Leader)			Approved By (Planning Section Chief)		Date	Time	
GAYLE LAURENT			DYLAN RADER		06/23/2025	1250	

INCIDENT RADIO COMMUNICATIONS PLAN				Incident Name Post		Date/Time Prepared 6/22/25		Operational Period Date/Time 6/23/25 Thru 6/28/25 0600 - 2200			
Ch #	Function	Channel Name/Trunked Radio System Talkgroup	Assignment	RX Freq	N or W	RX Tone/NAC	TX Freq	N or W	Tx Tone/NAC	Mode A, D or M	Remarks
1	Dispatch	CLW-E Beaver Ridge		171.5750			166.2625		100.0	A	
2	Dispatch	CLW-E Diablo		171.5750			166.2625		151.4	A	
3	Command	CLW-E Bear Mt	Command	171.5750			166.2625		156.7	A	Coverage from Fire
4	Command	CLW-E Rocky Pt	Command	171.5750			166.2625		162.2	A	Coverage from ICP
5	Dispatch	CLW-N Osler		170.5000			165.0125		100.0	A	
6	Dispatch	CLW-S Coolwater		172.2250			165.7000		151.4	A	
7	Dispatch	CLW-S Castle Bt		172.2250			165.7000		156.7	A	
8	Dispatch	ICSO Rocky Pt		154.1150			156.0150		186.2	A	
9	Dispatch	ICSO Castle Bt		154.1150			156.0150		88.5	A	
10	A/G	NCF A/G 17	A/G	167.9875			167.9875			A	
11	Tactical	Fire Tac 1	Div A/Z p 100	169.1250			169.1250			A	
12	Tactical	Fire Tac 2	Div D/G 500	166.5625			166.5625			A	
13	MED	EMS 2		155.2800			155.2800		156.7	A	IWI Grangeville
14	Local	COM USE 1		163.7125			163.7125			A	
15	Local	COM USE 2		168.6125			168.6125			A	IWI
16	AirGuard	Air Guard	AIRGUARD	168.6250			168.6250		110.9	A	Emergency Use Only

Prepared by (Communications Unit) *Peter [Signature]* LSCC
 Vance Andersen COM1

The convention calls for frequency lists to show four digits after the decimal place, followed by either an "N" or a "W", depending on whether the frequency is narrow or wide band. Mode refers to either "A" or "D" indicating analog or digital (e.g. Project 25) or "M" indicating mixed mode. All channels are shown as if programmed in a control station, mobile or portable radio. Repeater and base stations must be programmed with the Rx and Tx reversed.

ICS-220 AIR OPERATIONS SUMMARY				Prepared By: Kurt Lehner			Prepared Time: 0830				
1. INCIDENT NAME: Grangeville Dispatch Center		2. OPS PERIOD DATE: 06/23/2025		END TIME: TBD		GIC SUNSET: 2038		GIC Pumpkin: 2108	GIC SUNRISE: 0454		
3. REMARKS (Safety Notes, Hazards, and Air Operations Special Equipment, etc.): Keep communications, clear, concise, brief. IF GVC Main phoneline 208-983-6800 does not work please call 208-983-8155. Note: Status was current as of the time this report was posted. Be advised that changes occur constantly.				4. READY ALERT AIRCRAFT *Call Dispatch to order Air Ambulances.					5. TFR's: POST - 5/5872, 5/5871		
CHECK frequencies closely!											
6. POSITION	NAME	PHONE #	7. FREQUENCIES	AM	FM	8. FIXED-WING- Type/ Make-Model/ N#/ Base					
NCF / COD AVIATION OFFICER	Jeremy Beeson	208-507-1649	AIR/AIR PRIMARY IA	132.2250		ORDER ALL AIRCRAFT THROUGH DISPATCH, ORDER WHAT YOU NEED.					
IDL AVIATION PROGRAM MANAGER	Corrie Ivey	208-982-1354	A/G PRIMARY IDL AG		151.1450	SMOKEJUMPER AIRCRAFT/SMKJs:					
NCF HELICOPTER PROGRAM DO	Lars Filson	541-292-2211	A/G Clear Nez #17		167.9875	J-16 Spotter + 6					
NCF/IDL TANKER BASE	See Notes below		A/G Secondary #45		167.6500						
NCF DISPATCH AIRCRAFT DESK		208-983-8155	NATIONAL FLT FOLLOW		168.6500 110.9 TX/RX						
GVC DISPATCH	IA FLOOR SUP. /AIRCRAFT COORD.	208-983-8155	AIR GUARD		168.6250 110.9 TX						
GVC DISPATCH		24-HOUR	208-983-8155	GVC TANKER BASE RAMP		124.125					
NOTES: GIC ATB not yet open for season. Post A/A: 118.4750				Military Training Routes IR301 & IR307 - COLD							
9. HELICOPTERS											
CALL SIGN / FAA N#	TYPE	MAKE/ MODEL	BASE	AVAIL	REMARKS	CALL SIGN / FAA N#	TYPE	MAKE/ MODEL	BASE	AVAIL	REMARKS
H-944H	T3	Bell	GIC	AL	HMGB + 5						
H-407RL	T3	Bell	MSO	Committed	Short Haul						
H-205BD	T2	Bell	Utah	Committed	HMGB+8						
H-406KT	T1	CH47D	HLN	Committed	Manager (Buckets only)						
HT-660FS	T1	Sikorsky	GIC	Committed	Manager (Buckets only)						
MEDICAL FACILITIES											

Medical Facility	Location	Latitude	Longitude	Elevation	Frequency	Remarks
Syringa General Hospital (Idaho County Airport)	Grangeville, ID 208-983-1700	N 45° 56.459'	W 116° 07.097'	3309'	155.340 TX Tone 156.7	No Pad - Land at Idaho County Airport (KGIC) - Coordinates are for KGIC.
Clearwater Valley Hospital	Orofino, ID 208-476-4555	N 46° 29.191'	W 116° 15.576'	1104'	155.340 TX Tone 156.7	Type 3 Helipad
St. Mary's Hospital	Cottonwood, ID 208-962-3251	N 46° 03.048'	W 116° 21.149'	3554'	155.340 TX Tone 156.7	Type 2 Helipad - Power lines on North and East side of pad. Dispatch - Call nurse's station direct: 208-962-2310
St. Joseph's Regional Medical - Level II Trauma Center	Lewiston, ID 208-743-2511	N 46° 25.016'	W 117° 01.449'	888'	Primary 155.340 Secondary 155.280 TX Tone 156.7	Roof Top - Type 2 - 9,000 lb. Dispatch Call Lead ER nurse direct: 208-799-6626. Try 208-799-5799 if can't reach nurse direct. State Comm 800-632-8000
Gritman Medical Center	Moscow, ID 208-882-4511	N 46° 43.683'	W 117° 00.056'	2560'	155.340 TX Tone 156.7	Roof Top - Type 2 - 12,000lb Dispatch call ER direct: 208-669-0369
Sacred Heart Medical Center - Level II Trauma Center	Spokane, WA 509-474-3131	N 47° 38.947'	W 117° 24.778'	2034'	155.340 TX Tone 156.7	Roof Top - Type 2 - 10,000lb. Dispatch call ER direct: 509-474-3345 or 509-474-3342
St. Patrick's Medical Center - Level II Trauma Center	Missoula, MT 406-543-7271	N 46° 52.524'	W 113° 59.969'	3207'	155.280 TX Tone 156.7	Roof Top - Type 2 Dispatch call ER direct: 406-329-5635 Ext.#4 or, 406-329-2620 For St. Pats Dispatch Line
McCall Memorial Hospital (McCall Airport)	McCall, ID 208-634-2221	N 44° 53.841'	W 116° 06.017'	5025'	155.340 TX Tone 156.7	No Helipad - Land @ McCall Airport (KMYL) - Land on North Apron near compass rose. Dispatch call 208-634-2221 to advise hospital and initiate ground transport.
Community Medical Center - Level III Trauma Center	Missoula, MT 406-728-4100 ER Direct:	N 46° 50.910'	W 114° 2.866'	3200'	155.280 TX Tone 156.7	Type 2 Helipad Dispatch call ER Direct: 406-327-4171 Ext.# 1

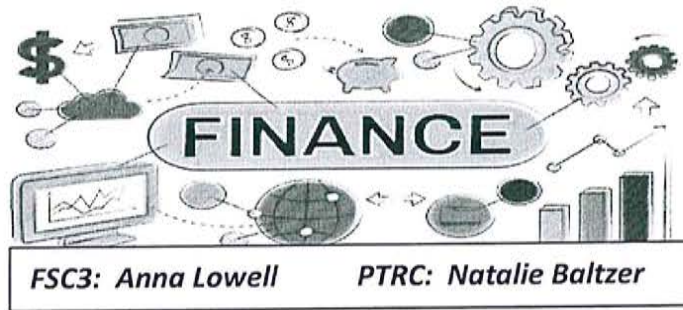
	406-327-4171 Ext.#1						
Marcus Daly Memorial Hospital	Hamilton, MT 406-375-4440	N 46° 14.918'	W 114° 10.372'	3644'	155.280 TX Tone 156.7	Type 2 Helipad Dispatch call ER Direct: 406-375-4440	
Mineral Community Hospital	Superior, MT 406-822-4841	N 47° 11.13'	W 114° 52.65'	2744'	155.280 TX Tone 156.7	Type 3 Helipad Dispatch call ER Direct: 406-822-4841 Trees along roadway. Chain link fences in area	

ACTIVITY LOG (ICS 214)

[illegible]

Finance Contact Information starting Wednesday, June 25:

NEW PHONE NUMBER: 509-680-4250



email:

FSC3: Anna Lowell

PTRC: Natalie Baltzer

2025.post.finance@firenet.gov

Find us in the Cookhouse at the Powell Ranger Station.

MEDICAL PLAN (ICS 206 WF)

Controlled Unclassified Information//Basic

Medical Incident Report																													
<p>FOR A NON-EMERGENCY INCIDENT, WORK THROUGH CHAIN OF COMMAND TO REPORT AND TRANSPORT INJURED PERSONNEL AS NECESSARY.</p> <p>FOR A MEDICAL EMERGENCY: IDENTIFY ON-SCENE INCIDENT COMMANDER BY NAME AND POSITION AND ANNOUNCE "MEDICAL EMERGENCY" TO INITIATE RESPONSE FROM IMT COMMUNICATIONS/DISPATCH.</p>																													
<p>Use the following items to communicate situation to communications/dispatch.</p>																													
<p>1. CONTACT COMMUNICATIONS / DISPATCH (Verify correct frequency prior to starting report) <i>Ex: "Communications, Div. Alpha. Stand-by for Emergency Traffic."</i></p> <p>2. INCIDENT STATUS: Provide incident summary (including number of patients) and command structure. <i>Ex: "Communications, I have a Red priority patient, unconscious, struck by a falling tree. Requesting air ambulance to Forest Road 1 at (Lat./Long.) This will be the Trout Meadow Medical, IC is TFLD Jones. EMT Smith is providing medical care."</i></p>																													
Severity of Emergency / Transport Priority	<input type="checkbox"/> RED / PRIORITY 1 Life or limb threatening injury or illness. Evacuation need is IMMEDIATE <i>Ex: Unconscious, difficulty breathing, bleeding severely, 2° – 3° burns more than 4 palm sizes, heat stroke, disoriented.</i> <input type="checkbox"/> YELLOW / PRIORITY 2 Serious Injury or illness. Evacuation may be DELAYED if necessary. <i>Ex: Significant trauma, unable to walk, 2° – 3° burns not more than 1-3 palm sizes.</i> <input type="checkbox"/> GREEN / PRIORITY 3 Minor Injury or illness. Non-Emergency transport <i>Ex: Sprains, strains, minor heat-related illness.</i>																												
Nature of Injury or Illness & Mechanism of Injury			Brief Summary of Injury or Illness (Ex: Unconscious, Struck by Falling Tree)																										
Evacuation Request			Air Ambulance / Short Haul/Hoist Ground Ambulance / Other																										
Patient Location			Descriptive Location & Lat. / Long. (WGS84)																										
Incident Name			Geographic Name + Medical (Ex: Trout Meadow Medical)																										
On-Scene Incident Commander			Name of on-scene IC of Incident within an Incident (Ex: TFLD Jones)																										
Patient Care			Name of Care Provider (Ex: EMT Smith)																										
<p>3. INITIAL PATIENT ASSESSMENT: Complete this section for each patient as applicable (start with the most severe patient)</p> <p>Patient Assessment: See IRPG PAGE 106</p> <p>Treatment:</p>																													
<p>4. EVACUATION PLAN:</p> <p>Evacuation Location (if different): (Descriptive Location (drop point, intersection, etc.) or Lat. / Long.) Patient's ETA to Evacuation Location:</p> <p>Helispot / Extraction Site Size and Hazards:</p>																													
<p>5. ADDITIONAL RESOURCES / EQUIPMENT NEEDS:</p> <p><i>Example: Paramedic/EMT, crews, immobilization devices, AED, oxygen, trauma bag, IV/fluid(s), splints, rope rescue, wheeled litter, HAZMAT, extrication</i></p>																													
<p>6. COMMUNICATIONS: Identify State Air/Ground EMS Frequencies and Hospital Contacts as applicable</p> <table border="1" style="width:100%; border-collapse: collapse;"> <thead> <tr> <th>Function</th> <th>Channel Name/Number</th> <th>Receive (RX)</th> <th>Tone/NAC *</th> <th>Transmit (TX)</th> <th>Tone/NAC *</th> </tr> </thead> <tbody> <tr> <td>COMMAND</td> <td></td> <td></td> <td></td> <td></td> <td></td> </tr> <tr> <td>AIR-TO-GRND</td> <td></td> <td></td> <td></td> <td></td> <td></td> </tr> <tr> <td>TACTICAL</td> <td></td> <td></td> <td></td> <td></td> <td></td> </tr> </tbody> </table>						Function	Channel Name/Number	Receive (RX)	Tone/NAC *	Transmit (TX)	Tone/NAC *	COMMAND						AIR-TO-GRND						TACTICAL					
Function	Channel Name/Number	Receive (RX)	Tone/NAC *	Transmit (TX)	Tone/NAC *																								
COMMAND																													
AIR-TO-GRND																													
TACTICAL																													
<p>7. CONTINGENCY: <u>Considerations:</u> If primary options fail, what actions can be implemented in conjunction with primary evacuation method? Be thinking ahead..</p>																													
<p>8. ADDITIONAL INFORMATION: Updates/Changes, etc.</p>																													
<p>REMEMBER: Confirm ETAs of resources ordered. Act according to your level of training. Be Alert. Keep Calm. Think Clearly. Act Decisively.</p>																													

MEDICAL PLAN (ICS 206)

1. Incident Name: Post Fire		2. Operational Period: Date From: 06/25/25 Date To: 06/27/25 Time From: 0600 Time To: 2200					
3. Air Ambulances:							
Name	Location	Contact Number(s)/Frequency	Paramedics on Site?				
Life Flight Network	MT, ID	911	<input checked="" type="checkbox"/> Yes <input type="checkbox"/> No				
			<input type="checkbox"/> Yes <input type="checkbox"/> No				
			<input type="checkbox"/> Yes <input type="checkbox"/> No				
			<input type="checkbox"/> Yes <input type="checkbox"/> No				
			<input type="checkbox"/> Yes <input type="checkbox"/> No				
			<input type="checkbox"/> Yes <input type="checkbox"/> No				
4. Transportation (indicate air or ground):							
Ambulance Service	Location	Contact Number(s)/Frequency	Level of Service				
MESI	Missoula, MT	911	<input checked="" type="checkbox"/> ALS <input type="checkbox"/> BLS				
Kooskia	Kooskia, ID	911	<input type="checkbox"/> ALS <input checked="" type="checkbox"/> BLS				
			<input type="checkbox"/> ALS <input type="checkbox"/> BLS				
			<input type="checkbox"/> ALS <input type="checkbox"/> BLS				
5. Hospitals:							
Hospital Name	Address, Latitude & Longitude if Helipad	Contact Number(s)/Frequency	Travel Time		Trauma Center	Burn Center	Helipad
			Air	Ground			
ST. Patrick Missoula, MT	LAT- N 46-52-31.64 LONG- W 113-59-59.19	911, MT23	20 min	1.5 hrs	<input checked="" type="checkbox"/> Yes Level: 2	<input type="checkbox"/> Yes <input checked="" type="checkbox"/> No	<input checked="" type="checkbox"/> Yes <input type="checkbox"/> No
Syringa General Grangeville, ID	LAT- N45-56-33.60 LONG- W116-07-22.90	911, KGIC		2 hrs	<input type="checkbox"/> Yes Level: _____	<input type="checkbox"/> Yes <input checked="" type="checkbox"/> No	<input type="checkbox"/> Yes <input checked="" type="checkbox"/> No
					<input type="checkbox"/> Yes Level: _____	<input type="checkbox"/> Yes <input type="checkbox"/> No	<input type="checkbox"/> Yes <input type="checkbox"/> No
					<input type="checkbox"/> Yes Level: _____	<input type="checkbox"/> Yes <input type="checkbox"/> No	<input type="checkbox"/> Yes <input type="checkbox"/> No
					<input type="checkbox"/> Yes Level: _____	<input type="checkbox"/> Yes <input type="checkbox"/> No	<input type="checkbox"/> Yes <input type="checkbox"/> No
6. Special Medical Emergency Procedures:							
Due to remote location of incident, severe/critical patients will be transported from fire by helicopter, if possible							
Approved helispot at ICP, N 46-19-81/W 114-42-53							
Please review and follow 8 Line Report							
24/7 contact MEDL Rosemary 406-334-3926, MEDL Ray 602-300-8455							
<input checked="" type="checkbox"/> Check box if aviation assets are utilized for rescue. If assets are used, coordinate with Air Operations.							
7. Prepared by (Medical Unit Leader): Name: /S/Ray Mines MEDL Signature: _____							
8. Approved by (Safety Officer): Name: /S/ Leroy Holguin SOFC Signature: _____							
ICS 206		IAP Page _____		Date/Time: 06/22/25 1117			