

Sunset

ID-POS-000630



Incident Action Plan

Thursday August 21, 2025

0600-2200



For Check-in, Maps & IAP



This page intentionally left blank

INCIDENT OBJECTIVES

ICS-202

INCIDENT NAME

SUNSET

DATE PREPARED

8/20/2025

TIME PREPARED

2000

OPERATIONAL PERIOD (DATE/TIME)

August 21, 2025, 0600 – 2200**INCIDENT OBJECTIVES:**

Implement risk management practices to provide for firefighter and public safety.

Implement full suppression strategies to keep the fire North of Sunset Road, East of Cross White Road, South of Talache Road, and West of Lake Pend Oreille.

Utilize tactics to protect prioritized values, commensurate with responder risk:

- 1) Private residences and property
- 2) Critical infrastructure and communications sites
- 3) US Navy Infrastructure
- 4) Private, State and Federal timber lands
- 5) Developed recreation infrastructure on Forest Service and BLM lands
- 6) Heritage sites on Forest Service and BLM lands

Manage incident costs commensurate with the values at risk.

INCIDENT REQUIREMENTS:

Preserve, maintain and foster interagency relationships.

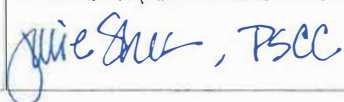
Coordinate routine messaging to the public and identified incident cooperators.

Minimize suppression impacts to heritage resources through coordination with assigned agency Resource Advisors.

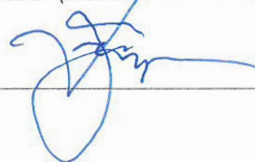
☒ ORGANIZATION LIST (ICS 203)☒ AIR OPS SUMMARY (ICS 220)☒ FINANCE MESSAGE☒ FIRE WEATHER FORECAST☒ COMMUNICATION PLAN (ICS 205)☒ DIVISION SUPPLY ORDER☒ FIRE BEHAVIOR FORECAST☒ SAFETY MESSAGE☒ INCIDENT MAP☒ ASSIGNMENT LIST (ICS 204)☒ MEDICAL PLAN (ICS 206)☒ UNIT LOG / ICS 206 WF

ICS 202

PREPARED BY (PLANNING SECTION CHIEF)



APPROVED BY (INCIDENT COMMANDER)



ORGANIZATION ASSIGNMENT LIST		9. OPERATIONS		
1. Incident Name SUNSET ID-POS-000630		Planning Ops		Greg Schenk
		Line Ops		Kevin Smith
		Strategic Ops		Paul Diaz
2. Date August 20, 2025	3. Time 2100	a. Branch I - Divisions/Groups		
4. Operational Period August 21, 2025 0600-2200		Division/Group		A Macker Babb; Jarid Clark (T)
		Division/Group		F/M Dave Maclay-Schulte; Mitch Robbins (T)
		Division/Group		R Aaron Jones; Steve Aguirre (T)
5. Incident Commander and Staff		Division/Group		T Scott Drake
Incident Commander	Joe Sampson	Division/Group		Z Chris White; Toby Greenberg (T)
Deputy Incident Commander	Rick Connell	Structure Group		Mike King; Charlie McDonald (T)
Safety Officer	Adam Carr; Jonathan White; Mike Smith (T); Robert Spence (T)	Staging		
Information Officer	Terina Hill; Erik Broeder (T)			
Liaison Officer	Kevin Doherty; Geoffrey Bogie			
6. Agency Representatives				
Agency	Name			
IDL	Erik Sjoquist			
BLM	Ray Pease			
USFS	Kevin Knauth; Chris Noyes (T)			
7. Planning Section				
Chief	Julie Shea; John Gubel; Jim Stiteler			
Resources Unit	Patty Bates; MJ Crandall			
Situation Unit	Brett Gore; Brittney Allestad (T)			
Demobilization Unit	Sue Puddy			
Documentation Unit	Elvira Nieves (T)	c. Air Operations Branch		
GISS	Justin Martens (V); Jay Gatlin; Matt Heller (T); Jeniffer Lacounte (T)	Air Operations		Steve Croy; Jeff Pollack
IMET	Bob Hoenisch	Air Attack		
FBAN	Mike Pagoaga	Helicopter Coord		
LTAN	Jon Rieck; Todd Erdody	Air Tanker Coord		
ITSS	Mike Harper; Amy Johnson; Michel Mouzong (T)	10. Finance Section		
8. Logistics Section		Chief		Wendy McCartney
Chief	Bill Lauer; Peter Pappas (V)	Procurement		Tammy Petersen; Stew Williams(T)
Supply Unit	Meghan Carosella	Time Unit		Haliegh Scott
Ordering Manager	Brian Brault; Lynda Murphy; Darcy Wheeler (V)	Comp/Claims Unit		Quoya Waters
Ground Support	Jim Lane; Evan Johnson	Cost Unit		Terry Grosbeck (V)
Food Unit	Justin Trodick	Prepared by (Resource Unit Leader) Patty Bates		
Medical Unit	Ray Mines; Steve Kendley; Chris Jacks; Sadie Galloway (T)			
Communication Unit	Mike Scherer			
Security Unit	Richard Paine			
Facilities Unit	Pat Nelson			

FORECAST NO. 04

NAME OF INCIDENT: Sunset

FORECAST FOR: Thursday Aug 21, 2025

UNIT: IDL-Pend Oreille

TIME AND DATE

FORECAST ISSUED: 1800 Wed Aug 20, 2025

SIGNED: Bob Hoenisch (406) 899-4112

Incident Meteorologist

WEATHER DISCUSSION:

A strengthening upper level ridge of high pressure will build westward across the interior western U.S. through the upcoming weekend for increasingly hot and dry conditions. Low pressure deepening across the Columbia Basin and higher pressure east of the Northern Rockies will support the development of general north to northeast winds across the area, which may continue through the upcoming weekend. Daytime winds are expected to be primarily slope/terrain driven with the general north to northeast winds affecting ridgetops and exposed locations, particularly during the overnight through early morning periods. By this weekend, hot and dry conditions will be well established across the area along with increasingly poor overnight humidity recovery.

WEATHER: Mostly sunny.

MAX TEMPERATURES:

2000 FT: 84 – 89

4000 FT: 80– 85 (Up 2-3)

MINIMUM RELATIVE HUMIDITY:

2000 FT: 20 – 25%

4000 FT: 24 – 29% (Down 3 - 5%)

20 FOOT WINDS:

Slope/Lakeshore: North 4 - 8 mph, becoming upslope/up-drainage 3 - 5 mph in the terrain in the afternoon.

Ridgetop: North 5-10 mph. Gust around 15 mph, mainly in the morning.

STABILITY: Morning inversion dissipates by 1100 with afternoon mixing to 8000 ft .

CHANCE OF WETTING RAIN: 0% **SMOKE TRANSPORT WIND:** North 10-15 mph

THURSDAY NIGHT:

WEATHER: Mostly clear.

MINIMUM TEMPERATURE: 54-59. 58-63 mid-slope to ridges.

MAXIMUM RELATIVE HUMIDITY: 50-55%. 45-50% mid-slope to ridges .

20 FOOT WINDS: North to northeast 4-8 mph with gusts to 15 mph along the lakeshore and over ridgetops with winds down-drainage in east-west oriented drainages.

STABILITY: Becoming stable after 2100.

CWR: 0%

FRIDAY: Mostly sunny. Northeast winds 5-10 mph with gusts to 16 mph over ridgetops and areas along the lake, becoming upslope/up-drainage 4-8 mph in the afternoon. High temperatures in the mid-upper 80s with minimum relative humidity 20-25%.

OUTLOOK FOR SATURDAY THROUGH MONDAY: Hot and dry conditions continue through early next week with afternoon temperatures peaking well into the 90s Sunday and Monday. Overnight thermal belt conditions on mid-upper slopes will lead to moderate to poor overnight humidity recovery.

Send weather observations to:
(406) 899-4112 or robert.hoenisch@noaa.gov

Scan QR code for nearby obs:



FIRE BEHAVIOR FORECAST

FORECAST NUMBER: 4

TYPE OF FIRE: Wildland Fire

FIRE NAME: Sunset

OPERATIONAL PERIOD: Thursday, Aug. 21

DATE ISSUED: August 20, 2025

TIME ISSUED: 1800

UNIT: ID-POS

SIGNED: Mike Pagoaga - FBAN

WEATHER

*** SEE IMET FORECAST ***

*Local Weather Thresholds that shout **WATCH OUT***

Temperature > 80 F Relative Humidity < 20%

1000-Hour Fuel Moisture < 15%

Eye level winds over 10 mph, 20 ft Winds over 15 mph

FUELS

The area comprises a mix of fuel models: TU5 (very high load, dry climate timber-shrub), TU2 (moderate load, humid climate timber-shrub), and SH2 (moderate load, dry climate shrub). Fuels are mid-way through their curing phase of growth and will provide little resistance to fire spread. Areas that are barren can still support fire spread due to the sparse dry fuels.

FIRE DANGER CONDITIONS = High

100 Hr Fuel Moisture = 12%

1000 Hr Fuel Moisture = 14%

Energy Release = 94%

Burning Index = 85%



FIRE BEHAVIOR

General Fire Behavior:

The fire environment continues to become more unstable each day. Moderate to active surface fire behavior with flanking, torching and short-range spotting. Short, up-hill runs are likely as the fire positions itself deeper within drainages. Expect differing winds and more terrain influence as the fire tries to spread north and west.

Fine Dead Fuel Moisture: 4% unshaded, 7% shaded

Probability of Ignition 70-80%, spotting less than .25 mile with wind gusts and full exposure

Specific Fire Behavior:

DIV A: Favorable conditions for operational assignments. Watch for the occasional flare up after 1400 when humidities are the lowest.

DIV F/M: Today's winds will test this division along the ridgeline. The fire will continue burn actively in Maiden Creek with torching and short-range spotting.

DIV Z: North winds will challenge containment lines today, especially from DP 170 to the east. Flanking fire behavior along the coastline with the occasional up-slope run is possible toward the Three Sisters Peaks.

DIV T: Pockets of unburned or patchy burns can become active, torch, and throw spots into other divisions. Expect this to happen after 1400 when humidity begins drops below 30%.

DIV R: Winds will be amplified along the ridgelines, increasing fire behavior. Expect active burning again today after 1400 and extend into the evening when winds become NE. Aviation resources have been able to keep much of the fire in check.

Safety

Fuels have fully recovered from the rain on Saturday,
Expect increased activity and receptibility under these drying conditions.

Division/Group Assignment List (ICS 204 WF)

Controlled Unclassified Information//Basic

1. Incident Name:				3.			
SUNSET				Branch:		Division/Group:	
2. Operational Period:				A			
Date/Time From: 08/21/2025 0600 THU		Date/Time To: 08/21/2025 2200 THU					
4. Operations Personnel							
PLANNING OPS		GREG SCHENK			LINE OPS		KEVIN SMITH
DIVISION/GROUP SUPERVISOR		MACKER BABB JARID CLARK (T)			SAFETY		ADAM CARR JONATHAN WHITE
5. Resources Assigned this Period							
Strike Team / Task Force / Resource Designator		LWD	Leader		Number Persons	Drop Off PT./Time	Pick Up PT./Time
O-5 TFLD AARON BABIN		08/27			1	ICP/0630	ICP/2030
O-75 TFLD JOSH BRANDT		08/27			1	ICP/0630	ICP/2030
E-14.1 TFLD CONNOR SHOEBOOKS		08/23			1	ICP/0630	ICP/2030
C-4 CR2I GRAYBACK A		08/27	BRYAN LEWMAN		20	ICP/0630	ICP/2030
C-6 CR2I MILLER ALPHA		08/28	GARCIA LUIS		22	ICP/0630	ICP/2030
E-11 ENG5 E3252		08/26	KEVIN GUDITUS		4	ICP/0630	ICP/2030
E-14 ENG6 E-611-2 NANTAHALA		08/23	BRANDON PHILLIPS		4	ICP/0630	ICP/2030
E-20 ENG6 NORTHWEST ENGINE 37		08/31	GARY MOBBS		3	ICP/0630	ICP/2030
E-22 ENG6 NORTHWEST ENGINE 27		08/31	SCOTT SHERLOCK		3	ICP/0630	ICP/2030
E-23 ENG6 MONTANA FIRE, LLC		08/31	BRENT LUNDE		3	ICP/0630	ICP/2030
E-3 WTS2 FOX CREEK		08/27	MOUREEN WEST		1	ICP/0630	ICP/2030
E-62 WTS2 OXFORD, INC		08/31	JON ROGERS		1	ICP/0630	ICP/2030
E-26 WTS3 NORTHSIDE FIRE DISTRICT		08/28	ALEXIS VANDECOEVERING		1	ICP/0630	ICP/2030
O-100 AEMF ALEXA WARNCKE		09/02			1	ICP/0630	ICP/2030
E-16 AMB4 HAUSER LAKE BLS		08/28	DAVE STROHTE		2	ICP/0630	ICP/2030
O-41 SOFR WILLY CIRONE		09/01			1	ICP/0630	ICP/2030
O-115 SOFR CHRIS ROBERTSON (T)		09/02			1	ICP/0630	ICP/2030
O-111 REAF CASEY SEAMAN (T)		09/01			1	ICP/0630	ICP/2030
8. Division/Group Communication Summary							
Function	Channel	RX Frequency N/W	RX Tone/NAC	TX Frequency N/W	TX Tone/NAC	Mode	
TACTICAL	1	168.0500	110.9	168.0500	110.9	A	
COMMAND	7	168.5000	110.9	164.8750	110.9	A	
COMMAND	8	170.9750	110.9	168.7000	110.9	A	
AIR TO GROUND	14	171.4250		171.4250		A	
AIR TO GROUND	15	171.7750		171.7750		A	
9. Prepared By (Resource Unit Leader)			Approved By (Planning Section Chief)			Date	
M.J. CRANDALL			JOHN GUBEL			08/20/2025	
						0929	

Controlled Unclassified Information//Basic

Page 2 of 2

Division/Group Assignment List (ICS 204 WF)

Controlled Unclassified Information//Basic

1. Incident Name:				3.		
SUNSET				Branch:		Division/Group: F/M
2. Operational Period:						
Date/Time From: 08/21/2025 0600 THU		Date/Time To: 08/21/2025 2200 THU				
4. Operations Personnel						
PLANNING OPS		GREG SCHENK		LINE OPS		KEVIN SMITH
DIVISION/GROUP SUPERVISOR		DAVE MACLAY-SCHULTE MITCH ROBBINS (T)		SAFETY		ADAM CARR JONATHAN WHITE
5. Resources Assigned this Period						
Strike Team / Task Force / Resource Designator	LWD	Leader	Number Persons	Drop Off PT./Time	Pick Up PT./Time	
O-79 TFLD JOHN COOK	08/27		1	ICP/0630	ICP/2030	
O-98 TFLD CASEY SCHELIN	08/31		1	ICP/0630	ICP/2030	
O-35 TFLD NICHOLAS CLARK (T)	08/26		1	ICP/0630	ICP/2030	
O-7.8 TFLD GUS JACKSON (T)	08/27		1	ICP/0630	ICP/2030	
O-26 HEQB JARED HAMMATT	08/31		1	ICP/0630	ICP/2030	
O-37 HEQB DENNIS GILLMER	08/30		1	ICP/0630	ICP/2030	
O-57 HEQB JULIO RAMOS MACIEL (T)	09/02		1	ICP/0630	ICP/2030	
C-3 CR2I PATRICK CHARLIE	08/27	JOE FOWARD	20	ICP/0630	ICP/2030	
C-14 CR2I DIAMOND FIRE 11A	08/29	JONATHAN ALVAREZ	20	ICP/0630	ICP/2030	
C-15 CR2I UMPQUA SZ	08/26	DANE DEXTER	19	ICP/0630	ICP/2030	
C-18 CR2I PATRICK ECHO	09/01	WILLIAM NEASON	20	ICP/0630	ICP/2030	
O-112 SMOD NORTH IDAHO SUPPRESSION MOD	09/01	JASMINE CHOWNING	6	ICP/0630	ICP/2030	
E-39 ENG5 E1152	08/28	OWEN VANDECOEVERING	3	ICP/0630	ICP/2030	
E-19 ENG6 SEAN ANDREWS FIRE SERVICE	08/31	NATHANIEL KIELE	3	ICP/0630	ICP/2030	
E-63 DZR2 NELSON BROS TIMBER	08/31	CHAD SHORT	2	ICP/0630	ICP/2030	
E-2 DZR2 FOUSTS INC	08/26	DARRL UNRUH	2	ICP/0630	ICP/2030	
E-82 FEI.1 AKRE LOGGING	08/29	AKRE DEAN	2	ICP/0630	ICP/2030	
E-123 MBM2 AKRE LOGGING	08/29	ALEX SIMPKINS	2	ICP/0630	ICP/2030	
E-44 WTT2 OXFORD INC	08/28	HANS WARBOYS	1			
8. Division/Group Communication Summary						
Function	Channel	RX Frequency N/W	RX Tone/NAC	TX Frequency N/W	TX Tone/NAC	Mode
TACTICAL	2	168.2000	110.9	168.200	110.9	A
COMMAND	7	168.5000	110.9	164.8750	110.9	A
COMMAND	8	170.9750	110.9	168.7000	110.9	A
AIR TO GROUND	14	171.4250		171.4250		A
AIR TO GROUND	15	171.7750		171.7750		A
9. Prepared By (Resource Unit Leader)		Approved By (Planning Section Chief)		Date		Time
M.J. CRANDALL		JOHN GUBEL		08/20/2025		0929

Controlled Unclassified Information//Basic

ICS 204 WF (1/14)

Division/Group Assignment List (ICS 204 WF)

Controlled Unclassified Information//Basic

1. Incident Name:				3.			
SUNSET				Branch:		Division/Group:	
2. Operational Period:						R	
Date/Time From: 08/21/2025 0600 THU		Date/Time To: 08/21/2025 2200 THU					
4. Operations Personnel							
PLANNING OPS		GREG SCHENK		LINE OPS		KEVIN SMITH	
DIVISION/GROUP SUPERVISOR		AARON JONES STEVE AGUIRRE (T)		SAFETY		ADAM CARR JONATHAN WHITE	
5. Resources Assigned this Period							
Strike Team / Task Force / Resource Designator		LWD	Leader	Number Persons	Drop Off PT./Time	Pick Up PT./Time	
O-28 TFLD WES MORGAN (T)		08/26		1	ICP/0630	ICP/2030	
O-78 TFLD ERIK JANSEN (T)		09/03		1	ICP/0630	ICP/2030	
O-97 TFLD ZACH ALEXAKIS (T)		09/03		1	ICP/0630	ICP/2030	
O-62 HEQB ERIC KLEIN		08/27		1	ICP/0630	ICP/2030	
O-29 HEQB BOB ECK		08/26		1	ICP/0630	ICP/2030	
E-65.1 HEQB MASON WYMAN (T)		08/28		1	ICP/0630	ICP/2030	
C-7 CRW1 ELDORADO IHC		08/25	BENJAMIN STRAHAN	24	ICP/0630	ICP/2030	
C-8 CRW1 TAHOE IHC		08/28	DANIEL GERMAN GUERRERO	20	ICP/0630	ICP/2030	
C-12 CRW1 BAKER RIVER IHC		08/27	GARY CHICKS	25	ICP/0630	ICP/2030	
C-9 CR2I LOLO REGULARS #1		08/28	MARGARET FISK	22	ICP/0630	ICP/2030	
C-13 CR2I MILLER TIMBER NCC1A		09/03	TJ CANO	20	ICP/0630	ICP/2030	
C-17 CR2I GRAYBACK FORESTRY INC		08/31	DANIEL SILLER	20	ICP/0630	ICP/2030	
C-20 CR2I MILLER DELTA		09/03	SHIMA MAIDHER	22	ICP/0630	ICP/2030	
E-65 ENG6 CATALDO F11		08/28	CLAYTON MCQUADE	3	ICP/0630	ICP/2030	
E-45 SKG1 EQUIPMENT TECHNOLOGIES		08/28	KADEN PRATHER	2	ICP/0630	ICP/2030	
E-46 SKG1 CHAPMAN		08/28	COREY CHAPMAN	2	ICP/0630	ICP/2030	
E-24 DZR2 AKRE LOGGING		08/28	REUBEN AKRE	2	ICP/0630	ICP/2030	
E-34 DZR3 EQUIPMENT TECHNOLOGIES		08/28	GREG JONES	1	ICP/0630	ICP/2030	
E-81 MBM1 ALTERED ASPECTS		08/29	JAY NORDSTROM	2	ICP/0630	ICP/2030	
8. Division/Group Communication Summary							
Function	Channel	RX Frequency N/W	RX Tone/NAC	TX Frequency N/W	TX Tone/NAC	Mode	
TACTICAL	3	168.6000	110.9	168.6000	110.9	A	
COMMAND	7	168.5000	110.9	164.8750	110.9	A	
COMMAND	8	170.9750	110.9	168.7000	110.9	A	
AIR TO GROUND	14	171.4250		171.4250		A	
AIR TO GROUND	15	171.7750		171.7750		A	
9. Prepared By (Resource Unit Leader)		Approved By (Planning Section Chief)			Date	Time	
M.J. CRANDALL		JOHN GUBEL			08/20/2025	0929	

Division/Group Assignment List (ICS 204 WF)
Controlled Unclassified Information//Basic

1. Incident Name:				3.			
SUNSET				Branch:		Division/Group:	
2. Operational Period:				R			
Date/Time From: 08/21/2025 0600 THU		Date/Time To: 08/21/2025 2200 THU					
4. Operations Personnel							
PLANNING OPS		GREG SCHENK		LINE OPS		KEVIN SMITH	
DIVISION/GROUP SUPERVISOR		AARON JONES STEVE AGUIRRE (T)		SAFETY		ADAM CARR JONATHAN WHITE	
5. Resources Assigned this Period							
Strike Team / Task Force / Resource Designator		LWD	Leader	Number Persons	Drop Off PT./Time	Pick Up PT./Time	
E-105 MBM2 HESTER FOREST MGMT		08/29		1	ICP/0630	ICP/2030	
E-48 FEL1 AKRE LOGGING		08/29	COREY LOVELL	2	ICP/0630	ICP/2030	
O-122 FMOD BROTHERS FIRE		09/03	MATT SHIVELY	2	ICP/0630	ICP/2030	
O-99 EMPF ADVENTURE MEDICS		09/01	STEPHEN TUCKER	1	ICP/0630	ICP/2030	
O-121 REM1 BACKCOUNTRY MEDICS 2		09/03	ETHAN ADAMS	4	ICP/0630	ICP/2030	
E-42 AMB1 FREMONT CO ALS/BLS		08/29	TRACY GARCIA	2	ICP/0630	ICP/2030	
O-110 SOFC MATTHEW NELSON		08/25		1	ICP/0630	ICP/2030	
O-124 REAF ALLISON STRINGER		09/02		1	ICP/0630	ICP/2030	
6. Control Operations/Work Assignments:							
Task: Continue to scout and construct direct and indirect control lines and secure spot fires.							
Purpose: To prevent fire spread to the west and north towards critical values at risk.							
End State: Fire progression is stopped and spot fires are controlled. Critical values at risk are protected while utilizing deliberate risk assessments.							
7. Special Instructions:							
8. Division/Group Communication Summary							
Function	Channel	RX Frequency N/W	RX Tone/NAC	TX Frequency N/W	TX Tone/NAC	Mode	
TACTICAL	3	168.6000	110.9	168.6000	110.9	A	
COMMAND	7	168.5000	110.9	164.8750	110.9	A	
COMMAND	8	170.9750	110.9	168.7000	110.9	A	
AIR TO GROUND	14	171.4250		171.4250		A	
AIR TO GROUND	15	171.7750		171.7750		A	
9. Prepared By (Resource Unit Leader)		Approved By (Planning Section Chief)			Date	Time	
M.J. CRANDALL		JOHN GUBEL			08/20/2025	0929	

Controlled Unclassified Information//Basic

Page 1 of 1

Division/Group Assignment List (ICS 204 WF)

Controlled Unclassified Information//Basic

1. Incident Name:				3.			
SUNSET				Branch:		Division/Group:	
2. Operational Period:						Z	
Date/Time From: 08/21/2025 0600 THU		Date/Time To: 08/21/2025 2200 THU					
4. Operations Personnel							
PLANNING OPS		GREG SCHENK		LINE OPS		KEVIN SMITH	
DIVISION/GROUP SUPERVISOR		CHRIS WHITE TOBY GREENBERG (T)		SAFETY		ADAM CARR JONATHAN WHITE	
5. Resources Assigned this Period							
Strike Team / Task Force / Resource Designator		LWD	Leader	Number Persons	Drop Off PT./Time	Pick Up PT./Time	
O-117 TFLD RYAN JACKSON		08/27		1	DP 170/0700	DP 170/2000	
O-105 TFLD KALIROSE ZURFLUH (T)		08/30		1	DP 170/0700	DP 170/2000	
O-27 HEQB JOSHUA WOLFSON		08/31		1	DP 170/0700	DP 170/2000	
C-23 CRW1 WOLF CREEK IHC		09/03	JACOB GARATE	24	DP 170/0700	DP 170/2000	
C-2 CR2I PATRICK BRAVO		08/27	MATT ELLIOT	20	DP 170/0700	DP 170/2000	
C-5 CR2I MILLER BRAVO		08/28	MAXWELL LABAHN	22	DP 170/0700	DP 170/2000	
C-16 CR2I GRAYBACK IRAC #2		08/29	JEREME LOVE	22	DP 170/0700	DP 170/2000	
C-19 CR2I TEAKAN		09/02	PROCTOR BRYDON	21	DP 170/0700	DP 170/2000	
E-8 ENG5 ENG 2351		08/26	ELIZABETH BLOXSOM	5	DP 170/0700	DP 170/2000	
E-13 ENG5 INLAND FOREST MGMT 522		08/26	CHRIS TERWILLIGER	3	DP 170/0700	DP 170/2000	
E-58 ENG6 ENG INLAND FOREST MGMT 621		08/23	DONAVON MAUPIN	2	DP 170/0700	DP 170/2000	
E-87 ENG6 CAHOON		08/31	DANIEL BLACKWOLF	3	DP 170/0700	DP 170/2000	
E-89 ENG6 CAHOON		08/31	JOSEPH KAULEY	3	DP 170/0700	DP 170/2000	
E-140 ENG6 NCF-E613		09/03	DAVID PERKINS	7	DP 170/0700	DP 170/2000	
E-1 DZR4 TAYLOR & SON		08/27	DAVE TAYLOR	1	DP 170/0700	DP 170/2000	
E-80 EXC2 ALTERED ASPECTS		08/30	JAY JEFFERS	2	DP 170/0700	DP 170/2000	
E-90 EXC2 ALTERED ASPECTS		09/01	BLAKE LINDSAY	2	DP 170/0700	DP 170/2000	
E-4 WTS2 MARTIN		08/28	CRAIG MARTIN	1	DP 170/0700	DP 170/2000	
E-5 WTS2 RICHARDSON TREE CARE		08/26	SARAH JIMENEZ	2	DP 170/0700	DP 170/2000	
8. Division/Group Communication Summary							
Function	Channel	RX Frequency N/W	RX Tone/NAC	TX Frequency N/W	TX Tone/NAC	Mode	
TACTICAL	5	168.2500	110.9	168.2500	110.9	A	
COMMAND	7	168.5000	110.9	164.8750	110.9	A	
COMMAND	8	170.9750	110.9	168.7000	110.9	A	
AIR TO GROUND	14	171.4250		171.4250		A	
AIR TO GROUND	15	171.7750		171.7750		A	
9. Prepared By (Resource Unit Leader)		Approved By (Planning Section Chief)			Date	Time	
M.J. CRANDALL		JOHN GUBEL			08/20/2025	0929	

Division/Group Assignment List (ICS 204 WF)

Controlled Unclassified Information//Basic

1. Incident Name:				3.			
SUNSET				Branch:		Division/Group:	
2. Operational Period:				STRUCTURE			
Date/Time From: 08/21/2025 0600 THU		Date/Time To: 08/21/2025 2200 THU					
4. Operations Personnel							
PLANNING OPS		GREG SCHENK		LINE OPS		KEVIN SMITH	
DIVISION/GROUP SUPERVISOR		MIKE KING CHARLIE MCDONALD (T)		SAFETY		ADAM CARR JONATHAN WHITE	
5. Resources Assigned this Period							
Strike Team / Task Force / Resource Designator		LWD	Leader	Number Persons	Drop Off PT./Time	Pick Up PT./Time	
O-23 TFLD BRIAN EVANS		08/27		1	ICP/0630	ICP/2030	
O-25 TFLD JEFF ARMSTRONG		08/24		1	ICP/0630	ICP/2030	
TFLD JOSH DELAMARIAN				1	ICP/0630	ICP/2030	
E-21 ENG6 AMERICAN FIRE CO		08/31	QUINTON WHITTENMORE	3	ICP/0630	ICP/2030	
E-88 ENG6 CAHOON		09/01	TREVOR SCOTT	3	ICP/0630	ICP/2030	
E-5006 ENG6 TIMBERLAKE FIRE - B-61		08/30		3	ICP/0630	ICP/2030	
E-5007 ENG6 WORLEY FD-BRUSH 441					ICP/0630	ICP/2030	
E-5008 ENG3 MICA KIDD ISLAND E-21		09/01	NICHLAS DUZET	3	ICP/0630	ICP/2030	
E-5009 ENG6 NORTHSIDE RFD 1451		08/30		3	ICP/0630	ICP/2030	
E-59 WTS2 SHANE CAMPBELL TRUCKING LLC		08/31	EVERETT HAMMOND	1	ICP/0630	ICP/2030	
E-60 WTS2 SHANE CAMPBELL TRUCKING LLC		08/31	SHANE CAMPBELL	1	ICP/0630	ICP/2030	
6. Control Operations/Work Assignments:							
Task: Continue to scout for indirect control line opportunities, implement structure protection as needed and continue with structure triage.							
Purpose: To limit impacts to infrastructure and other critical values at risk.							
End State: Impacts to critical values at risk are minimized while utilizing deliberate risk assessments.							
7. Special Instructions:							
8. Division/Group Communication Summary							
Function	Channel	RX Frequency N/W	RX Tone/NAC	TX Frequency N/W	TX Tone/NAC	Mode	
TACTICAL	6	166.7750	110.9	166.7750	110.9	A	
COMMAND	7	168.5000	110.9	164.8750	110.9	A	
COMMAND	8	170.9750	110.9	168.7000	110.9	A	
AIR TO GROUND	14	171.4250		171.4250		A	
AIR TO GROUND	15	171.7750		171.7750		A	
9. Prepared By (Resource Unit Leader)			Approved By (Planning Section Chief)		Date	Time	
M.J. CRANDALL			JOHN GUBEL		08/20/2025	0929	

Division/Group Assignment List (ICS 204 WF)
Controlled Unclassified Information//Basic

1. Incident Name:				3.			
SUNSET				Branch:		Division/Group: <div style="font-size: 24pt; font-weight: bold; text-align: center;">STAGING</div>	
2. Operational Period:							
Date/Time From: 08/21/2025 0600 THU		Date/Time To: 08/21/2025 2200 THU					
4. Operations Personnel							
PLANNING OPS		GREG SCHENK		LINE OPS		KEVIN SMITH	
DIVISION/GROUP SUPERVISOR				SAFETY		ADAM CARR JONATHAN WHITE	
5. Resources Assigned this Period							
Strike Team / Task Force / Resource Designator		LWD	Leader	Number Persons	Drop Off PT./Time	Pick Up PT./Time	
E-132 WTS2 MURRY		09/02		2	ICP/0630	ICP/2030	
E-47 EXC2 EQUIPMENT TECHNOLOGIES		08/28	DYLAN YARNELL	2	ICP/0630	ICP/2030	
6. Control Operations/Work Assignments:							
7. Special Instructions:							
8. Division/Group Communication Summary							
Function	Channel	RX Frequency N/W	RX Tone/NAC	TX Frequency N/W	TX Tone/NAC	Mode	
COMMAND							
TACTICAL							
LOGISTICS							
AIR TO GROUND							
9. Prepared By (Resource Unit Leader)		Approved By (Planning Section Chief)			Date	Time	
M.J. CRANDALL		JOHN GUBEL			08/20/2025	0929	

AIR OPERATIONS SUMMARY ICS-220						Time Prepared 1900		Date Prepared 8/20/2025		Prepared By Jeff Polack - AOB			
Incident Name / Number Sunset Fire ID-POS-000630		Sunrise 0550	Sunset 1948	"Pumpkin": 2018		Shutdown 2000		Operational Period –Date 8/21/2025		Operational Period – Time 0600-2200			
General Remarks, Safety Notes, Hazards, Air Operations Special Equipment, etc. - Request all (fixed & rotor wing) aviation resources thru assigned Divisions. Line Ops will contact and order fix-wing thru Air Operations if Air Attack is not on station over fire. - Non-UAS aircraft will cease tactical operations at sun down due to shadows on the lake and steep terrain. Flights after sundown will be to ferry back to base only. - Sunset Fire resources have IA responsibility within TFR. - UAS Operations as requested. -Refer to IRPG page 74 for "Directing Retardant and Bucket Drops".						Airport /Helibase Info		TFR/NOTAM Information		Extraction Info (helicopter) Hoist: Two Bear Air located at Glacier Park Intl. Airport (GPI), Bell 429, approx. 94 mi GPI to Sunset Fire area Short Haul: Central MT. Helitack located at TBD, 45nm to Sunset Fire Request Procedure: Order through Coeur d'Alene Dispatch			
						Name Coeur d'Alene Latitude 47 46.46' Longitude 116 49.17' Elevation 2320'		TFR 5/9804 Surface to 10000', freq 118.9 24 Hrs. in support of upcoming UAS Operations					
						Name Sand Point Latitude 48 17.97' Longitude 116 33.61' Elevation 2131							
						Email costs to: 2025.sunset.finance@firenet.gov		http://tfr.faa.gov/tfr2/list.html					
Frequencies	RX	Tone	TX	Tone	AM/FM	Position	Name	Phone	Remarks				
						Dispatch	ID-CDC (Coeur d'Alene)	208-772-3283					
A/G Primary	171.4250		171.4250		FM	Dispatch							
A/G Secondary	171.7750		171.7750		FM	IPF FAO	James Grasham	208-660-4139					
						IDL AO	Cory Ivy	208-982-1354					
						AOBD	Steve Croy	540-230-2568					
						AOBD	Jeff Polack	208-813-3447					
National Flt Following	168.6500	110.9	168.6500	110.9	FM								
Air Guard	168.6250		168.6250	110.9	FM								
Incident Specific:													
Air / Air Primary	118.9		118.9		AM	HMGB 54H	Rob Cole	406-461-4777					
Air / Air Secondary	127.2500		127.2500		AM	HMGB 82WL	Clinton Bloom	208-610-9754					
						HMGB 366RA	Jonathan Edwards	208-859-9516					
						HMGB 658HA	Taylor Hess	269-845-5510					
						HMGB 319WA	John Vonk	406-209-7024					
						UASL	Shane Ralston	406-396-3526					
HELICOPTERS						TANKERS / SCOOPERS							
FAA #	Type	Make/Model	Helibase	Avail	Start	Remarks	FAA #	TYPE	Make/Model	Base	Avail	Start	Remarks
54H	3	B-407	COE	0900	0900	Forest IA, Recon							
82WL	1	UH-60	COE	0900	0900	Bucket	Order as Needed						
366RA	1	CH-47	SZT	0900	0900	Bucket							
319WA	1	Kmax	SZT	0900	0900	Bucket (R6 3 Day Loan)							
658HA	2	UH-1H	COE	0900	0900	Bucket							
44HX	3	B407		0900	0900	Short Haul, Recon, Tactical							
UNMANNED AIRCRAFT SYSTEMS						FIXED WING							
FAA #	Type	Model	Call Sign	Avail	Start	Remarks	FAA #	Type	Make/Model	Base	Av	Start	Remarks
	T-3 T-3	Alta-X Alta-X	UR31 UR33	1000	As Requested	Sunset UAS Mod Baker River IHC	N721TB		AC-690B	COE	1000	0900	Sunset Air Attack

INCIDENT RADIO COMMUNICATIONS PLAN I-205				1. INCIDENT NAME			2. DATE/TIME PREPARED			3. OPERATIONAL PERIOD DATE/TIME		
				SUNSET			8/20/2025			8/21/25 0600 THRU 2200		
4. BASIC RADIO CHANNEL UTILIZATION												
Ch #	Function	Channel Name	Assignment	RX Freq	N/W	RX Tone/NAC	TX Freq	N/W	TX Tone/NAC	Mode Analog (A) Digital (D) Mixed (M)	Remarks	
1	TAC	TAC 1	DIV A	168.0500	N	110.9	168.0500	N	110.9	A	DIV A	
2	TAC	TAC 2	DIV F/M	168.2000	N	110.9	168.2000	N	110.9	A	DIV F/M	
3	TAC	TAC 3	DIV R	168.6000	N	110.9	168.6000	N	110.9	A	DIV R	
4	TAC	TAC 4	DIV T	166.7250	N	110.9	166.7250	N	110.9	A	DIV T	
5	TAC	TAC 5	DIV Z	168.2500	N	110.9	168.2500	N	110.9	A	DIV Z	
6	TAC	TAC 6	STRUCTURE	166.7750	N	110.9	166.7750	N	110.9	A	STRUCTURE GROUP	
7	COMMAND	CMD 7	COMMAND	168.5000	N	110.9	164.8750	N	110.9	A	CAPE HORN	
8	COMMAND	CMD 8	COMMAND	170.9750	N	110.9	168.7000	N	110.9	A	LITTLE BLACK TAIL	
9	COMMAND	CMD 9	COMMAND	170.6875	N	110.9	166.5750	N	110.9	A	BARTON HUMP	
10	DISPATCH	SCHWEITZER	LOCAL REPEATER	159.3375	N	100.0	151.4375	N	136.5	A	IDL SCHWEITZER TO COEUR D ALEANE DISPATCH	
11	DISPATCH	HOODOO	LOCAL REPEATER	159.4500	N	123.0	151.2200	N	123.0	A	IDL HOODOO TO COEUR D ALEANE DISPATCH	
12	TAC	IDL DIR 2	IA TAC	159.2850	N	77.0	159.2850	N	77.0	A	IDL DIR 2 (IA TAC)	
13	TAC	VMED 28	MEDIVAC	155.3400	N		155.3400	N		A	AIR MED	
14	A/G	A/G PRI	AIR TO GROUND	171.4250	N		171.4250	N		A	A/G PRIMARY	
15	A/G	A/G SEC	AIR TO GROUND	171.7750	N		171.7750	N		A	A/G SECONDARY	
16	AIRGUARD	AIRGUARD	EMERGENCY	168.6250	N		168.6250	N	110.9	A	EMERGENCY	
5. Special Instructions:		RAWS station placed at Little Black Tail Mountain, RX Freq 163.3500, TX Freq 163.3500, Mode: Analog, DTMF Tone 0001 for weather information										
6. I-205 Prepared By: Communications Unit Leader				Name: Mike Scherer				Signature: PAUL SCHERER				

Digitally signed by PAUL
SCHERER
Date: 2025.08.20 16:59:28 -0700



Safety Message

TAKING A NAP NEAR THE FIRELINE

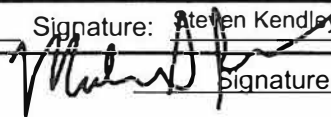
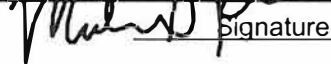
Firefighting is often exhausting work and firefighters can find themselves needing to sleep while on the fireline. Before pausing to rest, firefighters must weigh the following considerations:

- Are lookouts posted? Discuss who that lookout can be. Can the lookout on the knob across the draw watch over you or does it need to be your partner on the fireline alternating rest times?
- Is the area free of hazards? (Falling snags or rolling materials) Discuss what you need to do to create a safe resting area.
- Are you still within agency work and rest guidelines? Review what these guidelines are.
- Does your crew need a break? Have they been pushed too hard? Talk about situations where you need to simply take yourself and/or your crew off the fire for uninterrupted rest.
- To reduce risks:
 - Keep lookouts posted; rotate lookouts.
 - Communicate crew conditions and status to supervisor or chain-of-command contact. Have firefighters discuss ways that they find to rest on the fireline and suggestions for methods to alternate shifts for more effective firefighting.

Safety is your Responsibility!

Northern Rockies Complex Incident Management Team 5

MEDICAL PLAN (ICS 206)

1. Incident Name: Sunset		2. Operational Period: Date From: 08/21/25 Time From: 0600		Date To: 08/21/25 Time To: 2200			
3. Air Ambulances:							
Name	Location	Contact Number(s)/Frequency	Paramedics on Site?				
Life Flight Network	Sandpoint and Coeur d'Alene, ID	911	<input checked="" type="checkbox"/> Yes <input type="checkbox"/> No				
Two Bear Air	Kalispell, MT (hoist)	911	<input type="checkbox"/> Yes <input checked="" type="checkbox"/> No				
Central Montana Helitack	Libby, MT (shorthaul)	CDA Dispatch	<input type="checkbox"/> Yes <input checked="" type="checkbox"/> No				
			<input type="checkbox"/> Yes <input type="checkbox"/> No				
			<input type="checkbox"/> Yes <input type="checkbox"/> No				
			<input type="checkbox"/> Yes <input type="checkbox"/> No				
4. Transportation (indicate air or ground):							
Ambulance Service	Location	Contact Number(s)/Frequency	Level of Service				
E-16 Houser Lake	Div. Alpha-Staged Careywood Fire Station	Command	<input type="checkbox"/> ALS <input checked="" type="checkbox"/> BLS				
E-42 Freemont Ambulance	Div. Romeo-Staged at Talache Road	Command	<input checked="" type="checkbox"/> ALS <input type="checkbox"/> BLS				
			<input type="checkbox"/> ALS <input type="checkbox"/> BLS				
			<input type="checkbox"/> ALS <input type="checkbox"/> BLS				
5. Hospitals:							
Hospital Name	Address, Latitude & Longitude if Helipad	Contact Number(s)/Frequency	Travel Time		Trauma Center	Burn Center	Helipad
			Air	Ground			
Kootenai Health Coeur d'Alene, ID	LAT- N 47 41 45.658 LONG- W 116 47 41.684	208-625-4000	30 min	75 min	<input checked="" type="checkbox"/> Yes Level: 2	<input type="checkbox"/> Yes <input checked="" type="checkbox"/> No	<input checked="" type="checkbox"/> Yes <input type="checkbox"/> No
Bonner General Sandpoint ID	LAT- N 48 16.650 LONG- W 116 32.980	208-263-1441	30 min	60 min	<input type="checkbox"/> Yes Level: 4	<input type="checkbox"/> Yes <input checked="" type="checkbox"/> No	<input checked="" type="checkbox"/> Yes <input type="checkbox"/> No
NW Urgent Care	7173 E Super 1 Loop, Suite A, Athol, ID 83801	208-561-9970		30 min	<input type="checkbox"/> Yes Level: _____	<input type="checkbox"/> Yes <input checked="" type="checkbox"/> No	<input type="checkbox"/> Yes <input checked="" type="checkbox"/> No
					<input type="checkbox"/> Yes Level: _____	<input type="checkbox"/> Yes <input type="checkbox"/> No	<input type="checkbox"/> Yes <input type="checkbox"/> No
					<input type="checkbox"/> Yes Level: _____	<input type="checkbox"/> Yes <input type="checkbox"/> No	<input type="checkbox"/> Yes <input type="checkbox"/> No
6. Special Medical Emergency Procedures: Bonner General Helipad can only accommodate Type 3 ships. Type 2 ships will need to land at Sandpoint Airport (KSZT) and transfer to local ambulance. Airport designators: Sandpoint - KSZT Coeur d'Alene - COE							
<input checked="" type="checkbox"/> Check box if aviation assets are utilized for rescue. If assets are used, coordinate with Air Operations.							
7. Prepared by (Medical Unit Leader): Name: Steven Kendley					Signature:  <small>Digitally signed by Steven Kendley Date: 2025.08.19 09:21:34 -0600</small>		
8. Approved by (Safety Officer): Name: Michael S Smithj					Signature: 		
ICS 206	IAP Page _____	Date/Time: 8/20/2025					

FINANCE MESSAGE

8/21/25

\$\$ Hey, Federal Friends....don't forget, it's Times Week. \$\$



Will the following resources please come visit us under the Jolly Roger:

- E-1 Taylor&Son
- E-48 Akre Logging
- E-85 Anchor Point Fuels & Services, LLC
- E-90 Altered Aspects
- E-16 Hauser Lake BLS
- E-17 Unknown

Holler or come see us with any questions!

Finance Phone: 208.867.9570

Finance Email: 2025.sunset.finance@firenet.gov



Information for Trainees

- 1) If you are a trainee, please ensure you have an initiated task book from your home unit. Please contact your home unit to initiate a new task book.
- 2) When checking in on the incident, please ensure that you have identified yourself as a 'trainee'.
- 3) Work with your Trainer/Evaluator on this fire to identify tasks you will accomplish on the fire.
- 4) Ensure your Trainer(s)/Evaluator(s) have initialed completed tasks in your task book.
- 5) Before demobilization, ensure you have an evaluation record completed at the back of the task book, and you receive a personal evaluation.
- 6) Be sure to check out with the Training Coordinator in the Planning Section prior to leaving the incident.

Copies of your training documents (Evaluation Record and ICS 225 Individual Performance Rating) may be sent via email to: 2025.sunset.plans@firenet.gov.

For questions: please see John Gubel, Training Coordinator in the Plans yurt.

Division Supply Order

Order Number:		Date -		Division -	
Order taken in Communications by:				RADO or COML confirmation:	
DIVS Supervisor:				Date & Time Needed:	
Delivery Contact:				Delivery Location:	
Cell Phone #:				UTM	
Radio Channel Number:				Lat: _____ Long: _____	
Mode of Delivery (Circle Means):		Ground Support		DP/LZ:	
Division will pick up		Deliver to Helibase		Other:	
SPUL Confirmation can be filled as needed (Circle): Yes or No - Requiring at least 24 hours to fill.					
Item	Description:	Quantity	Comments		
	Hose Lay Kit , 1000 Feet = (10) 1 1/2" Hose; and 5 Each of: 1" Hose, 1 1/2" Wyes, 1 1/2" to 1" Reducers, and 1" Forester Nozzles				
1	1000 Feet	4	4000 Feet		
2	2000 Feet	5	5000 Feet		
3	3000 Feet	6	6000 Feet		
	Garden Hose Kit , 500 Feet = (10) 3/4" Hose, and (5 Each): 3/4" Wye, 3/4" Shutoff, 3/4" Nozzle, 1" Wye, and 1" to 3/4" Reducers)				
7	500 Feet	10	3000 Feet		
8	1000 Feet	11	4000 Feet		
9	2000 Feet	12	5000 Feet		
Water Handling Equipment:		Item #	Description	Quantity	
13	Hose: 1 1/2" (100')	LG	Line Tools:		
14	1" (100')	LG	40 Pulaski	EA	
15	3/4" (50' Toy/Garden)	LG	41 Combi	EA	
16	Gated Wye: 1 1/2"	EA	42 McCloud	EA	
17	1"	EA	43 Shovel	EA	
18	3/4"	EA	44 Water: Cubies	EA	
19	Reducer: 1 1/2" X 1"	EA	45 Bottled	CS	
20	1" X 3/4"	EA	46 Gatorade	CS	
21	Nozzle: 1" Forester	EA	47 MRE's	BX	
22	1" Mystery (KK)	EA	48 Flagging: Lime Green	RO	
23	1 1/2" Red Barrel	EA	49 Pink	RO	
24	3/4" Brass	50	Orange	RO	
25	Shutoff Values: 3/4"	EA	51 Killer Tree	RO	
26	Pumpkin or Porta-Tank, 1800 gal.	EA	52 Wrap, Structural	RO	
27	Blivets, Slingable 55 Gal	EA	53 Other:		
28	Mopup Kits 3 Person	EA	54		
29	Backpack Pumps	EA	55		
30	Sprinkler Kits	EA	56		
31	Foam (5 GALS)	PL	57		
32	Mark III Kits	KT	58		
33	Drip Torch	EA	59		
34	Fusees (72/Case)	CS	60		
35	Chainsaw Kit	KT	61 Bar Oil	Gal	
36	Fuel, 5 gallons:	Gas	Can	62 Diesel, 5 gallon	Can
37	Mark III (20:1)		Can	63	QT
38	Chainsaw (50:1)	Mixed	Can	64	BT
			Can	65	BT
39	Drip Torch (3:2)		Can		

Northern Rockies Chainsaw Parts Order Form

Please see the back page for part order numbers and items requiring an approved Property Loss and Damage form.

Name:			Gen. Msg #:		
Resource #:			Request Date:		
Contact #:			Need by Date/Time:		
TO BE FILLED BY: (circle one):		<input type="checkbox"/> Buying Team	<input type="checkbox"/> Home Unit	<input type="checkbox"/> Cache	

Chainsaw Information

Make (circle one or fill in):	<input type="checkbox"/> Stihl	<input type="checkbox"/> Husqvarna	<input type="checkbox"/> Other:				
Model:							
Serial #							
Bar Length (circle one):	<input type="checkbox"/> 20"	<input type="checkbox"/> 24"	<input type="checkbox"/> 28"	<input type="checkbox"/> 30"	<input type="checkbox"/> 32"	<input type="checkbox"/> 36"	<input type="checkbox"/> Other:

Request:

[illegible]

For Sprocket & Chain Orders (circle one or fill in):

# of Drivers:									
Pitch (*):		3/8"		.325"		Other:			
Gauge:		.50		.063		Other:			
Tooth Layout:		Full		Semi-Skip		Full Skip			
Tooth Cut:		Chisel		Semi-Chisel		Other:			
# of Sprocket Teeth:									

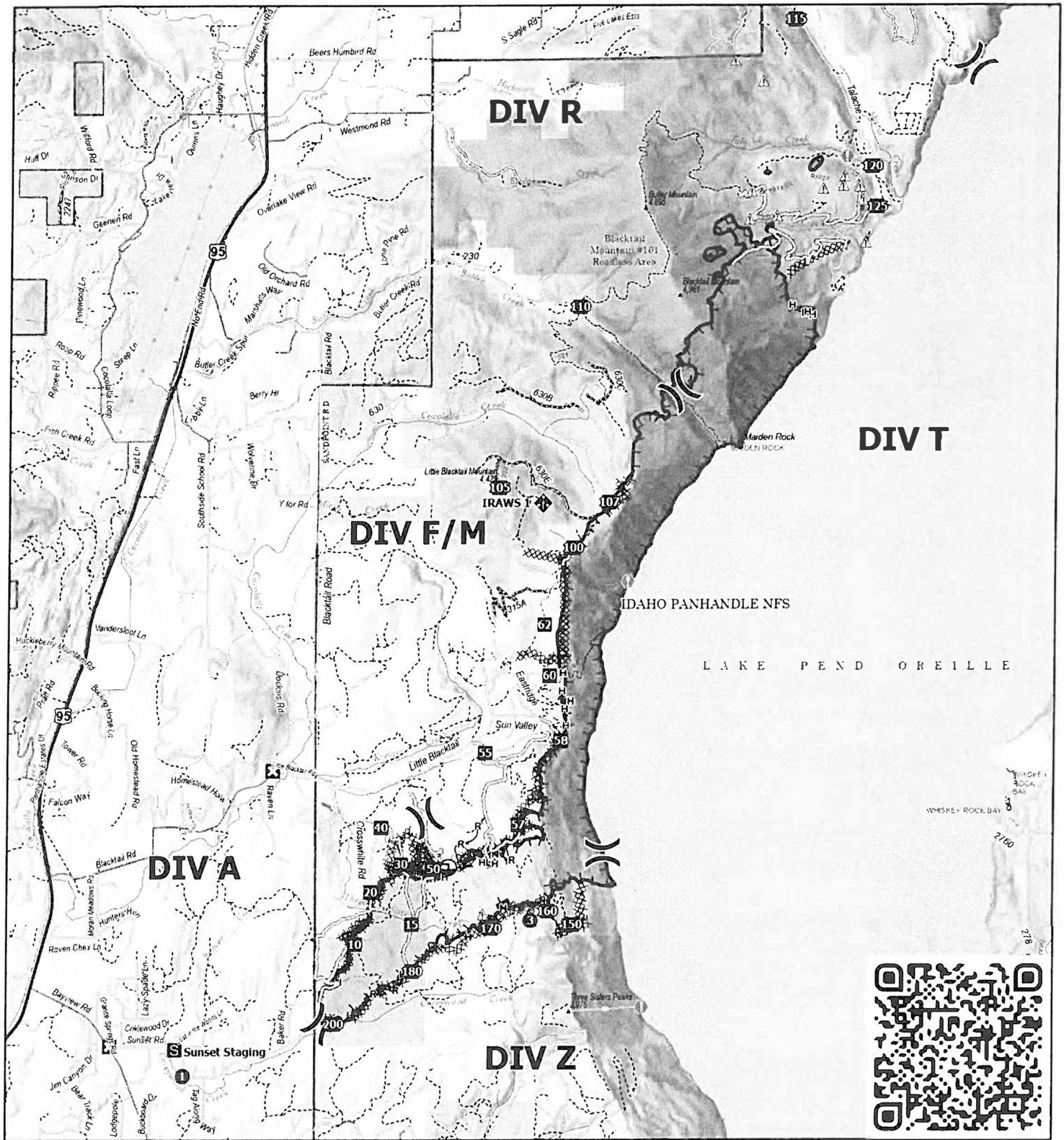
☐ Concurrence (Line Supervisor i.e. DIVS): _____

☐ Supply Unit Leader has checked that the items ordered do not need an approved Property Loss & Damage Form, or that the approval is attached. (*Supply Unit Leader checks box and initials here:* _____).

First source of supply is Cache, shaded blocks indicate items available thru Northern Rockies Cache. ¹ Items requiring an approved Property Loss and Damage form are in a separate list at the bottom.												
PART	034/341	360/MS360	MS361	MS362	038/381	044/MS440	MS441	460/MS461	MS462	0640/650	MS660	MS880
Spark Plug (NFES# 000344)	Bosch WSR6F NGK BPMR7A Champion RCJ6Y	Bosch WSR6F NGK BPMR7A Champion RCJ6Y	Bosch WSR6F NGK BPMR7A Champion RCJ6Y	Bosch WSR6F NGK BPMR7A Champion RCJ6Y	Bosch WSR6F NGK BPMR7A Champion RCJ6Y	Bosch WSR6F NGK BPMR7A Champion RCJ6Y	Bosch WSR6F NGK BPMR7A Champion RCJ6Y	Bosch WSR6F NGK BPMR7A Champion RCJ6Y	Bosch WSR6F NGK BPMR7A Champion RCJ6Y	Bosch WSR6F NGK BPMR7A Champion RCJ6Y	Bosch WSR6F NGK BPMR7A Champion RCJ6Y	Bosch WSR6F NGK BPMR7A Champion RCJ6Y
Needle Cage Bearing (NFES# 066565)	9512-933-2380	9512-933-2380	9512-933-2380	9512-933-2380	9512-933-3150	9512-933-2380	9512-933-2380	9512-933-2380	9512-933-2380	9512-933-2380	9512-933-2382	9512-933-3170
Retaining Washer for Rim Sprocket	0000-958-1022	0000-958-1022	0000-958-1032	0000-958-1032	0000-958-1231	0000-958-1032	0000-958-1032	0000-958-1032	0000-958-1032	0000-958-1032	0000-958-1032	0000-958-1236
E Clip (NFES# 066517)	9460-624-0801	9460-624-0801	9460-624-0801	9460-624-0801	9460-624-1001	9460-624-0801	9460-624-0801	9460-624-0801	9460-624-0801	9460-624-0801	9460-624-0801	9460-624-1001
Fuel Filter	0000-350-3504	0000-350-3504	0000-350-3504	0000-350-3504	0000-350-3504	0000-350-3504	0000-350-3504	0000-350-3504	0000-350-3518	0000-350-3504	0000-350-3500	0000-350-3504
Air Filter - HD (NFES# 066756)	1125-120-1626	1125-120-1612	1135-120-1600	1140-140-4401	1119-120-1611	0000-140-4402	0000-120-1654	0000-120-1654	1142-140-4402	0000-140-4402	0000-140-4402	0000-140-4402
Pre Filter - OEM	N/A	N/A	N/A	N/A	1119-120-1500	0000-141-0300	0000-141-0300	0000-141-0300	N/A	0000-141-0300	0000-141-0300	0000-141-0300
Bar Nut (NFES# 06661)	0000-955-0801	0000-955-0801	0000-955-0801	0000-955-0801	0000-955-0801	0000-955-0801	0000-955-0801	0000-955-0801	0000-995-0803	0000-955-0801	0000-955-0801	0000-955-0903
Inner Slide Plate	1122-664-1000	1122-664-1000	1122-664-1000	1122-664-1000	1119-664-1000	1128-664-1001	1138-664-1000	1128-664-1001	1128-664-1001	1128-664-1001	1128-664-1001	1124-664-1001
STIHL RAPID - Super (RS)												
Chain 3/8" PITCH - .050" GA - DR												
20" - 72 DR	3623-005-0072	3623-005-0072	3623-005-0072	3623-005-0072	3623-005-0072	3623-005-0072	3623-005-0072	3623-005-0072	3623-005-0072	3623-005-0072	3623-005-0072	3623-005-0072
25" - 84 DR (NFES# 006500)	3623-005-0084	3623-005-0084	3623-005-0084	3623-005-0084	3623-005-0084	3623-005-0084	3623-005-0084	3623-005-0084	3623-005-0084	3623-005-0084	3623-005-0084	3623-005-0084
28" - 91 DR	3623-005-0091	3623-005-0091	3623-005-0091	3623-005-0091	3623-005-0091	3623-005-0091	3623-005-0091	3623-005-0091	3623-005-0091	3623-005-0091	3623-005-0091	3623-005-0091
32" - 105 DR	N/A	N/A	N/A	N/A	N/A	3623-005-0105	3623-005-0105	3623-005-0105	3623-005-0105	3623-005-0105	3623-005-0105	3623-005-0105
STIHL RAPID - Super - Full Skip (RSF)												
Chain 3/8" PITCH - .050" GA - DR												
20" - 72 DR	N/A	3676-005-0072	3676-005-0072	3676-005-0072	3676-005-0072	3676-005-0072	3676-005-0072	3676-005-0072	3676-005-0072	3676-005-0072	3676-005-0072	3676-005-0072
25" - 84 DR	3676-005-0084	3676-005-0084	3676-005-0084	3676-005-0084	3676-005-0084	3676-005-0084	3676-005-0084	3676-005-0084	3676-005-0084	3676-005-0084	3676-005-0084	3676-005-0084
28" - 91 DR	3676-005-0091	3676-005-0091	3676-005-0091	3676-005-0091	3676-005-0091	3676-005-0091	3676-005-0091	3676-005-0091	3676-005-0091	3676-005-0091	3676-005-0091	3676-005-0091
32" - 105 DR	N/A	N/A	N/A	N/A	N/A	3676-005-0105	3676-005-0105	3676-005-0105	3676-005-0105	3676-005-0105	3676-005-0105	3676-005-0105
Bar oil: Quantity - Gallon	NFES # 1880											
Bar oil: Quantity - Quart	NFES # 1869											
2 Cycle Oil: Quantity - Quart	NFES # 0341											

The following parts require an approved Property Loss & Damage form prior to ordering:

Guide Bars - 3/8" - .050" GA (STIHL ROLLOMATIC - ES)												
20"	3003-000-8822	3003-000-8822	3003-000-8822	3003-000-8822	3003-000-8822	3003-000-8822	3003-000-8822	3003-000-8822	3003-000-8822	3003-000-8822	3003-000-8822	3003-000-8822
25" (NFES# 066584)	N/A	3003-000-8830	3003-000-8830	3003-000-8830	3003-000-8830	3003-000-8830	3003-000-8830	3003-000-8830	3003-000-8830	3003-000-8830	3003-000-8830	3003-000-8830
28"	N/A	N/A	N/A	N/A	N/A	3003-000-8838	3003-000-8838	3003-000-8838	3003-000-8838	3003-000-8838	3003-000-8838	3003-000-8838
32"	N/A	N/A	N/A	N/A	N/A	3003-000-8846	3003-000-8846	3003-000-8846	3003-000-8846	3003-000-8846	3003-000-8846	3003-000-8846
Rim Sprocket Kit 3/8 - 7T	1125-007-1040	1125-007-1223	1128-007-1000	1135-007-1002	1119-007-1003	1128-007-1000	1128-007-1000	1128-007-1017	1128-007-1000	1122-007-1000	1122-007-1000	N/A
Clutch Drum	Order Sprocket Kit	Order Sprocket Kit	Order Sprocket Kit	Order Sprocket Kit	Order Sprocket Kit	Order Sprocket Kit	Order Sprocket Kit	Order Sprocket Kit	Order Sprocket Kit	Order Sprocket Kit	Order Sprocket Kit	Order Sprocket Kit
Rim Sprocket 3/8 7T (NFES# 066652)	0000-642-1231	0000-642-1023	0000-642-1223	0000-642-1223	0000-642-1223	0000-642-1223	0000-642-1223	0000-642-1223	0000-642-1223	0000-642-1223	0000-642-1223	N/A
Rim sprocket kit 3/8 - 8T	N/A	N/A	1128-007-1001	1128-007-1001	N/A	1128-007-1001	1128-007-1001	1128-007-1001	1128-007-1001	1122-007-1001	1122-007-1001	1124-007-1025
Clutch Drum	Order Sprocket Kit	Order Sprocket Kit	Order Sprocket Kit	Order Sprocket Kit	Order Sprocket Kit	Order Sprocket Kit	Order Sprocket Kit	Order Sprocket Kit	Order Sprocket Kit	Order Sprocket Kit	Order Sprocket Kit	Order Sprocket Kit
Rim Sprocket 3/8 - 8T	N/A	0000-642-1216	0000-642-1216	0000-642-1216	0000-642-1216	0000-642-1216	0000-642-1216	0000-642-1216	0000-642-1216	0000-642-1216	0000-642-1216	0000-642-1216
Clutch	1127-160-2050	1125-160-2005	1128-160-2004	1138-160-2010	1119-160-2000	1128-160-2001	1138-160-2010	1128-160-2004	1142-160-2000	1122-160-2005	1122-160-2002	1124-160-2005
Chain Adjuster Kit	1125-007-1036	1125-007-1021	1125-007-1021	1125-007-1021	1118-664-1600	1125-007-1021	1125-007-1021	1125-007-1021	1125-007-1021	1125-007-1021	1125-007-1021	1124-007-1008
Bump Strip	1121-648-6610	1121-648-6610	1121-648-6610	1121-648-6610	1121-648-6610	1121-648-6610	1121-648-6610	1121-648-6610	1121-648-6610	1121-648-6610	1121-648-6610	1121-648-6610
Starter Rope W/handle	1128-190-3400	1128-190-3400	1128-190-3400	1128-190-3400	1128-190-3400	1128-190-3400	1128-190-3400	1128-190-3400	1128-190-3400	1128-190-3400	1128-190-3400	1128-190-3400
Worm Gear (Oiler)	1125-640-7110	1125-640-7110	1128-640-7112	1128-640-7112	1119-642-1501	1128 640 7112	1128 640 7112	1128 640 7112	1128-640-7112	1122-640-7105	1122-640-7105	1124-640-7512
Manifold Boot	1125 141 2200	1125 141 2200	1135 141 2200	1140 140 2503	1119 140 2500	1128 141 2204	1138 140 2508	1128 141 2204	1142 141 2200	1122 141 2200	1122 141 2201	1124 141 2202



IAP

Sunset

IDPOS-000630

08/21/2025 Day

3.208 acres at 08/18/2025 0015

0 0.75 1.5

Miles



1:40,000 | PREP: 10/20/2025 1011

IR image: Interp05040

North Arrow: 1993 Datum: LatLong Grid



Hazard



Helispot



Division Break



Drop Point



Closure



Staging Area



Draft Site



Mobile



Weather Unit



Value at Risk



Completed Dozer Line



Completed Fuel Break



Completed Hand Line



Completed Construction Line



Completed Road as Line



Access Route



Contained Fire Edge



Uncontained Fire Edge



Wildfire Perimeter



Trail



Primary Highway



Secondary Paved



Secondary Dirt



Dirt (Not Paved)



Road, Not Maintained for Passenger Car



Spur



Primitive



FS Closed Road



Ground Line



Natural Gas



Pipelines



USFS



Roadless Areas



Forest Service Lands



Bureau of Land Management



State



Administrative



FS Boundary

MEDICAL PLAN (ICS 206 WF)

Controlled Unclassified Information//Basic

Medical Incident Report

FOR A NON-EMERGENCY INCIDENT, WORK THROUGH CHAIN OF COMMAND TO REPORT AND TRANSPORT INJURED PERSONNEL AS NECESSARY.

FOR A MEDICAL EMERGENCY: IDENTIFY ON-SCENE INCIDENT COMMANDER BY NAME AND POSITION AND ANNOUNCE "MEDICAL EMERGENCY" TO INITIATE RESPONSE FROM IMT COMMUNICATIONS/DISPATCH.

Use the following items to communicate situation to communications/dispatch.

1. CONTACT COMMUNICATIONS / DISPATCH (Verify correct frequency prior to starting report)

Ex: "Communications, Div. Alpha. Stand-by for Emergency Traffic."

2. INCIDENT STATUS: Provide incident summary (including number of patients) and command structure.

Ex: "Communications, I have a Red priority patient, unconscious, struck by a falling tree. Requesting air ambulance to Forest Road 1 at (Lat./Long.) This will be the Trout Meadow Medical, IC is TFLD Jones. EMT Smith is providing medical care."

Severity of Emergency / Transport Priority	<input type="checkbox"/> RED / PRIORITY 1 Life or limb threatening injury or illness. Evacuation need is IMMEDIATE Ex: Unconscious, difficulty breathing, bleeding severely, 2° – 3° burns more than 4 palm sizes, heat stroke, disoriented. <input type="checkbox"/> YELLOW / PRIORITY 2 Serious Injury or illness. Evacuation may be DELAYED if necessary. Ex: Significant trauma, unable to walk, 2° – 3° burns not more than 1-3 palm sizes. <input type="checkbox"/> GREEN / PRIORITY 3 Minor Injury or illness. Non-Emergency transport Ex: Sprains, strains, minor heat-related illness.
Nature of Injury or Illness & Mechanism of Injury	Brief Summary of Injury or Illness (Ex: Unconscious, Struck by Falling Tree)
Evacuation Request	Air Ambulance / Short Haul/Hoist Ground Ambulance / Other
Patient Location	Descriptive Location & Lat. / Long. (WGS84)
Incident Name	Geographic Name + Medical (Ex: Trout Meadow Medical)
On-Scene Incident Commander	Name of on-scene IC of Incident within an Incident (Ex: TFLD Jones)
Patient Care	Name of Care Provider (Ex: EMT Smith)

3. INITIAL PATIENT ASSESSMENT: Complete this section for each patient as applicable (start with the most severe patient)

Patient Assessment: See IRPG PAGE 106

Treatment:

4. EVACUATION PLAN:

Evacuation Location (if different): (Descriptive Location (drop point, intersection, etc.) or Lat. / Long.) Patient's ETA to Evacuation Location:

Helispot / Extraction Site Size and Hazards:

5. ADDITIONAL RESOURCES / EQUIPMENT NEEDS:

Example: Paramedic/EMT, crews, immobilization devices, AED, oxygen, trauma bag, IV/fluid(s), splints, rope rescue, wheeled litter, HAZMAT, extrication

6. COMMUNICATIONS: Identify State Air/Ground EMS Frequencies and Hospital Contacts as applicable

Function	Channel Name/Number	Receive (RX)	Tone/NAC *	Transmit (TX)	Tone/NAC *
COMMAND					
AIR-TO-GRND					
TACTICAL					

7. CONTINGENCY: Considerations: If primary options fail, what actions can be implemented in conjunction with primary evacuation method? Be thinking ahead..

8. ADDITIONAL INFORMATION: Updates/Changes, etc.

REMEMBER: Confirm ETAs of resources ordered. Act according to your level of training. Be Alert. Keep Calm. Think Clearly. Act Decisively.