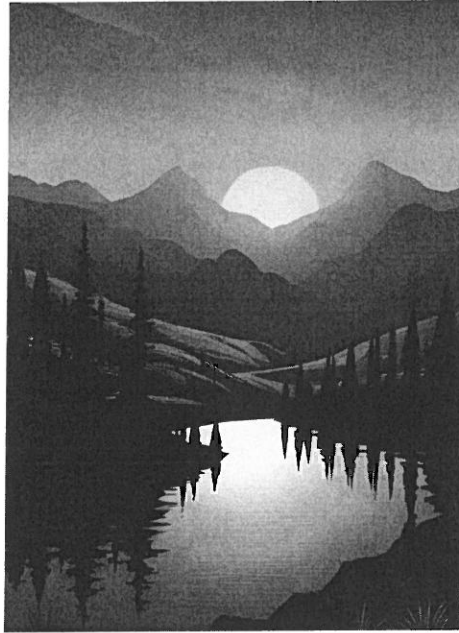


Sunset



Incident Action Plan



Monday August 18, 2025

Operations 0600-2200



For Check-in, Maps & IAP

ID-POS-000630

PNS7RR (1532)

320POS03525

INCIDENT OBJECTIVES

ICS-202

INCIDENT NAME

SUNSET

DATE PREPARED

8/17/2025

TIME PREPARED

2000

OPERATIONAL PERIOD (DATE/TIME)

August 18, 2025, 0600 – 2200

GENERAL CONTROL OBJECTIVES

Incident Objectives:

Implement risk management practices to provide for firefighter and public safety.

Implement the full suppression strategy to keep the fire North of Sunset Road, East of Cross White Road, South of Talache Road, West of Lake Pend Oreille.

Utilize tactics to protect prioritized values, commensurate with responder risk:

1. Private residences and property
2. Critical infrastructure and communications sites
3. US Navy Infrastructure
4. Private/State/Federal timber lands
5. Developed recreation infrastructure on FS/BLM land
6. Heritage sites on FS/BLM land

Manage incident costs commensurate with the values at risk.

Incident Requirements:

Preserve, maintain and foster interagency relationships.

Coordinate routine messaging to the public and identified incident cooperators.

Minimize suppression impacts to heritage resources through coordination with assigned Resource Advisors.

☒ ORGANIZATION LIST (ICS 203)

☒ MEDICAL PLAN (ICS 206 & 206WF)

☒ SPOT WEATHER FORECAST

☒ ASSIGNMENT LIST (ICS 204)

☒ AIR OPS. SUMMARY (ICS 220)

☒ FIRE BEHAVIOR FORECAST

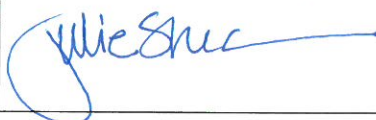
☒ COMMUNICATION PLAN (ICS 205)

☒ SAFETY MESSAGE

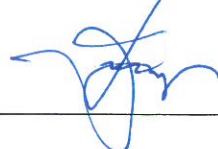
☒ UNIT LOG

ICS 202

PREPARED BY (PLANNING SECTION CHIEF)



APPROVED BY (INCIDENT COMMANDER)



ORGANIZATION ASSIGNMENT LIST		9.	
1. Incident Name SUNSET ID-POS-000630		Planning Ops	Greg Schenk
		Line Ops	Kevin Smith
		Strategic Ops	Paul Diaz
2. Date August 17, 2025	3. Time 2100	a. Branch I - Divisions/Groups	
		Division/Group	A Macker Babb; Jarid Clark (T)
4. Operational Period August 18, 2025, 0600-2200		Division/Group	F/M Dave Maclay-schulte; Mitch Robbins (T)
		Division/Group	R Aaron Jones; Steve Aguirre (T)
5. Incident Commander and Staff		Division/Group	T Scott Drake
Incident Commander	Joe Sampson	Division/Group	Z Chris White
Safety Officer	Adam Carr; Jonathan White; Mike Smith (T); Robert Spence(T)	Structure Group	Ed Wingert; Brian Evans (T)
Information Officer	Terina Hill; Erik Broeder (T)		
Liaison Officer	Kevin Doherty; Geoffrey Bogie		
6. Agency Representatives			
Agency	Name		
IDL	Erik Sjoquist		
BLM	Ray Pease		
USFS	Kevin Knauth; Chris Noyse (T)		
7. Planning Section			
Chief	Julie Shea; John Gubel; Jim Stiteler		
Resources Unit	Patty Bates; MJ Crandall		
Situation Unit	Brett Gore; Brittney Allestad (T)		
Demobilization Unit	Sue Puddy		
Documentation Unit	Elvira Nieves (T)	c. Air Operations Branch	
GISS	Jeremy Hurst; Matt Heller (T)	Air Operations	Steve Croy; Jeff Pollack
IMET	Bob Hoenisch	Air Attack	
FBAN	Mike Pagoaga	Helicopter Coord	
LTAN	Jon Rieck; Todd Erdody	Air Tanker Coord	
ITSS	Michael Harper; Amy Johnson	10. Finance Section	
		Chief	Wendy McCartney; Biddy Simet
8. Logistics Section		Procurement	Tammy Petersen; Stew Williams (T)
Chief	Bill Lauer	Time Unit	Haliegh Stott
Supply Unit	Meghan Carosella	Comp/Claims Unit	Quoya Waters
Ordering Manager	Lynda Murphy; Darcy Wheeler (V)	Cost Unit	Terry Grosbeck
Ground Support	Jim Lane		
Food Unit	Justin Trodick		
Medical Unit	Ray Mines; Sadie Gallaway (T); Steve Kendley; Chris Jacks	Prepared by (Resource Unit Leader) Patty Bates	
Communication Unit	Mike Scherer		
Security Unit	Richard Paine		
Facilities Unit	Pat Nelson		

FORECAST NO. 01

NAME OF INCIDENT: Sunset

FORECAST FOR: Monday Aug 18, 2025

UNIT: IDL-Pend Oreille

TIME AND DATE

FORECAST ISSUED: 1800 Sun Aug 17, 2025

SIGNED: Bob Hoenisch (406) 899-4112

Incident Meteorologist

WEATHER DISCUSSION:

A southwest flow across the Northern Rockies will maintain a gradual warming and drying trend across the region through the next several days with much warmer and drier conditions expected by Thursday and Friday. An embedded weather disturbance tracking across the region this morning will bring clouds and some widely scattered showers through early this afternoon with an isolated thunderstorm possible. Measurable precipitation will be very limited with isolated lightning and erratic wind gusts near showers the main concern. Clouds decrease this afternoon with a few afternoon southwesterly wind gusts as high as 15-20 mph in exposed areas. Temperatures remain near seasonal through Wednesday with much warmer temperatures and lower afternoon humidity developing later this week into the weekend.

TODAY (MONDAY):

WEATHER: Mostly cloudy in the morning with a few showers and an isolated thunderstorm possible. Becoming partly cloudy in the afternoon. (chance of lightning within 10 mi: 15% between 1000-1300)

MAX TEMPERATURES:

2000 FT: 78 – 83

4000 FT: 71 – 76 (little change)

MINIMUM RELATIVE HUMIDITY:

2000 FT: 30 – 35%

4000 FT: 34 – 39% (little change)

20 FOOT WINDS:

Slope/Valley: Variable up to 10 mph in the morning, becoming southwest 5-10 mph with gusts to 16 mph in the afternoon. .

Ridgetop: Northwest 5-12 mph...becoming southwest in the afternoon with gusts to 18 mph.

STABILITY: Weak morning inversion dissipates by 1100 with afternoon mixing to 8000 ft .

CHANCE OF WETTING RAIN: 10% **SMOKE TRANSPORT WIND:** SW 12 mph

MONDAY NIGHT:

WEATHER: Partly cloudy in the evening, then clearing.

MINIMUM TEMPERATURE: 52-59.

MAXIMUM RELATIVE HUMIDITY: 60-70%.

20 FOOT WINDS: SW winds 4-8 mph with gusts to 15 becoming down-drainage 3-6 mph after 2100 hrs.

STABILITY: Becoming stable after 2100.

CWR: 0%

TUESDAY: Warmer and drier with seasonal afternoon temperatures and lower humidity. High temperatures in the 80s with minimum relative humidity around 25-30%. Winds out of the SW in exposed locations and ridgetops 5-10 mph with a few afternoon gusts to 14-18 mph with terrain driven winds on slopes and in drainages.

OUTLOOK FOR WEDNESDAY THROUGH FRIDAY: Warming and drying continues with somewhat breezy southwest winds on Wednesday but otherwise typical southwest winds with afternoon gusts to 15 mph and slope-driven winds in steeper terrain. Friday through the upcoming weekend, upper level high pressure strengthens and expands north from the Great Basin, pushing temperatures above seasonal averages with afternoon humidity falling to near or below 20% and decreasing overnight humidity recovery.

Send weather observations to:
(406) 899-4112 or robert.hoenisch@noaa.gov

Scan QR code for nearby obs:



FIRE BEHAVIOR FORECAST

FORECAST NUMBER: 1

TYPE OF FIRE: Wildland Fire

FIRE NAME: Sunset

OPERATIONAL PERIOD: 08/18

DATE ISSUED: August 17, 2025

TIME ISSUED: 1800

UNIT: ID-POS

SIGNED: Mike Pagoaga - FBAN

WEATHER

*** SEE IMET FORECAST ***

*Local Weather Thresholds that shout **WATCH OUT***

Temperature > 80 F

Relative Humidity < 20%

1000-Hour Fuel Moisture < 15%

Eye level winds over 10 mph, 20 ft Winds over 15 mph

FUELS

The area comprises a mix of fuel models: TU5 (very high load, dry climate timber-shrub), TU2 (moderate load, humid climate timber-shrub), and SH2 (moderate load, dry climate shrub). Fuels are mid-way through their curing phase of growth and will provide little resistance to fire spread. Areas that are barren can still support fire spread due to the sparse dry fuels.

FIRE DANGER CONDITIONS = Moderate

100 Hr Fuel Moisture = 7%

1000 Hr Fuel Moisture = 7%

Energy Release = 89%

Burning Index = 72%



North Zone NFDRS

FIRE BEHAVIOR

General Fire Behavior:

Moderate fire behavior can be expected today. It won't take much for conifers to become active and produce spots. Clearing skies and steep slopes increase fire behavior potential and the likeness of spotting. Lake Pend Oreille will play a role in fire spread throughout the day.

Fine Dead Fuel Moisture: 6% unshaded, 9% shaded

Probability of Ignition 50%, spotting up to .25 mile with wind gusts and full exposure

Specific Fire Behavior:

DIV A: Smoldering and creeping will continue, and fire behavior will be limited due to suppression activities, and the last received precipitation. Today will be another good day for operational assignments.

DIV F/M: The main concern for this division is the slope along Maiden Rock and Maiden Creek. Rollout, torching will be the primary concern to throw more spots ahead of the fire.

DIV Z: This fire has continued to spread south under similar conditions. This morning's cloud cover will delay fire activity longer than.

DIV T: Lake effect influences will cause variable fire activity throughout this division. Pockets of unburned or patchy burns can become active, torch, and throw spots into other divisions. Expect this to happen with clearing skies in the late afternoon.

DIV R: This area of the fire has the most opportunity to see increased fire behavior as the fire continues to spread north into Pearl and Talache Creek. Expect surface fire runs with spotting to the west and north due to terrain influences.

Safety

Slowly increasing activity as the shift goes on. Pay attention to subtle changes.

Don't be surprised by torching and spotting near the end of the work shift.

Division/Group Assignment List (ICS 204 WF)

Controlled Unclassified Information//Basic

1. Incident Name:				3.			
SUNSET				Branch:		Division/Group: A	
2. Operational Period:							
Date/Time From: 08/18/2025 0600 MON		Date/Time To: 08/18/2025 2200 MON					
4. Operations Personnel							
PLANNING OPS		GREG SCHENK		LINE OPS		KEVIN SMITH	
DIVISION/GROUP SUPERVISOR		MACKER BABB JARID CLARK (T)		SAFETY		ADAM CARR JONATHAN WHITE	
5. Resources Assigned this Period							
Strike Team / Task Force / Resource Designator		LWD	Leader	Number Persons	Drop Off PT./Time	Pick Up PT./Time	
O-5 TFLD AARON BABIN		08/27		1			
O-75 TFLD JOSH BRANDT		08/27		1			
O-14.1 TFLD (T) CONNOR SHOEBOOKS				1			
C-4 CR2I GRAYBACK A		08/27	BRYAN LEWMAN	20			
C-6 CR2I MILLER ALPHA		08/28	GARCIA LUIS	22			
E-11 ENG5 E3252		08/26	KEVEN PALASDOS	3			
E-14 ENG6 E-611-2 NANTAHALA		08/26	BRANDON PHILLIPS	4			
E-20 ENG6 NORTHWEST ENGINE 37		08/31	GARY MOBBS	3			
E-22 ENG6 NORTHWEST ENGINE 27		08/31	SCOTT SHERLOCK	3			
E-3 WTS2 FOX CREEK		08/27	MOUREEN WEST	1			
E-26 WTS3 NORTHSIDE FIRE DISTRICT		08/28	ALEXIS VANDECOEVERING	1			
O-11 FMOD CAMPBELL TRUCKING		08/28	TRAVIS PULLER	2			
E-16 AMB4 HAUSER LAKE BLS		08/28	DAVE STROHTE	2			
6. Control Operations/Work Assignments:							
Continue installing water handling equipment. Continue mop up operations. 100' form the fire perimeter.							
7. Special Instructions:							
8. Division/Group Communication Summary							
Function	Channel	RX Frequency N/W	RX Tone/NAC	TX Frequency N/W	TX Tone/NAC	Mode	
TACTICAL	1	168.0500	110.9	168.0500	110.9	A	
COMMAND	7	168.5000	110.9	164.8750	110.9	A	
COMMAND	8	170.9750	110.9	168.7000	110.9	A	
TACTICAL	12	159.2850	77.0	159.2850	77.0	A	
TACTICAL	13	155.3400		155.3400		A	
AIR TO GROUND	14	171.4250		171.4250		A	
AIR TO GROUND	15	171.7750		171.7750		A	
9. Prepared By (Resource Unit Leader)			Approved By (Planning Section Chief)			Date	
M.J. CRANDALL			JOHN GUBEL			08/17/2025	
						Time	
						2030	

Division/Group Assignment List (ICS 204 WF)

Controlled Unclassified Information//Basic

1. Incident Name:				3.			
SUNSET				Branch:		Division/Group:	
2. Operational Period:							
Date/Time From: 08/18/2025 0600 MON		Date/Time To: 08/18/2025 2200 MON				F/M	
4. Operations Personnel							
PLANNING OPS		GREG SHENK		LINE OPS		KEVIN SMITH	
DIVISION/GROUP SUPERVISOR		DAVE MACLAY-SCHULTE MITCH ROBBINS (T)		SAFETY		ADAM CARR JONATHAN WHITE	
5. Resources Assigned this Period							
Strike Team / Task Force / Resource Designator		LWD	Leader	Number Persons	Drop Off PT./Time	Pick Up PT./Time	
O-35 TFLD NICHOLAS CLARK (T)				1			
O-7.7 TFLD RYAN JACKSON		08/27		1			
O-26 HEQB JARED HAMMATT		08/31		1			
O-37 HEQB DENNIS GILLMER			DENNIS GILLMER	1			
C-3 CR2I PATRICK CHARLIE		08/27	JOE FOWARD	20			
C-14 CR2I DIAMOND FIRE 11A		08/29	JONATHAN ALVAREZ	20			
C-15 CR2I UMPQUA SZ		08/21	DANE DEXTER	19			
E-39 ENG5 E1152		08/28	OWEN VANDECOEVERING	3			
E-19 ENG6 SEAN ANDREWS FIRE SERVICE		08/31	NATHANIEL KIELE	3			
E-63 DZR2 NELSON BROS TIMBER				2			
E-47 EXC2 EQUIPMENT TECHNOLOGIES, LLC		08/28	DYLAN YARNELL	2			
E-82 FEL1 AKRE LOGGING		08/29		2			
E-43 WTS2 PRIMMER		08/29	JAMES PRIMMER	1			
E-44 WTT2 OXFORD INC		08/28	HANS WARBOYS	1			
E-33 WTS2 FOX CREEK 2		08/29		1			
E-61 WTS2 FISHER RIVER RFD		08/30	MIKE HARRIS	1			
O-10 FMOD NEWMAN MOD 5		08/28	ETHAN NEWMAN	2			
8. Division/Group Communication Summary							
Function	Channel	RX Frequency N/W	RX Tone/NAC	TX Frequency N/W	TX Tone/NAC	Mode	
TACTICAL	2	168.2000	110.9	168.200	110.9	A	
COMMAND	7	168.5000	110.9	164.8750	110.9	A	
COMMAND	8	170.9750	110.9	168.7000	110.9	A	
TACTICAL	12	159.2850	77.0	159.2850	77.0	A	
TACTICAL	13	155.3400		155.3400		A	
AIR TO GROUND	14	171.4250		171.4250		A	
AIR TO GROUND	15	171.7750		171.7750		A	
AIR GUARD	16	168.6250		168.6250	110.9	A	
9. Prepared By (Resource Unit Leader)		Approved By (Planning Section Chief)			Date		Time
M.J. CRANDALL		JOHN GUBEL			08/17/2025		2030

Division/Group Assignment List (ICS 204 WF)

Controlled Unclassified Information//Basic

1. Incident Name:				3.			
SUNSET				Branch:		Division/Group:	
2. Operational Period:				F/M			
Date/Time From: 08/18/2025 0600 MON		Date/Time To: 08/18/2025 2200 MON					
4. Operations Personnel							
PLANNING OPS		GREG SHENK		LINE OPS		KEVIN SMITH	
DIVISION/GROUP SUPERVISOR		DAVE MACLAY-SCHULTE MITCH ROBBINS (T)		SAFETY		ADAM CARR JONATHAN WHITE	
5. Resources Assigned this Period							
Strike Team / Task Force / Resource Designator		LWD	Leader		Number Persons	Drop Off PT./Time	Pick Up PT./Time
O-12 FMOD SWEDBERG		08/28			2		
6. Control Operations/Work Assignments:							
Map/GPS drop points, helispots, safety zones, escape routes and pump locations.							
7. Special Instructions:							
Construct direct dozer and hand lines. Work with Structure Divs to help develop a structure protection plan and a plan to protect vital naval structures. Continue to scout both direct and contingency lines. Begin installing water handling equipment. Start mop up of operations.							
8. Division/Group Communication Summary							
Function	Channel	RX Frequency N/W	RX Tone/NAC	TX Frequency N/W	TX Tone/NAC	Mode	
TACTICAL	2	168.2000	110.9	168.200	110.9	A	
COMMAND	7	168.5000	110.9	164.8750	110.9	A	
COMMAND	8	170.9750	110.9	168.7000	110.9	A	
TACTICAL	12	159.2850	77.0	159.2850	77.0	A	
TACTICAL	13	155.3400		155.3400		A	
AIR TO GROUND	14	171.4250		171.4250		A	
AIR TO GROUND	15	171.7750		171.7750		A	
AIR GUARD	16	168.6250		168.6250	110.9	A	
9. Prepared By (Resource Unit Leader)		Approved By (Planning Section Chief)			Date	Time	
M.J. CRANDALL		JOHN GUBEL			08/17/2025	2030	

Division/Group Assignment List (ICS 204 WF)
Controlled Unclassified Information//Basic

1. Incident Name:				3.			
SUNSET				Branch:		Division/Group: R	
2. Operational Period:							
Date/Time From: 08/18/2025 0600 MON		Date/Time To: 08/18/2025 2200 MON					
4. Operations Personnel							
PLANNING OPS		GREG SCHENK		LINE OPS		KEVIN SMITH	
DIVISION/GROUP SUPERVISOR		AARON JONES STEVE AGUIRRE (T)		SAFETY		ADAM CARR JONATHAN WHITE	
5. Resources Assigned this Period							
Strike Team / Task Force / Resource Designator		LWD	Leader	Number Persons	Drop Off PT./Time	Pick Up PT./Time	
O-28 HEQB WES MORGAN		08/26		1			
O-62 HEQB ERIC KLEIN		08/27		1			
O-29 HEQB BOB ECK		08/26		1			
C-7 CRW1 ELDORADO IHC		08/25	BENJAMIN J STRAHAN	24			
C-8 CRW1 TAHOE IHC		08/28	DANIEL GERMAN GUERRERO	20			
C-9 CR2I LOLO REGULARS #1		08/28	MARGARET M FISK	22			
E-65 ENG6 CATALDO F11		08/28	MASON EDWIN WYMAN	3			
E-45 SKG1 EQUIPMENT TECHNOLOGIES, LLC		08/28	KADEN PRATHER	2			
E-2 DZR2 FOUSTS INC		08/26	DARRL UNRUH	2			
E-34 DZR3 EQUIPMENT TECHNOLOGIES		08/28	GREG JONES	1			
E-24 DZR2 AKRE LOGGING LLC		08/28	BRYAN KIRSCHMAN	2			
E-81 MBM1 ALTERED ASPECTS		08/29					
E-105 MBM2 HESTER FOREST MGMT				1			
E-59 WTS2 CAMPBELL TRUCKING		08/31	EVERETT HAMMOND	1			
E-60 WTS2 CAMPBELL TRUCKING		08/31	SHANE CAMPBELL	1			
E-42 AMB1 FREMONT CO ALS/BLS		08/29	TRACY GARCIA	2			
6. Control Operations/Work Assignments:							
8. Division/Group Communication Summary							
Function	Channel	RX Frequency N/W	RX Tone/NAC	TX Frequency N/W	TX Tone/NAC	Mode	
TACTICAL	3	168.6000	110.9	168.6000	110.9	A	
COMMAND	7	168.5000	110.9	164.8750	110.9	A	
COMMAND	8	170.9750	110.9	168.7000	110.9	A	
TACTICAL	12	159.2850	77.0	159.2850	77.0	A	
TACTICAL	13	155.3400		155.3400		A	
AIR TO GROUND	14	171.4250		171.4250		A	
AIR TO GROUND	15	171.7750		171.7750		A	
9. Prepared By (Resource Unit Leader)			Approved By (Planning Section Chief)		Date		Time
M.J. CRANDALL			JOHN GUBEL		08/17/2025		2030

Division/Group Assignment List (ICS 204 WF)

Controlled Unclassified Information//Basic

1. Incident Name:				3.			
SUNSET				Branch:		Division/Group:	
2. Operational Period:				R			
Date/Time From: 08/18/2025 0600 MON		Date/Time To: 08/18/2025 2200 MON					
4. Operations Personnel							
PLANNING OPS		GREG SCHENK		LINE OPS		KEVIN SMITH	
DIVISION/GROUP SUPERVISOR		AARON JONES STEVE AGUIRRE (T)		SAFETY		ADAM CARR JONATHAN WHITE	
6. Control Operations/Work Assignments: Continue to construct direct and indirect line. Protect infrastructure at Pearl Creek.							
7. Special Instructions: Map/GPS drop points, helispots, safety zones, escape routes and pump locations.							
8. Division/Group Communication Summary							
Function	Channel	RX Frequency N/W	RX Tone/NAC	TX Frequency N/W	TX Tone/NAC	Mode	
TACTICAL	3	168.6000	110.9	168.6000	110.9	A	
COMMAND	7	168.5000	110.9	164.8750	110.9	A	
COMMAND	8	170.9750	110.9	168.7000	110.9	A	
TACTICAL	12	159.2850	77.0	159.2850	77.0	A	
TACTICAL	13	155.3400		155.3400		A	
AIR TO GROUND	14	171.4250		171.4250		A	
AIR TO GROUND	15	171.7750		171.7750		A	
9. Prepared By (Resource Unit Leader)		Approved By (Planning Section Chief)			Date	Time	
M.J. CRANDALL		JOHN GUBEL			08/17/2025	2030	

Division/Group Assignment List (ICS 204 WF)

Controlled Unclassified Information//Basic

1. Incident Name:				3.				
SUNSET				Branch:		Division/Group:		
2. Operational Period:				T				
Date/Time From: 08/18/2025 0600 MON		Date/Time To: 08/18/2025 2200 MON						
4. Operations Personnel								
PLANNING OPS		GREG SCHENK			LINE OPS		KEVIN SMITH	
DIVISION/GROUP SUPERVISOR		SCOTT DRAKE			SAFETY		ADAM CARR JONATHAN WHITE	
AIR OPS								
5. Resources Assigned this Period								
Strike Team / Task Force / Resource Designator		LWD	Leader		Number Persons	Drop Off PT./Time	Pick Up PT./Time	
O-73 SQUAD IA MODULE IPF 71			JEDEDIAH ADAMS		4			
CITY OF SANDPOINT BT 1191								
SAM OWEN BT 1391								
6. Control Operations/Work Assignments:								
Develop protection plan an triage critical infrastructure along the shoreline. Determine how many points, their location, and what is needed to protect them.								
Support Zulu and Romeo as lookout.								
7. Special Instructions:								
Monitor the fire activity along the shoreline. Continue to communicate with boats as needed.								
8. Division/Group Communication Summary								
Function	Channel	RX Frequency N/W	RX Tone/NAC	TX Frequency N/W	TX Tone/NAC	Mode		
TACTICAL	4	166.7250	110.9	168.7250	110.9	A		
COMMAND	7	168.5000	110.9	164.8750	110.9	A		
COMMAND	8	170.9750	110.9	168.7000	110.9	A		
TACTICAL	12	159.2850	77.0	159.2850	77.0	A		
TACTICAL	13	155.3400		155.3400		A		
AIR TO GROUND	14	171.4250		171.4250		A		
AIR TO GROUND	15	171.7750		171.7750		A		
AIR GUARD	16	168.6250		168.6250	110.9	A		
9. Prepared By (Resource Unit Leader)			Approved By (Planning Section Chief)			Date		Time
M.J. CRANDALL			JOHN GUBEL			08/17/2025		2030

Division/Group Assignment List (ICS 204 WF)

Controlled Unclassified Information//Basic

1. Incident Name:				3.				
SUNSET				Branch:		Division/Group:		
2. Operational Period:				Z				
Date/Time From: 08/18/2025 0600 MON		Date/Time To: 08/18/2025 2200 MON						
4. Operations Personnel								
PLANNING OPS		GREG SCHENK			LINE OPS		KEVIN SMITH	
DIVISION/GROUP SUPERVISOR		CHRIS WHITE			SAFETY		ADAM CARR JONATHAN WHITE	
AIR OPS								
5. Resources Assigned this Period								
Strike Team / Task Force / Resource Designator		LWD	Leader		Number Persons	Drop Off PT./Time	Pick Up PT./Time	
E-7.1 TFLD RYAN KLETTE					1			
O-59 TFLD NICK CAPOBIANCO		08/26			1			
C-5 CR2I MILLER BRAVO		08/28	MAXWELL LABAHN		22			
C-16 CR2I GRAYBACK 158		08/29	JEREME LOVE		22			
E-13 ENG5 INLAND FOREST MGMT 522		08/26	TREVOR TERWILLIGER		3			
E-8 ENG5 ENG 2351		08/26			5			
E-58 ENG6 INLAND FOREST MGMT 621		08/23	DONAVON MAUPIN		2			
E-40 DZR3 NORTHWEST TRUCKING DOZER		08/26	PAUL SOTIN		1			
E-1 DZR4 TAYLOR DOZER					1			
E-4 WTS2 CRAIG MARTIN - 492771		08/28	CRAIG MARTIN		1			
E-48 FEL1 AKRE LOGGING		08/29			2			
E-5 WTS2 RICHARDSON TREE CARE		08/26			2			
E-80 EXC2 ALTERED ASPECTS, LLC - 001924		08/30			2			
6. Control Operations/Work Assignments:								
Continue to install water handling equipment. Continue mop up operations. 100' from the fire perimeter.								
8. Division/Group Communication Summary								
Function	Channel	RX Frequency N/W	RX Tone/NAC	TX Frequency N/W	TX Tone/NAC	Mode		
TACTICAL	5	168.2500	110.9	168.2500	110.9	A		
COMMAND	7	168.5000	110.9	164.8750	110.9	A		
COMMAND	8	170.9750	110.9	168.7000	110.9	A		
TACTICAL	12	159.2850	77.0	159.2850	77.0	A		
TACTICAL	13	155.3400		155.3400		A		
AIR TO GROUND	14	171.4250		171.4250		A		
AIR TO GROUND	15	171.7750		171.7750		A		
AIR GUARD	16	168.6250		168.6250	110.9	A		
9. Prepared By (Resource Unit Leader)		Approved By (Planning Section Chief)			Date	Time		
M.J. CRANDALL		JOHN GUBEL			08/17/2025	2030		

Division/Group Assignment List (ICS 204 WF)

Controlled Unclassified Information//Basic

1. Incident Name:				3.				
SUNSET				Branch:		Division/Group:		
2. Operational Period:				STRUCTURE				
Date/Time From: 08/18/2025 0600 MON		Date/Time To: 08/18/2025 2200 MON						
4. Operations Personnel								
PLANNING OPS		GREG SCHENK			LINE OPS		KEVIN SMITH	
DIVISION/GROUP SUPERVISOR		ED WINGERT BRIAN EVANS (T)			SAFETY		ADAM CARR JONATHAN WHITE	
AIR OPS								
5. Resources Assigned this Period								
Strike Team / Task Force / Resource Designator		LWD	Leader		Number Persons	Drop Off PT./Time	Pick Up PT./Time	
O-25 TFLD JEFF ARMSTRONG		08/24			1			
TFLD JOSH DELAMAR					1			
6. Control Operations/Work Assignments:								
Begin installing water handling equipment. Start mop up operations.								
7. Special Instructions:								
Develop protection plan, triage structures. Map/GPS drop points, safety zones, escape routes and pump locations.								
8. Division/Group Communication Summary								
Function	Channel	RX Frequency N/W	RX Tone/NAC	TX Frequency N/W	TX Tone/NAC	Mode		
TACTICAL	6	166.7750	110.9	166.7750	110.9	A		
COMMAND	7	168.5000	110.9	164.8750	110.9	A		
COMMAND	8	170.9750	110.9	168.7000	110.9	A		
TACTICAL	12	159.2850	77.0	159.2850	77.0	A		
TACTICAL	13	155.3400		155.3400		A		
AIR TO GROUND	14	171.4250		171.4250		A		
AIR TO GROUND	15	171.7750		171.7750		A		
AIR GUARD	16	168.6250		168.6250	110.9	A		
9. Prepared By (Resource Unit Leader)			Approved By (Planning Section Chief)			Date	Time	
M.J. CRANDALL			JOHN GUBEL			08/17/2025	2030	

INCIDENT RADIO COMMUNICATIONS PLAN I-205				1. INCIDENT NAME		2. DATE/TIME PREPARED		3. OPERATIONAL PERIOD DATE/TIME			
				SUNSET		8/17/2025		8/18/25 0630 THRU 2200			
4. BASIC RADIO CHANNEL UTILIZATION											
Ch #	Function	Channel Name	Assignment	RX Freq	N/W	RX Tone/NAC	TX Freq	N/W	TX Tone/NAC	Mode Analog (A) Digital (D) Mixed (M)	Remarks
1	TAC	TAC 1	DIV A	168.0500	N	110.9	168.0500	N	110.9	A	DIV A
2	TAC	TAC 2	DIV F/M	168.2000	N	110.9	168.2000	N	110.9	A	DIV F/M
3	TAC	TAC 3	DIV R	168.6000	N	110.9	168.6000	N	110.9	A	DIV R
4	TAC	TAC 4	DIV T	166.7250	N	110.9	166.7250	N	110.9	A	DIV T
5	TAC	TAC 5	DIV Z	168.2500	N	110.9	168.2500	N	110.9	A	DIV Z
6	TAC	TAC 6	STRUCTURE	166.7750	N	110.9	166.7750	N	110.9	A	STRUCTURE GROUP
7	COMMAND	CMD 7	COMMAND	168.5000	N	110.9	164.8750	N	110.9	A	CAPE HORN
8	COMMAND	CMD 8	COMMAND	170.9750	N	110.9	168.7000	N	110.9	A	LITTLE BLACK TAIL
9	COMMAND	RESERVED			N						
10	DISPATCH	SCHWEITZER	LOCAL REPEATER	159.3375	N	100.0	151.4375	N	136.5	A	IDL SCHWEITZER TO COEUR D ALEANE DISPATCH
11	DISPATCH	HOODOO	LOCAL REPEATER	159.4500	N	123.0	151.2200	N	123.0	A	IDL HOODOO TO COEUR D ALEANE DISPATCH
12	TAC	IDL DIR 2	IA TAC	159.2850	N	77.0	159.2850	N	77.0	A	IDL DIR 2 (IA TAC)
13	TAC	VMED 28	MED/VAC	155.3400	N		155.3400	N		A	AIR MED
14	A/G	A/G PRI	AIR TO GROUND	171.4250	N		171.4250	N		A	A/G PRIMARY
15	A/G	A/G SEC	AIR TO GROUND	171.7750	N		171.7750	N		A	A/G SECONDARY
16	AIRGUARD	AIRGUARD	EMERGENCY	168.6250	N		168.6250	N	110.9	A	EMERGENCY
5. Special Instructions:											
6. I-205 Prepared By: Communications Unit Leader				Name: Mike Scherer				Signature: PAUL SCHERER			

Digitally signed by PAUL SCHERER
Date: 2025.08.17 16:42:03 -07'00'

ICS-206 MEDICAL PLAN	1. Incident Name Sunset Fire	2. Date Prepared 08-17-25	3. Time Prepared 0930	4. Operational Period 08-18-25 0600-2200				
5. Incident Medical Aid Station								
Medical Aid Stations	Location			Level of Care				
				ALS	BLS			
Houser Lake Fire Ambulance	Division Alpha – Careywood Fire Station				X			
Fremont Ambulance	Division Romeo – Talache Road			X				
6. Transportation								
A. Ambulance Services								
Name	Address	Phone		Level of Care				
				ALS	BLS			
Kootenai County EMS	Coeur d'Alene, ID	911		X				
Bonner County EMS	Sandpoint, ID	911		X				
B. Air Resources								
Name	Location			Level of Care				
				ALS	BLS			
Life Flight Network	Sandpoint, ID and Coeur d'Alene, ID			X				
Two Bear Air (Hoist)	Kallispell, MT				X			
Spokane County Rescue 3 (Shorthaul)	Spokane Valley, WA			X				
Central Montana Helitack	Libby, MT				X			
7. Hospitals								
Name	Address	Travel Time		Phone	Helipad		Burn Center	
		Air	Grnd		Yes	No	Yes	No
Kootenai Health Level 2 Trauma Center	2003 Kootenai Health Way Coeur d'Alene, ID LAT: 47 41 45.658N LONG: 116 47 41.684W	30m	75m	208-625-4000	x			
Bonner General Level 4 Trauma Center	520 N. Third Ave Sandpoint, ID LAT: 48 16.650N LONG: 116 32.980W	30m	60m	208-263-1441	x			x
8. Medical Emergency Procedures								
9. Prepared by (Medical Unit Leader) Sadie Galloway MEDL(t)					10. Reviewed by (Safety Officer) Robert Spence SOFC(t)			

Upon occurrence of a "Major Medical" or accident involving significant injury on the fire line, the closest DIVS should respond directly to the scene to take control of the situation and direct necessary actions. If the DIVS is unavailable, the nearest fire line supervisor or leader needs to take charge.

1. Clear all radio traffic on the Incident Command Channel. Go direct with Kootenai 911. Notify Coeur d' Alene Dispatch at the appropriate time with the informaion. DO NOT USE NAMES. Identify: a) The on-scene Point Of Contact (i.e. TFLD Smith); b) Describe the nature of the accident.
2. Obtain and facilitate nearest EMT to the scene. Identify to Communications medical personnel on site. Follow the 8 line.
3. Report the situation to Operations and Safety.
4. Determine if the person can be transported by vehicle from their location or if they need to be packaged and carried out. If the patient cannot be moved make contact with 911 for a short haul out with Fire Resources. Notify Operations, Safety if this happens. The patient will be transported to the closest aproprate Medal Center. On scene resources will be in contact with the short haul ship on Air to ground for that Division. Medical transport will be determined by EMS in the field
5. Determin if the patients injuries are in need of air transport or ground transport. Ground will be used for non life threatening injury. If Air transport is needed for a more significant injury it will be to the closest aproprate medical center.

	<p>9. PREPARED BY The Safety Team</p> <p><i>Robert Spence SOFC (+)</i></p>	<p>10. REVIEWED BY</p> <p><i>Robert Spence SOFC (+)</i></p>
--	--	---



Safety Message

Planning for a Medical Emergency

Being Prepared:

- Who are your medical personnel and where are they located?
- Are your medical personnel EMT's or Paramedics?
- How will you contact them? Can you reach them on TAC or must you use Command?
- How long will it take them to get to you?
- How/when will you communicate with DIVS and other adjacent resources?
- When was the last time YOU practiced being the "IC" of an Incident Within an Incident (IWI)?

Ground Based Medical Transport:

- Do you have an ambulance on or near your division that can reach you?
- Who will transport your injured crew member?
- Will you need to carry your injured crew member to an area that is vehicle accessible? How long will that take? Will you need help? Will you need special equipment?
- Are other crews close by to help you?

Aviation Based Medical Transport:

- Where are the closest helispots to the injury location?
- How long will it take to get your injured crew member to a helispot?
- How long will it take to get a medivac ship from helibase to your closest helispot?
- Is the injury site in an area that will necessitate a hoist/shorthaul extraction operation?
- How long will it take to get a hoist/shorthaul ship to the injury site?
- Do you understand the difference between Hoist operations and Short Haul?
- Is the Army National Guard providing medical aircraft? Will you be able to communicate with the National Guard Aircraft?

Team Safety Officers: John White and Robert Spence (t)

Safety is your Responsibility!

Northern Rockies Complex Incident Management Team 5

Finance Message

8/18/25



Send Us Your Treasure!

Phone: 208.867.9570

Finance Email: 2025.sunset.finance@firenet.gov

REMINDERS

- ★ Please show your lunch break – If no break shown, it must be justified in the comments.
- ★ Please use military time (0000 – 2400).
- ★ If you are a vendor on an IDL contract, please put that number on your shift ticket NOT the VIPR number.
- ★ When claiming hazard pay, you must describe the hazardous action being performed, per Ch. 10 of the Yellow Book.

- ★ **Steps to turn a picture into a PDF on Android**
 - Open your web browser and navigate to the convert JPG to PDF tool.
 - Tab the button labeled “select a file” and choose your picture.
 - The tool automatically converts your picture to a PDF.
 - Download your freshly converted PDF.

- ★ **Steps to turn a picture into a PDF on iPhone**
 - Open Notes and select a note or create a new one.
 - Tap the Camera button, then tap Scan Documents
 - Place your document in view of the camera.
 - If your device is in Auto mode, your document will automatically scan. If you need to manually capture a scan, tap the Shutter button or press one of the Volume buttons. Then drag the corners to adjust the scan to fit the page, then tap Keep Scan.
 - Tap Save or add additional scans to the document.

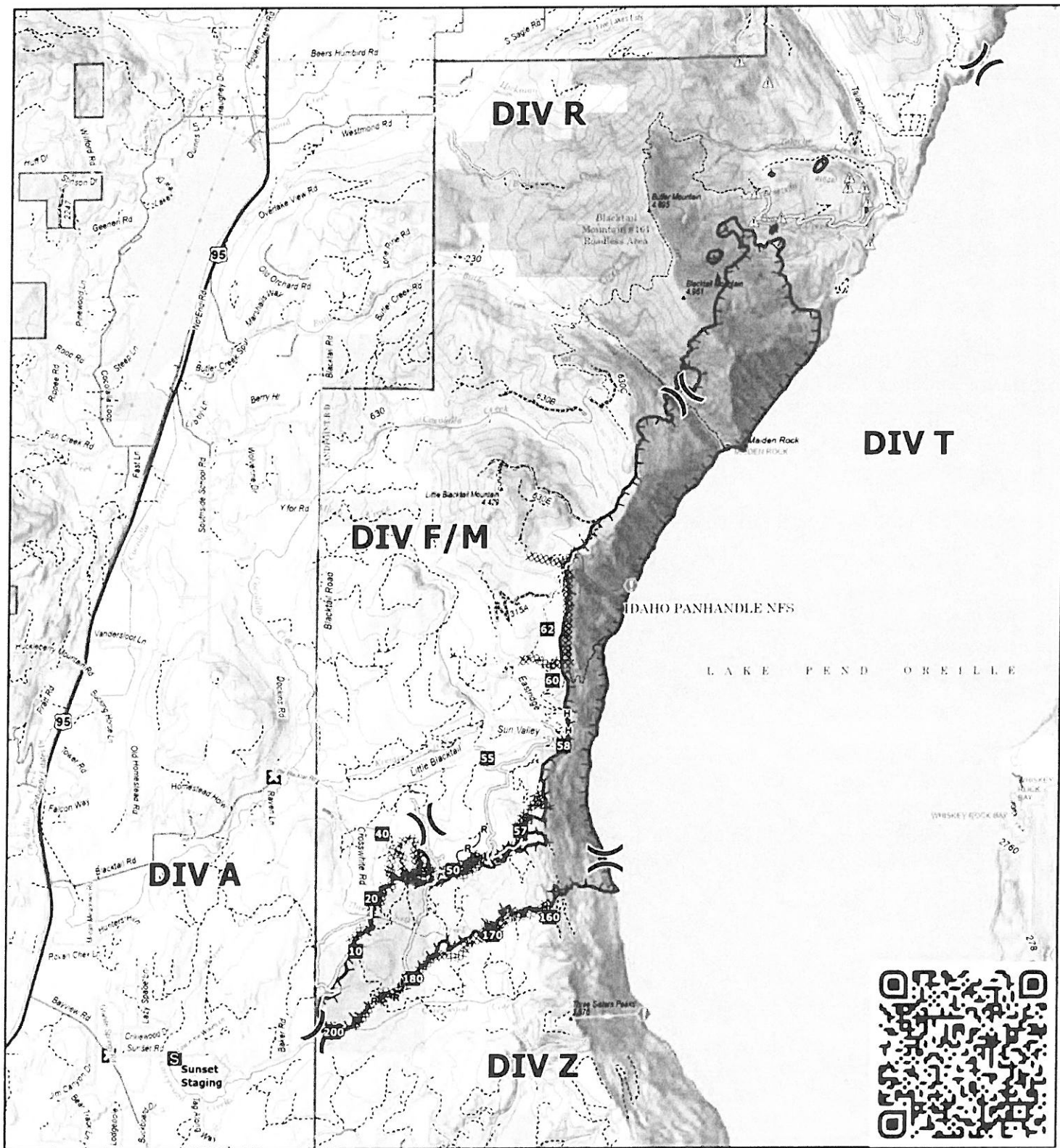
Division Supply Order

Order Number:		Date -		Division -	
Order taken in Communications by:				RADO or COML confirmation:	
DIVS Supervisor:				Date & Time Needed:	
Delivery Contact:				Delivery Location:	
Cell Phone #:				UTM	
Radio Channel Number:				Lat: Long:	
Mode of Delivery (Circle Means):		Ground Support		DP/LZ:	
Division will pick up		Deliver to Helibase		Other:	
SPUL Confirmation can be filled as needed (Circle): Yes or No - Requiring at least 24 hours to fill.					
Item	Description:	Quantity	Comments		
	Hose Lay Kit , 1000 Feet = (10) 1 1/2" Hose; and 5 Each of: 1" Hose, 1 1/2" Wyes, 1 1/2" to 1" Reducers, and 1" Forester Nozzles				
1		1000 Feet	4	4000 Feet	
2		2000 Feet	5	5000 Feet	
3		3000 Feet	6	6000 Feet	
	Garden Hose Kit , 500 Feet = (10) 3/4" Hose, and (5 Each): 3/4" Wye, 3/4" Shutoff, 3/4" Nozzle, 1" Wye, and 1" to 3/4" Reducers)				
7		500 Feet	10	3000 Feet	
8		1000 Feet	11	4000 Feet	
9		2000 Feet	12	5000 Feet	
Water Handling Equipment:			Item #	Description	Quantity
13	Hose: 1 1/2" (100')	LG		Line Tools:	
14	1" (100')	LG	40	Pulaski	EA
15	3/4" (50' Toy/Garden)	LG	41	Combi	EA
16	Gated Wye: 1 1/2"	EA	42	McCloud	EA
17	1"	EA	43	Shovel	EA
18	3/4"	EA	44	Water: Cubies	EA
19	Reducer: 1 1/2" X 1"	EA	45	Bottled	CS
20	1" X 3/4"	EA	46	Gatorade	CS
21	Nozzle: 1" Forester	EA	47	MRE's	BX
22	1" Mystery (KK)	EA	48	Flagging: Lime Green	RO
23	1 1/2" Red Barrel	EA	49	Pink	RO
24	3/4" Brass		50	Orange	RO
25	Shutoff Values: 3/4"	EA	51	Killer Tree	RO
26	Pumpkin or Porta-Tank, 1800 gal.	EA	52	Wrap, Structural	RO
27	Blivets, Slingable 55 Gal	EA	53	Other:	
28	Mopup Kits 3 Person	EA	54		
29	Backpack Pumps	EA	55		
30	Sprinkler Kits	EA	56		
31	Foam (5 GALS)	PL	57		
32	Mark III Kits	KT	58		
33	Drip Torch	EA	59		
34	Fusees (72/Case)	CS	60		
35	Chainsaw Kit	KT	61	Bar Oil	Gal
36	Fuel, 5 gallons:	Gas	Can	Diesel, 5 gallon	Can
37	Mark III (20:1)		Can	63	QT
38	Chainsaw (50:1)	Mixed	Can	64	BT
				65	BT
39	Drip Torch (3:2)		Can		

First source of supply is Cache, shaded blocks indicate items available thru Northern Rockies Cache. Items requiring an approved Property Loss and Damage form are in a separate list at the bottom.											
PART	034/341	360/MS360	MS361	MS362	038/381	044/MS440	MS441	460/MS461	MS462	0640/650	MS880
Spark Plug (NFESH 000344)	Bosch WSR6F NGK BPMR7A Champion RC16Y	Bosch WSR6F NGK BPMR7A Champion RC16Y	Bosch WSR6F NGK BPMR7A Champion RC16Y	Bosch WSR6F NGK BPMR7A Champion RC16Y	Bosch WSR6F NGK BPMR7A Champion RC16Y	Bosch WSR6F NGK BPMR7A Champion RC16Y	Bosch WSR6F NGK BPMR7A Champion RC16Y	Bosch WSR6F NGK BPMR7A Champion RC16Y	Bosch WSR6F NGK BPMR7A Champion RC16Y	Bosch WSR6F NGK BPMR7A Champion RC16Y	Bosch WSR6F NGK BPMR7A Champion RC16Y
	9512-933-2380 0000-958-1022 9460-624-0801	9512-933-2380 0000-958-1022 9460-624-0801	9512-933-2380 0000-958-1032 9460-624-0801	9512-933-2380 0000-958-1032 9460-624-0801	9512-933-3150 0000-958-1231 9460-624-1001	9512-933-2380 0000-958-1032 9460-624-0801	9512-933-2380 0000-958-1032 9460-624-0801	9512-933-2380 0000-958-1032 9460-624-0801	9512-933-2380 0000-958-1032 9460-624-0801	9512-933-2382 0000-958-1032 9460-624-0801	9512-933-3170 0000-958-1236 9460-624-1001
	0000-350-3504	0000-350-3504	0000-350-3504	0000-350-3504	0000-350-3504	0000-350-3504	0000-350-3504	0000-350-3504	0000-350-3504	0000-350-3500	0000-350-3504
	1125-120-1626	1125-120-1612	1135-120-1600	1140-140-4401	1119-120-1611	0000-140-4402	0000-140-4402	0000-140-4402	0000-140-4402	0000-140-4402	0000-140-4402
Pre Filter - OEM	N/A	N/A	N/A	N/A	1119-120-1500	0000-141-0300	0000-141-0300	0000-141-0300	N/A	0000-141-0300	0000-141-0300
Bar Nut (NFESH# 06661)	0000-955-0801	0000-955-0801	0000-955-0801	0000-955-0801	0000-955-0801	0000-955-0801	0000-955-0801	0000-955-0801	0000-995-0803	0000-955-0801	0000-955-0903
Inner Slide Plate	1122-664-1000	1122-664-1000	1122-664-1000	1122-664-1000	1119-664-1000	1128-664-1001	1138-664-1000	1128-664-1001	1128-664-1001	1128-664-1001	1124-664-1001
STIHL RAPID - Super (RS)											
Chain 3/8"PIITCH - .050" GA - DR											
20" - 72 DR	3623-005-0072	3623-005-0072	3623-005-0072	3623-005-0072	3623-005-0072	3623-005-0072	3623-005-0072	3623-005-0072	3623-005-0072	3623-005-0072	3623-005-0072
25" - 84 DR (NFESH# 006500)	3623-005-0084	3623-005-0084	3623-005-0084	3623-005-0084	3623-005-0084	3623-005-0084	3623-005-0084	3623-005-0084	3623-005-0084	3623-005-0084	3623-005-0084
28" - 91 DR	3623-005-0091	3623-005-0091	3623-005-0091	3623-005-0091	3623-005-0091	3623-005-0091	3623-005-0091	3623-005-0091	3623-005-0091	3623-005-0091	3623-005-0091
32" -105 DR	N/A	N/A	N/A	N/A	N/A	3623-005-0105	3623-005-0105	3623-005-0105	3623-005-0105	3623-005-0105	3623-005-0105
STIHL RAPID - Super - Full Skip (RSF)											
Chain 3/8"PIITCH - .050" GA - DR											
20" - 72 DR	N/A	3676-005-0072	3676-005-0072	3676-005-0072	3676-005-0072	3676-005-0072	3676-005-0072	3676-005-0072	3676-005-0072	3676-005-0072	3676-005-0072
25" - 84 DR	3676-005-0084	3676-005-0084	3676-005-0084	3676-005-0084	3676-005-0084	3676-005-0084	3676-005-0084	3676-005-0084	3676-005-0084	3676-005-0084	3676-005-0084
28" - 91 DR	3676-005-0091	3676-005-0091	3676-005-0091	3676-005-0091	3676-005-0091	3676-005-0091	3676-005-0091	3676-005-0091	3676-005-0091	3676-005-0091	3676-005-0091
32" -105 DR	N/A	N/A	N/A	N/A	N/A	3676-005-0105	3676-005-0105	3676-005-0105	3676-005-0105	3676-005-0105	3676-005-0105
Bar oil: Quantity - Gallon	NFES # 1880										
Bar oil: Quantity - Quart	NFES # 1869										
2 Cycle Oil: Quantity - Quart	NFES # 0341										

The following parts require an approved Property Loss & Damage form prior to ordering:

Guide Bars - 3/8" - .050" GA (STIHL ROLLOMATIC - ES)											
20"	3003-000-8822	3003-000-8822	3003-000-8822	3003-000-8822	3003-000-8822	3003-000-8822	3003-000-8822	3003-000-8822	3003-000-8822	3003-000-8822	3003-000-8822
25" (NFESH 066584)	N/A	3003-000-8830	3003-000-8830	3003-000-8830	3003-000-8830	3003-000-8830	3003-000-8830	3003-000-8830	3003-000-8830	3003-000-8830	3003-000-8830
28"	N/A	N/A	N/A	N/A	N/A	3003-000-8838	3003-000-8838	3003-000-8838	3003-000-8838	3003-000-8838	3003-000-8838
32"	N/A	N/A	N/A	N/A	N/A	3003-000-8846	3003-000-8846	3003-000-8846	3003-000-8846	3003-000-8846	3003-000-8846
Rim Sprocket Kit 3/8 - 7T	1125-007-1040	1125-007-1223	1128-007-1000	1135-007-1002	1119-007-1003	1128-007-1000	1128-007-1000	1128-007-1017	1128-007-1000	1122-007-1000	N/A
Clutch Drum	Order Sprocket Kit	Order Sprocket Kit	Order Sprocket Kit	Order Sprocket Kit	Order Sprocket Kit	Order Sprocket Kit	Order Sprocket Kit	Order Sprocket Kit	Order Sprocket Kit	Order Sprocket Kit	Order Sprocket Kit
Rim Sprocket 3/8 7T (NFESH 066652)	0000-642-1231	0000-642-1023	0000-642-1223	0000-642-1223	0000-642-1223	0000-642-1223	0000-642-1223	0000-642-1223	0000-642-1223	0000-642-1223	N/A
Rim sprocket kit 3/8 - 8T	N/A	N/A	N/A	1128-007-1001	N/A	1128-007-1001	1128-007-1001	1128-007-1001	1128-007-1001	1122-007-1001	1124-007-1025
Clutch Drum	Order Sprocket Kit	Order Sprocket Kit	Order Sprocket Kit	Order Sprocket Kit	Order Sprocket Kit	Order Sprocket Kit	Order Sprocket Kit	Order Sprocket Kit	Order Sprocket Kit	Order Sprocket Kit	Order Sprocket Kit
Rim Sprocket 3/8 - 8T	N/A	0000-642-1216	0000-642-1216	0000-642-1216	0000-642-1216	0000-642-1216	0000-642-1216	0000-642-1216	0000-642-1216	0000-642-1216	0000-642-1216
Clutch	1127-160-2050	1125-160-2005	1128-160-2004	1138-160-2010	1119-160-2000	1128-160-2001	1138-160-2001	1128-160-2004	1142-160-2000	1122-160-2002	1124-160-2005
Chain Adjuster Kit	1125-007-1036	1125-007-1021	1125-007-1021	1125-007-1021	1118-664-1600	1125-007-1021	1125-007-1021	1125-007-1021	1125-007-1021	1125-007-1021	1124-007-1008
Bump Strip	1121-648-6610	1121-648-6610	1121-648-6610	1121-648-6610	1120-664-1500	1121-648-6610	1121-648-6610	1121-648-6610	1121-648-6610	1121-648-6610	1121-648-6610
Starter Rope W/handle	1128-190-3400	1128-190-3400	1128-190-3400	1128-190-3400	1128-190-3400	1128-190-3400	1128-190-3400	1128-190-3400	1128-190-3400	1128-190-3400	1128-190-3400
Worm Gear (Oiler)	1125-640-7110	1125-640-7110	1128-640-7112	1128-640-7112	1119-642-1501	1128-640-7112	1128-640-7112	1128-640-7112	1128-640-7112	1122-640-7105	1124-640-7512
Manifold Boot	1125-141-2200	1125-141-2200	1135-141-2200	1140-140-2503	1119-140-2500	1128-141-2204	1138-140-2508	1128-141-2204	1142-141-2200	1122-141-2200	1124-141-2202



IAP

Sunset

IDPOS-000630

08/18/2025 Day

3199 acres at 08/17/2025 1536

0 0.75 1.5

Miles



1:80,000 RST 5/17/2025 1915

IR (Image Interpretation)

North American 1983 Datum, Lat/Long Grid

- Hazard
- Division Break
- Drop Point
- Closure
- Staging Area
- Value at Risk

- Completed Dozer Line
- Completed Fuel Break
- Completed Hand Line
- Completed Road as Line
- Access Route
- Uncontained Fire Edge

- Wildfire Perimeter
- Trail
- Primary Highway
- Secondary Paved
- Secondary Dirt
- Dirt (Not Paved)

- Road, Not Maintained for Passenger Car
- Spur
- Primitive FS Closed Road
- Ground Line
- Natural Gas Pipelines

- USFS Roadless Areas
- Forest Service Lands
- Bureau of Land Management State
- Administrative FS Boundary

MEDICAL PLAN (ICS 206 WF)

Controlled Unclassified Information//Basic

Medical Incident Report

FOR A NON-EMERGENCY INCIDENT, WORK THROUGH CHAIN OF COMMAND TO REPORT AND TRANSPORT INJURED PERSONNEL AS NECESSARY.

FOR A MEDICAL EMERGENCY: IDENTIFY ON SCENE INCIDENT COMMANDER BY NAME AND POSITION AND ANNOUNCE "MEDICAL EMERGENCY" TO INITIATE RESPONSE FROM IMT COMMUNICATIONS/DISPATCH.

Use the following items to communicate situation to communications/dispatch.

1. CONTACT COMMUNICATIONS / DISPATCH (Verify correct frequency prior to starting report)

Ex: "Communications, Div. Alpha. Stand-by for Emergency Traffic."

2. INCIDENT STATUS: Provide incident summary (including number of patients) and command structure.

Ex: "Communications, I have a Red priority patient, unconscious, struck by a falling tree. Requesting air ambulance to Forest Road 1 at (Lat./Long.) This will be the Trout Meadow Medical, IC is TFLD Jones. EMT Smith is providing medical care."

Severity of Emergency / Transport Priority	<input type="checkbox"/> RED / PRIORITY 1 Life or limb threatening injury or illness. Evacuation need is IMMEDIATE Ex: Unconscious, difficulty breathing, bleeding severely, 2° – 3° burns more than 4 palm sizes, heat stroke, disoriented. <input type="checkbox"/> YELLOW / PRIORITY 2 Serious Injury or illness. Evacuation may be DELAYED if necessary. Ex: Significant trauma, unable to walk, 2° – 3° burns not more than 1-3 palm sizes. <input type="checkbox"/> GREEN / PRIORITY 3 Minor Injury or illness. Non-Emergency transport Ex: Sprains, strains, minor heat-related illness.
Nature of Injury or Illness & Mechanism of Injury	Brief Summary of Injury or Illness (Ex: Unconscious, Struck by Falling Tree)
Transport Request	Air Ambulance / Short Haul/Hoist Ground Ambulance / Other
Patient Location	Descriptive Location & Lat. / Long. (WGS84)
Incident Name	Geographic Name + "Medical" (Ex: Trout Meadow Medical)
On-Scene Incident Commander	Name of on-scene IC of Incident within an Incident (Ex: TFLD Jones)
Patient Care	Name of Care Provider (Ex: EMT Smith)

3. INITIAL PATIENT ASSESSMENT: Complete this section for each patient as applicable (start with the most severe patient)

Patient Assessment: See IRPG page 106

Treatment:

4. TRANSPORT PLAN:

Evacuation Location (if different): (Descriptive Location (drop point, intersection, etc.) or Lat. / Long.) Patient's ETA to Evacuation Location:

Helispot / Extraction Site Size and Hazards:

5. ADDITIONAL RESOURCES / EQUIPMENT NEEDS:

Example: Paramedic/EMT, Crews, Immobilization Devices, AED, Oxygen, Trauma Bag, IV/Fluid(s), Splints, Rope rescue, Wheeled litter, HAZMAT, Extrication

6. COMMUNICATIONS: Identify State Air/Ground EMS Frequencies and Hospital Contacts as applicable

Function	Channel Name/Number	Receive (RX)	Tone/NAC *	Transmit (TX)	Tone/NAC *
COMMAND					
AIR-TO-GRND					
TACTICAL					

7. CONTINGENCY: Considerations: If primary options fail, what actions can be implemented in conjunction with primary evacuation method? Be thinking ahead.

8. ADDITIONAL INFORMATION: Updates/Changes, etc.

REMEMBER: Confirm ETA's of resources ordered. Act according to your level of training. Be Alert. Keep Calm. Think Clearly. Act Decisively.