



Sunset

Incident Action Plan



Wednesday August 20, 2025

0600-2200



For Check-in, Maps & IAP

ID-POS-000630

PNS7RR (1532)

320POS03525

INCIDENT OBJECTIVES

ICS-202

INCIDENT NAME

SUNSET

DATE PREPARED

8/19/2025

TIME PREPARED

2000

OPERATIONAL PERIOD (DATE/TIME)

August 20, 2025, 0600 – 2200**INCIDENT OBJECTIVES:**

Implement risk management practices to provide for firefighter and public safety.

Implement the full suppression strategy to keep the fire North of Sunset Road, East of Cross White Road, South of Talache Road, West of Lake Pend Oreille.

Utilize tactics to protect prioritized values, commensurate with responder risk:

- 1) Private residences and property
- 2) Critical infrastructure and communications sites
- 3) US Navy Infrastructure
- 4) Private, State and Federal timber lands
- 5) Developed recreation infrastructure on Forest Service and BLM land
- 6) Heritage sites on Forest Service and BLM land

Manage incident costs commensurate with the values at risk.

INCIDENT REQUIREMENTS:

Preserve, maintain and foster interagency relationships.

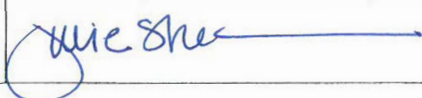
Coordinate routine messaging to the public and identified incident cooperators.

Minimize suppression impacts to heritage resources through coordination with assigned Resource Advisors.

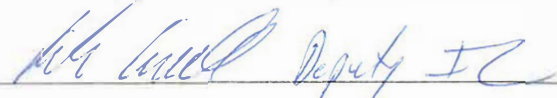
☒ ORGANIZATION LIST (ICS 203)☒ AIR OPS SUMMARY (ICS 220)☒ FINANCE MESSAGE☒ FIRE WEATHER FORECAST☒ COMMUNICATION PLAN (ICS 205)☒ DIVISION SUPPLY ORDER☒ FIRE BEHAVIOR FORECAST☒ SAFETY MESSAGE☒ UNIT LOG☒ ASSIGNMENT LISTS (ICS 204)☒ MEDICAL PLAN (ICS 206)☒ INCIDENT MAP

ICS 202

PREPARED BY (PLANNING SECTION CHIEF)



APPROVED BY (INCIDENT COMMANDER)



ORGANIZATION ASSIGNMENT LIST		9. OPERATIONS		
1. Incident Name SUNSET ID-POS-000630		Planning Ops	Greg Schenk	
		Line Ops	Kevin Smith	
		Strategic Ops	Paul Diaz	
2. Date August 19, 2025	3. Time 2100	a. Branch I - Divisions/Groups		
4. Operational Period August 20, 2025 0600-2200		Division/Group	A	Macker Babb; Jarid Clark (T)
		Division/Group	F/M	Dave Maclay-Schulte; Mitch Robbins (T)
5. Incident Commander and Staff		Division/Group	R	Aaron Jones; Steve Aguirre (T)
		Division/Group	T	Scott Drake
Incident Commander	Joe Sampson	Division/Group	Z	Chris White; Toby Greenberg (T)
Deputy Incident Commander	Rick Connell	Structure Group	Mike King; Charlie McDonald (T)	
Safety Officer	Adam Carr; Jonathan White; Mike Smith (T); Robert Spence (T)	Staging		
Information Officer	Terina Hill; Erik Broeder (T)			
Liaison Officer	Kevin Doherty; Geoffrey Bogie			
6. Agency Representatives				
Agency	Name			
IDL	Erik Sjoquist			
BLM	Ray Pease			
USFS	Kevin Knauth; Chris Noyes (T)			
7. Planning Section				
Chief	Julie Shea; John Gubel; Jim Stiteler			
Resources Unit	Patty Bates; MJ Crandall			
Situation Unit	Brett Gore; Brittney Allestad (T)			
Demobilization Unit	Sue Puddy			
Documentation Unit	Elvira Nieves (T)	c. Air Operations Branch		
GISS	Jeremy Hurst; Matt Heller (T); Jennifer Lacounte (T)	Air Operations	Steve Croy; Jeff Pollack	
IMET	Bob Hoenisch	Air Attack		
FBAN	Mike Pagoaga	Helicopter Coord		
LTAN	Jon Rieck; Todd Erdody	Air Tanker Coord		
ITSS	Michael Harper; Amy Johnson	10. Finance Section		
8. Logistics Section		Chief	Wendy McCartney	
Chief	Bill Lauer; Peter Pappas (V)	Procurement	Tammy Petersen; Stew Williams(T)	
Supply Unit	Meghan Carosella	Time Unit	Haliegh Scott	
Ordering Manager	Lynda Murphy; Darcy Wheeler (V)	Comp/Claims Unit	Quoya Waters	
Ground Support	Jim Lane	Cost Unit	Terry Grosbeck (V)	
Food Unit	Justin Trodick	Prepared by (Resource Unit Leader) Patty Bates		
Medical Unit	Ray Mines; Steve Kendley; Chris Jacks; Sadie Gallaway (T)			
Communication Unit	Mike Scherer			
Security Unit	Richard Paine			
Facilities Unit	Pat Nelson			

FORECAST NO. 03

NAME OF INCIDENT: Sunset

FORECAST FOR: Wednesday Aug 20, 2025

UNIT: IDL-Pend Oreille

TIME AND DATE

FORECAST ISSUED: 1800 Tue Aug 19, 2025

SIGNED: Bob Hoenisch (406) 899-4112

Incident Meteorologist

WEATHER DISCUSSION:

Building upper level high pressure over the western U.S. will maintain an overall drying and warming trend with seasonable warmth through Thursday before much warmer temperatures and dryness develops this weekend. A weather disturbance moving across British Columbia today will enhance the general southwest winds across the region which will be most noticeable on ridgetops and areas with open exposure to the west, where some gusts in excess of 15 mph are possible in the afternoon. A shift to north winds is likely to occur tonight in the wake of the weather disturbance with northerly winds persisting into Thursday morning.

TODAY (WEDNESDAY):

WEATHER: Mostly sunny.

MAX TEMPERATURES:

2000 FT: 82 – 87

4000 FT: 78– 83 (Little change

MINIMUM RELATIVE HUMIDITY:

2000 FT: 24 – 29%

4000 FT: 28 – 33% (Down 3 - 5%)

20 FOOT WINDS:

Slope/Valley: Variable up to 6 mph in the morning, becoming southwest 5-10 mph with gusts to 16 mph in the afternoon.

Ridgetop: Southwest 6-12 mph with afternoon gusts to around 20 mph.

STABILITY: Morning inversion dissipates by 1100 with afternoon mixing to 8500 ft .

CHANCE OF WETTING RAIN: 0% **SMOKE TRANSPORT WIND:** SW 15 mph

WEDNESDAY NIGHT:

WEATHER: Mostly clear.

MINIMUM TEMPERATURE: 52-59.

MAXIMUM RELATIVE HUMIDITY: 55-60%.

20 FOOT WINDS: West winds 5-10 mph with gusts to 15 mph in the evening, becoming North around midnight over ridgetops and along the lake with down-drainage winds 3-5 mph developing in east-west oriented drainages.

STABILITY: Becoming stable after 2100.

CWR: 0%

THURSDAY: Mostly sunny. North winds 5-10 mph in the morning over ridgetops and areas along the lake, becoming upslope/up-drainage 4-8 mph in the afternoon. High temperatures in the mid-upper 80s with minimum relative humidity 20-25%.

OUTLOOK FOR FRIDAY THROUGH SUNDAY: Very warm and dry conditions develop Friday and continue through the weekend. Expect afternoon temperatures in the upper 80s to low 90 with afternoon humidity below 20%. Overnight humidity recovery is likely to degrade at mid-slopes and ridges through the weekend.

Send weather observations to:
(406) 899-4112 or robert.hoenisch@noaa.gov

Scan QR code for nearby obs:



FIRE BEHAVIOR FORECAST

FORECAST NUMBER: 3

TYPE OF FIRE: Wildland Fire

FIRE NAME: Sunset

OPERATIONAL PERIOD: Wednesday, Aug. 20

DATE ISSUED: August 19, 2025

TIME ISSUED: 1800

UNIT: ID-POS

SIGNED: Mike Pagoaga - FBAN

WEATHER

*** SEE IMET FORECAST ***

*Local Weather Thresholds that shout **WATCH OUT***

Temperature > 80 F Relative Humidity < 20%

1000-Hour Fuel Moisture < 15%

Eye level winds over 10 mph, 20ft Winds over 15 mph

FUELS

The area comprises a mix of fuel models: TU5 (very high load, dry climate timber-shrub), TU2 (moderate load, humid climate timber-shrub), and SH2 (moderate load, dry climate shrub). Fuels are mid-way through their curing phase of growth and will provide little resistance to fire spread. Areas that are barren can still support fire spread due to the sparse dry fuels.

FIRE DANGER CONDITIONS = High

100 Hr Fuel Moisture = 12 %

1000 Hr Fuel Moisture = 14 %

Energy Release = 89%

Burning Index = 87%



FIRE BEHAVIOR

General Fire Behavior:

A gradual warming and drying trend will cause fire activity to increase a little bit each day. Today's winds will increase the chances of spotting. The environment will become more receptive to embers. Up-hill, terrain driven runs are likely.

Fine Dead Fuel Moisture: 4% unshaded, 7% shaded

Probability of Ignition 70-80%, spotting less than .25 mile with wind gusts and full exposure

Specific Fire Behavior:

DIV A: Suppression actions have been successful, but with the worsening fire weather, an increase in fire behavior cannot be ruled out. Interior pockets of unburned or patchy burned may ignite and actively burn.

DIV F/M: The main concern for this division remains the slope dropping into Maiden Creek. The changes in fuels from drainage bottom up to the ridgeline will cause mixed fire effects. Expect torching with spotting after 1400.

DIV Z: Backing, and flanking will continue as the fire slowly works south and along the ridgeline toward the Three Sisters Peaks. Spread rates and intensity will be low.

DIV T: Pockets of unburned or patchy burns can become active, torch, and throw spots into other divisions. Expect this to happen after 1400 when humidity begins drops below 30%.

DIV R: As the fire continues to spread north, expect up-hill runs through Peral Creek with spotting toward Talache Creek. This will be enhanced if winds and slope align.

Safety

Previously hidden heat sources may now be present,
size-up every situation prior to engaging.

Division/Group Assignment List (ICS 204 WF)

Controlled Unclassified Information//Basic

1. Incident Name:				3.		
SUNSET				Branch:		Division/Group:
2. Operational Period:						A
Date/Time From: 08/20/2025 0600 WED		Date/Time To: 08/20/2025 2200 WED				
4. Operations Personnel						
PLANNING OPS		GREG SCHENK		LINE OPS		KEVIN SMITH
DIVISION/GROUP SUPERVISOR		MACKER BABB JARID CLARK (T)		SAFETY		ADAM CARR JONATHAN WHITE
5. Resources Assigned this Period						
Strike Team / Task Force / Resource Designator	LWD	Leader	Number Persons	Drop Off PT./Time	Pick Up PT./Time	
O-5 TFLD AARON BABIN	08/27		1			
O-75 TFLD JOSH BRANDT	08/27		1			
E-14.1 TFLD(T) CONNOR SHOEBOOKS	08/26		1			
C-4 CR2I GRAYBACK A	08/27	BRYAN LEWMAN	20			
C-6 CR2I MILLER ALPHA	08/28	GARCIA LUIS	22			
E-11 ENG5 E3252	08/26	KEVEN PALASDOS	3			
E-14 ENG6 E-611-2 NANTAHALA	08/26	BRANDON PHILLIPS	4			
E-110 ENG6 E613	09/03	DAVID PERKINS	7	ETA 1100/		
E-20 ENG6 NORTHWEST ENGINE 37	08/31	GARY MOBBS	3			
E-22 ENG6 NORTHWEST ENGINE 27	08/31	SCOTT SHERLOCK	3			
E-23 ENG6 MONTANA FIRE, LLC	08/31	BRENT LUNDE	3			
E-3 WTS2 FOX CREEK	08/27	MOUREEN WEST	1			
E-62 WTS2 OXFORD, INC	08/31	JON ROGERS	1			
E-26 WTS3 NORTHSIDE FIRE DISTRICT	08/28	ALEXIS VANDECOEVERING	1			
O-100 AEMF ALEXA WARNCKE	09/02		1			
E-16 AMB4 HAUSER LAKE BLS	08/28	DAVE STROHTE	2			
O-41 SOFR WILLY CIRONE	09/01		1			
8. Division/Group Communication Summary						
Function	Channel	RX Frequency N/W	RX Tone/NAC	TX Frequency N/W	TX Tone/NAC	Mode
TACTICAL	1	168.0500	110.9	168.0500	110.9	A
COMMAND	7	168.5000	110.9	164.8750	110.9	A
COMMAND	8	170.9750	110.9	168.7000	110.9	A
AIR TO GROUND	14	171.4250		171.4250		A
AIR TO GROUND	15	171.7750		171.7750		A
9. Prepared By (Resource Unit Leader)		Approved By (Planning Section Chief)		Date		Time
M.J. CRANDALL		JOHN GUBEL		08/19/2025		1937

Controlled Unclassified Information//Basic

Page 2 of 2

Division/Group Assignment List (ICS 204 WF)
Controlled Unclassified Information//Basic

1. Incident Name:				3.			
SUNSET				Branch:		Division/Group: F/M	
2. Operational Period:							
Date/Time From: 08/20/2025 0600 WED		Date/Time To: 08/20/2025 2200 WED					
4. Operations Personnel							
PLANNING OPS		GREG SCHENK		LINE OPS		KEVIN SMITH	
DIVISION/GROUP SUPERVISOR		DAVE MACLAY-SCHULTE MITCH ROBBINS (T)		SAFETY		ADAM CARR JONATHAN WHITE	
5. Resources Assigned this Period							
Strike Team / Task Force / Resource Designator		LWD	Leader	Number Persons	Drop Off PT./Time	Pick Up PT./Time	
O-79 TFLD JOHN COOK		08/27		1			
O-98 TFLD CASEY SCHELIN		08/31		1			
O-35 TFLD NICHOLAS CLARK (T)		08/26		1			
O-117 TFLD GUS JACKSON (T)		08/27		1			
O-26 HEQB JARED HAMMATT		08/31		1			
O-37 HEQB DENNIS GILLMER				1			
O-57 HEQB JULIO RAMOS MACIEL (T)		09/02		1			
C-3 CR2I PATRICK CHARLIE		08/27	JOE FOWARD	20			
C-14 CR2I DIAMOND FIRE 11A		08/29	JONATHAN ALVAREZ	20			
C-15 CR2I UMPQUA SZ		08/21	DANE DEXTER	19			
C-18 CR2I PATRICK ECHO		09/01	WILLIAM NEASON	20			
O-112 SMOD NORTH IDAHO SUPPRESSION MOD		09/01	JASMINE CHOWNING	6			
E-39 ENG5 E1152		08/28	OWEN VANDECOEVERING	3			
E-19 ENG6 SEAN ANDREWS FIRE SERVICE		08/31	NATHANIEL KIELE	3			
E-63 DZR2 NELSON BROS TIMBER		08/31	CHAD SHORT	2			
E-2 DZR2 FOUSTS INC		08/26	DARRL UNRUH	2			
E-47 EXC2 EQUIPMENT TECHNOLOGIES, LLC		08/28	DYLAN YARNELL	2			
E-82 FEL1 AKRE LOGGING		08/29		2			
E-123 MBM2 AKRE LOGGING LLC		08/29	ALEX SIMPKINS	2			
8. Division/Group Communication Summary							
Function	Channel	RX Frequency N/W	RX Tone/NAC	TX Frequency N/W	TX Tone/NAC	Mode	
TACTICAL	2	168.2000	110.9	168.200	110.9	A	
COMMAND	7	168.5000	110.9	164.8750	110.9	A	
COMMAND	8	170.9750	110.9	168.7000	110.9	A	
AIR TO GROUND	14	171.4250		171.4250		A	
AIR TO GROUND	15	171.7750		171.7750		A	
9. Prepared By (Resource Unit Leader)		Approved By (Planning Section Chief)			Date	Time	
M.J. CRANDALL		JOHN GUBEL			08/19/2025	0905	

Controlled Unclassified Information//Basic

ICS 204 WF (1/14)

Division/Group Assignment List (ICS 204 WF)

Controlled Unclassified Information//Basic

1. Incident Name:				3.		
SUNSET				Branch:		Division/Group: R
2. Operational Period:						
Date/Time From: 08/20/2025 0600 WED		Date/Time To: 08/20/2025 2200 WED				
4. Operations Personnel						
PLANNING OPS		GREG SCHENK		LINE OPS		KEVIN SMITH
DIVISION/GROUP SUPERVISOR		AARON JONES STEVE AGUIRRE (T)		SAFETY		ADAM CARR JONATHAN WHITE
5. Resources Assigned this Period						
Strike Team / Task Force / Resource Designator	LWD	Leader	Number Persons	Drop Off PT./Time	Pick Up PT./Time	
O-28 TFLD(T) WES MORGAN	08/26		1			
O-62 HEQB ERIC KLEIN	08/27		1			
O-29 HEQB BOB ECK	08/26		1			
E-65.1 HEQB MASON WYMAN (T)	08/28		1			
C-7 CRW1 ELDORADO IHC	08/25	BENJAMIN STRAHAN	24			
C-8 CRW1 TAHOE IHC	08/28	DANIEL GUERRERO	20			
C-12 CRW1 BAKER RIVER IHC	08/27	GARY CHICKS	25			
C-9 CR2I LOLO REGULARS #1	08/28	MARGARET FISK	22			
C-17 CR2I GRAYBACK	08/31	DANIEL SILLER	20			
E-65 ENG6 CATALDO F11	08/28	CLAYTON MCQUADE	3			
E-45 SKG1 EQUIPMENT TECHNOLOGIES, LLC	08/28	KADEN PRATHER	2			
E-46 SKG1 CHAPMAN	08/28	MIKE CHAPMAN	2			
E-2 DZR2 FOUSTS INC	08/26	DARRL UNRUH	2			
E-24 DZR2 AKRE LOGGING LLC	08/28	BRYAN KIRSCHMAN	2			
E-34 DZR3 EQUIPMENT TECHNOLOGIES	08/28	GREG JONES	1			
E-48 FEL1 AKRE LOGGING	08/29	COREY LOVELL	2			
E-81 MBM1 ALTERED ASPECTS	08/29	JAY NORDSTROM	1			
E-59 WTS2 CAMPBELL TRUCKING	08/31	EVERETT HAMMOND	1			
8. Division/Group Communication Summary						
Function	Channel	RX Frequency N/W	RX Tone/NAC	TX Frequency N/W	TX Tone/NAC	Mode
TACTICAL	3	168.6000	110.9	168.6000	110.9	A
COMMAND	7	168.5000	110.9	164.8750	110.9	A
COMMAND	8	170.9750	110.9	168.7000	110.9	A
AIR TO GROUND	14	171.4250		171.4250		A
AIR TO GROUND	15	171.7750		171.7750		A
9. Prepared By (Resource Unit Leader)		Approved By (Planning Section Chief)		Date		Time
M.J. CRANDALL		JOHN GUBEL		08/19/2025		0905

Controlled Unclassified Information//Basic

ICS 204 WF (1/14)

Controlled Unclassified Information//Basic

Page 1 of 1

Division/Group Assignment List (ICS 204 WF)

Controlled Unclassified Information//Basic

1. Incident Name:			3.			
SUNSET			Branch:		Division/Group:	
2. Operational Period:					Z	
Date/Time From: 08/20/2025 0600 WED		Date/Time To: 08/20/2025 2200 WED				
4. Operations Personnel						
PLANNING OPS		GREG SCHENK		LINE OPS		KEVIN SMITH
DIVISION/GROUP SUPERVISOR		CHRIS WHITE TOBY GREENBERG (T)		SAFETY		ADAM CARR JONATHAN WHITE
5. Resources Assigned this Period						
Strike Team / Task Force / Resource Designator	LWD	Leader	Number Persons	Drop Off PT./Time	Pick Up PT./Time	
O-105 TFLD KALIROSE ZURFLUH	09/01		1			
E-7.1 TFLD (T) RYAN KLETTE	08/27		1			
O-27 HEQB JOSHUA WOLFSON	09/01		1			
C-2 CR2I PATRICK BRAVO	08/27	MATT ELLIOT	20			
C-5 CR2I MILLER BRAVO	08/28	MAXWELL LABAHN	22			
C-16 CR2I GRAYBACK 158	08/29	JEREME LOVE	22			
C-19 CR2I TEAKEAN	09/02	PROCTOR BRYDON	21			
E-13 ENG5 INLAND FOREST MGMT 522	08/26	JOHN AILPORT	3			
E-58 ENG6 INLAND FOREST MGMT 621	08/23	DONAVON MAUPIN	2			
E-87 ENG6 BRIAN CAHOON DBA GRAY WOLF CONTRACTING	08/31	DANIEL BLACKWOLF	3			
E-89 ENG6 CAHOON	08/31	JOSEPH KAULEY	3			
E-1 DZR4 TAYLOR & SON	08/27	DAVE TAYLOR	1			
E-80 EXC2 ALTERED ASPECTS	08/30	JAY JEFFERS	2			
E-4 WTS2 CRAIG MARTIN - 492771	08/28	CRAIG MARTIN	1			
E-5 WTS2 RICHARDSON TREE CARE	08/26	SARAH JIMENEZ	2			
E-33 WTS2 FOX CREEK 2	08/29	PAT TRASK	1			
O-11 FMOD CAMPBELL TRUCKING	08/28	TRAVIS PULLER	2			
8. Division/Group Communication Summary						
Function	Channel	RX Frequency N/W	RX Tone/NAC	TX Frequency N/W	TX Tone/NAC	Mode
TACTICAL	5	168.2500	110.9	168.2500	110.9	A
COMMAND	7	168.5000	110.9	164.8750	110.9	A
COMMAND	8	170.9750	110.9	168.7000	110.9	A
AIR TO GROUND	14	171.4250		171.4250		A
AIR TO GROUND	15	171.7750		171.7750		A
9. Prepared By (Resource Unit Leader)		Approved By (Planning Section Chief)		Date		Time
M.J. CRANDALL		JOHN GUBEL		08/19/2025		0905

Controlled Unclassified Information//Basic

ICS 204 WF (1/14)

Controlled Unclassified Information//Basic

ICS 204 WF (1/14)

Division/Group Assignment List (ICS 204 WF)
Controlled Unclassified Information//Basic

1. Incident Name:				3.			
SUNSET				Branch:		Division/Group:	
2. Operational Period:				STAGING			
Date/Time From: 08/20/2025 0600 WED		Date/Time To: 08/20/2025 2200 WED					
4. Operations Personnel							
PLANNING OPS		GREG SCHENK		LINE OPS		KEVIN SMITH	
DIVISION/GROUP SUPERVISOR				SAFETY		ADAM CARR JONATHAN WHITE	
5. Resources Assigned this Period							
Strike Team / Task Force / Resource Designator		LWD	Leader	Number Persons	Drop Off PT./Time	Pick Up PT./Time	
E-132 WTS2 MURRY		09/02		2			
6. Control Operations/Work Assignments:							
7. Special Instructions:							
8. Division/Group Communication Summary							
Function	Channel	RX Frequency N/W	RX Tone/NAC	TX Frequency N/W	TX Tone/NAC	Mode	
COMMAND							
TACTICAL							
LOGISTICS							
AIR TO GROUND							
9. Prepared By (Resource Unit Leader)		Approved By (Planning Section Chief)			Date	Time	
M.J. CRANDALL		JOHN GUBEL			08/19/2025	0905	

AIR OPERATIONS SUMMARY ICS-220						Time Prepared 1900	Date Prepared 8/19/2025	Prepared By Jeff Polack - AOB					
Incident Name / Number Sunset Fire ID-POS-000630		Sunrise 0548	Sunset 1950	"Pumpkin": 2020		Shutdown 2000	Operational Period –Date 8/20/2025	Operational Period – Time 0600-2200					
General Remarks, Safety Notes, Hazards, Air Operations Special Equipment, etc. - Request all (fixed & rotor wing) aviation resources thru assigned Divisions. Line Ops will contact and order fix-wing thru Air Operations if Air Attack is not on station over fire. - Aircraft will cease tactical operations at sundown due to shadows on the lake and steep terrain. Flights after sundown will be to ferry back to base only. - Sunset Fire resources have IA responsibility within TFR. - UAS Operations as requested.						Airport /Helibase Info		TFR/NOTAM Information	Extraction Info (helicopter) Hoist: Two Bear Air located at Glacier Park Intl. Airport (GPI), Bell 429, approx. 94 mi GPI to Sunset Fire area Short Haul: Central MT. Helitack located at Libby, 45nm to Sunset Fire Request Procedure: Order through Coeur d'Alene Dispatch				
						Name Coeur d'Alene		TFR 5/9804					
						Latitude 47 46.46'							
						Longitude 116 49.17'							
						Elevation 2320'		Surface to 10000', freq 118.9					
						Name Sand Point							
						Latitude 48 17.97'							
Longitude 116 33.61'													
Elevation 2131		24 Hrs. in support of upcoming UAS Operations											
Email costs to: 2025.sunset.finance@firenet.gov													
		http://tfr.faa.gov/tfr2/list.html											
Frequencies	RX	Tone	TX	Tone	AM/FM	Position	Name	Phone	Remarks				
						Dispatch	ID-CDC (Coeur d'Alene)	208-772-3283					
A/G Primary	171.4250		171.4250		FM	Dispatch							
A/G Secondary	171.7750		171.7750		FM	IPF FAO	James Grasham	208-660-4139					
						IDL AO	Cory Ivy	208-982-1354					
						AOBD	Steve Croy	540-230-2568					
						AOBD	Jeff Polack	208-813-3447					
National Flt Following	168.6500	110.9	168.6500	110.9	FM								
Air Guard	168.6250		168.6250	110.9	FM								
Incident Specific:													
Air / Air Primary	118.9		118.9		AM	HMGB 54H	Rob Cole	406-461-4777					
Air / Air Secondary	127.2500		127.2500		AM	HMGB 82WL	Clinton Bloom	208-610-9754					
						HMGB 366RA	Jonathan Edwards	208-856-9516					
						HMGB 658HA	Taylor Hess	269-845-5510					
						UASL	Shane Ralston	406-396-3526					
HELICOPTERS						TANKERS / SCOOPERS							
FAA #	Type	Make/Model	Helibase	Avail	Start	Remarks	FAA #	TYPE	Make/Model	Base	Avail	Start	Remarks
54H	3	B-407	COE	0900	0900	Forest IA, Recon							
82WL	1	UH-60	COE	0900	0900	Bucket		Order as Needed					
366RA	1	CH-47	SZT	0900	0900	Bucket							
658HA	2	UH-1H	COE	0900	0900	Bucket							
44HX	3	B407	S59	0900	0900	Short Haul, Recon, Tactical							
UNMANNED AIRCRAFT SYSTEMS						FIXED WING							
FAA #	Type	Model	Call Sign	Avail	Start	Remarks	FAA #	Type	Make/Model	Base	Av	Start	Remarks
	T-3 T-3	Alta-X Alta-X	UR31 UR33		As Requested	Sunset UAS Mod Baker River IHC	N721TB		AC-690B	COE	1000	0900	Sunset Air Attack

INCIDENT RADIO COMMUNICATIONS PLAN I-205				1. INCIDENT NAME			2. DATE/TIME PREPARED			3. OPERATIONAL PERIOD DATE/TIME		
				SUNSET			8/19/2025			8/20/25 0600 THRU 2200		
4. BASIC RADIO CHANNEL UTILIZATION												
Ch #	Function	Channel Name	Assignment	RX Freq	N/W	RX Tone/NAC	TX Freq	N/W	TX Tone/NAC	Mode Analog (A) Digital (D) Mixed (M)	Remarks	
1	TAC	TAC 1	DIV A	168.0500	N	110.9	168.0500	N	110.9	A	DIV A	
2	TAC	TAC 2	DIV F/M	168.2000	N	110.9	168.2000	N	110.9	A	DIV F/M	
3	TAC	TAC 3	DIV R	168.6000	N	110.9	168.6000	N	110.9	A	DIV R	
4	TAC	TAC 4	DIV T	166.7250	N	110.9	166.7250	N	110.9	A	DIV T	
5	TAC	TAC 5	DIV Z	168.2500	N	110.9	168.2500	N	110.9	A	DIV Z	
6	TAC	TAC 6	STRUCTURE	166.7750	N	110.9	166.7750	N	110.9	A	STRUCTURE GROUP	
7	COMMAND	CMD 7	COMMAND	168.5000	N	110.9	164.8750	N	110.9	A	CAPE HORN	
8	COMMAND	CMD 8	COMMAND	170.9750	N	110.9	168.7000	N	110.9	A	LITTLE BLACK TAIL	
9	COMMAND	RESERVED			N							
10	DISPATCH	SCHWEITZER	LOCAL REPEATER	159.3375	N	100.0	151.4375	N	136.5	A	IDL SCHWEITZER TO COEUR D ALEANE DISPATCH	
11	DISPATCH	HOODOO	LOCAL REPEATER	159.4500	N	123.0	151.2200	N	123.0	A	IDL HOODOO TO COEUR D ALEANE DISPATCH	
12	TAC	IDL DIR 2	IA TAC	159.2850	N	77.0	159.2850	N	77.0	A	IDL DIR 2 (IA TAC)	
13	TAC	VMED 28	MEDIVAC	155.3400	N		155.3400	N		A	AIR MED	
14	A/G	A/G PRI	AIR TO GROUND	171.4250	N		171.4250	N		A	A/G PRIMARY	
15	A/G	A/G SEC	AIR TO GROUND	171.7750	N		171.7750	N		A	A/G SECONDARY	
16	AIRGUARD	AIRGUARD	EMERGENCY	168.6250	N		168.6250	N	110.9	A	EMERGENCY	
5. Special Instructions:												
6. I-205 Prepared By: Communications Unit Leader				Name: Mike Scherer				Signature: PAUL SCHERER				

Digitally signed by PAUL SCHERER
Date: 2025.08.19 19:27:46 -0700



Safety Message

ON A HILLSIDE WHERE ROLLING MATERIAL CAN IGNITE FUEL BELOW

When firefighters find themselves in Watchout Situation #13, they must answer the following questions:

- Can you locate/construct a line to prevent material from rolling below? What do you call line that catches rolling material? Describe how you would construct this type of line and what factors you would have to consider (e.g., slope, fuels, etc.)
- Will you get enough warning of rolling material to prevent being hit by it? Who needs to be watching for rolling material? What kinds of warning systems could you establish?
- Can you see where any material that rolls below you goes and what it does? What can happen when material rolls out of the fire and below you out of view? What needs to be done to mitigate this danger?
- Is the area free of large amounts of flashy fuels? Review the Common Denominators of Tragedy Fires.
- Is the area free of chimneys, gullies, and steep slopes? Review the Common Denominators of Tragedy Fires.
- Do you have two escape routes so you can go either way? Talk about where you're most likely escape routes and safety zones will be when you are on a hillside where rolling material can ignite fuel below.
- To reduce the risks:
 - Post lookouts.
 - Consider locating line in a defensible position. Talk about steep fires where you have had material rolling out below you and how you dealt with it.

Safety is your Responsibility!

Northern Rockies Complex Incident Management Team 5

MEDICAL PLAN (ICS 206)

1. Incident Name: Sunset	2. Operational Period: Date From: 08/20/25 Time From: 0600	Date To: 08/20/25 Time To: 2200
------------------------------------	--	------------------------------------

3. Air Ambulances:

Name	Location	Contact Number(s)/Frequency	Paramedics on Site?
Life Flight Network	Sandpoint and Coeur d'Alene, ID	911	<input checked="" type="checkbox"/> Yes <input type="checkbox"/> No
Two Bear Air	Kalispell, MT (hoist)	911	<input type="checkbox"/> Yes <input checked="" type="checkbox"/> No
Central Montana Helitack	Libby, MT (shorthaul)	Air Ops/CDA Dispatch	<input type="checkbox"/> Yes <input checked="" type="checkbox"/> No
			<input type="checkbox"/> Yes <input type="checkbox"/> No
			<input type="checkbox"/> Yes <input type="checkbox"/> No
			<input type="checkbox"/> Yes <input type="checkbox"/> No

4. Transportation (indicate air or ground):

Ambulance Service	Location	Contact Number(s)/Frequency	Level of Service
E-16 Houser Lake	Div. Alpha-Staged Careywood Fire Station	Command	<input type="checkbox"/> ALS <input checked="" type="checkbox"/> BLS
E-42 Freemont Ambulance	Div. Romeo-Staged at Talache Road	Command	<input checked="" type="checkbox"/> ALS <input type="checkbox"/> BLS
			<input type="checkbox"/> ALS <input type="checkbox"/> BLS
			<input type="checkbox"/> ALS <input type="checkbox"/> BLS

5. Hospitals:

Hospital Name	Address, Latitude & Longitude if Helipad	Contact Number(s)/Frequency	Travel Time		Trauma Center	Burn Center	Helipad
			Air	Ground			
Kootenai Health Coeur d'Alene, ID	LAT- N 47 41 45.658 LONG- W 116 47 41.684	208-625-5700	30 min	75 min	<input checked="" type="checkbox"/> Yes Level: 2	<input type="checkbox"/> Yes <input checked="" type="checkbox"/> No	<input checked="" type="checkbox"/> Yes <input type="checkbox"/> No
Bonner General Sandpoint ID	LAT- N 48 16.650 LONG- W 116 32.980	208-263-1441	30 min	60 min	<input checked="" type="checkbox"/> Yes Level: 4	<input type="checkbox"/> Yes <input checked="" type="checkbox"/> No	<input checked="" type="checkbox"/> Yes <input type="checkbox"/> No
					<input type="checkbox"/> Yes Level: _____	<input type="checkbox"/> Yes <input type="checkbox"/> No	<input type="checkbox"/> Yes <input type="checkbox"/> No
					<input type="checkbox"/> Yes Level: _____	<input type="checkbox"/> Yes <input type="checkbox"/> No	<input type="checkbox"/> Yes <input type="checkbox"/> No
					<input type="checkbox"/> Yes Level: _____	<input type="checkbox"/> Yes <input type="checkbox"/> No	<input type="checkbox"/> Yes <input type="checkbox"/> No

6. Special Medical Emergency Procedures:

Bonner General Helipad can only accommodate Type 3 ships. Type 2 will need to land at Sandpoint airport(KSZT) with a local ambulance.

☒ Check box if aviation assets are utilized for rescue. If assets are used, coordinate with Air Operations.

7. Prepared by (Medical Unit Leader): Name: Steven Kendley Signature: Steven Kendley

Digitally signed by Steven Kendley
Date: 2025.08.19 09:21:34 -0600

8. Approved by (Safety Officer): Name: Robert Spence Signature: ROBERT SPENCE

Digitally signed by ROBERT SPENCE
Date: 2025.08.19 19:37:43 -0600

ICS 206	IAP Page _____	Date/Time: _____
---------	----------------	------------------

FINANCE MESSAGE

8/20/25



Got broken or damaged stuff? Hoping the fire will replace it?

Come see COMP/CLMS and learn how to submit an Incident Replacement request!

You will need:

1. The broken/damaged item (or photos of it),
2. A completed and signed OF-289 (see COMP or Ordering for a blank form),
and
3. A General Message requesting an S-number against the fire code for the item.

Tell the story on the OF-289 of what happened to your item and how the fire environment was responsible for causing the damage.....the more details, the better. This will help us determine whether or not we can approve your request.

Holler or come see us with any questions!

Finance Phone: 208.867.9570

Finance Email: 2025.sunset.finance@firenet.gov

Got Fire Photos?

Please email to 2025.sunset@firenet.gov or text 406-560-2522.

Include a location/where photo was taken and your incident position.

Where people can go to get information:



Sunset Fire
Fire Information 208-990-1881
2025.sunset@firenet.gov



Sign up for Idaho
Department of Lands Alerts



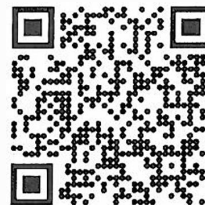
See Idaho Department of
Lands Alerts

Sunset Fire Inciweb



Idaho Department of Lands
Facebook Page

Idaho Department of
Lands X Page



Division Supply Order

Order Number:		Date -		Division -	
Order taken in Communications by:				RADO or COML confirmation:	
DIVS Supervisor:				Date & Time Needed:	
Delivery Contact:				Delivery Location:	
Cell Phone #:				UTM	
Radio Channel Number:				Lat: Long:	
Mode of Delivery (Circle Means):		Ground Support		DP/LZ:	
Division will pick up		Deliver to Helibase		Other:	
SPUL Confirmation can be filled as needed (Circle): Yes or No - Requiring at least 24 hours to fill.					
Item	Description:	Quantity	Comments		
	Hose Lay Kit , 1000 Feet = (10) 1 1/2" Hose, and 5 Each of: 1" Hose, 1 1/2" Wyes, 1 1/2" to 1" Reducers, and 1" Forester Nozzles				
1		1000 Feet	4	4000 Feet	
2		2000 Feet	5	5000 Feet	
3		3000 Feet	6	6000 Feet	
	Garden Hose Kit , 500 Feet = (10) 3/4" Hose, and (5 Each): 3/4" Wye, 3/4" Shutoff, 3/4" Nozzle, 1" Wye, and 1" to 3/4" Reducers)				
7		500 Feet	10	3000 Feet	
8		1000 Feet	11	4000 Feet	
9		2000 Feet	12	5000 Feet	
	Water Handling Equipment:		Item #	Description	Quantity
13	Hose: 1 1/2" (100')	LG		Line Tools:	
14	1" (100')	LG	40	Pulaski	EA
15	3/4" (50' Toy/Garden)	LG	41	Combi	EA
16	Gated Wye: 1 1/2"	EA	42	McCloud	EA
17	1"	EA	43	Shovel	EA
18	3/4"	EA	44	Water: Cubies	EA
19	Reducer: 1 1/2" X 1"	EA	45	Bottled	CS
20	1" X 3/4"	EA	46	Gatorade	CS
21	Nozzle: 1" Forester	EA	47	MRE's	BX
22	1" Mystery (KK)	EA	48	Flagging: Lime Green	RO
23	1 1/2" Red Barrel	EA	49	Pink	RO
24	3/4" Brass		50	Orange	RO
25	Shutoff Values: 3/4"	EA	51	Killer Tree	RO
26	Pumpkin or Porta-Tank, 1800 gal.	EA	52	Wrap, Structural	RO
27	Blivets, Slingable 55 Gal	EA	53	Other:	
28	Mopup Kits 3 Person	EA	54		
29	Backpack Pumps	EA	55		
30	Sprinkler Kits	EA	56		
31	Foam (5 GALS)	PL	57		
32	Mark III Kits	KT	58		
33	Drip Torch	EA	59		
34	Fusees (72/Case)	CS	60		
35	Chainsaw Kit	KT	61	Bar Oil	Gal
36	Fuel, 5 gallons:	Gas	Can	62	Diesel, 5 gallon
37	Mark III (20:1)		Can	63	Not Mixed
38	Chainsaw (50:1)	Mixed	Can	64	2.6 oz/ Gal
				65	12.8 oz/ 5 Gal
39	Drip Torch (3:2)		Can		BT



Northern Rockies Chainsaw Parts Order Form

Please see the back page for part order numbers and items requiring an approved Property Loss and Damage form.

Name:	Gen. Msg #:
Resource #:	Request Date:
Contact #:	Need by Date/Time:
TO BE FILLED BY: (circle one):	<input type="checkbox"/> Buying Team <input type="checkbox"/> Home Unit <input type="checkbox"/> Cache

Chainsaw Information

Make (circle one or fill in):	<input type="checkbox"/> Stihl <input type="checkbox"/> Husqvarna <input type="checkbox"/> Other:
Model:	
Serial #	
Bar Length (circle one):	<input type="checkbox"/> 20" <input type="checkbox"/> 24" <input type="checkbox"/> 28" <input type="checkbox"/> 30" <input type="checkbox"/> 32" <input type="checkbox"/> 36" <input type="checkbox"/> Other:

Request:

Part Name and Number	Quantity	Part Name and Number	Quantity

For Sprocket & Chain Orders (circle one or fill in):

# of Drivers:	
Pitch (*):	<input type="checkbox"/> 3/8" <input type="checkbox"/> .325" <input type="checkbox"/> Other:
Gauge:	<input type="checkbox"/> .50 <input type="checkbox"/> .063 <input type="checkbox"/> Other:
Tooth Layout:	<input type="checkbox"/> Full <input type="checkbox"/> Semi-Skip <input type="checkbox"/> Full Skip
Tooth Cut:	<input type="checkbox"/> Chisel <input type="checkbox"/> Semi-Chisel <input type="checkbox"/> Other:
# of Sprocket Teeth:	

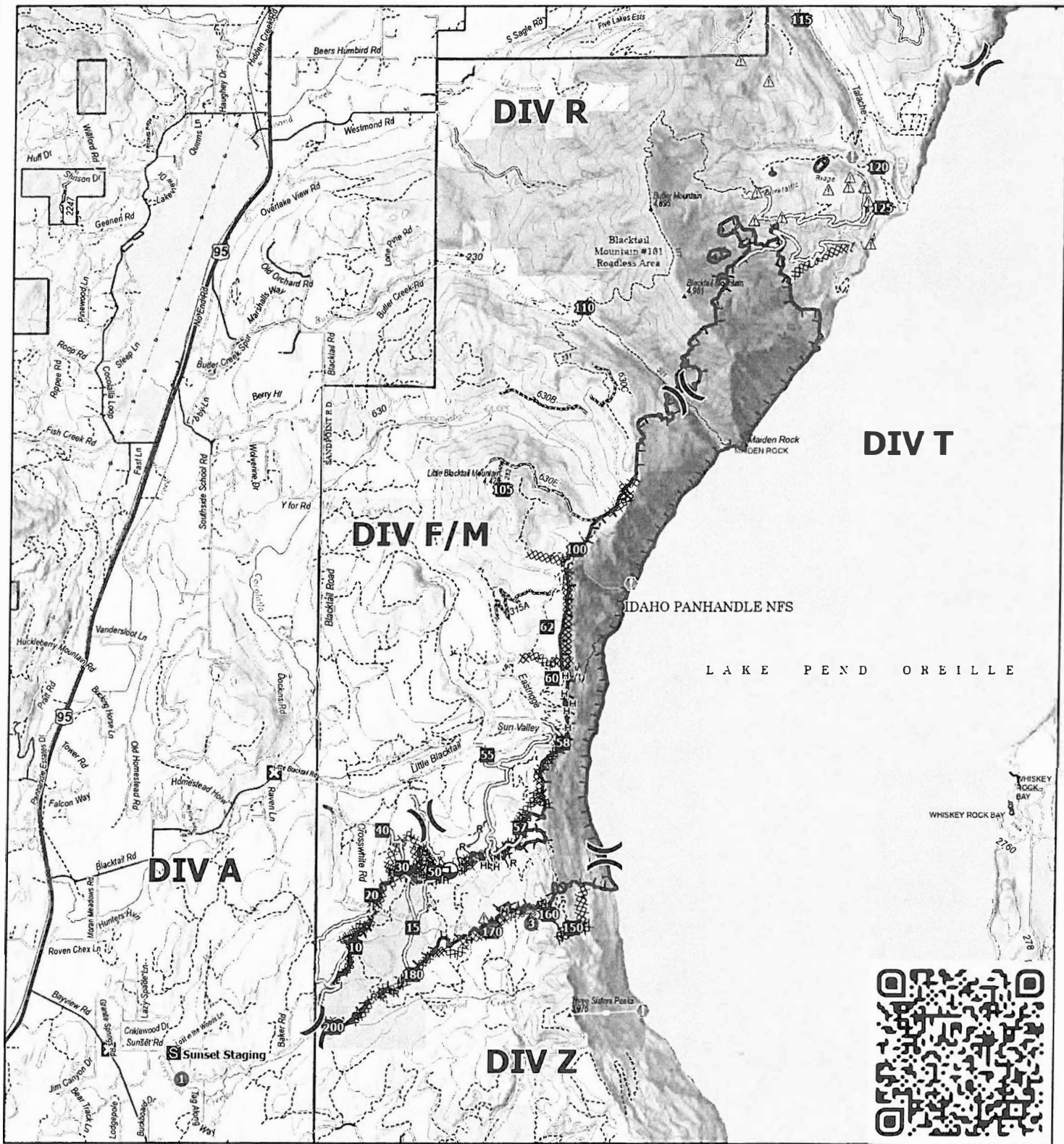
☐ Concurrence (Line Supervisor i.e. DIVS): _____

☐ Supply Unit Leader has checked that the items ordered do not need an approved Property Loss & Damage Form, or that the approval is attached. (Supply Unit Leader checks box and initials here: _____).

First source of supply is Cache, shaded blocks indicate items available thru Northern Rockies Cache. Items requiring an approved Property Loss and Damage form are in a separate list at the bottom.												
PART	034/341	360/MS360	MS361	MS362	038/381	044/MS440	MS441	460/MS461	MS462	0640/650	MS660	MS880
Spark Plug (NFES# 000344)	Bosch WSR6F NGK BPMR7A Champion RCJ6Y	Bosch WSR6F NGK BPMR7A Champion RCJ6Y	Bosch WSR6F NGK BPMR7A Champion RCJ6Y	Bosch WSR6F NGK BPMR7A Champion RCJ6Y	Bosch WSR6F NGK BPMR7A Champion RCJ6Y	Bosch WSR6F NGK BPMR7A Champion RCJ6Y	Bosch WSR6F NGK BPMR7A Champion RCJ6Y	Bosch WSR6F NGK BPMR7A Champion RCJ6Y	Bosch USR7AC NGK CMR6H	Bosch WSR6F NGK BPMR7A Champion RCJ6Y	Bosch WSR6F NGK BPMR7A Champion RCJ6Y	Bosch WSR6F NGK BPMR7A Champion RCJ6Y
Needle Cage Bearing (NFES# 066565)	9512-933-2380	9512-933-2380	9512-933-2380	9512-933-2380	9512-933-3150	9512-933-2380	9512-933-2380	9512-933-2380	9512-933-2380	9512-933-2382	9512-933-2382	9512-933-3170
Retaining Washer for Rim Sprocket	0000-958-1022	0000-958-1022	0000-958-1032	0000-958-1032	0000-958-1231	0000-958-1032	0000-958-1032	0000-958-1032	0000-958-1032	0000-958-1032	0000-958-1032	0000-958-1236
E Clip (NFES# 066517)	9460-624-0801	9460-624-0801	9460-624-0801	9460-624-0801	9460-624-1001	9460-624-0801	9460-624-0801	9460-624-0801	9460-624-0801	9460-624-0801	9460-624-0801	9460-624-1001
Fuel Filter	0000-350-3504	0000-350-3504	0000-350-3504	0000-350-3504	0000-350-3504	0000-350-3504	0000-350-3504	0000-350-3504	0000-350-3518	0000-350-3504	0000-350-3500	0000-350-3504
Air Filter - HD (NFES# 066756)	1125-120-1626	1125-120-1612 1125-120-1626	1135-120-1600	1140-140-4401 1140-140-4402	1119-120-1611	0000-140-4402	0000-120-1654	0000-120-1654	1142-140-4402	0000-140-4402	0000-140-4402	0000-140-4402
Pre Filter - OEM	N/A	N/A	N/A	N/A	1119-120-1500	0000-141-0300	0000-141-0300	0000-141-0300	N/A	0000-141-0300	0000-141-0300	0000-141-0300
Bar Nut (NFES# 06661)	0000-955-0801	0000-955-0801	0000-955-0801	0000-955-0801	0000-955-0801	0000-955-0801	0000-955-0801	0000-955-0801	0000-995-0803	0000-955-0801	0000-955-0801	0000-955-0903
Inner Slide Plate	1122-664-1000	1122-664-1000	1122-664-1000	1122-664-1000	1119-664-1000	1128-664-1001	1138-664-1000	1128-664-1001	1128-664-1001	1128-664-1001	1128-664-1001	1124-664-1001
STIHL RAPI D - Super (RS)												
Chain 3/8"PI TCH* .050" GA - DR												
20" - 72 DR	3623-005-0072	3623-005-0072	3623-005-0072	3623-005-0072	3623-005-0072	3623-005-0072	3623-005-0072	3623-005-0072	3623-005-0072	3623-005-0072	3623-005-0072	3623-005-0072
25" - 84 DR (NFES# 006500)	3623-005-0084	3623-005-0084	3623-005-0084	3623-005-0084	3623-005-0084	3623-005-0084	3623-005-0084	3623-005-0084	3623-005-0084	3623-005-0084	3623-005-0084	3623-005-0084
28" - 91 DR	3623-005-0091	3623-005-0091	3623-005-0091	3623-005-0091	3623-005-0091	3623-005-0091	3623-005-0091	3623-005-0091	3623-005-0091	3623-005-0091	3623-005-0091	3623-005-0091
32" - 105 DR	N/A	N/A	N/A	N/A	N/A	3623-005-0105	3623-005-0105	3623-005-0105	3623-005-0105	3623-005-0105	3623-005-0105	3623-005-0105
STIHL RAPI D - Super - Full Skip (RSF)												
Chain 3/8" PITCH * .050" GA - DR												
20" - 72 DR	N/A	3676-005-0072	3676-005-0072	3676-005-0072	3676-005-0072	3676-005-0072	3676-005-0072	3676-005-0072	3676-005-0072	3676-005-0072	3676-005-0072	3676-005-0072
25" - 84 DR	3676-005-0084	3676-005-0084	3676-005-0084	3676-005-0084	3676-005-0084	3676-005-0084	3676-005-0084	3676-005-0084	3676-005-0084	3676-005-0084	3676-005-0084	3676-005-0084
28" - 91 DR	3676-005-0091	3676-005-0091	3676-005-0091	3676-005-0091	3676-005-0091	3676-005-0091	3676-005-0091	3676-005-0091	3676-005-0091	3676-005-0091	3676-005-0091	3676-005-0091
32" - 105 DR	N/A	N/A	N/A	N/A	N/A	3676-005-0105	3676-005-0105	3676-005-0105	3676-005-0105	3676-005-0105	3676-005-0105	3676-005-0105
Bar oil: Quantity - Gallon	NFES # 1880											
Bar oil: Quantity - Quart	NFES # 1869											
2 Cycle Oil: Quantity - Quart	NFES # 0341											

The following parts require an approved Property Loss & Damage form prior to ordering:

Guide Bars - 3/8" -.050" GA (STIHL ROLLOMATIC - ES)												
20"	3003-000-8822	3003-000-8822	3003-000-8822	3003-000-8822	3003-000-8822	3003-000-8822	3003-000-8822	3003-000-8822	3003-000-8822	3003-000-8822	3003-000-8822	3003-000-8822
25" (NFES# 066584)	N/A	3003-000-8830	3003-000-8830	3003-000-8830	3003-000-8830	3003-000-8830	3003-000-8830	3003-000-8830	3003-000-8830	3003-000-8830	3003-000-8830	3003-000-8830
28"	N/A	N/A	N/A	N/A	N/A	3003-000-8838	3003-000-8838	3003-000-8838	3003-000-8838	3003-000-8838	3003-000-8838	3003-000-8838
32"	N/A	N/A	N/A	N/A	N/A	3003-000-8846	3003-000-8846	3003-000-8846	3003-000-8846	3003-000-8846	3003-000-8846	3003-000-8846
Rim Sprocket Kit 3/8 - 7T	1125-007-1040	1125-007-1223	1128-007-1000	1135-007-1002	1119-007-1003	1128-007-1000	1128-007-1000	1128-007-1017	1128-007-1000	1122-007-1000	1122-007-1000	N/A
Clutch Drum	Order Sprocket Kit	Order Sprocket Kit	Order Sprocket Kit	Order Sprocket Kit	Order Sprocket Kit	Order Sprocket Kit	Order Sprocket Kit	Order Sprocket Kit	Order Sprocket Kit	Order Sprocket Kit	Order Sprocket Kit	Order Sprocket Kit
Rim Sprocket 3/8 7T (NFES# 066652)	0000-642-1231	0000-642-1023	0000-642-1223	0000-642-1223	0000-642-1223	0000-642-1223	0000-642-1223	0000-642-1223	0000-642-1223	0000-642-1223	0000-642-1223	N/A
Rim sprocket kit 3/8 - 8T	N/A	N/A	1128-007-1001	1128-007-1001	N/A	1128-007-1001	1128-007-1001	1128-007-1001	1128-007-1001	1122-007-1001	1122-007-1001	1124-007-1025
Clutch Drum	Order Sprocket Kit	Order Sprocket Kit	Order Sprocket Kit	Order Sprocket Kit	Order Sprocket Kit	Order Sprocket Kit	Order Sprocket Kit	Order Sprocket Kit	Order Sprocket Kit	Order Sprocket Kit	Order Sprocket Kit	Order Sprocket Kit
Rim Sprocket 3/8 - 8T	N/A	0000-642-1216	0000-642-1216	0000-642-1216	0000-642-1216	0000-642-1216	0000-642-1216	0000-642-1216	0000-642-1216	0000-642-1216	0000-642-1216	0000-642-1216
Clutch	1127-160-2050	1125-160-2005	1128-160-2004	1138-160-2010	1119-160-2000	1128-160-2001	1138-160-2010	1128-160-2004	1142-160-2000	1122-160-2005	1122-160-2002	1124-160-2005
Chain Adjuster Kit	1125-007-1036	1125-007-1021	1125-007-1021	1125-007-1021	1118-664-1600 1120-664-1500	1125-007-1021	1125-007-1021	1125-007-1021	1125-007-1021	1125-007-1021	1125-007-1021	1124-007-1008
Bump Strip	1121-648-6610	1121-648-6610	1121-648-6610	1121-648-6610	1121-648-6610	1121-648-6610	1121-648-6610	1121-648-6610	1121-648-6610	1121-648-6610	1121-648-6610	1121-648-6610
Starter Rope W/handle	1128-190-3400	1128-190-3400	1128-190-3400	1128-190-3400	1128-190-3400	1128-190-3400	1128-190-3400	1128-190-3400	1128-190-3400	1128-190-3400	1128-190-3400	1128-190-3400
Worm Gear (Oiler)	1125-640-7110	1125-640-7110	1128-640-7112	1128-640-7112	1119-642-1501	1128 640 7112	1128 640 7112	1128 640 7112	1128-640-7112	1122-640-7105	1122-640-7105	1124-640-7512
Manifold Boot	1125 141 2200	1125 141 2200	1135 141 2200	1140 140 2503	1119 140 2500	1128 141 2204	1138 140 2508	1128 141 2204	1142 141 2200	1122 141 2200	1122 141 2201	1124 141 2202



IAP

Sunset

IDPOS-000630

08/20/2025 Day

3,208 acres at 08/18/2025 0015

0 0.75 1.5

Miles

1:80,000 | RIST | 8/19/2025 1848

IR Image Interpretation
North American 1983 Datum, Lat/Long Grid

- | | | | | | |
|-------------------|-----------------------------------|-------------------------|--|-----------------------------|---------------------------|
| ▲ Hazard | XXXX Completed Dozer Line | — Contained Fire Edge | — Secondary Paved | ----- Spur | Forest Service Lands |
| ● Helispot | Completed Fuel Break | — Uncontained Fire Edge | — Secondary Dirt | ----- Primitive | Bureau of Land Management |
|)(Division Break | Completed Hand Line | □ Wildfire Perimeter | — Dirt (Not Paved) | ----- FS Closed Road | State |
| ■ Drop Point | Completed Mixed Construction Line | — Trail | — Road, Not Maintained for Passenger Car | ----- Ground Line | Administrative |
| ⊠ Closure | R Completed Road as Line | — Primary Highway | | ----- Natural Gas Pipelines | FS Boundary |
| ⊞ Staging Area | Access Route | | | ----- USFS Roadless Areas | |
| ⊙ Draft Site | | | | | |
| ⊕ Value at Risk | | | | | |

MEDICAL PLAN (ICS 206 WF)

Controlled Unclassified Information//Basic

Medical Incident Report

FOR A NON-EMERGENCY INCIDENT, WORK THROUGH CHAIN OF COMMAND TO REPORT AND TRANSPORT INJURED PERSONNEL AS NECESSARY.

FOR A MEDICAL EMERGENCY: IDENTIFY ON-SCENE INCIDENT COMMANDER BY NAME AND POSITION AND ANNOUNCE "MEDICAL EMERGENCY" TO INITIATE RESPONSE FROM IMT COMMUNICATIONS/DISPATCH.

Use the following items to communicate situation to communications/dispatch.

1. CONTACT COMMUNICATIONS / DISPATCH (Verify correct frequency prior to starting report)

Ex: "Communications, Div. Alpha. Stand-by for Emergency Traffic."

2. INCIDENT STATUS: Provide incident summary (including number of patients) and command structure.

Ex: "Communications, I have a Red priority patient, unconscious, struck by a falling tree. Requesting air ambulance to Forest Road 1 at (Lat./Long.) This will be the Trout Meadow Medical, IC is TFLD Jones. EMT Smith is providing medical care."

Severity of Emergency / Transport Priority	<input type="checkbox"/> RED / PRIORITY 1 Life or limb threatening injury or illness. Evacuation need is IMMEDIATE Ex: Unconscious, difficulty breathing, bleeding severely, 2° – 3° burns more than 4 palm sizes, heat stroke, disoriented. <input type="checkbox"/> YELLOW / PRIORITY 2 Serious Injury or illness. Evacuation may be DELAYED if necessary. Ex: Significant trauma, unable to walk, 2° – 3° burns not more than 1-3 palm sizes. <input type="checkbox"/> GREEN / PRIORITY 3 Minor Injury or illness. Non-Emergency transport Ex: Sprains, strains, minor heat-related illness.
Nature of Injury or Illness & Mechanism of Injury	Brief Summary of Injury or Illness (Ex: Unconscious, Struck by Falling Tree)
Evacuation Request	Air Ambulance / Short Haul/Hoist Ground Ambulance / Other
Patient Location	Descriptive Location & Lat. / Long. (WGS84)
Incident Name	Geographic Name + Medical (Ex: Trout Meadow Medical)
On-Scene Incident Commander	Name of on-scene IC of Incident within an Incident (Ex: TFLD Jones)
Patient Care	Name of Care Provider (Ex: EMT Smith)

3. INITIAL PATIENT ASSESSMENT: Complete this section for each patient as applicable (start with the most severe patient)

Patient Assessment: See IRPG PAGE 106

Treatment:

4. EVACUATION PLAN:

Evacuation Location (if different): (Descriptive Location (drop point, intersection, etc.) or Lat. / Long.) Patient's ETA to Evacuation Location:

Helispot / Extraction Site Size and Hazards:

5. ADDITIONAL RESOURCES / EQUIPMENT NEEDS:

Example: Paramedic/EMT, crews, immobilization devices, AED, oxygen, trauma bag, IV/fluid(s), splints, rope rescue, wheeled litter, HAZMAT, extrication

6. COMMUNICATIONS: Identify State Air/Ground EMS Frequencies and Hospital Contacts as applicable

Function	Channel Name/Number	Receive (RX)	Tone/NAC *	Transmit (TX)	Tone/NAC *
COMMAND					
AIR-TO-GRND					
TACTICAL					

7. CONTINGENCY: Considerations: If primary options fail, what actions can be implemented in conjunction with primary evacuation method? Be thinking ahead..

8. ADDITIONAL INFORMATION: Updates/Changes, etc.

REMEMBER: Confirm ETAs of resources ordered. Act according to your level of training. Be Alert. Keep Calm. Think Clearly. Act Decisively.