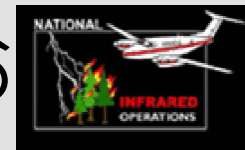
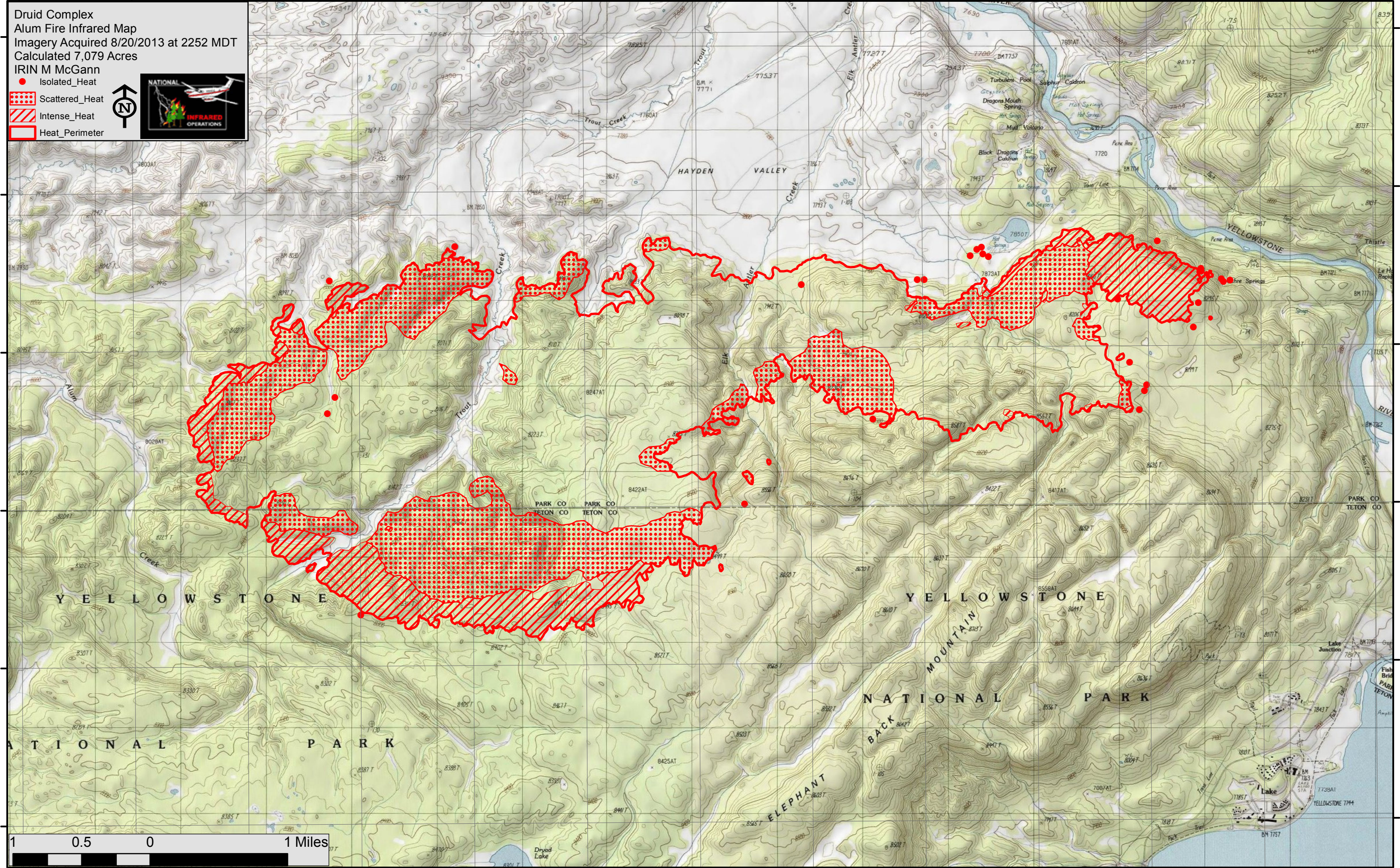


110°35'0"W 110°34'0"W 110°33'0"W 110°32'0"W 110°31'0"W 110°30'0"W 110°29'0"W 110°28'0"W 110°27'0"W 110°26'0"W 110°25'0"W 110°24'0"W 110°23'0"W

Druid Complex  
 Alum Fire Infrared Map  
 Imagery Acquired 8/20/2013 at 2252 MDT  
 Calculated 7,079 Acres  
 IRIN M McGann

- Isolated\_Heat
- ▨ Scattered\_Heat
- ▧ Intense\_Heat
- ▭ Heat\_Perimeter

110°35'0"W 110°34'0"W 110°33'0"W 110°32'0"W 110°31'0"W 110°30'0"W 110°29'0"W 110°28'0"W 110°27'0"W 110°26'0"W 110°25'0"W 110°24'0"W 110°23'0"W

44°38'0"N  
44°37'0"N  
44°36'0"N  
44°35'0"N  
44°34'0"N  
44°33'0"N

44°38'0"N  
44°37'0"N  
44°36'0"N  
44°35'0"N  
44°34'0"N  
44°33'0"N