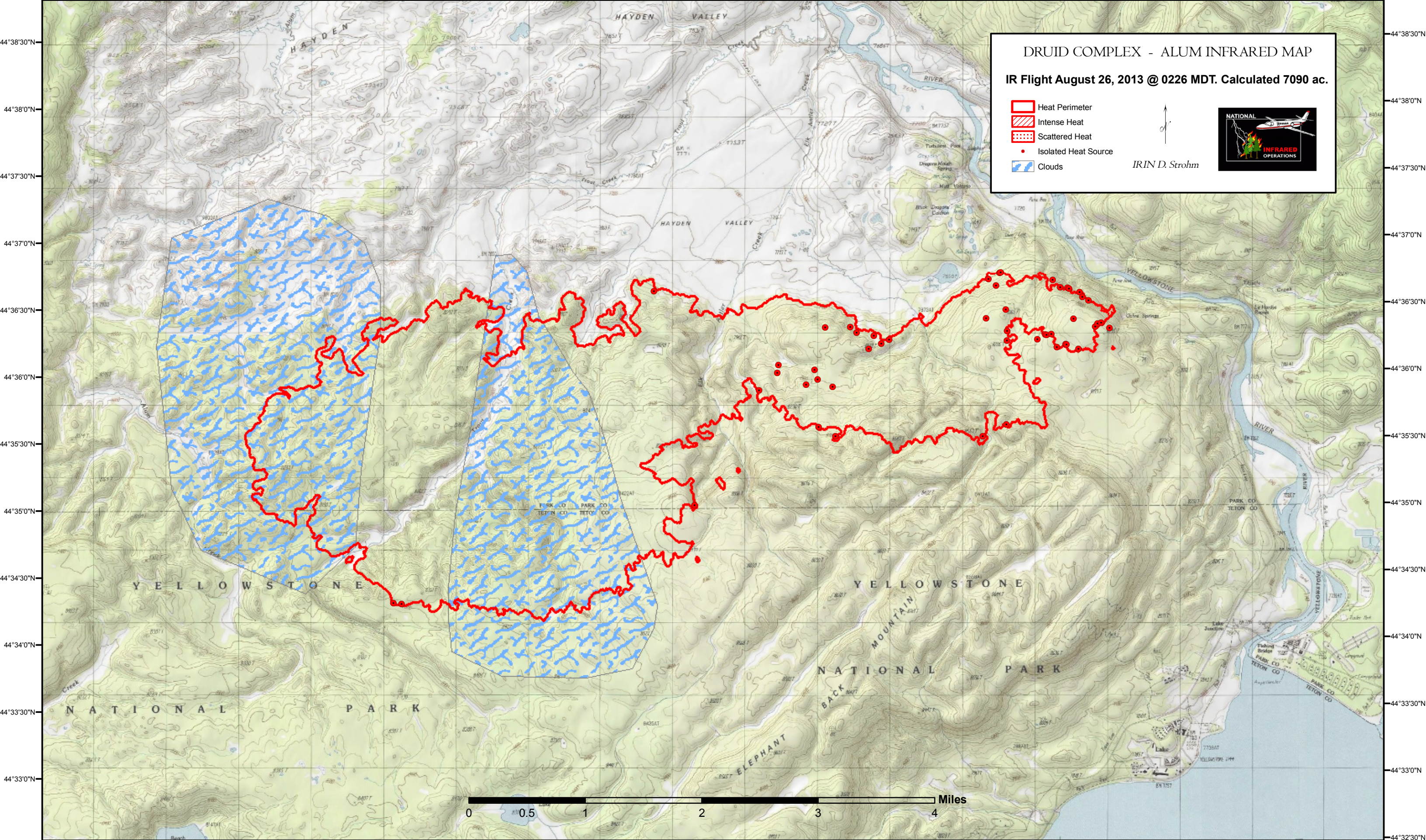








110°35'30"W 110°35'0"W 110°34'30"W 110°34'0"W 110°33'30"W 110°33'0"W 110°32'30"W 110°32'0"W 110°31'30"W 110°31'0"W 110°30'30"W 110°30'0"W 110°29'30"W 110°29'0"W 110°28'30"W 110°28'0"W 110°27'30"W 110°27'0"W 110°26'30"W 110°26'0"W 110°25'30"W 110°25'0"W 110°24'30"W 110°24'0"W 110°23'30"W 110°23'0"W 110°22'30"W 110°22'0"W




**DRUID COMPLEX - ALUM INFRARED MAP**

**IR Flight August 26, 2013 @ 0226 MDT. Calculated 7090 ac.**

-  Heat Perimeter
-  Intense Heat
-  Scattered Heat
-  Isolated Heat Source
-  Clouds

 *IRIN D. Strohm*



0 0.5 1 2 3 4 Miles

110°35'30"W 110°35'0"W 110°34'30"W 110°34'0"W 110°33'30"W 110°33'0"W 110°32'30"W 110°32'0"W 110°31'30"W 110°31'0"W 110°30'30"W 110°30'0"W 110°29'30"W 110°29'0"W 110°28'30"W 110°28'0"W 110°27'30"W 110°27'0"W 110°26'30"W 110°26'0"W 110°25'30"W 110°25'0"W 110°24'30"W 110°24'0"W 110°23'30"W 110°23'0"W 110°22'30"W 110°22'0"W

44°38'30"N  
44°38'0"N  
44°37'30"N  
44°37'0"N  
44°36'30"N  
44°36'0"N  
44°35'30"N  
44°35'0"N  
44°34'30"N  
44°34'0"N  
44°33'30"N  
44°33'0"N

44°38'30"N  
44°38'0"N  
44°37'30"N  
44°37'0"N  
44°36'30"N  
44°36'0"N  
44°35'30"N  
44°35'0"N  
44°34'30"N  
44°34'0"N  
44°33'30"N  
44°33'0"N