

110°34'0"W 110°33'30"W 110°33'0"W 110°32'30"W 110°32'0"W 110°31'30"W 110°31'0"W 110°30'30"W 110°30'0"W 110°29'30"W 110°29'0"W 110°28'30"W 110°28'0"W 110°27'30"W 110°27'0"W 110°26'30"W 110°26'0"W 110°25'30"W 110°25'0"W 110°24'30"W 110°24'0"W

ALUM INFRARED MAP

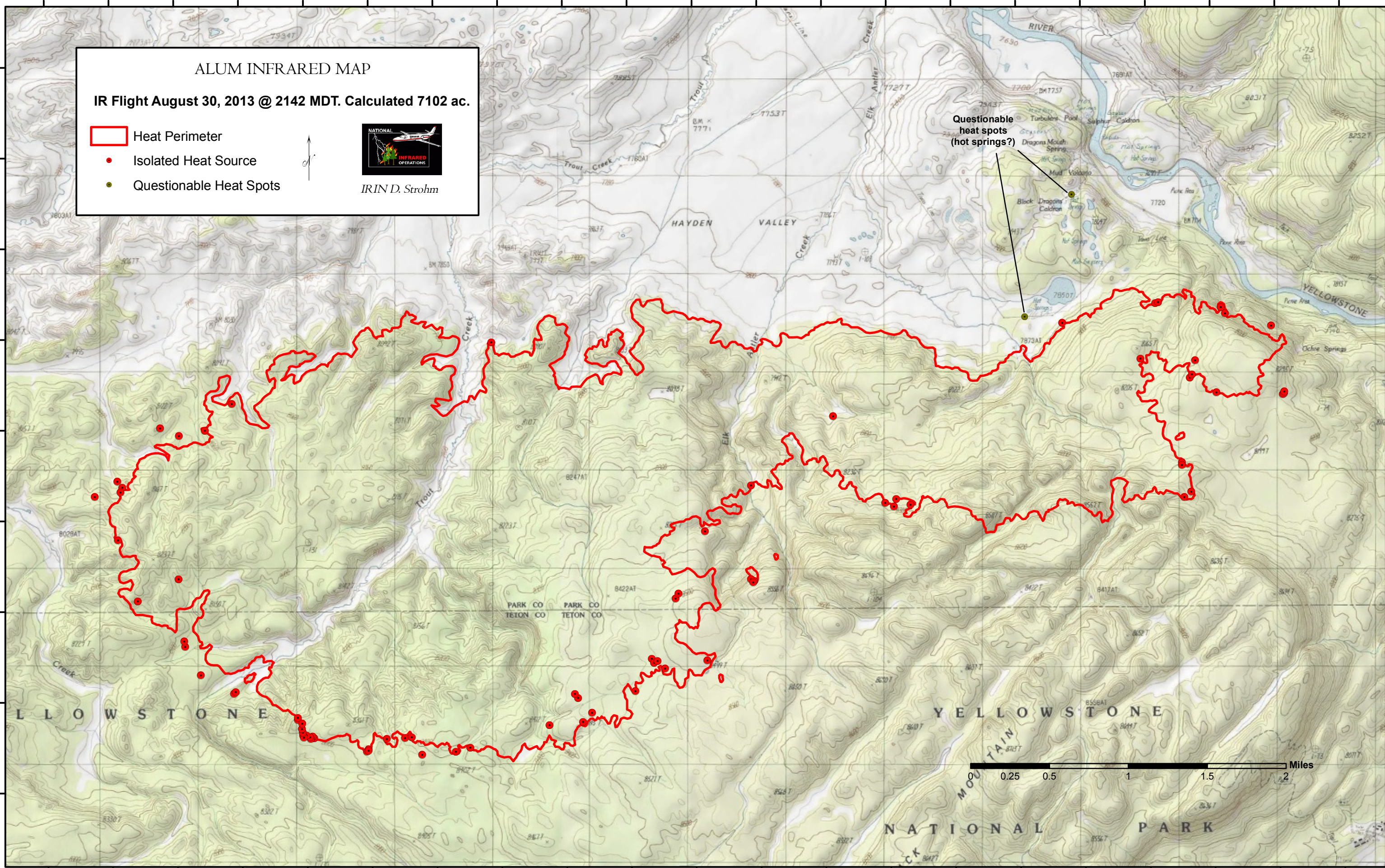
IR Flight August 30, 2013 @ 2142 MDT. Calculated 7102 ac.

- Heat Perimeter
- Isolated Heat Source
- Questionable Heat Spots



IRIN D. Strohm

Questionable heat spots (hot springs?)



110°34'0"W 110°33'30"W 110°33'0"W 110°32'30"W 110°32'0"W 110°31'30"W 110°31'0"W 110°30'30"W 110°30'0"W 110°29'30"W 110°29'0"W 110°28'30"W 110°28'0"W 110°27'30"W 110°27'0"W 110°26'30"W 110°26'0"W 110°25'30"W 110°25'0"W 110°24'30"W 110°24'0"W

44°38'0"N
44°37'30"N
44°37'0"N
44°36'30"N
44°36'0"N
44°35'30"N
44°35'0"N
44°34'30"N
44°34'0"N