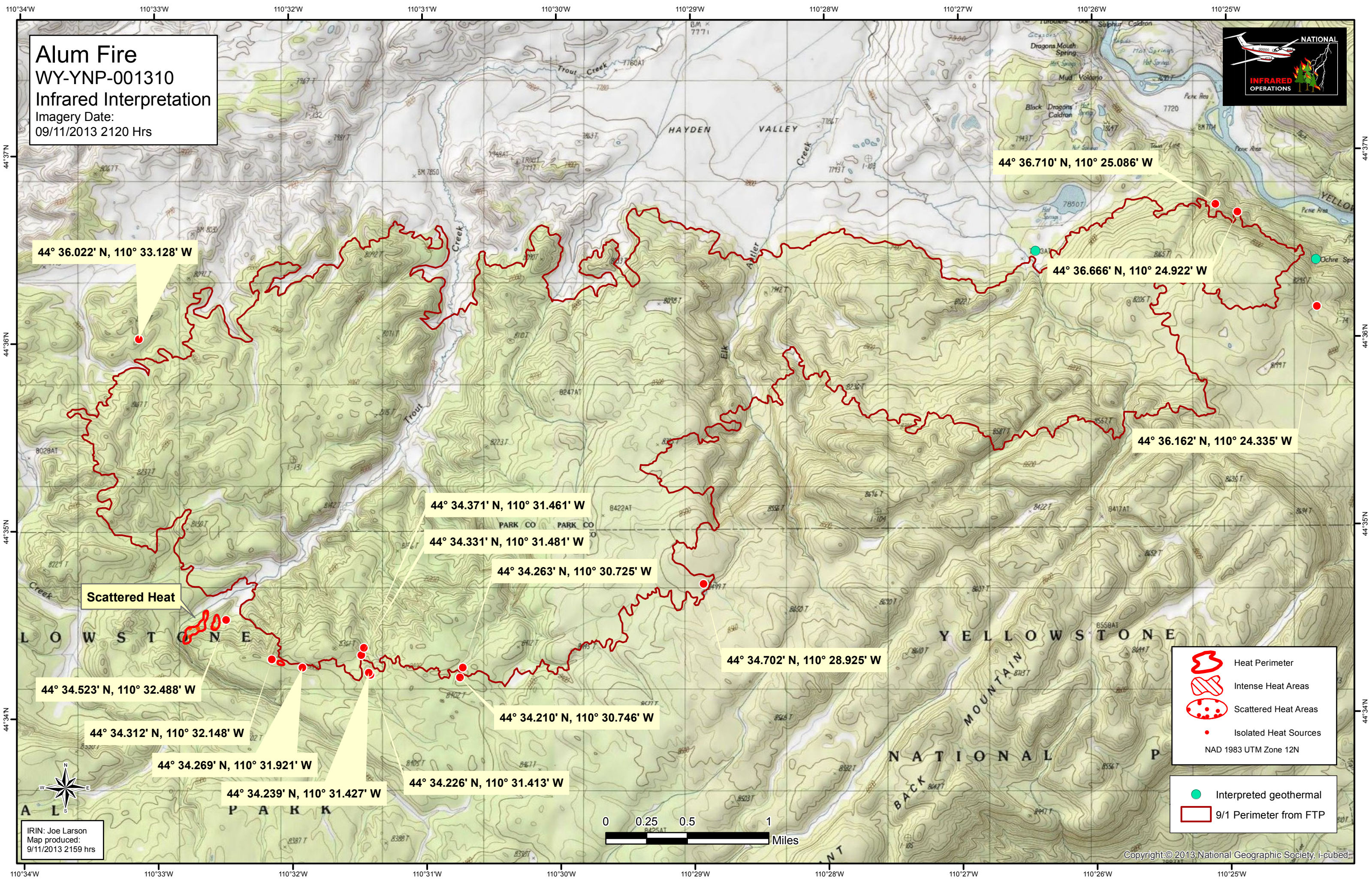
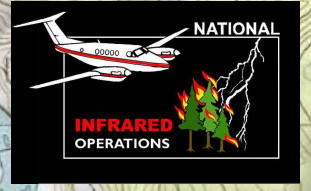


Alum Fire
 WY-YNP-001310
 Infrared Interpretation
 Imagery Date:
 09/11/2013 2120 Hrs



44° 36.022' N, 110° 33.128' W

44° 36.710' N, 110° 25.086' W

44° 36.666' N, 110° 24.922' W

44° 36.162' N, 110° 24.335' W

44° 34.371' N, 110° 31.461' W

44° 34.331' N, 110° 31.481' W

44° 34.263' N, 110° 30.725' W

44° 34.702' N, 110° 28.925' W

44° 34.523' N, 110° 32.488' W

44° 34.210' N, 110° 30.746' W




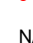
44° 34.312' N, 110° 32.148' W



44° 34.269' N, 110° 31.921' W

44° 34.226' N, 110° 31.413' W

44° 34.239' N, 110° 31.427' W

Scattered Heat

-  Heat Perimeter
 -  Intense Heat Areas
 -  Scattered Heat Areas
 -  Isolated Heat Sources
- NAD 1983 UTM Zone 12N

-  Interpreted geothermal
-  9/1 Perimeter from FTP

IRIN: Joe Larson
 Map produced:
 9/11/2013 2159 hrs

