

California Point IR Map  
Map Date: 07/21/13  
Imagery Date: 07/20/13  
Imagery Time: 2359  
Interpreted Acres: 372  
NAD 83 - UTM Zone 11  
IRIN: Jim Grace/Tim Stauffer(t)

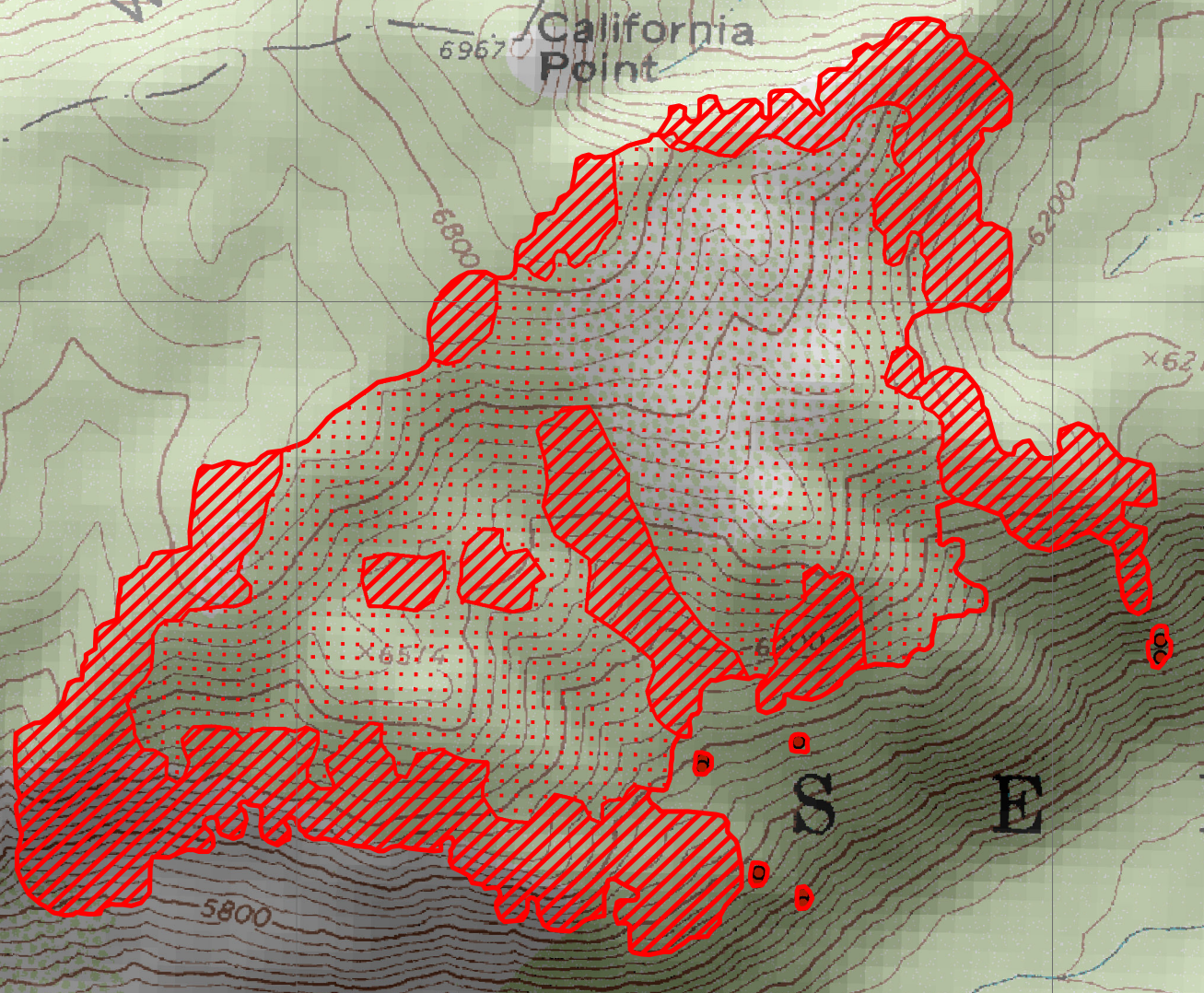


46°20'0"N

46°19'0"N

114°59'0"W

114°58'0"W



**Legend**

- HeatPerimeter
- IntenseHeat
- ScatteredHeat
- IsolatedHeat

