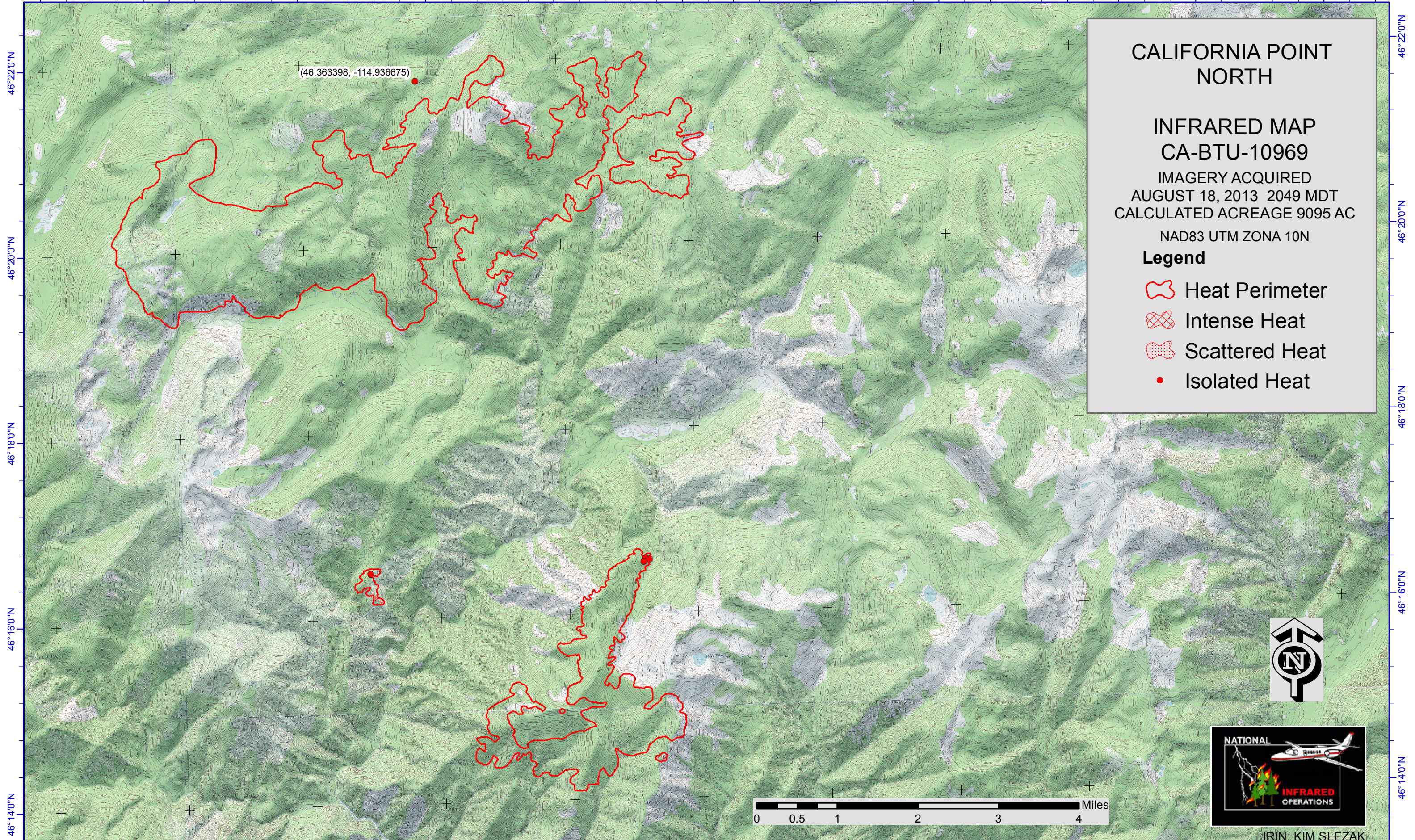


115°20'W 115°00'W 114°58'W 114°56'W 114°54'W 114°52'W 114°50'W 114°48'W 114°46'W 114°44'W 114°42'W







CALIFORNIA POINT NORTH

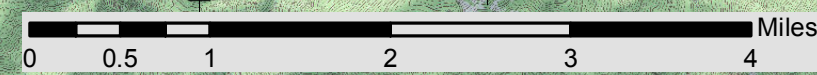
INFRARED MAP CA-BTU-10969

IMAGERY ACQUIRED
AUGUST 18, 2013 2049 MDT
CALCULATED ACREAGE 9095 AC

NAD83 UTM ZONA 10N

Legend

-  Heat Perimeter
-  Intense Heat
-  Scattered Heat
-  Isolated Heat



IRIN: KIM SLEZAK

115°20'W 115°00'W 114°58'W 114°56'W 114°54'W 114°52'W 114°50'W 114°48'W 114°46'W 114°44'W 114°42'W

46°22'0"N
46°20'0"N
46°18'0"N
46°16'0"N
46°14'0"N

46°22'0"N
46°20'0"N
46°18'0"N
46°16'0"N
46°14'0"N