





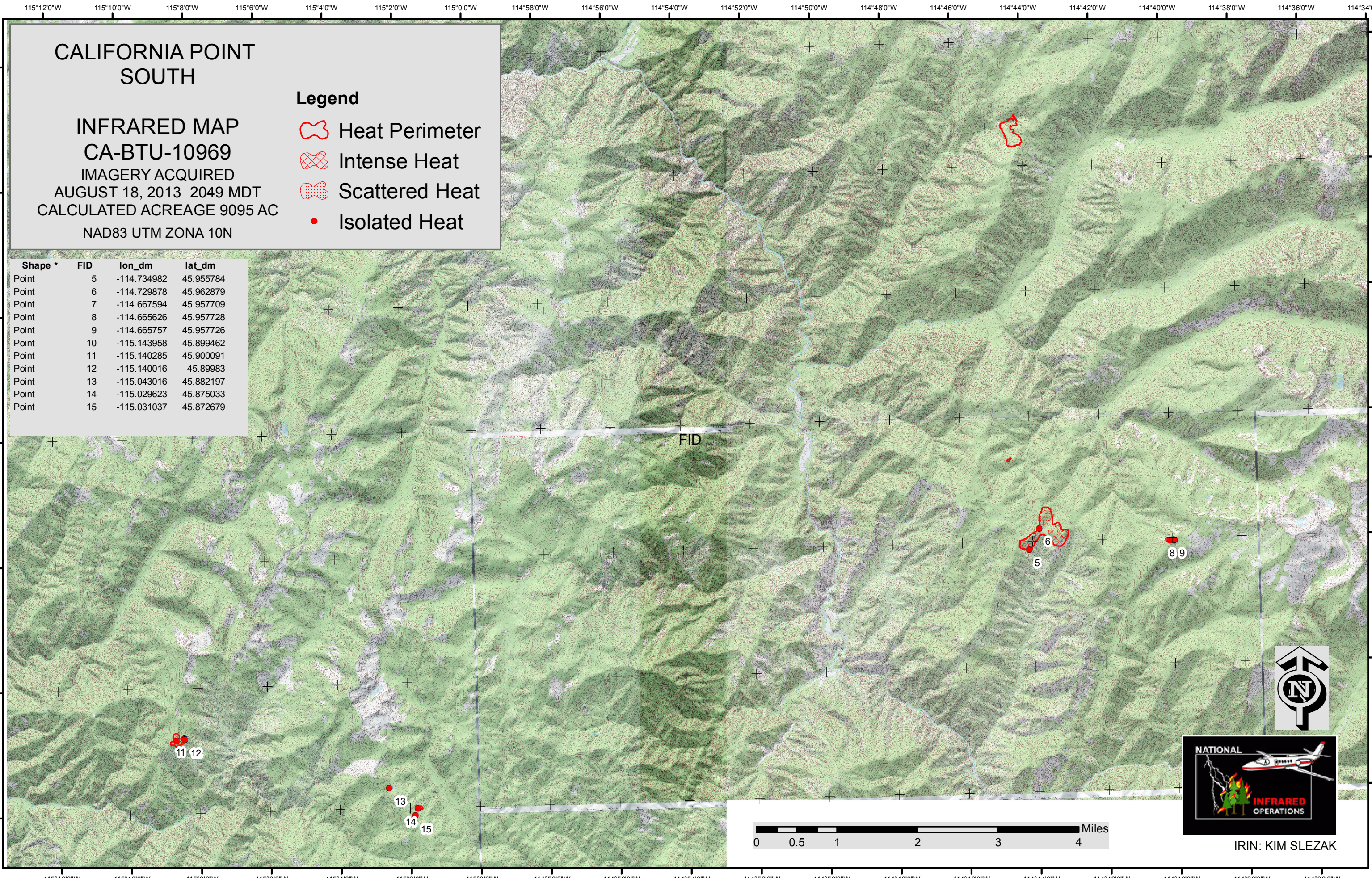
CALIFORNIA POINT SOUTH

INFRARED MAP
CA-BTU-10969
 IMAGERY ACQUIRED
 AUGUST 18, 2013 2049 MDT
 CALCULATED ACREAGE 9095 AC
 NAD83 UTM ZONA 10N

Legend

-  Heat Perimeter
-  Intense Heat
-  Scattered Heat
-  Isolated Heat

Shape *	FID	lon_dm	lat_dm
Point	5	-114.734982	45.955784
Point	6	-114.729878	45.962879
Point	7	-114.667594	45.957709
Point	8	-114.665626	45.957728
Point	9	-114.665757	45.957726
Point	10	-115.143958	45.899462
Point	11	-115.140285	45.900091
Point	12	-115.140016	45.89983
Point	13	-115.043016	45.882197
Point	14	-115.029623	45.875033
Point	15	-115.031037	45.872679



IRIN: KIM SLEZAK