
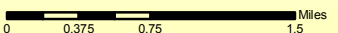
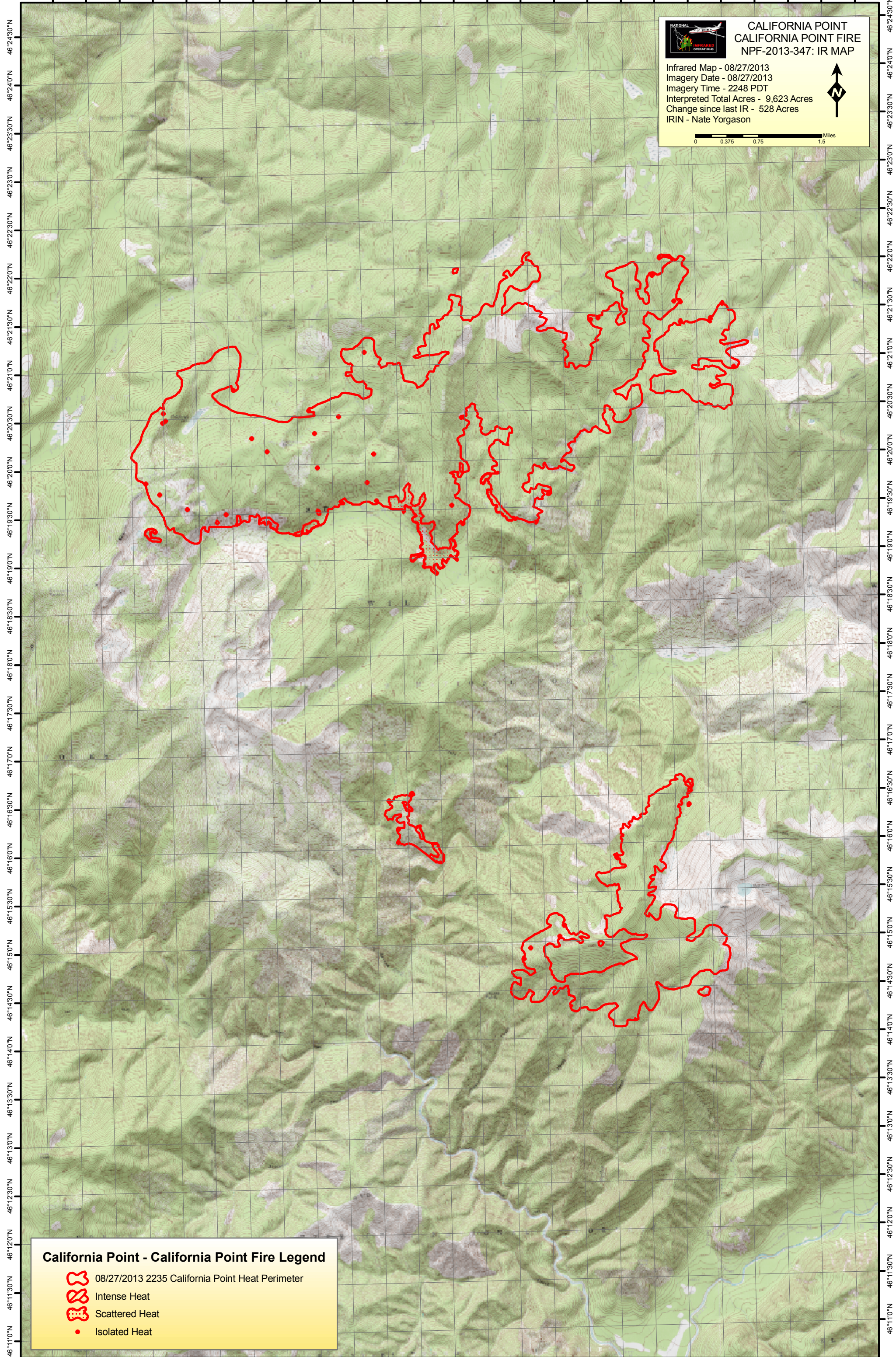


115°20'W 115°10'W 115°00'W 114°59'0"W 114°58'0"W 114°57'0"W 114°56'0"W 114°55'0"W 114°54'0"W 114°53'0"W 114°52'0"W 114°51'0"W 114°50'0"W

**CALIFORNIA POINT
CALIFORNIA POINT FIRE
NPF-2013-347: IR MAP**

Infrared Map - 08/27/2013
 Imagery Date - 08/27/2013
 Imagery Time - 2248 PDT
 Interpreted Total Acres - 9,623 Acres
 Change since last IR - 528 Acres
 IRIN - Nate Yorgason

California Point - California Point Fire Legend

-  08/27/2013 2235 California Point Heat Perimeter
-  Intense Heat
-  Scattered Heat
-  Isolated Heat

115°23'0"W 115°13'0"W 115°03'0"W 114°59'30"W 114°58'30"W 114°57'30"W 114°56'30"W 114°55'30"W 114°54'30"W 114°53'30"W 114°52'30"W 114°51'30"W 114°50'30"W