

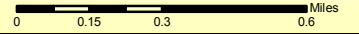
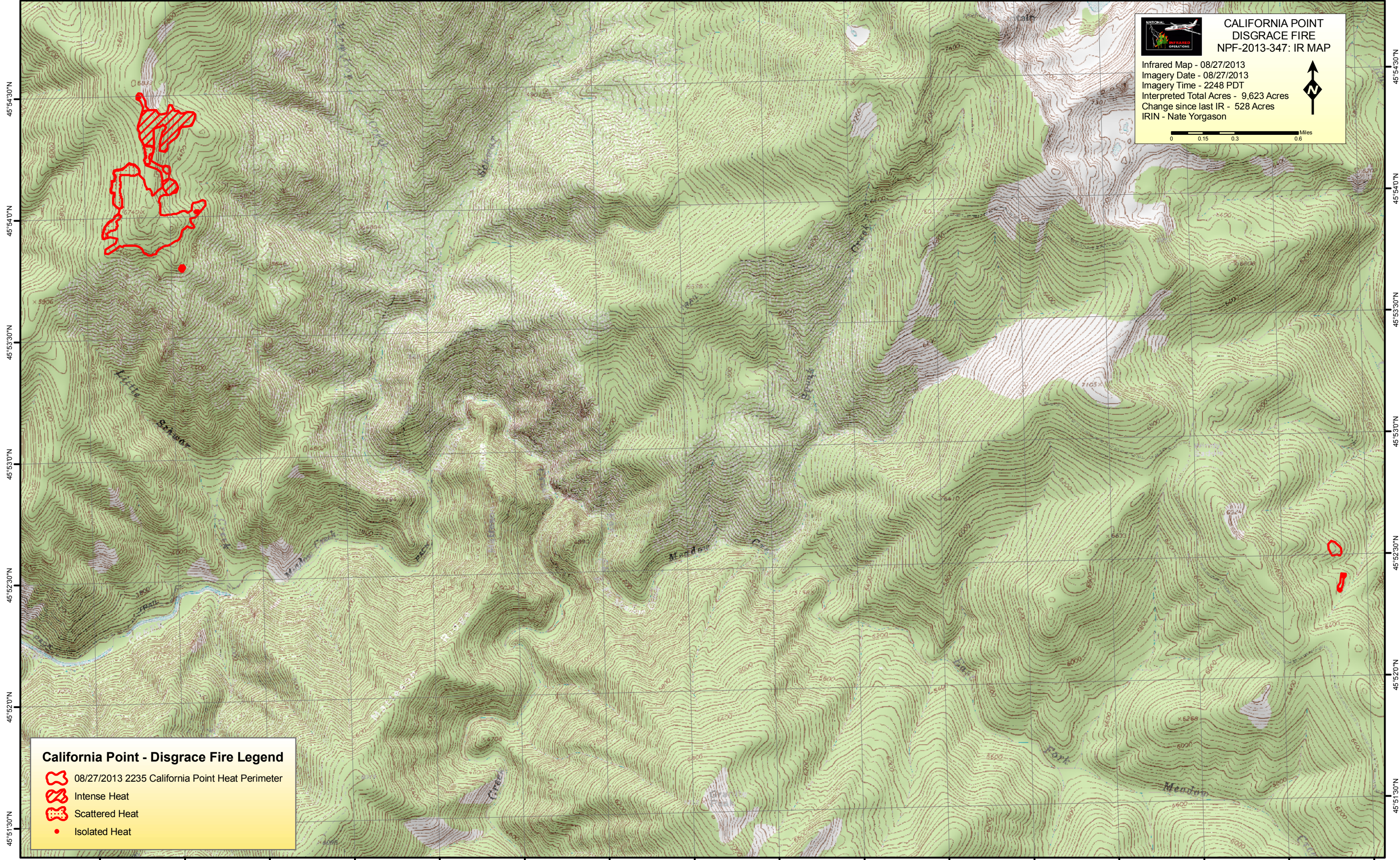


115°9'0"W 115°8'30"W 115°8'0"W 115°7'30"W 115°7'0"W 115°6'30"W 115°6'0"W 115°5'30"W 115°5'0"W 115°4'30"W 115°4'0"W 115°3'30"W 115°3'0"W 115°2'30"W 115°2'0"W 115°1'30"W




**CALIFORNIA POINT
DISGRACE FIRE
NPF-2013-347: IR MAP**

Infrared Map - 08/27/2013
 Imagery Date - 08/27/2013
 Imagery Time - 2248 PDT
 Interpreted Total Acres - 9,623 Acres
 Change since last IR - 528 Acres
 IRIN - Nate Yorgason

California Point - Disgrace Fire Legend

-  08/27/2013 2235 California Point Heat Perimeter
-  Intense Heat
-  Scattered Heat
-  Isolated Heat

115°9'0"W 115°8'30"W 115°8'0"W 115°7'30"W 115°7'0"W 115°6'30"W 115°6'0"W 115°5'30"W 115°5'0"W 115°4'30"W 115°4'0"W 115°3'30"W 115°3'0"W 115°2'30"W 115°2'0"W 115°1'30"W