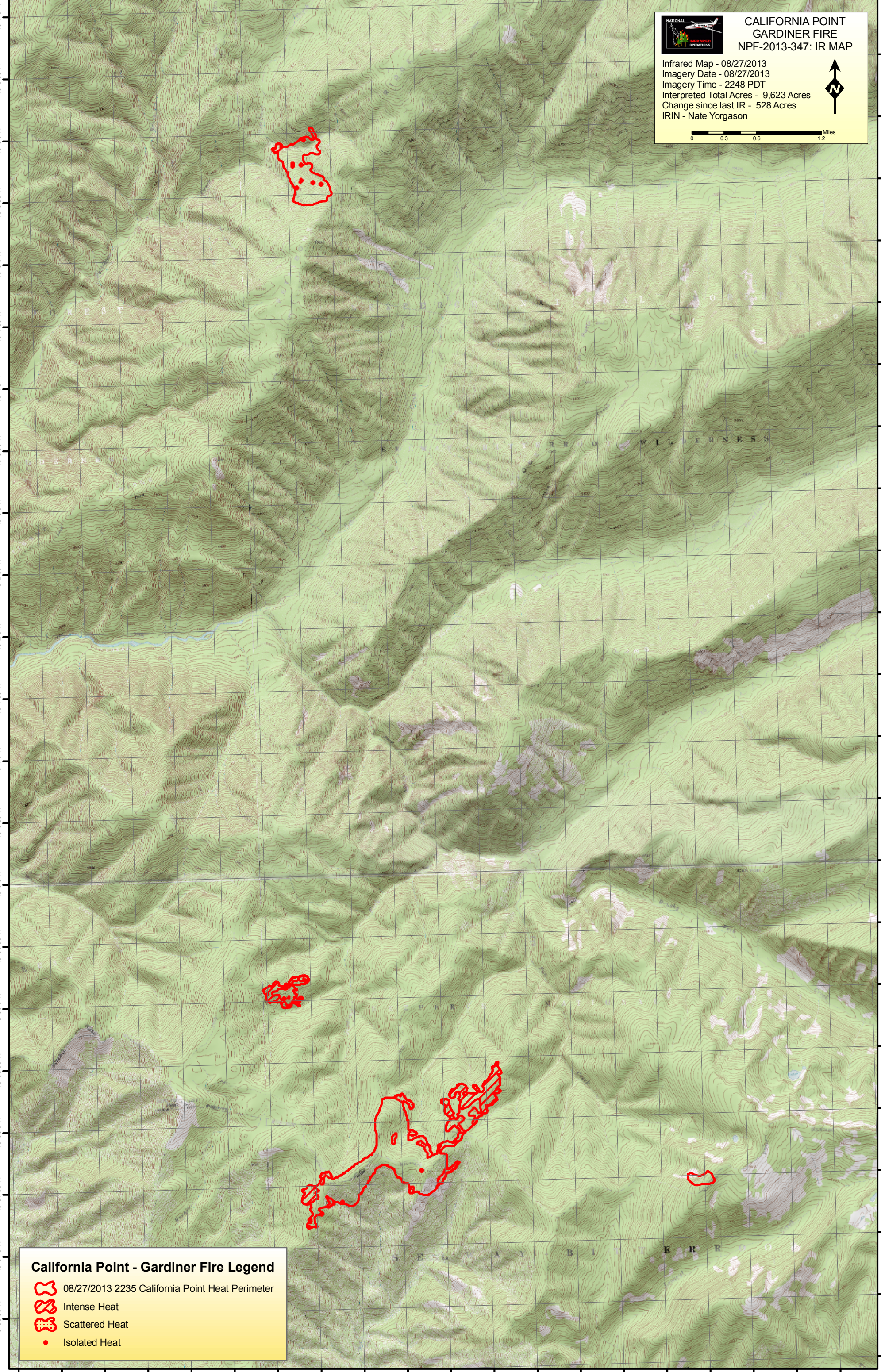


114°47'30"W 114°47'0"W 114°46'30"W 114°46'0"W 114°45'30"W 114°45'0"W 114°44'30"W 114°44'0"W 114°43'30"W 114°43'0"W 114°42'30"W 114°42'0"W 114°41'30"W 114°41'0"W 114°40'30"W 114°40'0"W 114°39'30"W 114°39'0"W 114°38'30"W 114°38'0"W



**CALIFORNIA POINT  
GARDINER FIRE  
NPF-2013-347: IR MAP**

Infrared Map - 08/27/2013  
 Imagery Date - 08/27/2013  
 Imagery Time - 2248 PDT  
 Interpreted Total Acres - 9,623 Acres  
 Change since last IR - 528 Acres  
 IRIN - Nate Yorgason

0 0.3 0.6 1.2 Miles

**California Point - Gardiner Fire Legend**

- 08/27/2013 2235 California Point Heat Perimeter
- Intense Heat
- Scattered Heat
- Isolated Heat

114°48'0"W 114°47'30"W 114°47'0"W 114°46'30"W 114°46'0"W 114°45'30"W 114°45'0"W 114°44'30"W 114°44'0"W 114°43'30"W 114°43'0"W 114°42'30"W 114°42'0"W 114°41'30"W 114°41'0"W 114°40'30"W 114°40'0"W 114°39'30"W 114°39'0"W 114°38'30"W 114°38'0"W