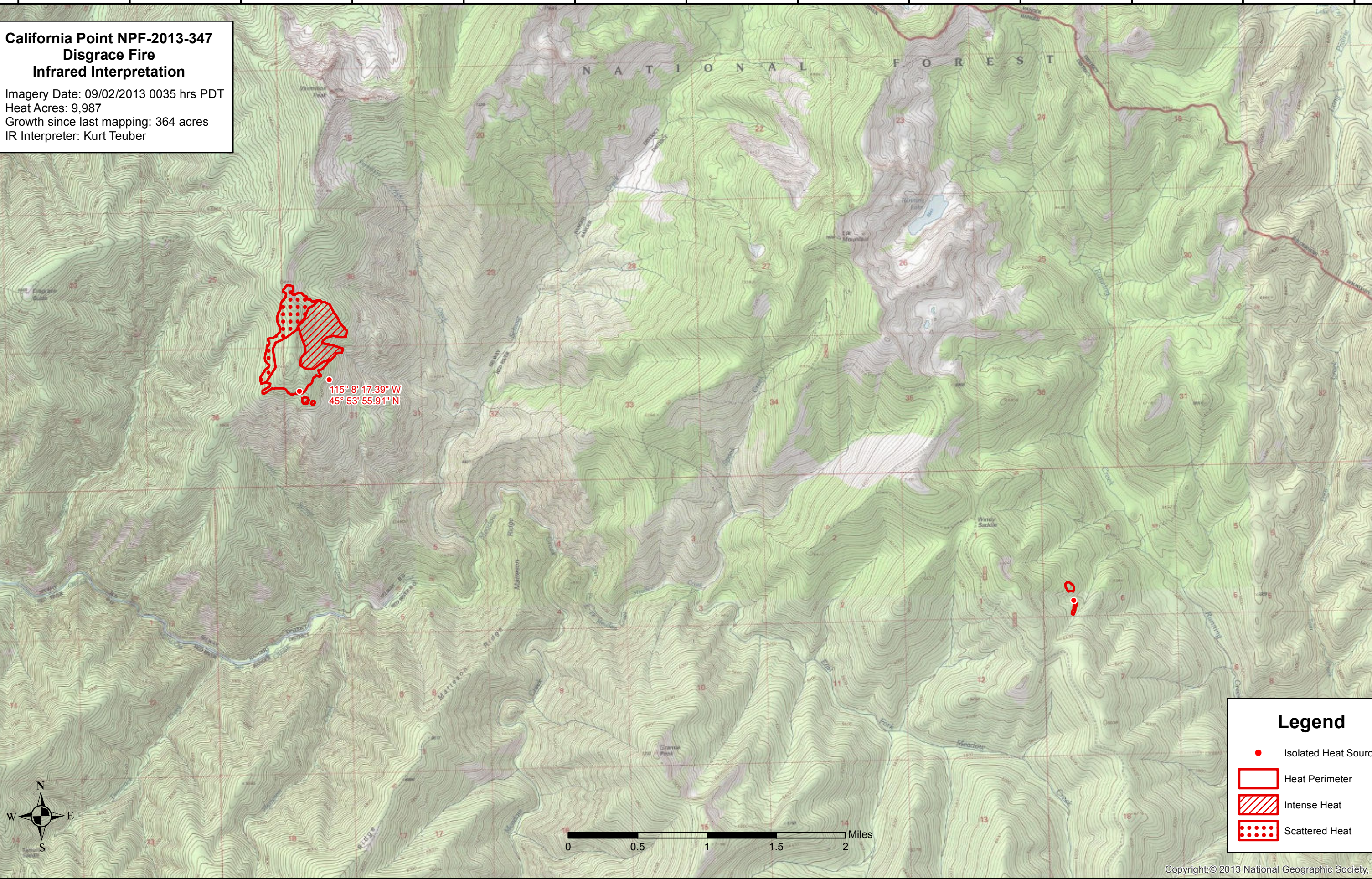


115°11'W 115°10'W 115°9'W 115°8'W 115°7'W 115°6'W 115°5'W 115°4'W 115°3'W 115°2'W 115°1'W 115°0'W 114°59'W



**California Point NPF-2013-347**  
**Disgrace Fire**  
**Infrared Interpretation**  
Imagery Date: 09/02/2013 0035 hrs PDT  
Heat Acres: 9,987  
Growth since last mapping: 364 acres  
IR Interpreter: Kurt Teuber

115° 8' 17.39" W  
45° 53' 55.91" N

**Legend**

- Isolated Heat Sources
- Heat Perimeter
- / / / / / Intense Heat
- ● ● ● ● Scattered Heat

0 0.5 1 1.5 2 Miles



115°11'W 115°10'W 115°9'W 115°8'W 115°7'W 115°6'W 115°5'W 115°4'W 115°3'W 115°2'W 115°1'W 115°0'W 114°59'W