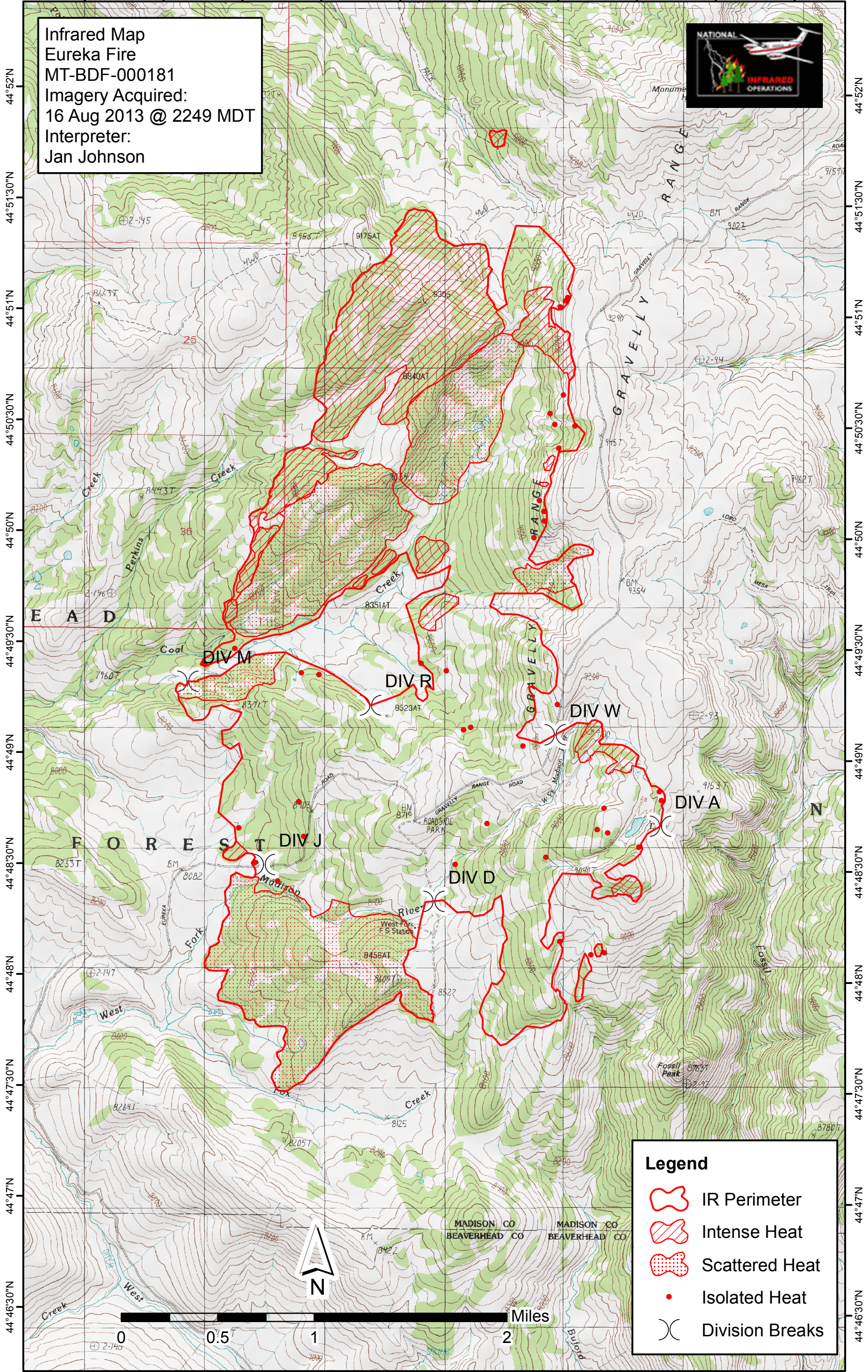
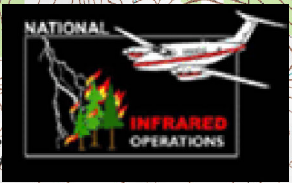







111°55'30"W 111°55'W 111°54'30"W 111°54'W 111°53'30"W 111°53'W 111°52'30"W 111°52'W 111°51'30"W 111°51'W

Infrared Map
Eureka Fire
MT-BDF-000181
Imagery Acquired:
16 Aug 2013 @ 2249 MDT
Interpreter:
Jan Johnson



Legend

-  IR Perimeter
-  Intense Heat
-  Scattered Heat
-  Isolated Heat
-  Division Breaks

44°52'N 44°51'30"N 44°51'N 44°50'30"N 44°50'N 44°49'30"N 44°49'N 44°48'30"N 44°48'N 44°47'30"N 44°47'N 44°46'30"N 44°46'N

0 0.5 1 2 Miles

111°55'30"W 111°55'W 111°54'30"W 111°54'W 111°53'30"W 111°53'W 111°52'30"W 111°52'W 111°51'30"W 111°51'W