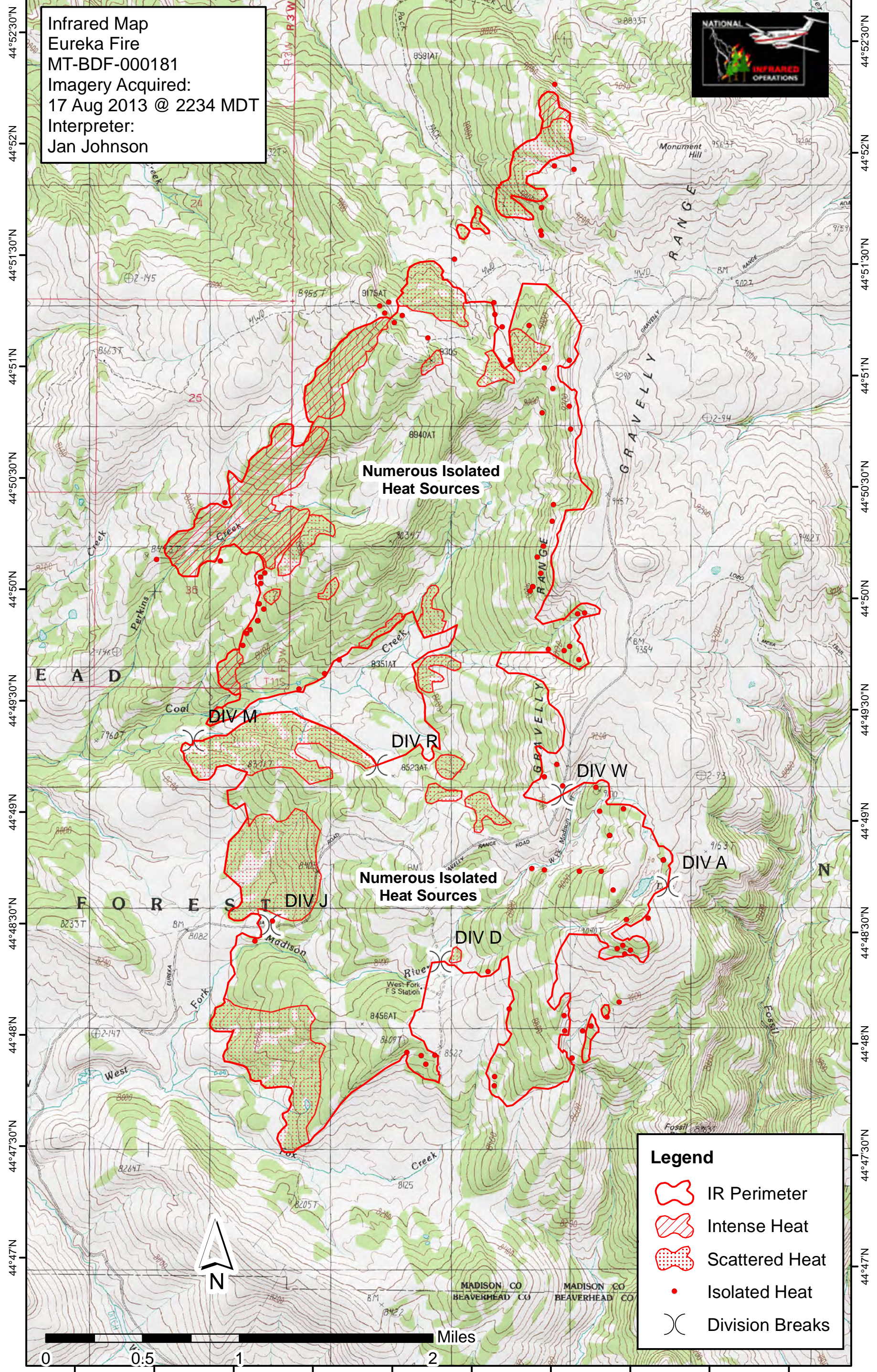
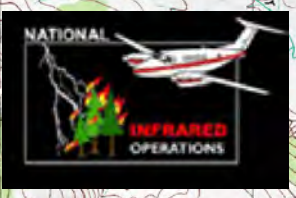


111°55'30"W 111°55'W 111°54'30"W 111°54'W 111°53'30"W 111°53'W 111°52'30"W 111°52'W 111°51'30"W 111°51'W




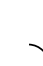

Infrared Map
Eureka Fire
MT-BDF-000181
Imagery Acquired:
17 Aug 2013 @ 2234 MDT
Interpreter:
Jan Johnson



Numerous Isolated Heat Sources

Numerous Isolated Heat Sources

Legend

-  IR Perimeter
-  Intense Heat
-  Scattered Heat
-  Isolated Heat
-  Division Breaks



111°55'30"W 111°55'W 111°54'30"W 111°54'W 111°53'30"W 111°53'W 111°52'30"W 111°52'W 111°51'30"W 111°51'W

44°52'30"N
44°52'N
44°51'30"N
44°51'N
44°50'30"N
44°50'N
44°49'30"N
44°49'N
44°48'30"N
44°48'N
44°47'30"N
44°47'N

44°52'30"N
44°52'N
44°51'30"N
44°51'N
44°50'30"N
44°50'N
44°49'30"N
44°49'N
44°48'30"N
44°48'N
44°47'30"N
44°47'N