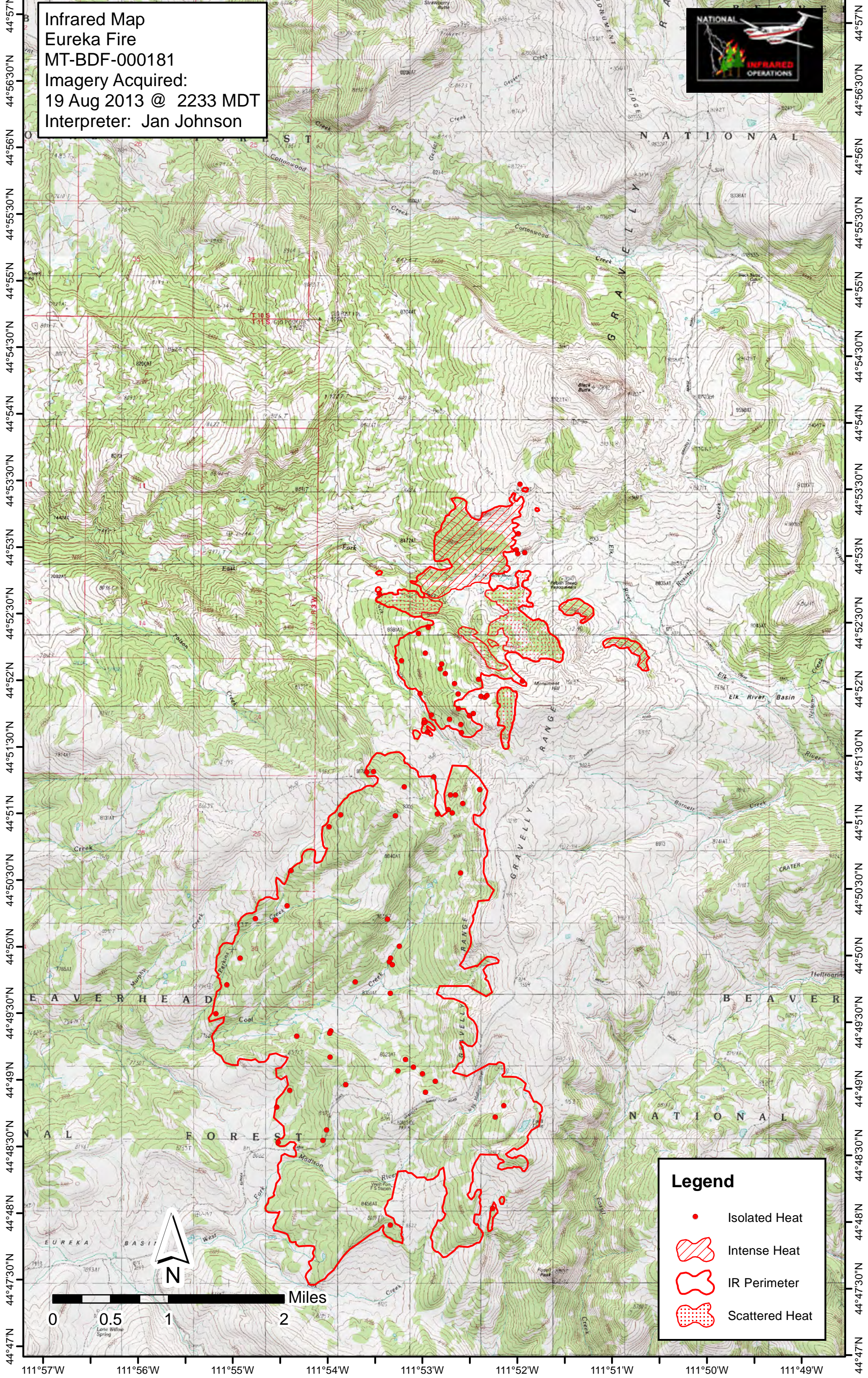
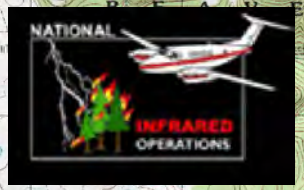






111°57'W 111°56'W 111°55'W 111°54'W 111°53'W 111°52'W 111°51'W 111°50'W 111°49'W

Infrared Map  
Eureka Fire  
MT-BDF-000181  
Imagery Acquired:  
19 Aug 2013 @ 2233 MDT  
Interpreter: Jan Johnson



**Legend**

-  Isolated Heat
-  Intense Heat
-  IR Perimeter
-  Scattered Heat



111°57'W 111°56'W 111°55'W 111°54'W 111°53'W 111°52'W 111°51'W 111°50'W 111°49'W