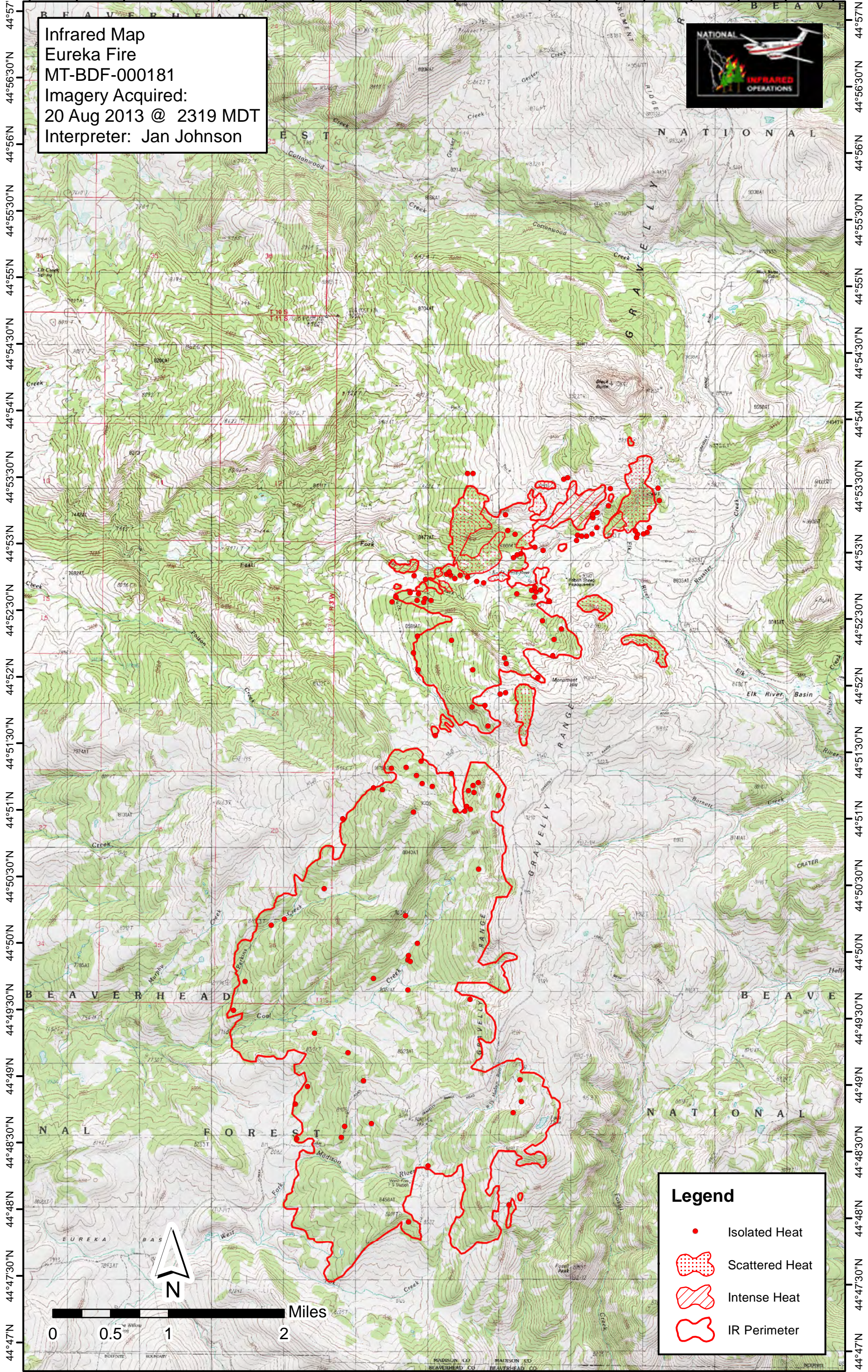
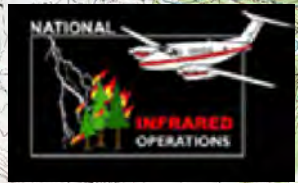






111°57'W 111°56'W 111°55'W 111°54'W 111°53'W 111°52'W 111°51'W 111°50'W 111°49'W

Infrared Map
Eureka Fire
MT-BDF-000181
Imagery Acquired:
20 Aug 2013 @ 2319 MDT
Interpreter: Jan Johnson



Legend

-  Isolated Heat
-  Scattered Heat
-  Intense Heat
-  IR Perimeter

111°57'W 111°56'W 111°55'W 111°54'W 111°53'W 111°52'W 111°51'W 111°50'W 111°49'W