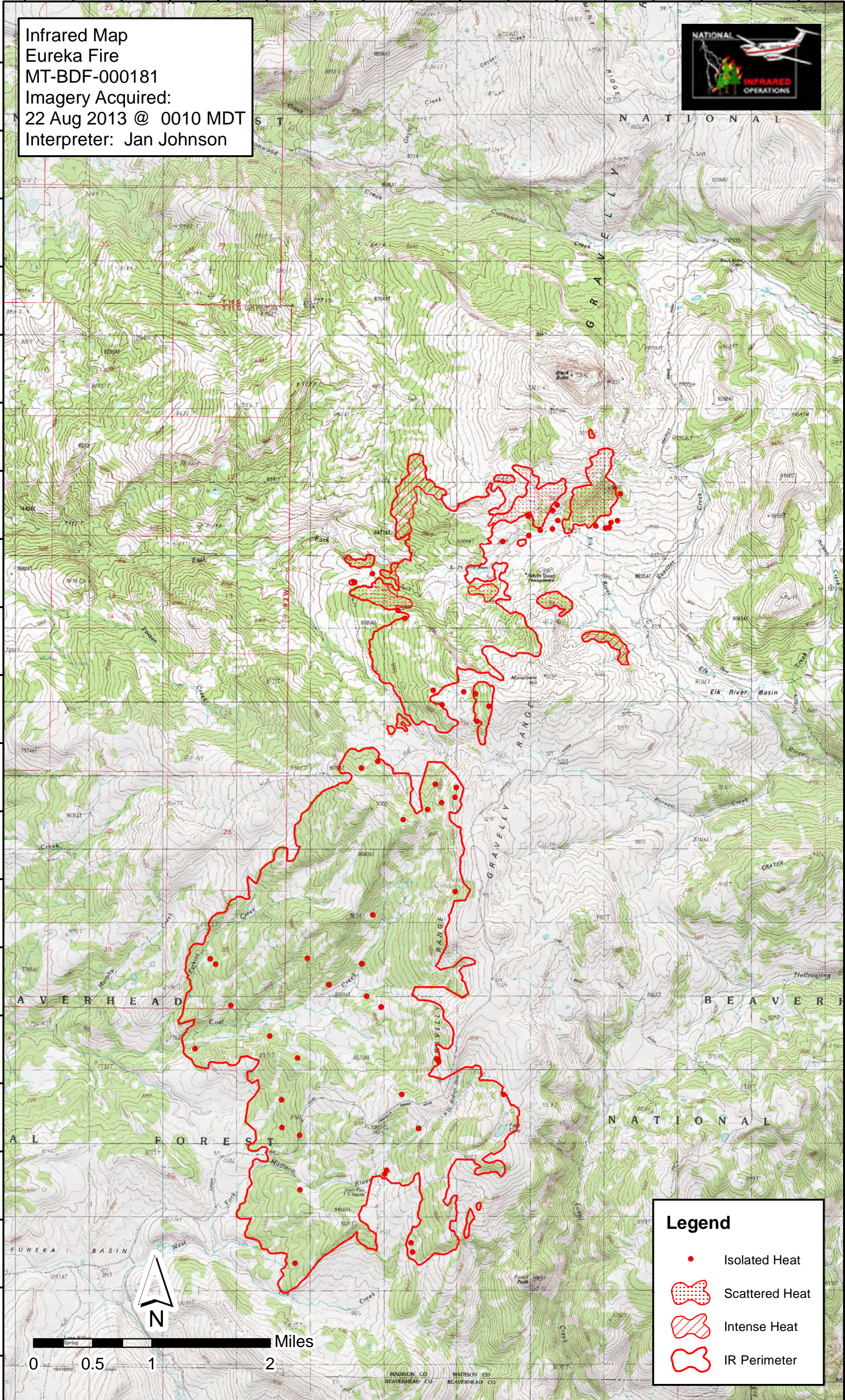


111°57'W 111°56'W 111°55'W 111°54'W 111°53'W 111°52'W 111°51'W 111°50'W 111°49'W

Infrared Map
Eureka Fire
MT-BDF-000181
Imagery Acquired:
22 Aug 2013 @ 0010 MDT
Interpreter: Jan Johnson



44°56'30"N
44°56'N
44°55'30"N
44°55'N
44°54'30"N
44°54'N
44°53'30"N
44°53'N
44°52'30"N
44°52'N
44°51'30"N
44°51'N
44°50'30"N
44°50'N
44°49'30"N
44°49'N
44°48'30"N
44°48'N
44°47'30"N
44°47'N

44°57'N
44°56'30"N
44°56'N
44°55'30"N
44°55'N
44°54'30"N
44°54'N
44°53'30"N
44°53'N
44°52'30"N
44°52'N
44°51'30"N
44°51'N
44°50'30"N
44°50'N
44°49'30"N
44°49'N
44°48'30"N
44°48'N
44°47'30"N
44°47'N



Legend

- Isolated Heat
- Scattered Heat
- Intense Heat
- IR Perimeter

111°57'W 111°56'W 111°55'W 111°54'W 111°53'W 111°52'W 111°51'W 111°50'W 111°49'W