

# GOLD PAN COMPLEX

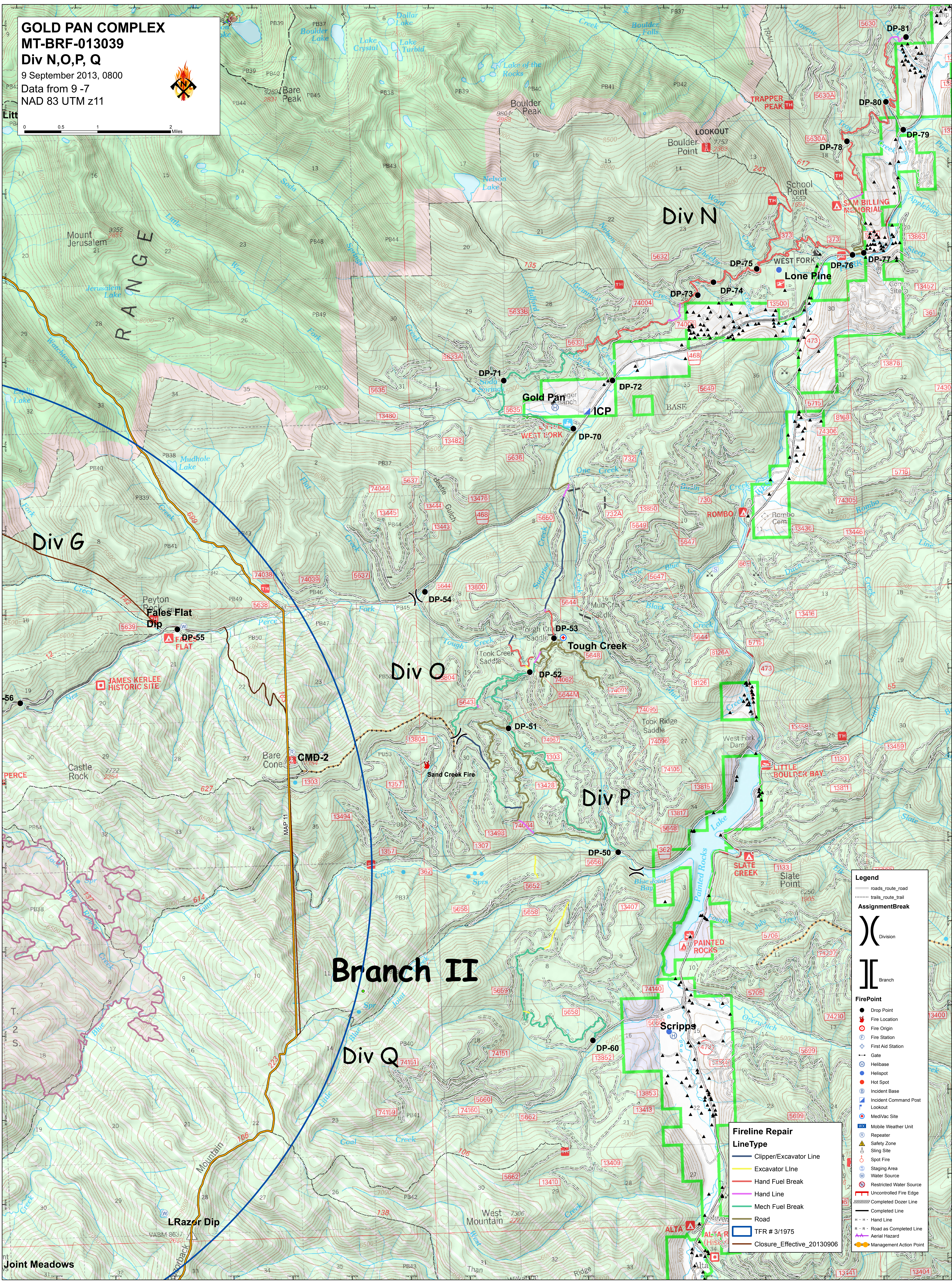
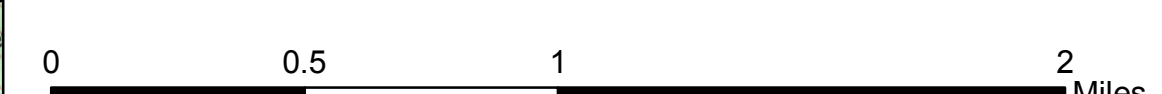
MT-BRF-013039

Div N,O,P, Q

9 September 2013, 0800

Data from 9 -7

NAD 83 UTM z11



**Legend**

- roads\_route\_road
- trails\_route\_trail
- AssignmentBreak**
- ( ) Division
- [ ] Branch
- FirePoint**
- Drop Point
- ▲ Fire Location
- ▲ Fire Origin
- Fire Station
- ▲ First Aid Station
- Gate
- Helibase
- Helispot
- Hot Spot
- ▲ Incident Base
- ▲ Incident Command Post
- ▲ Lookout
- Med/Vac Site
- Mobile Weather Unit
- Repeater
- ▲ Safety Zone
- ▲ Sling Site
- Spot Fire
- Staging Area
- Water Source
- Restricted Water Source
- ▲ Uncontrolled Fire Edge
- ▲ Completed Dozer Line
- ▲ Completed Line
- Hand Line
- Road as Completed Line
- ▲ Aerial Hazard
- Management Action Point

**Fireline Repair**

**LineType**

- Clipper/Excavator Line
- Excavator Line
- Hand Fuel Break
- Hand Line
- Mech Fuel Break
- Road
- TFR # 3/1975
- Closure\_Effective\_20130906