

113°47'0"W

113°46'30"W


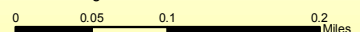
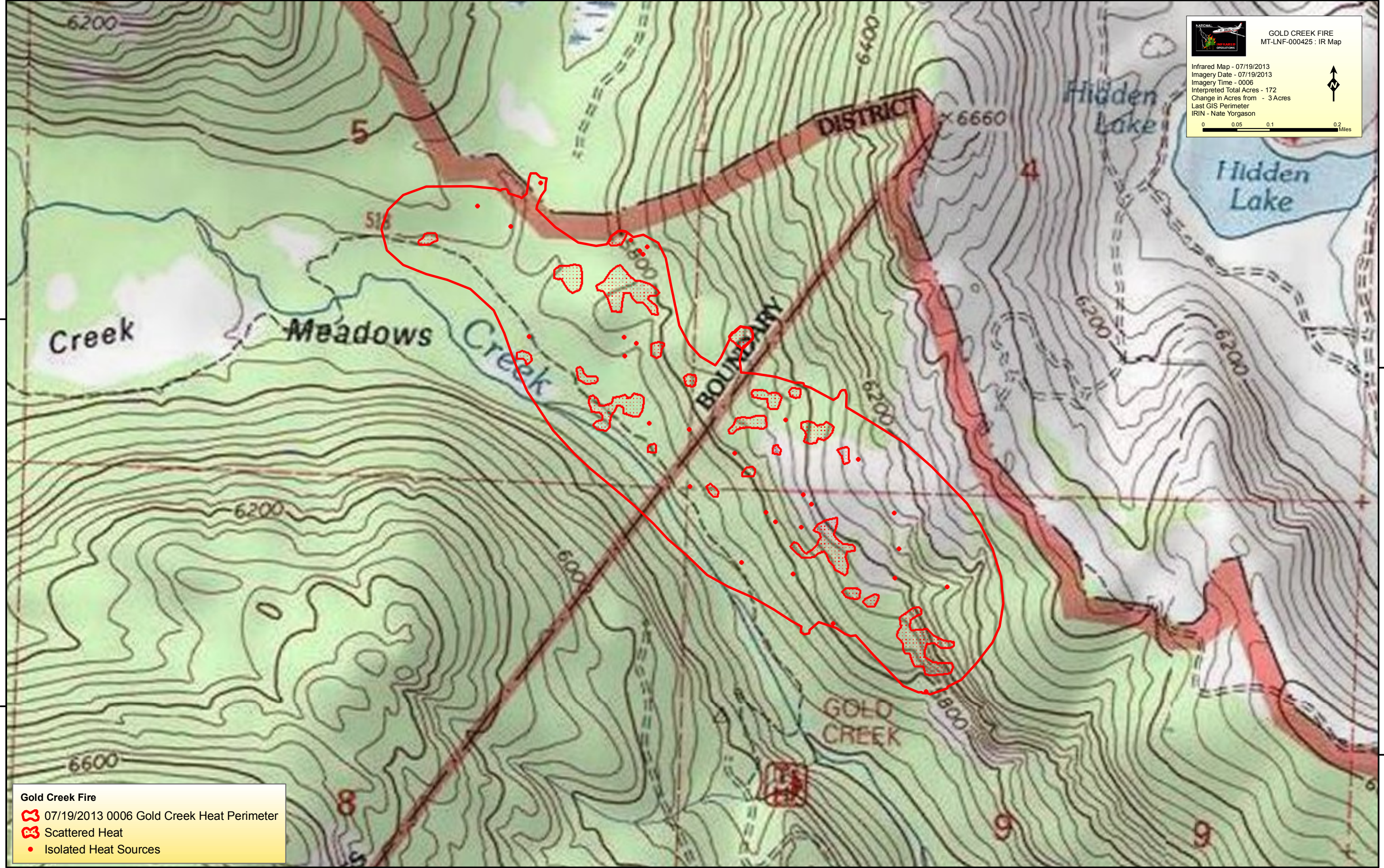
113°46'0"W

113°45'30"W

113°45'0"W

**GOLD CREEK FIRE**  
MT-LNF-000425 : IR Map

Infrared Map - 07/19/2013  
Imagery Date - 07/19/2013  
Imagery Time - 0006  
Interpreted Total Acres - 172  
Change in Acres from - 3 Acres  
Last GIS Perimeter  
IRIN - Nate Yorgason

47°50'N

47°43'0"N

47°50'N

47°43'0"N

113°47'0"W


113°46'30"W

113°46'0"W

113°45'30"W

113°45'0"W

**Gold Creek Fire**

-  07/19/2013 0006 Gold Creek Heat Perimeter
-  Scattered Heat
-  Isolated Heat Sources