

113°47'0"W

113°46'30"W

113°46'0"W

113°45'30"W

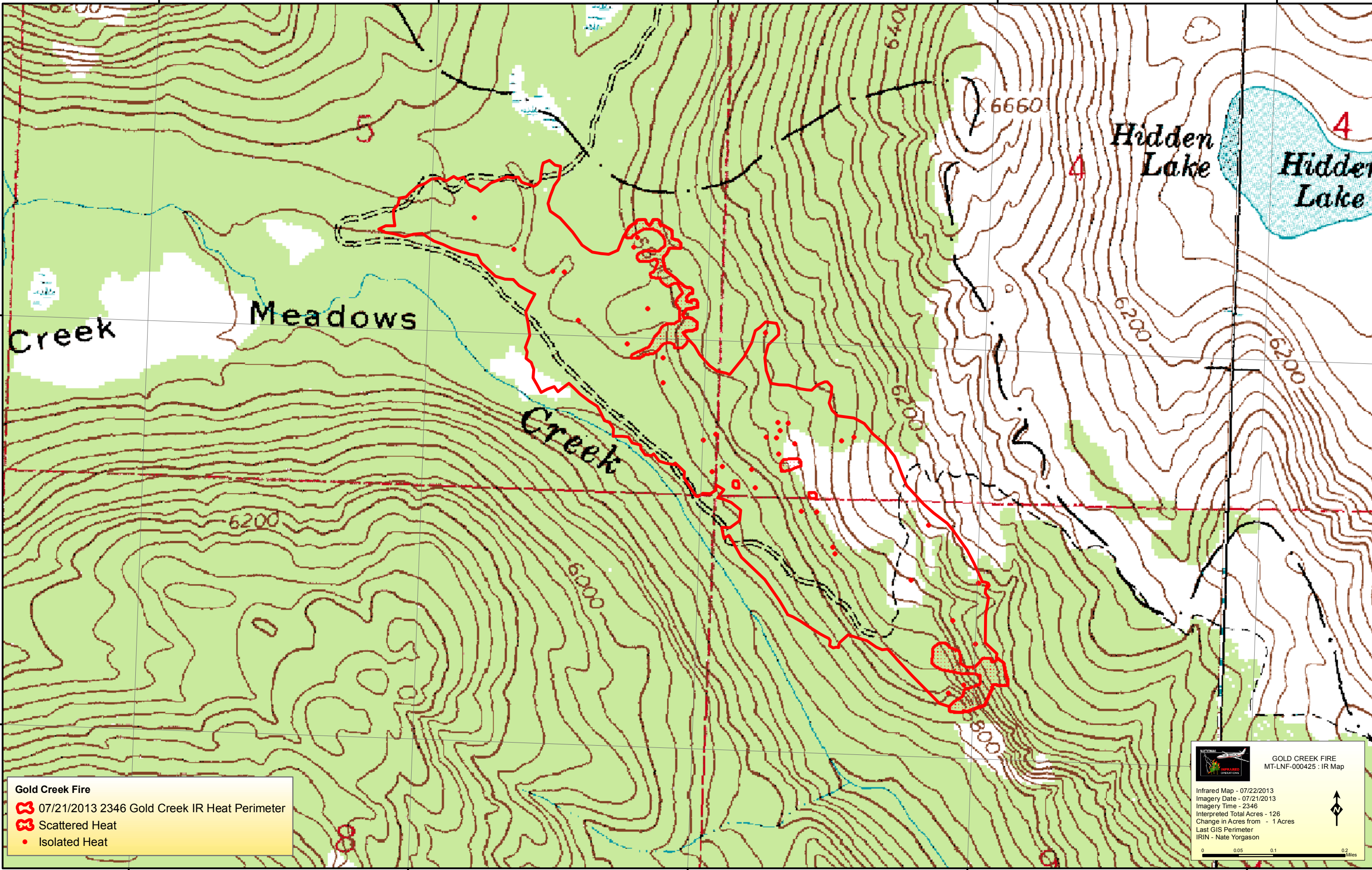
113°45'0"W

47°5'0"N




47°5'0"N

47°4'30"N

47°4'30"N


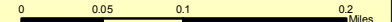


Gold Creek Fire

-  07/21/2013 2346 Gold Creek IR Heat Perimeter
-  Scattered Heat
-  Isolated Heat

GOLD CREEK FIRE
MT-LNF-000425 : IR Map

Infrared Map - 07/22/2013
 Imagery Date - 07/21/2013
 Imagery Time - 2346
 Interpreted Total Acres - 126
 Change in Acres from - 1 Acres
 Last GIS Perimeter
 IRIN - Nate Yorgason

113°47'0"W

113°46'30"W

113°46'0"W

113°45'30"W

113°45'0"W