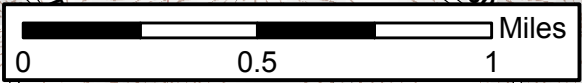


114°24'W 114°23'W 114°22'W 114°21'W 114°20'W

46°49'N 46°48'N 46°47'N 46°46'N 46°45'N 46°44'N

46°49'N 46°48'N 46°47'N 46°46'N 46°45'N 46°44'N

Lolo Creek Complex
MT-SWS-000068
IAP Map
August 28, 2013
Page 1



Branch I

Div A

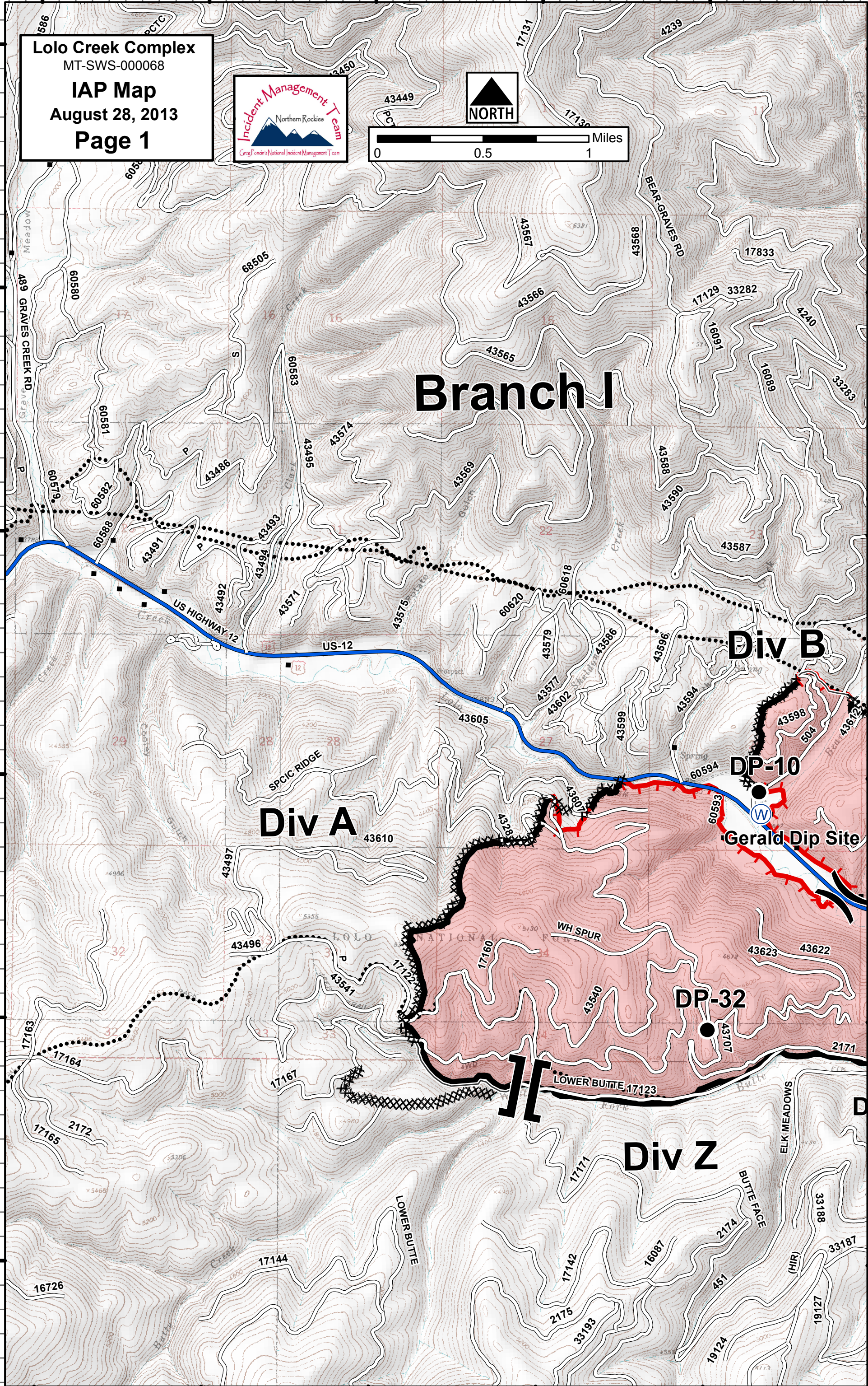
Div B

Div Z

DP-10

DP-32

Gerald Dip Site



114°24'W 114°23'W 114°22'W 114°21'W 114°20'W