

114°19'W

114°18'W

114°17'W

114°16'W

114°15'W

46°49'N

46°49'N

46°48'N

46°48'N

46°47'N

46°47'N

46°46'N

46°46'N

46°45'N

46°45'N

46°44'N

46°44'N

114°19'W

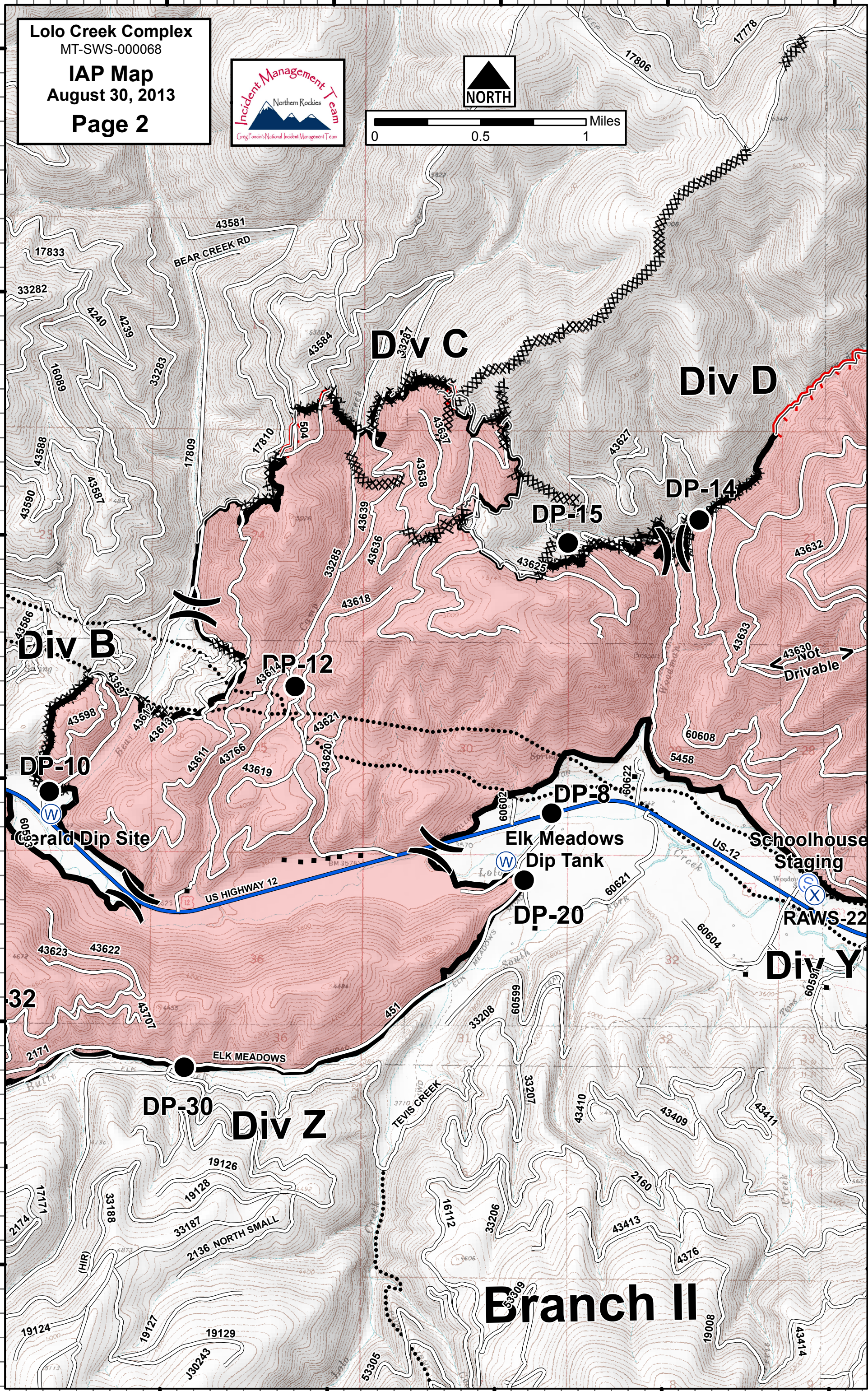
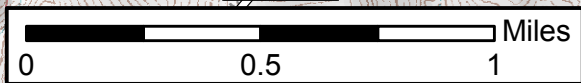
114°18'W

114°17'W

114°16'W

114°15'W

Lolo Creek Complex
 MT-SWS-000068
IAP Map
 August 30, 2013
Page 2



Div C

Div D

Div B

Div Y

Div Z

Branch II

DP-10

DP-12

DP-15

DP-14

DP-8

DP-20

DP-30

Gerald Dip Site

Elk Meadows Dip Tank

Schoolhouse Staging

RAWS-22

ELK MEADOWS

2136 NORTH SMALL

TEVIS CREEK

43630 Not Drivable

BEAR CREEK RD

US HIGHWAY 12

US-12

(HIR)

J30243

53305

53309

43414

32

32

32

32

32

32

32

32

19124

19127

19129

19126

19128

19128

19128

19128

19128

19128

19128

19128

19128

19128

19128

19128

19128

19128

19128

19128

19128

19128

19128

17171

17171

17171

17171

17171

17171

17171

17171

17171

17171

17171

17171

17171

17171

17171

17171

17171

17171

17171

17171

17171

17171

17171

17171

17171

17171

17171

17171

17171

17171

17171

17171

17171

17171

17171

17171

17171

17171

17171

17171

17171

17171

17171

17171

17171

17171