

114°19'W

114°18'W

114°17'W

114°16'W

114°15'W

46°49'N

46°49'N

46°48'N

46°48'N

46°47'N

46°47'N

46°46'N

46°46'N

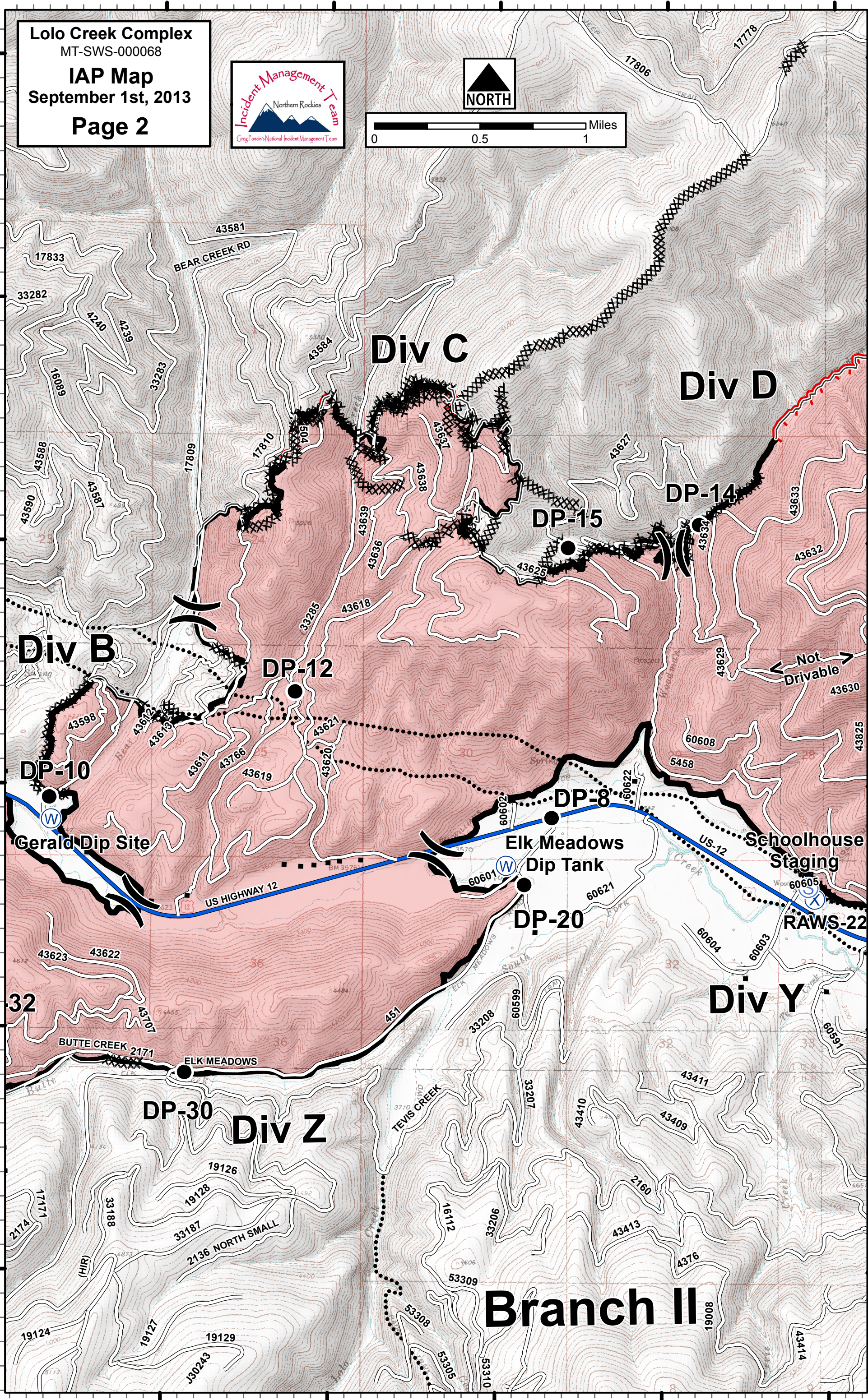
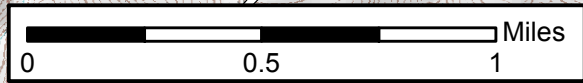
46°45'N

46°45'N

46°44'N

46°44'N

Lolo Creek Complex
 MT-SWS-000068
IAP Map
 September 1st, 2013
Page 2



Div C

Div D

Div B

DP-12

DP-15

DP-14

DP-10

Gerald Dip Site

US HIGHWAY 12

Elk Meadows Dip Tank

DP-8

Schoolhouse Staging

RAWS-22

DP-20

Div Y

DP-30

Div Z

Branch II

Not Drivable

114°19'W

114°18'W

114°17'W

114°16'W

114°15'W