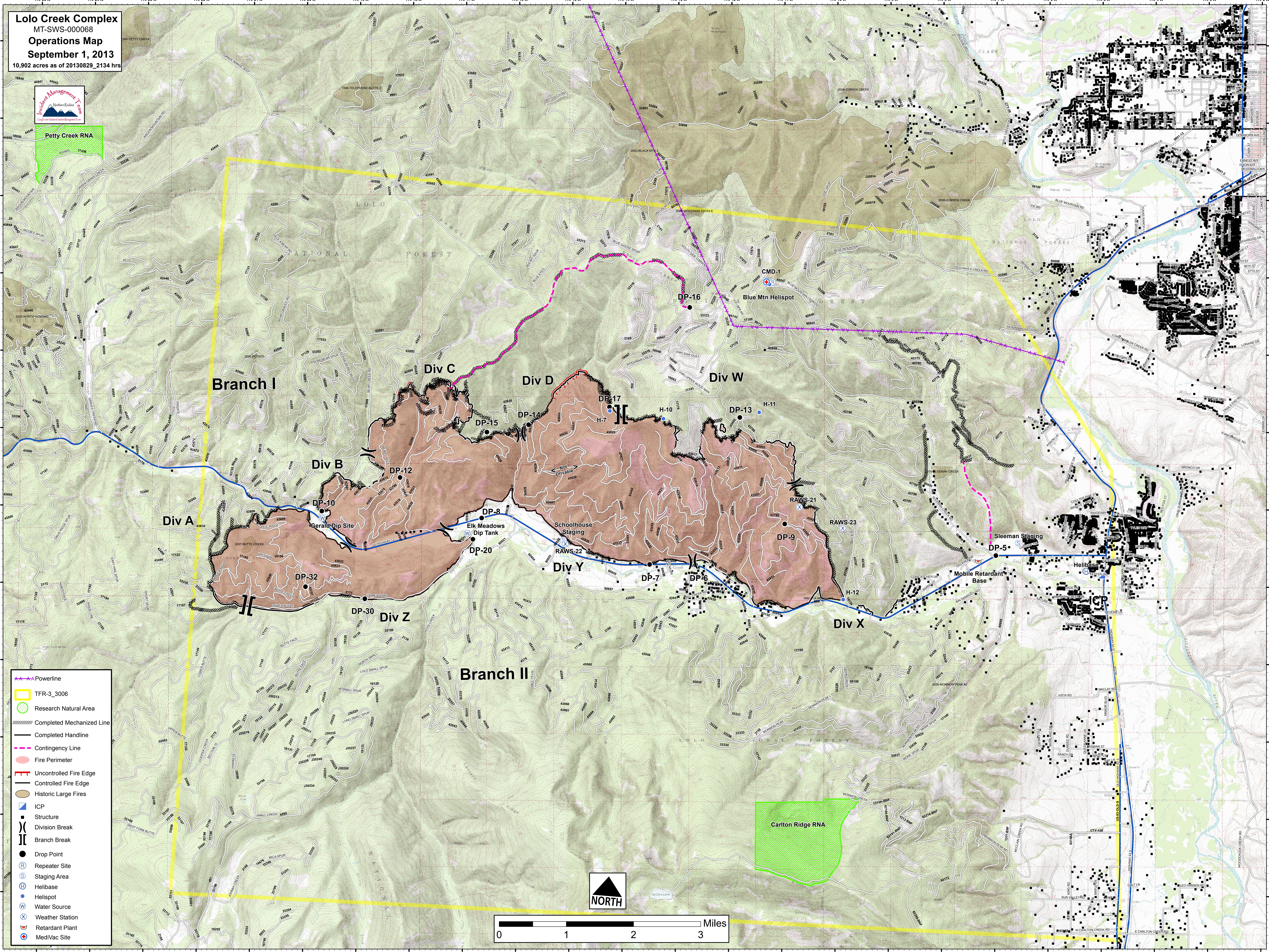


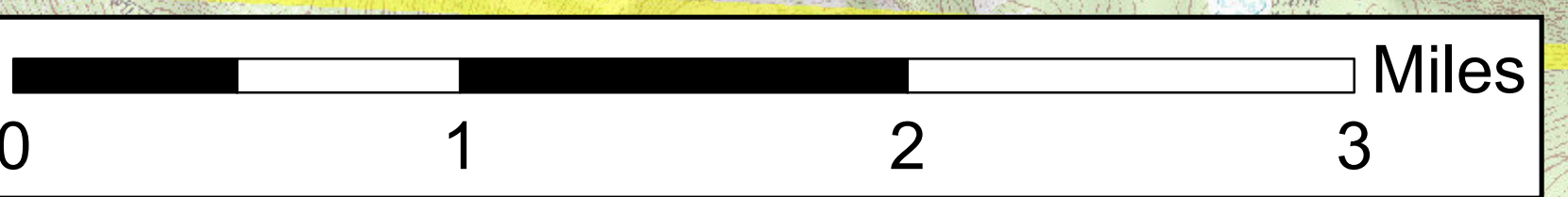
Lolo Creek Complex
 MT-SWS-000068
Operations Map
 September 1, 2013
 10,902 acres as of 20130829_2134 hrs



Petty Creek RNA



- Powerline
- TFR-3_3006
- Research Natural Area
- Completed Mechanized Line
- Completed Handline
- Contingency Line
- Fire Perimeter
- Uncontrolled Fire Edge
- Controlled Fire Edge
- Historic Large Fires
- ICP
- Structure
- Division Break
- Branch Break
- Drop Point
- Repeater Site
- Staging Area
- Helibase
- Helispot
- Water Source
- Weather Station
- Retardant Plant
- MediVac Site



Map labels include: Branch I, Branch II, Div A, Div B, Div C, Div D, Div E, Div F, Div G, Div H, Div I, Div J, Div K, Div L, Div M, Div N, Div O, Div P, Div Q, Div R, Div S, Div T, Div U, Div V, Div W, Div X, Div Y, Div Z, Petty Creek RNA, Carlton Ridge RNA, Blue Mtn Helispot, CMD-1, DP-5, DP-7, DP-8, DP-9, DP-10, DP-12, DP-13, DP-14, DP-15, DP-16, DP-17, DP-20, DP-30, DP-32, RAWS-21, RAWS-22, RAWS-23, Schoolhouse Staging, Elk Meadows Dip Tank, Gerald Dip Site, Sleeman Staging, Mobile Retardant Base, Helibase, CP, H-7, H-10, H-11, H-12, Not Drivable, and various road names like SLEEMAN CREEK RD, BLUE MOUNTAIN RD, and CARLTON CREEK RD.