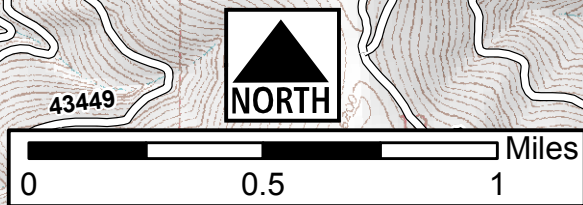


114°24'W 114°23'W 114°22'W 114°21'W 114°20'W

46°49'N  
46°48'N  
46°47'N  
46°46'N  
46°45'N  
46°44'N

46°49'N  
46°48'N  
46°47'N  
46°46'N  
46°45'N  
46°44'N

**Lolo Creek Complex**  
MT-SWS-000068  
**IAP Map**  
September 2nd, 2013  
**Page 1**



**Branch I**

**Div B**

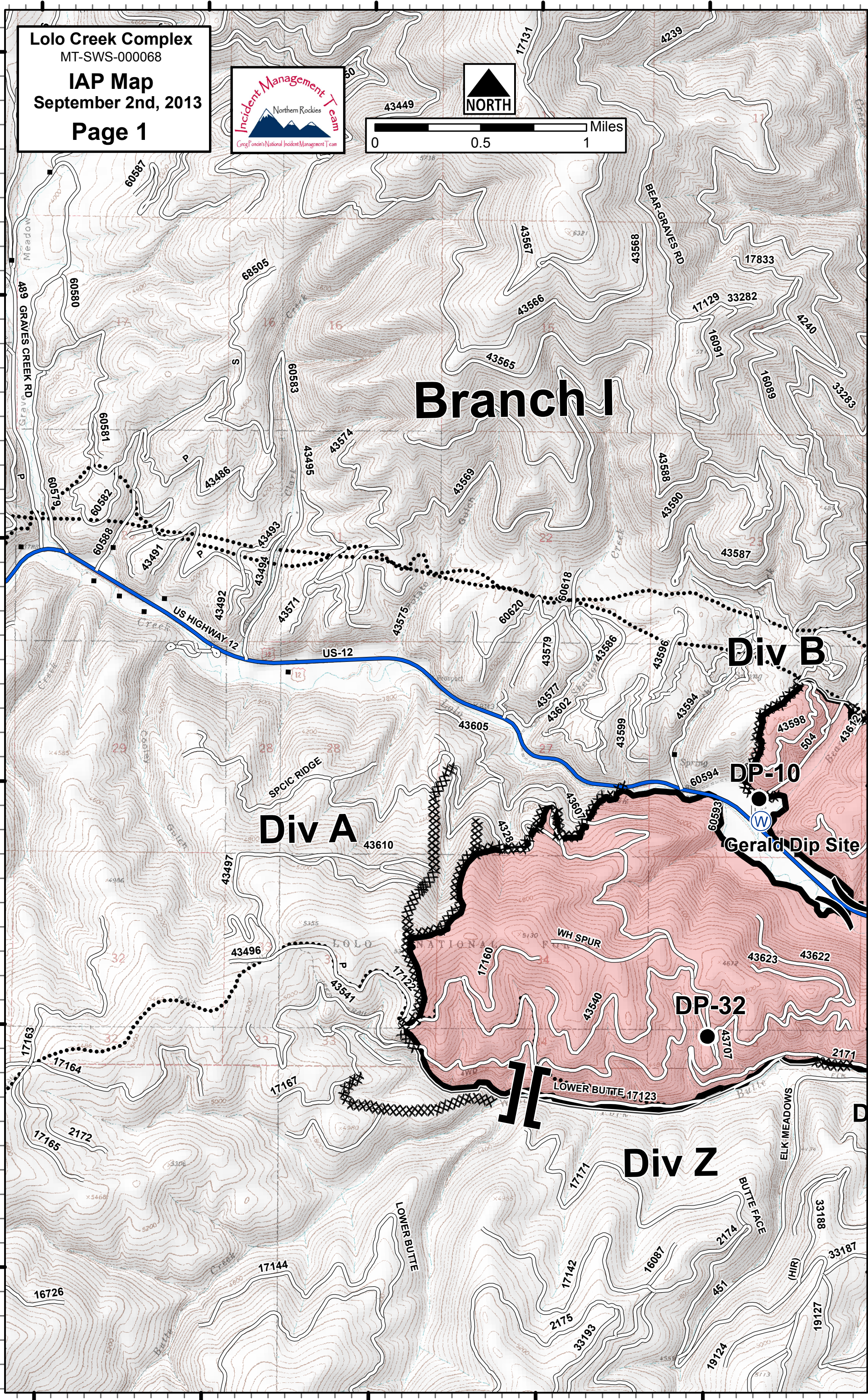
**Div A**

**DP-10**

**Gerald Dip Site**

**DP-32**

**Div Z**



114°24'W 114°23'W 114°22'W 114°21'W 114°20'W