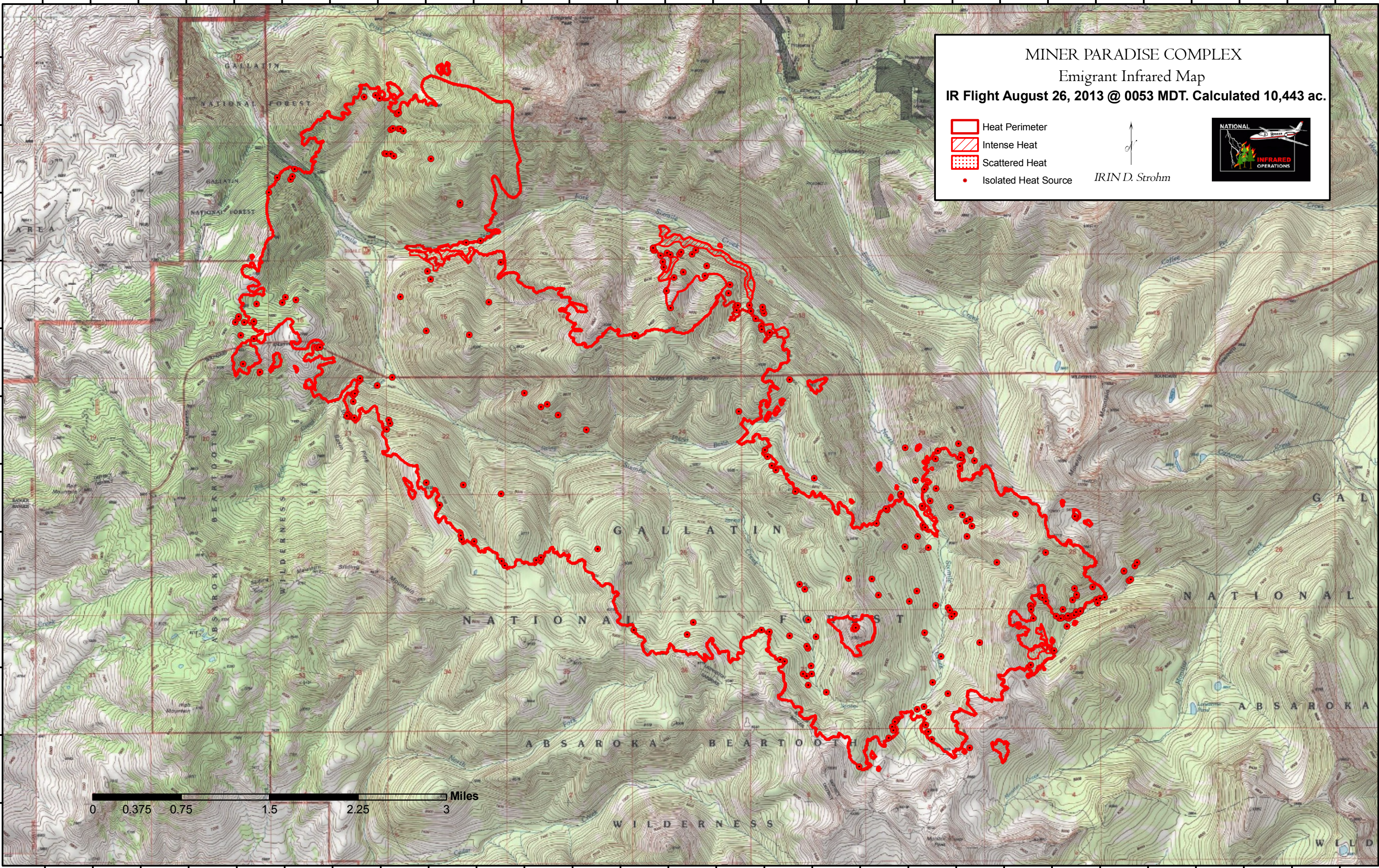


110°48'0"W 110°47'30"W 110°47'0"W 110°46'30"W 110°46'0"W 110°45'30"W 110°45'0"W 110°44'30"W 110°44'0"W 110°43'30"W 110°43'0"W 110°42'30"W 110°42'0"W 110°41'30"W 110°41'0"W 110°40'30"W 110°40'0"W 110°39'30"W 110°39'0"W 110°38'30"W 110°38'0"W 110°37'30"W 110°37'0"W 110°36'30"W 110°36'0"W 110°35'30"W 110°35'0"W 110°34'30"W

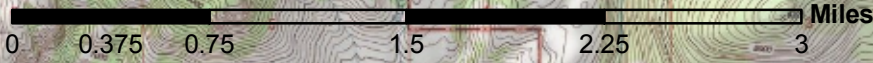

45°15'30"N
45°15'0"N
45°14'30"N
45°14'0"N
45°13'30"N
45°13'0"N
45°12'30"N
45°12'0"N
45°11'30"N
45°11'0"N
45°10'30"N
45°10'0"N



MINER PARADISE COMPLEX
Emigrant Infrared Map
IR Flight August 26, 2013 @ 0053 MDT. Calculated 10,443 ac.

- Heat Perimeter
- Intense Heat
- Scattered Heat
- Isolated Heat Source

IRIND. Strohm



110°48'0"W 110°47'30"W 110°47'0"W 110°46'30"W 110°46'0"W 110°45'30"W 110°45'0"W 110°44'30"W 110°44'0"W 110°43'30"W 110°43'0"W 110°42'30"W 110°42'0"W 110°41'30"W 110°41'0"W 110°40'30"W 110°40'0"W 110°39'30"W 110°39'0"W 110°38'30"W 110°38'0"W 110°37'30"W 110°37'0"W 110°36'30"W 110°36'0"W 110°35'30"W 110°35'0"W 110°34'30"W

45°15'30"N
45°15'0"N
45°14'30"N
45°14'0"N
45°13'30"N
45°13'0"N
45°12'30"N
45°12'0"N
45°11'30"N
45°11'0"N
45°10'30"N
45°10'0"N
45°9'30"N