




110°48'0"W 110°47'30"W 110°47'0"W 110°46'30"W 110°46'0"W 110°45'30"W 110°45'0"W 110°44'30"W 110°44'0"W 110°43'30"W 110°43'0"W 110°42'30"W 110°42'0"W 110°41'30"W 110°41'0"W 110°40'30"W 110°40'0"W 110°39'30"W 110°39'0"W 110°38'30"W 110°38'0"W 110°37'30"W 110°37'0"W 110°36'30"W 110°36'0"W 110°35'30"W 110°35'0"W 110°34'30"W

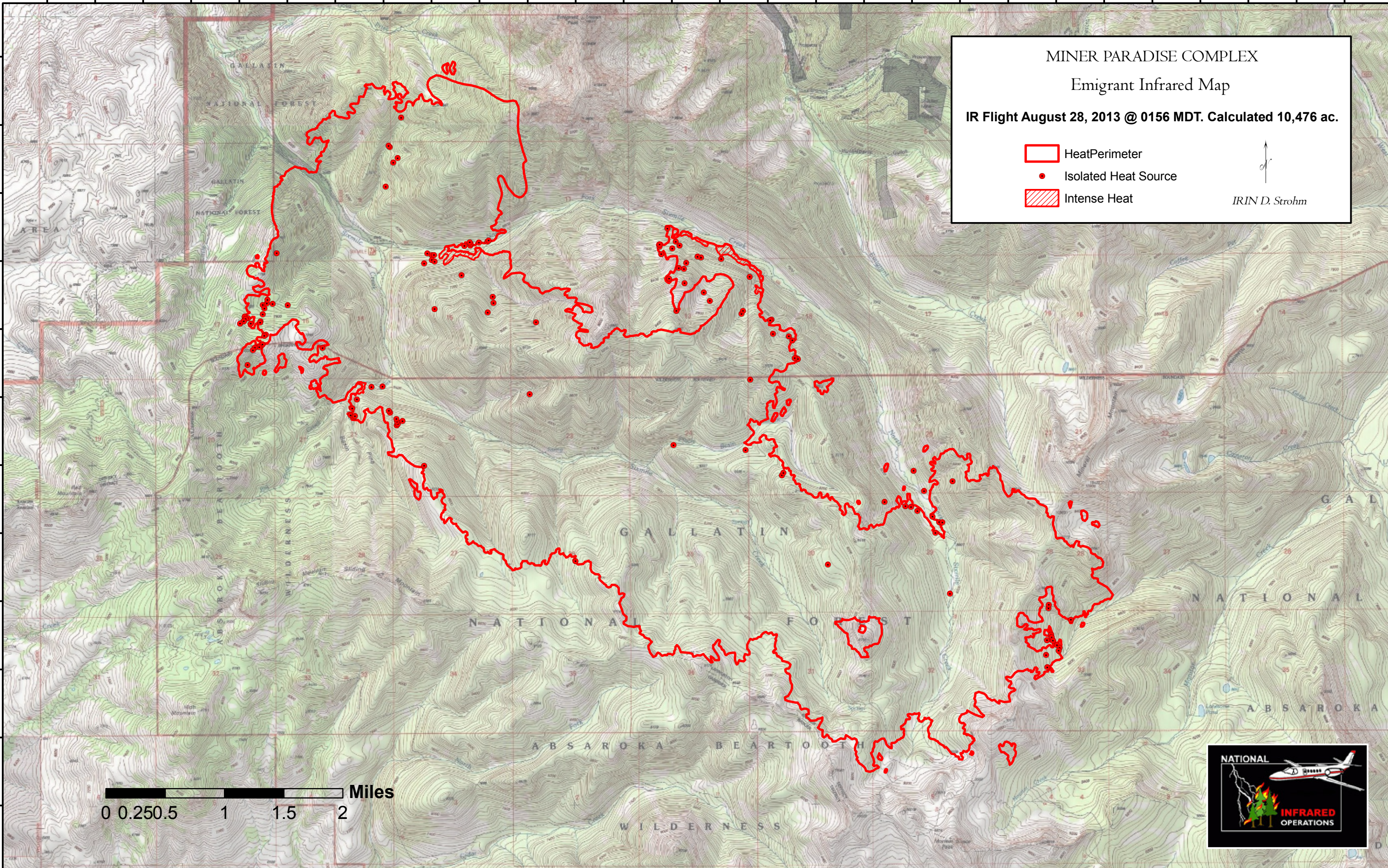
45°15'30"N
45°15'0"N
45°14'30"N
45°14'0"N
45°13'30"N
45°13'0"N
45°12'30"N
45°12'0"N
45°11'30"N
45°11'0"N
45°10'30"N
45°10'0"N

45°15'30"N
45°15'0"N
45°14'30"N
45°14'0"N
45°13'30"N
45°13'0"N
45°12'30"N
45°12'0"N
45°11'30"N
45°11'0"N
45°10'30"N
45°10'0"N

MINER PARADISE COMPLEX
Emigrant Infrared Map
IR Flight August 28, 2013 @ 0156 MDT. Calculated 10,476 ac.

-  HeatPerimeter
-  Isolated Heat Source
-  Intense Heat

IRIN D. Strohm



0 0.25 0.5 1 1.5 2 Miles



110°48'0"W 110°47'30"W 110°47'0"W 110°46'30"W 110°46'0"W 110°45'30"W 110°45'0"W 110°44'30"W 110°44'0"W 110°43'30"W 110°43'0"W 110°42'30"W 110°42'0"W 110°41'30"W 110°41'0"W 110°40'30"W 110°40'0"W 110°39'30"W 110°39'0"W 110°38'30"W 110°38'0"W 110°37'30"W 110°37'0"W 110°36'30"W 110°36'0"W 110°35'30"W 110°35'0"W 110°34'30"W