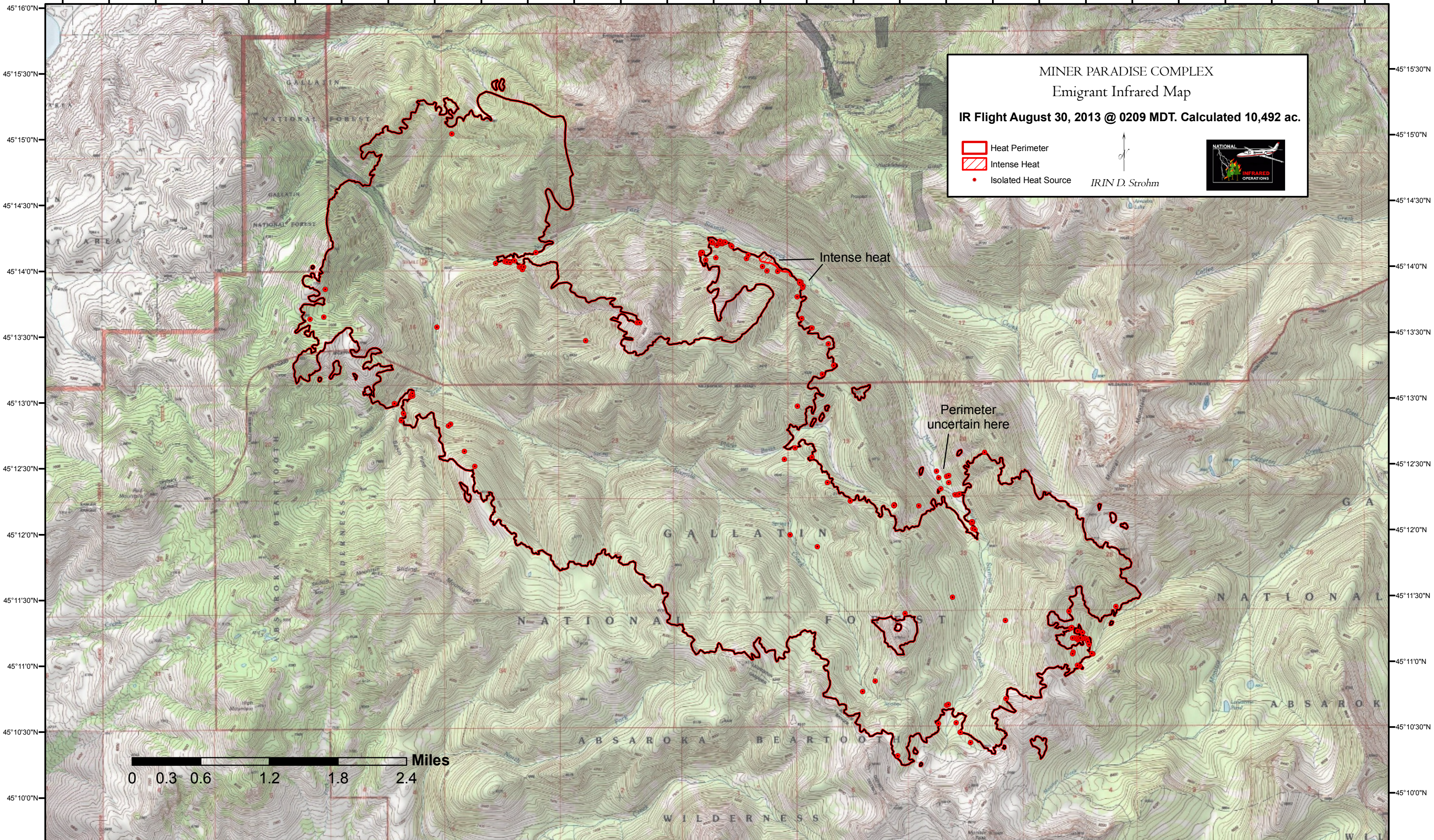






110°48'30"W 110°48'0"W 110°47'30"W 110°47'0"W 110°46'30"W 110°46'0"W 110°45'30"W 110°45'0"W 110°44'30"W 110°44'0"W 110°43'30"W 110°43'0"W 110°42'30"W 110°42'0"W 110°41'30"W 110°41'0"W 110°40'30"W 110°40'0"W 110°39'30"W 110°39'0"W 110°38'30"W 110°38'0"W 110°37'30"W 110°37'0"W 110°36'30"W 110°36'0"W 110°35'30"W 110°35'0"W 110°34'30"W



**MINER PARADISE COMPLEX**  
**Emigrant Infrared Map**  
**IR Flight August 30, 2013 @ 0209 MDT. Calculated 10,492 ac.**

-  Heat Perimeter
-  Intense Heat
-  Isolated Heat Source

*IRIN D. Strohm*



Intense heat

Perimeter uncertain here

0 0.3 0.6 1.2 1.8 2.4 Miles

110°48'30"W 110°48'0"W 110°47'30"W 110°47'0"W 110°46'30"W 110°46'0"W 110°45'30"W 110°45'0"W 110°44'30"W 110°44'0"W 110°43'30"W 110°43'0"W 110°42'30"W 110°42'0"W 110°41'30"W 110°41'0"W 110°40'30"W 110°40'0"W 110°39'30"W 110°39'0"W 110°38'30"W 110°38'0"W 110°37'30"W 110°37'0"W 110°36'30"W 110°36'0"W 110°35'30"W 110°35'0"W 110°34'30"W