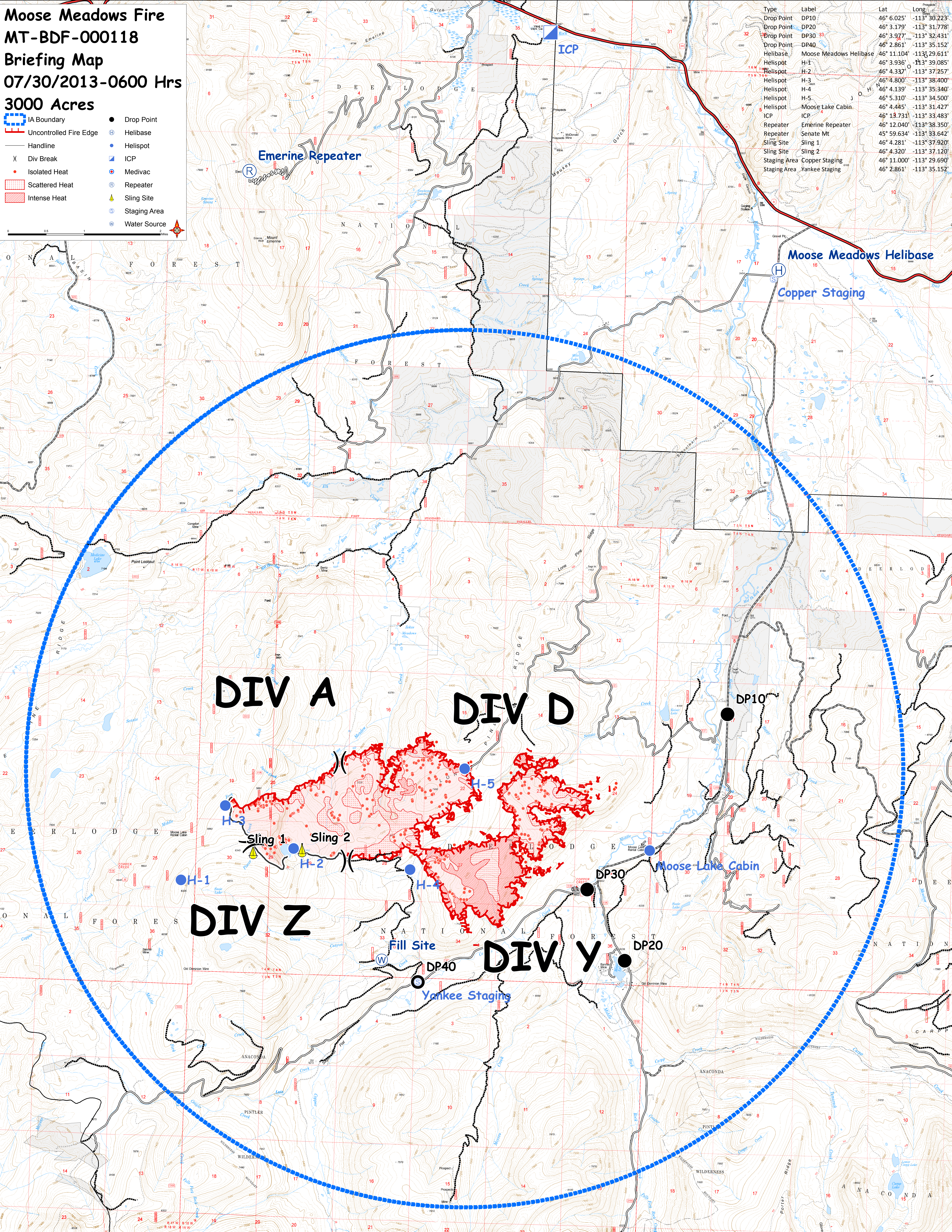


**Moose Meadows Fire**  
**MT-BDF-000118**  
**Briefing Map**  
**07/30/2013-0600 Hrs**  
**3000 Acres**

- IA Boundary
- Uncontrolled Fire Edge
- Handline
- Div Break
- Isolated Heat
- Scattered Heat
- Intense Heat
- Drop Point
- Helibase
- Helispot
- ICP
- Medivac
- Repeater
- Sling Site
- Staging Area
- Water Source

Type	Label	Lat	Long
Drop Point	DP10	46° 6.025'	-113° 30.223'
Drop Point	DP20	46° 3.179'	-113° 31.778'
Drop Point	DP30	46° 3.977'	-113° 32.431'
Drop Point	DP40	46° 2.861'	-113° 35.152'
Helibase	Moose Meadows Helibase	46° 11.104'	-113° 29.611'
Helispot	H-1	46° 3.936'	-113° 39.085'
Helispot	H-2	46° 4.337'	-113° 37.257'
Helispot	H-3	46° 4.800'	-113° 38.400'
Helispot	H-4	46° 4.139'	-113° 35.340'
Helispot	H-5	46° 5.310'	-113° 34.500'
Helispot	Moose Lake Cabin	46° 4.445'	-113° 31.427'
ICP	ICP	46° 13.731'	-113° 33.483'
Repeater	Emerine Repeater	46° 12.040'	-113° 38.350'
Repeater	Senate Mt	45° 59.634'	-113° 33.642'
Sling Site	Sling 1	46° 4.281'	-113° 37.920'
Sling Site	Sling 2	46° 4.320'	-113° 37.120'
Staging Area	Copper Staging	46° 11.000'	-113° 29.690'
Staging Area	Yankee Staging	46° 2.861'	-113° 35.152'



**DIV A**

**DIV D**

**DIV Z**

**DIV Y**

Sling 1 Sling 2

Fill Site

Yankee Staging

Moose Lake Cabin

Emerine Repeater

ICP

Moose Meadows Helibase

Copper Staging

DP10

DP30

DP20

DP40