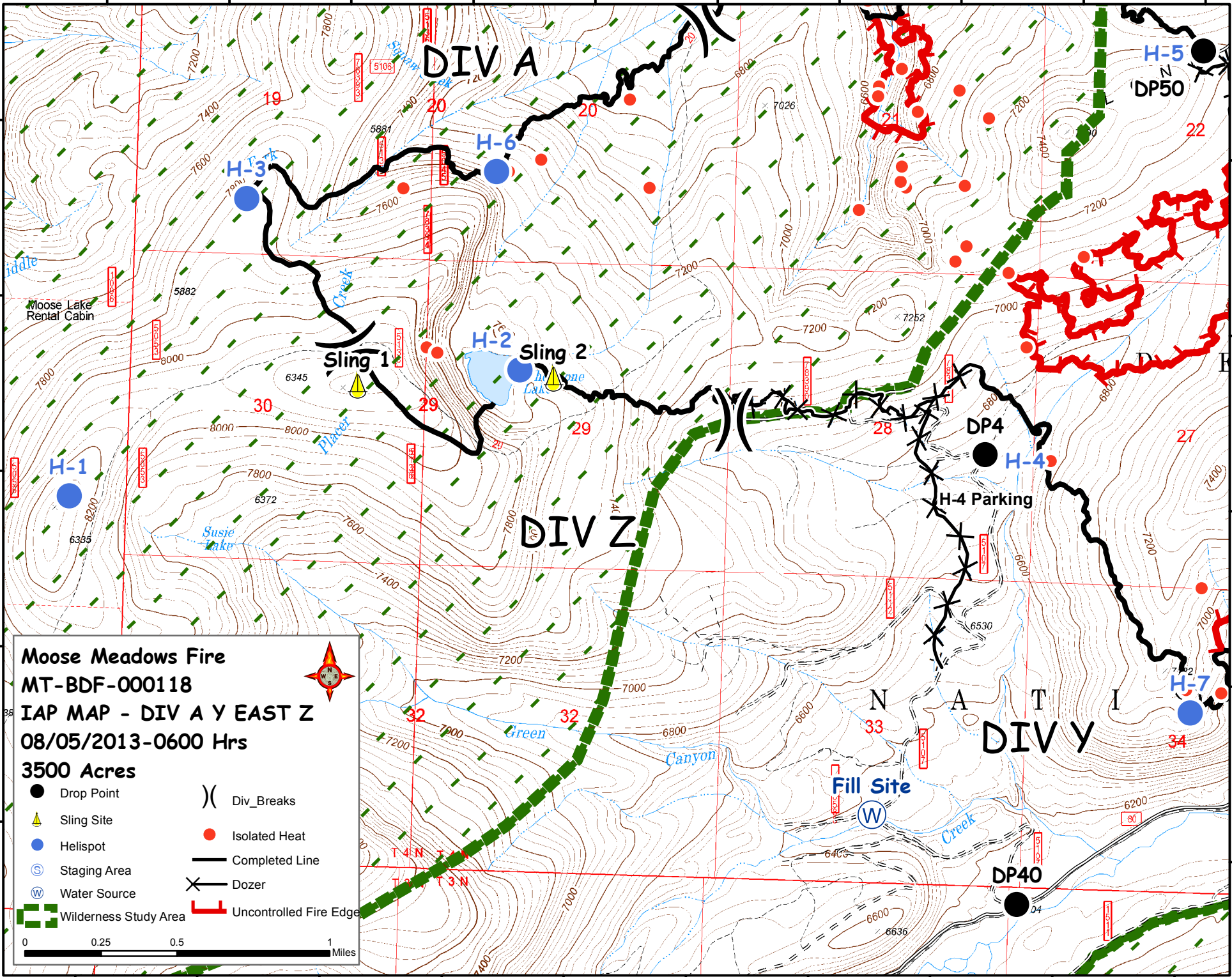


113°39'W 113°38'W 113°38'W 113°38'W 113°37'W 113°37'W 113°36'W 113°35'W 113°35'W 113°34'W

46°5'N
46°4'N
46°4'N
46°3'N
46°3'N

46°5'N
46°4'N
46°4'N
46°3'N
46°3'N



Moose Meadows Fire
MT-BDF-000118
IAP MAP - DIV A Y EAST Z
08/05/2013-0600 Hrs
3500 Acres

● Drop Point) Div_Breaks
▲ Slingsite	● Isolated Heat
● Helispot	— Completed Line
⊙ Staging Area	⊗ Dozer
⊙ Water Source	┌ Uncontrolled Fire Edge
▣ Wilderness Study Area	

0 0.25 0.5 1 Miles

113°39'W 113°38'W 113°38'W 113°38'W 113°37'W 113°37'W 113°36'W 113°35'W 113°35'W 113°34'W