

113°34'W

113°34'W

113°33'W

113°33'W

113°32'W

113°32'W

113°31'W

113°31'W

113°30'W

113°30'W

46°7'N

46°6'N

46°6'N

46°6'N

46°5'N

46°7'N

46°6'N

46°6'N

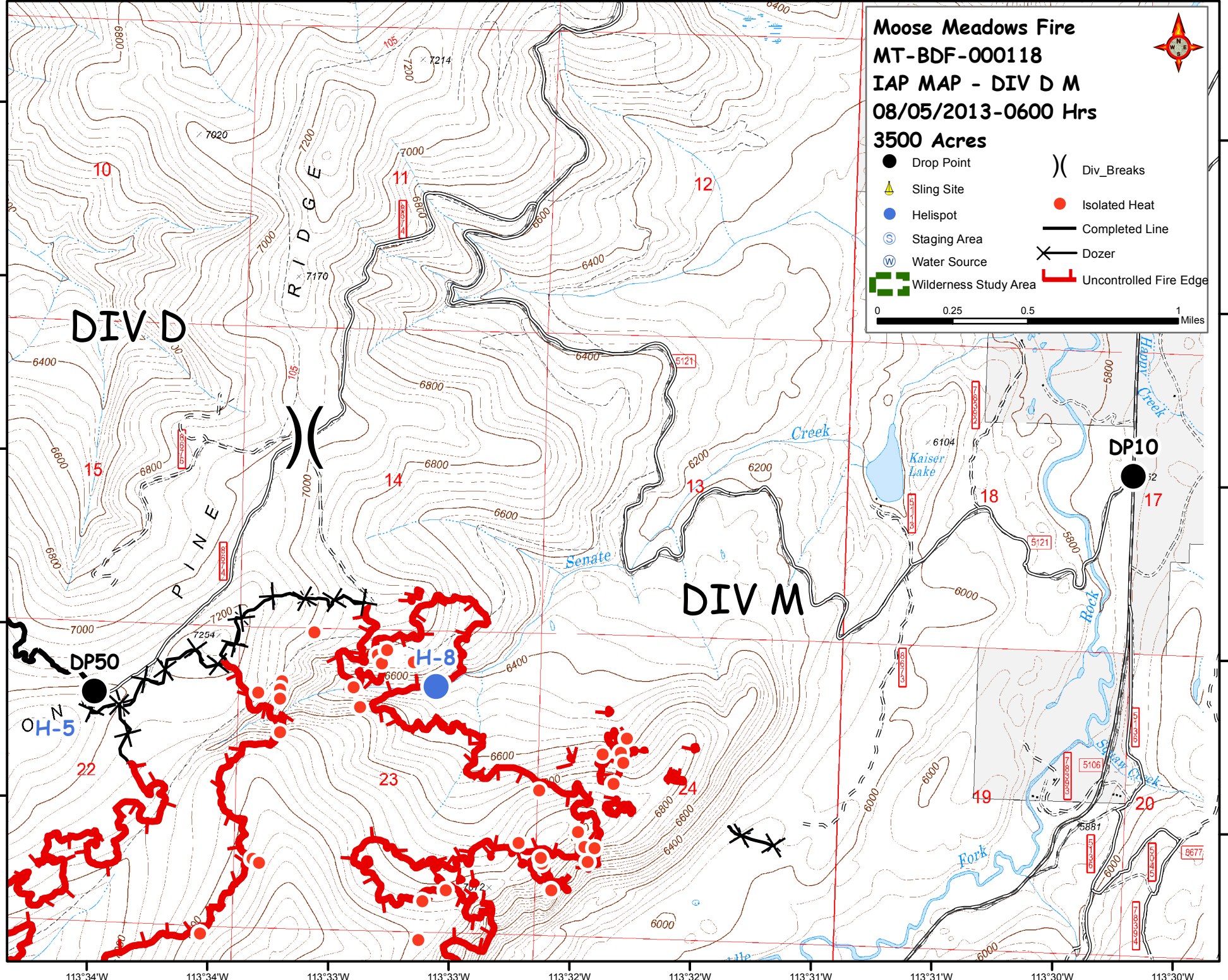
46°6'N

46°5'N

Moose Meadows Fire
MT-BDF-000118
IAP MAP - DIV D M
08/05/2013-0600 Hrs
3500 Acres

● Drop Point	() Div_Breaks
▲ Sling Site	● Isolated Heat
● Helispot	— Completed Line
⊙ Staging Area	✂ Dozer
⊙ Water Source	┌ Uncontrolled Fire Edge
▣ Wilderness Study Area	

0 0.25 0.5 1 Miles



113°34'W

113°34'W

113°33'W

113°33'W

113°32'W

113°32'W

113°31'W

113°31'W

113°30'W

113°30'W