

113°34'W 113°34'W 113°33'W 113°33'W 113°32'W 113°32'W 113°31'W 113°31'W 113°30'W 113°30'W

46°7'N

46°6'N

46°6'N

46°6'N

46°5'N

46°7'N

46°6'N

46°6'N

46°6'N

46°5'N

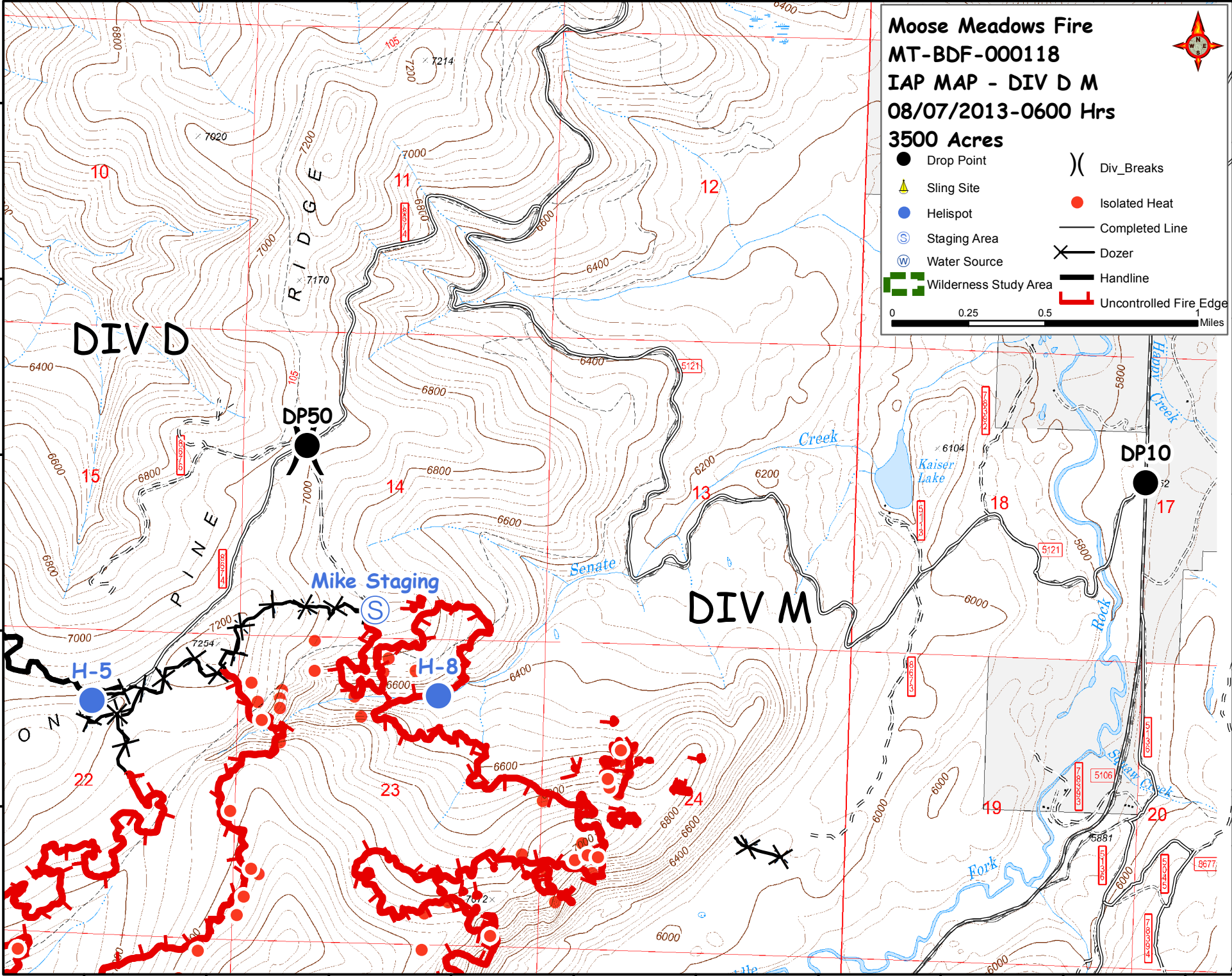
# Moose Meadows Fire MT-BDF-000118 IAP MAP - DIV D M 08/07/2013-0600 Hrs



**3500 Acres**

- Drop Point
- ▲ Sling Site
- Helispot
- ⊙ Staging Area
- ⊙ Water Source
- ▣ Wilderness Study Area
- ) ( Div\_Breaks
- Isolated Heat
- Completed Line
- ✂ Dozer
- Handline
- ▬ Uncontrolled Fire Edge

0 0.25 0.5 1 Miles



113°34'W 113°34'W 113°33'W 113°33'W 113°32'W 113°32'W 113°31'W 113°31'W 113°30'W 113°30'W