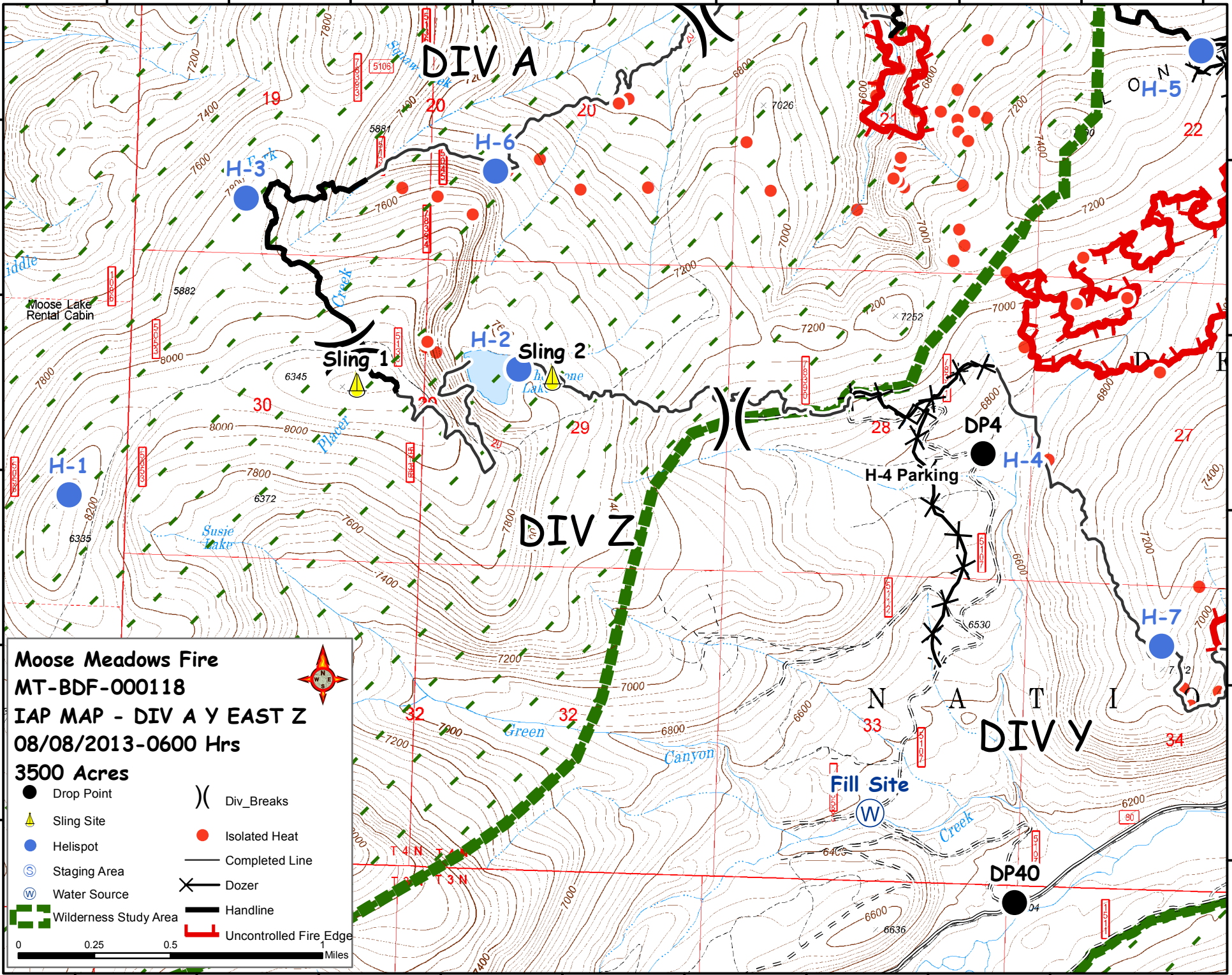


113°39'W 113°38'W 113°38'W 113°38'W 113°37'W 113°37'W 113°36'W 113°35'W 113°35'W 113°34'W

46°5'N  
46°4'N  
46°4'N  
46°3'N  
46°3'N

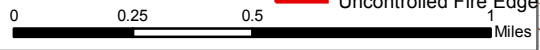
46°5'N  
46°4'N  
46°4'N  
46°3'N  
46°3'N



**Moose Meadows Fire**  
**MT-BDF-000118**  
**IAP MAP - DIV A Y EAST Z**  
**08/08/2013-0600 Hrs**

**3500 Acres**

- Drop Point
- ▲ Sling Site
- Helispot
- ⊙ Staging Area
- ⊙ Water Source
- ▤ Wilderness Study Area
- ⌋ Div\_Breaks
- Isolated Heat
- Completed Line
- ⌘ Dozer
- Handline
- ┌ Uncontrolled Fire Edge



113°39'W 113°38'W 113°38'W 113°38'W 113°37'W 113°37'W 113°36'W 113°35'W 113°35'W 113°34'W