

113°34'W 113°34'W 113°33'W 113°33'W 113°32'W 113°32'W 113°31'W 113°31'W 113°30'W 113°30'W

46°7'N

46°6'N

46°6'N

46°6'N

46°5'N

46°7'N

46°6'N

46°6'N

46°6'N

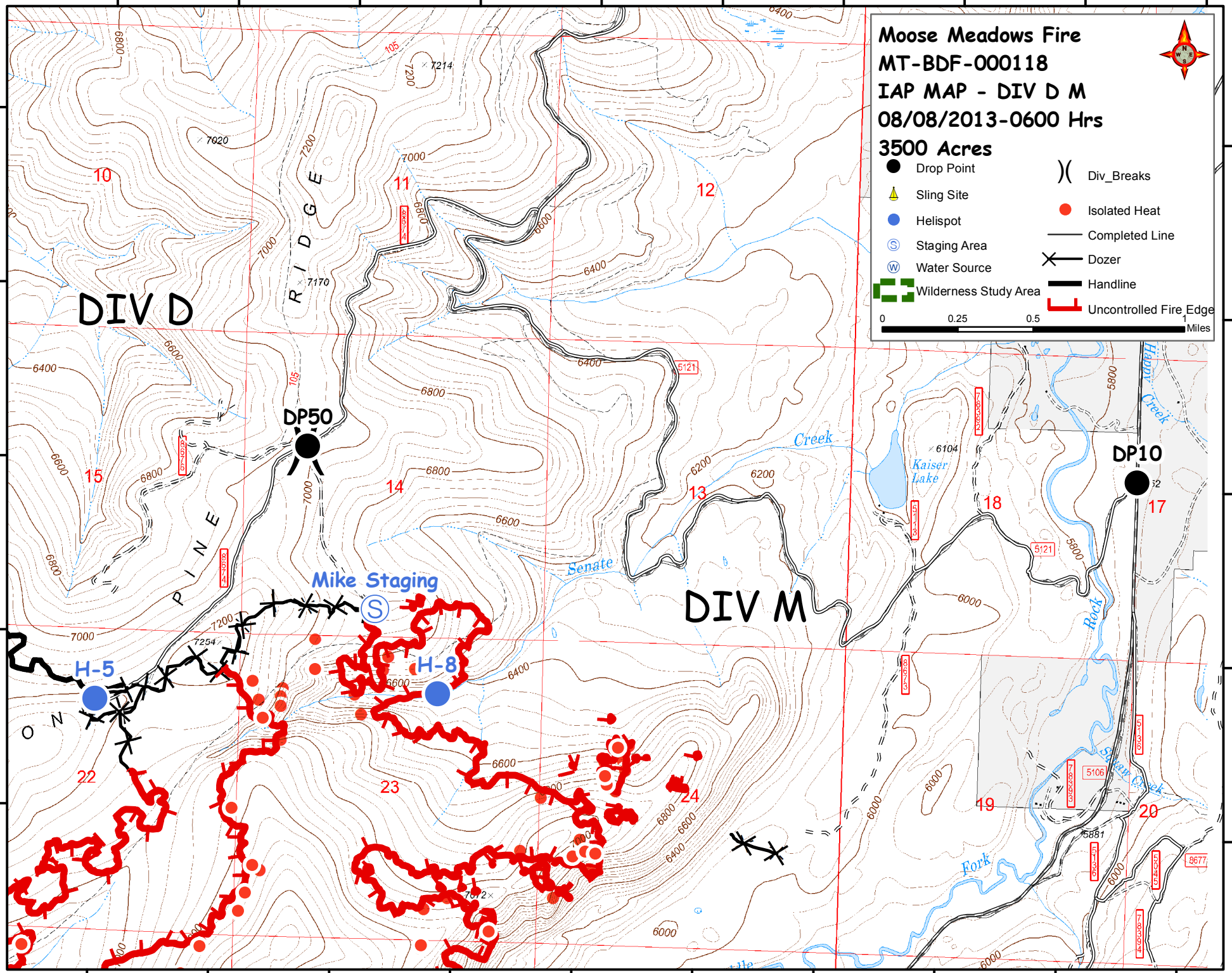
46°5'N

113°34'W 113°34'W 113°33'W 113°33'W 113°32'W 113°32'W 113°31'W 113°31'W 113°30'W 113°30'W

**Moose Meadows Fire**  
**MT-BDF-000118**  
**IAP MAP - DIV D M**  
**08/08/2013-0600 Hrs**  
**3500 Acres**

● Drop Point	( ) Div_Breaks
▲ Sling Site	● Isolated Heat
● Helispot	— Completed Line
⊙ Staging Area	✂ Dozer
⊙ Water Source	▬ Handline
▭ Wilderness Study Area	┌ Uncontrolled Fire Edge

0 0.25 0.5 1 Miles



113°34'W 113°34'W 113°33'W 113°33'W 113°32'W 113°32'W 113°31'W 113°31'W 113°30'W 113°30'W