

113°34'W 113°34'W 113°33'W 113°33'W 113°32'W 113°32'W 113°31'W 113°31'W 113°30'W 113°30'W

46°7'N

46°6'N

46°6'N

46°6'N

46°5'N

46°7'N

46°6'N

46°6'N

46°6'N

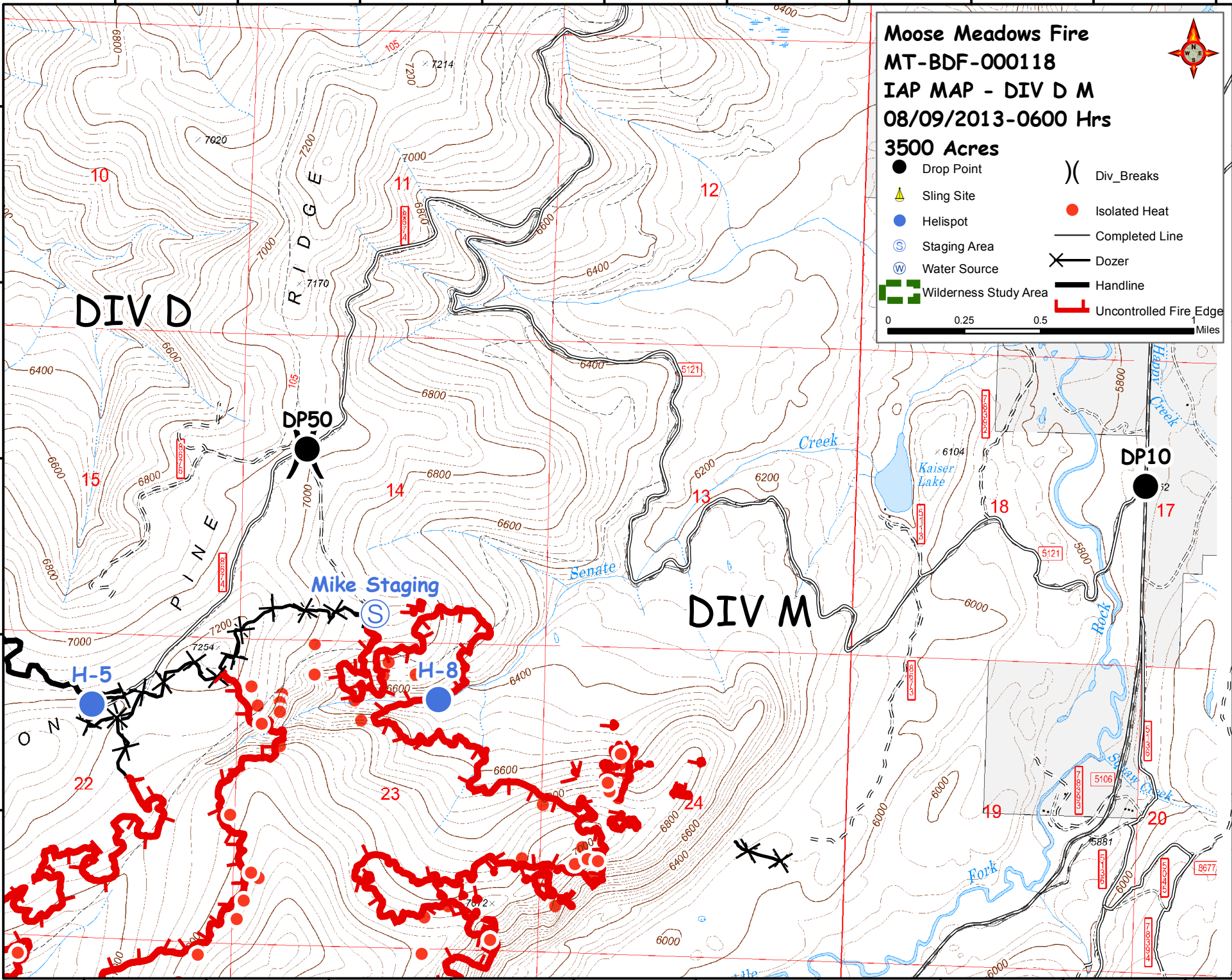
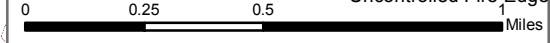
46°5'N

# Moose Meadows Fire MT-BDF-000118 IAP MAP - DIV D M 08/09/2013-0600 Hrs



**3500 Acres**

- Drop Point
- ▲ Sling Site
- Helispot
- ⊙ Staging Area
- ⊙ Water Source
- ▣ Wilderness Study Area
- ) Div\_Breaks
- Isolated Heat
- Completed Line
- ✂ Dozer
- ▬ Handline
- ┌ Uncontrolled Fire Edge



DIV D

DIV M

DP50

DP10

Mike Staging

H-5

H-8

10

11

12

15

14

13

22

23

24

19

20

113°34'W 113°34'W 113°33'W 113°33'W 113°32'W 113°32'W 113°31'W 113°31'W 113°30'W 113°30'W