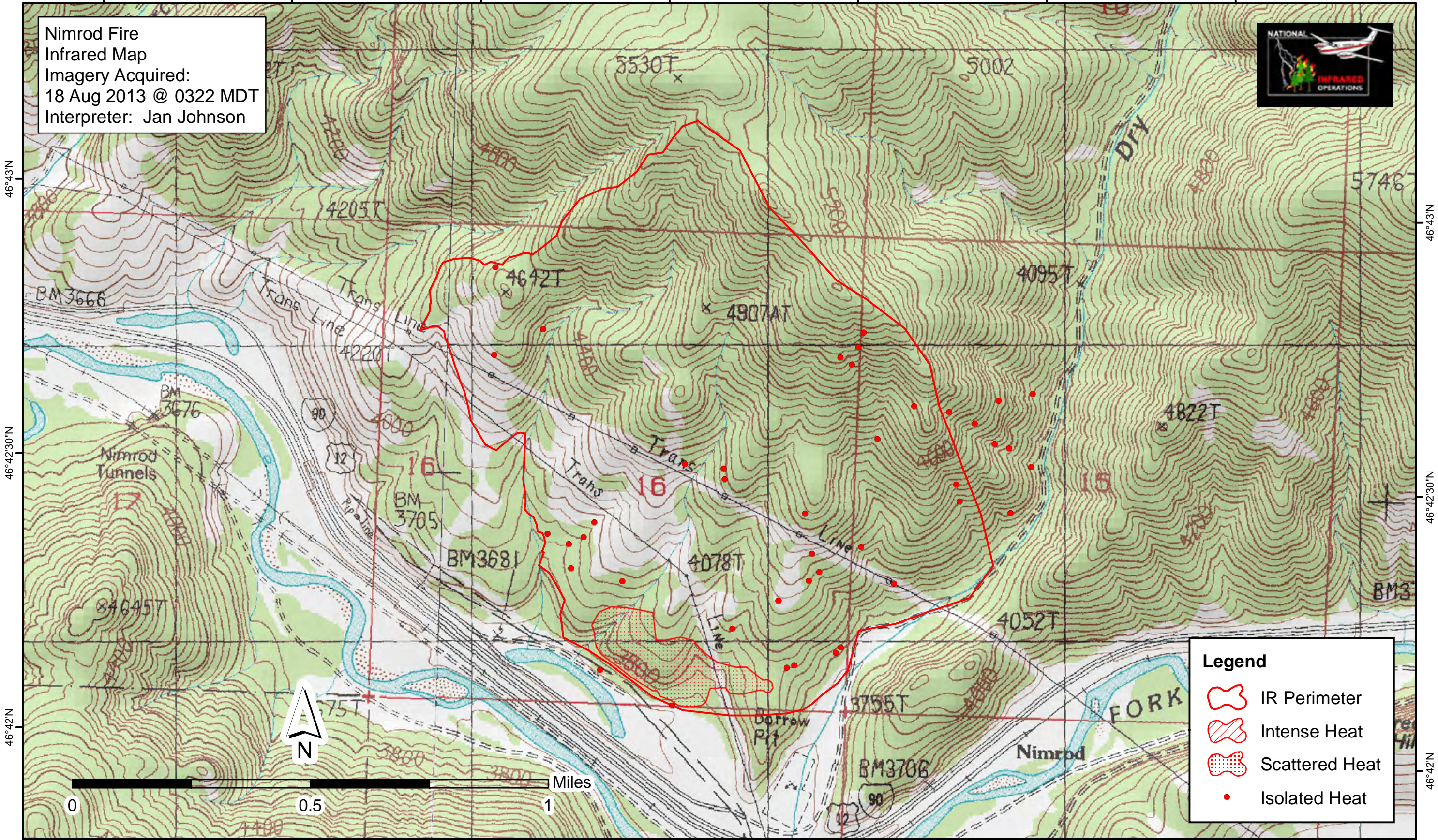
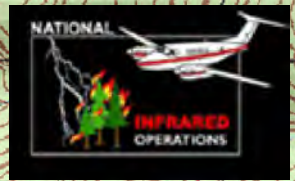


Nimrod Fire
Infrared Map
Imagery Acquired:
18 Aug 2013 @ 0322 MDT
Interpreter: Jan Johnson



Legend

- IR Perimeter
- Intense Heat
- Scattered Heat
- Isolated Heat



113°31'W 113°30'30"W 113°30'W 113°29'30"W 113°29'W 113°28'30"W 113°28'W

46°43'N 46°42'30"N 46°42'N

5530T 5002 5746 4205T 4642T 4907AT 4095T 4078T 4822T 4052T 3755T 3706 4045T 4220T 4000 4078T 4052T 3755T 3706 575T 3800 3800 1400

Trans Line Trans Line Trans Line Trans Line

Nimrod Tunnels

Nimrod Fork

Dry Fork

Borrow Pit

90 12 90 12 90 12

BM3666 BM3676 BM3705 BM3681 BM3706

0 0.5 1 Miles

113°31'W 113°30'30"W 113°30'W 113°29'30"W 113°29'W 113°28'30"W 113°28'W 113°27'30"W