

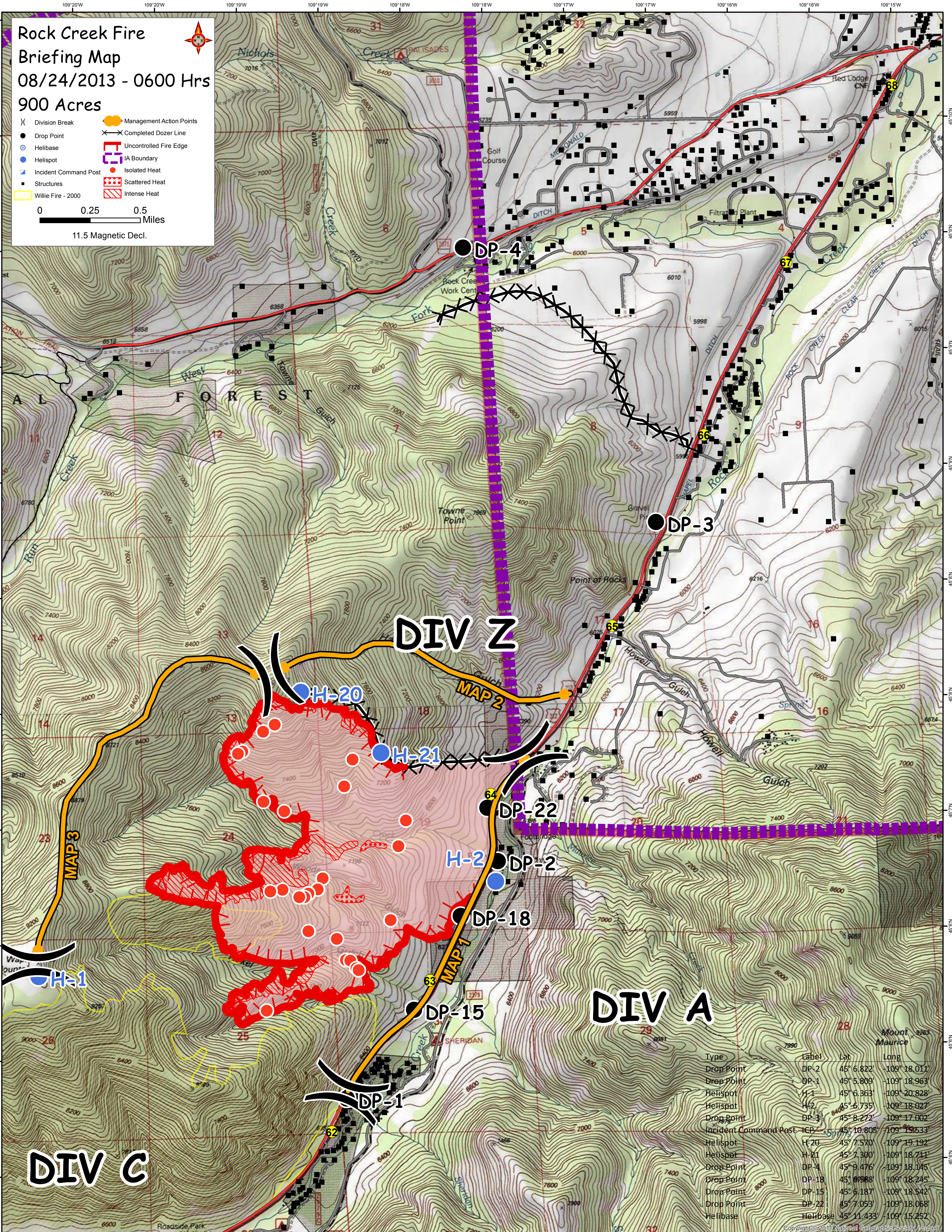
# Rock Creek Fire Briefing Map

08/24/2013 - 0600 Hrs  
900 Acres

- ( ) Division Break
- Drop Point
- ⊙ Helibase
- ⊙ Helispot
- ⊙ Incident Command Post
- Structures
- ▭ Willie Fire - 2000
- Management Action Points
- ⊗ Completed Dozer Line
- ⊕ Uncontrolled Fire Edge
- ⊖ IA Boundary
- Isolated Heat
- ⊙ Scattered Heat
- ⊙ Intense Heat

0 0.25 0.5 Miles

11.5 Magnetic Decl.



Type	Label	Lat	Long
Drop Point	DP-2	45° 6.822'	-109° 18.011'
Drop Point	DP-1	45° 5.809'	-109° 18.963'
Helispot	H-1	45° 6.363'	-109° 20.828'
Helispot	H-2	45° 6.735'	-109° 18.027'
Drop Point	DP-3	45° 8.272'	-109° 17.002'
Incident Command Post	ICP	45° 10.805'	-109° 15.533'
Helispot	H-20	45° 7.570'	-109° 19.192'
Helispot	H-21	45° 7.300'	-109° 18.711'
Drop Point	DP-4	45° 9.476'	-109° 18.145'
Drop Point	DP-18	45° 6.568'	-109° 18.245'
Drop Point	DP-15	45° 6.187'	-109° 18.542'
Drop Point	DP-22	45° 7.053'	-109° 18.068'
Helibase		45° 11.433'	-109° 15.252'